

AlphaLISA® SureFire® Ultra™

Mouse p-TFEB (Ser122) Detection Kit

Product number: ALSU-PTFEB-C500, ALSU-PTFEB-C10K,
ALSU-PTFEB-C50K, ALSU-PTFEB-C-HV



Kit specificity:

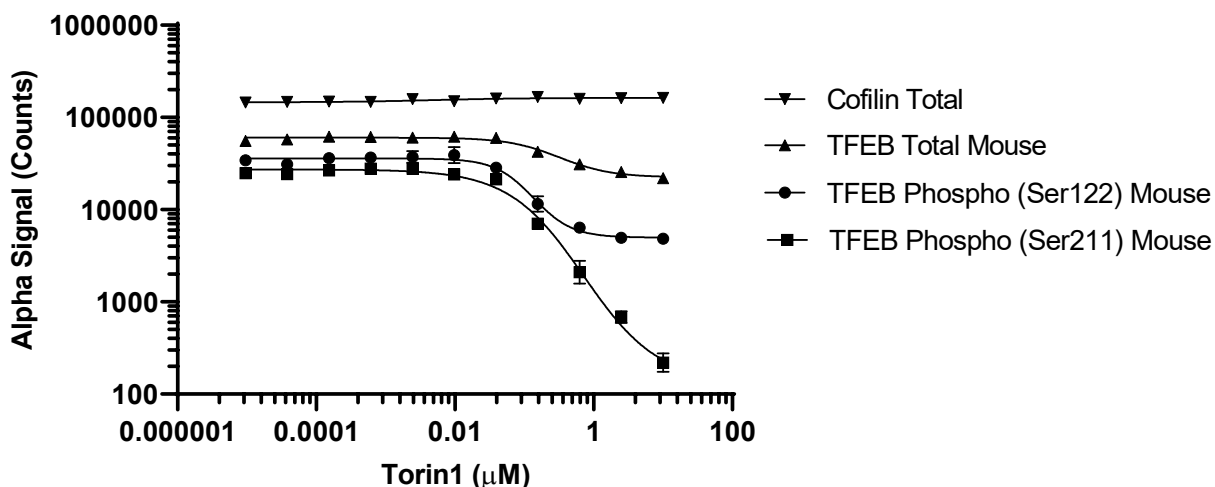
This assay kit contains antibodies which recognize the phospho-Ser122 epitope and a distal epitope on TFEB. The protein detected by this kit corresponds to UniProt ID Q9R210. TFEB is also known as transcription factor EB. These antibodies recognize TFEB of mouse origin. Other species should be tested on a case-by-case basis.

Control lysate information:

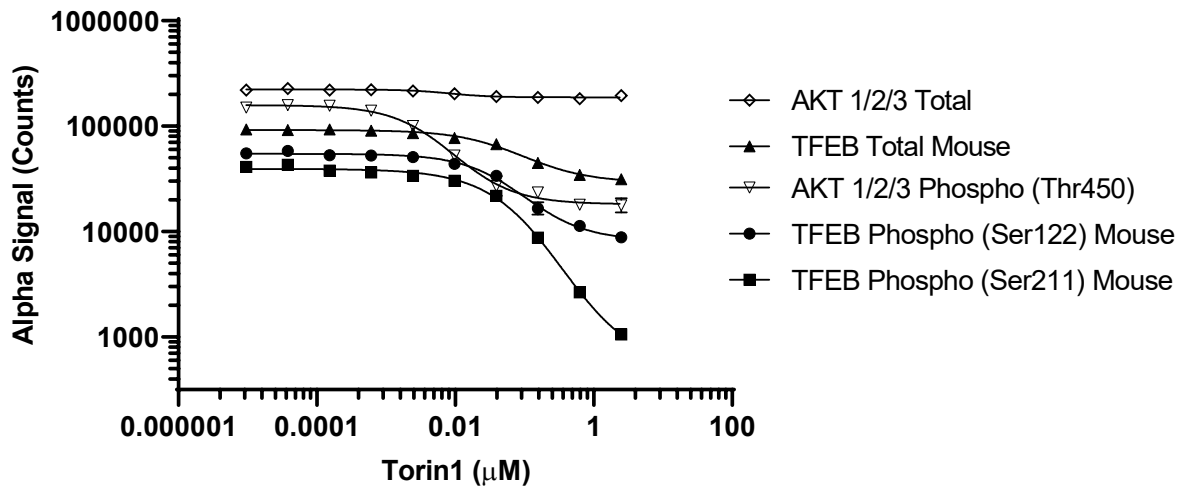
Positive Control Lysate: Prepared from Raw264.7 cells, cultured to confluence in T175 flasks in 10% FBS containing medium, lysed with 4 mL of Lysis Buffer.

Representative data

Data obtained with a 2-plate, 2-incubation protocol. Raw264.7 cells were seeded at 40K cells/well in a 96 well plate and incubated overnight. Cells were treated with Torin1 at the indicated concentrations for 2 hours. Cells were lysed with Lysis Buffer and assayed separately for various assays using respective *SureFire Ultra* kits. Equivalent to approximately 4,000 cells/datapoint. Approximately 400 cell/datapoint for Total Cofilin.



Data obtained with a 2-plate, 2-incubation protocol. Raw264.7 cells were seeded at 60K cells/well in a 96 well plate and incubated overnight. Cells were treated with Torin1 at the indicated concentrations for 18 hours. Cells were lysed with Lysis Buffer and assayed separately for various assays using respective *SureFire Ultra* kits. Equivalent to approximately 6,000 cells/datapoint.



The information provided in this document is for reference purposes only and may not be all-inclusive. Revvity, Inc., its subsidiaries, and/or affiliates (collectively, "Revvity") do not assume liability for the accuracy or completeness of the information contained herein. Users should exercise caution when handling materials as they may present unknown hazards. Revvity shall not be liable for any damages or losses resulting from handling or contact with the product, as Revvity cannot control actual methods, volumes, or conditions of use. Users are responsible for ensuring the product's suitability for their specific application. REVVITY EXPRESSLY DISCLAIMS ALL WARRANTIES, INCLUDING WARRANTIES OF MERCHANTABILITY OR FITNESS FOR A PARTICULAR PURPOSE, REGARDLESS OF WHETHER ORAL OR WRITTEN, EXPRESS OR IMPLIED, ALLEGEDLY ARISING FROM ANY USAGE OF ANY TRADE OR ANY COURSE OF DEALING, IN CONNECTION WITH THE USE OF INFORMATION CONTAINED HEREIN OR THE PRODUCT ITSELF"



Revvity, Inc.
940 Winter Street
Waltham, MA 02451 USA

(800) 762-4000
www.revvity.com

For a complete listing of our global offices, visit www.revvity.com
Copyright ©2023, Revvity, Inc. All rights reserved.