

AlphaLISA® SureFire® Ultra™

# Human CDC25C Total Detection Kit

**Product number:** ALSU-TCDC25-A500, ALSU-TCDC25-A10K,  
ALSU-TCDC25-A50K, ALSU-TCDC25-A-HV



**Kit specificity:**

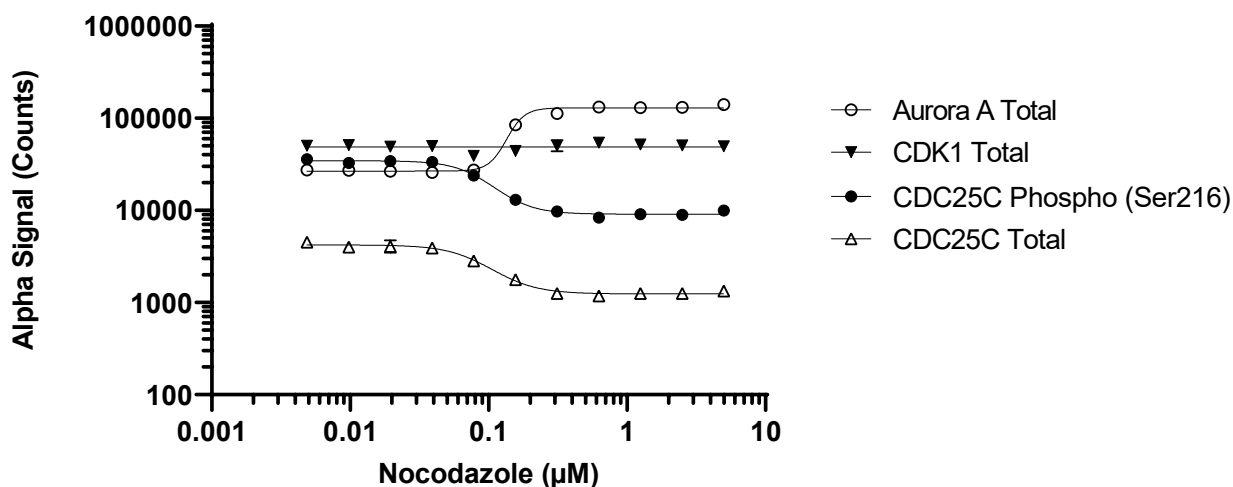
This assay kit contains antibodies which recognize distinct epitopes on CDC25C. The protein detected by this kit corresponds to UniProt ID P30307. CDC25C is also known as cell division cycle 25C. These antibodies recognize CDC25C of human origin. Other species should be tested on a case-by-case basis.

**Control lysate information:**

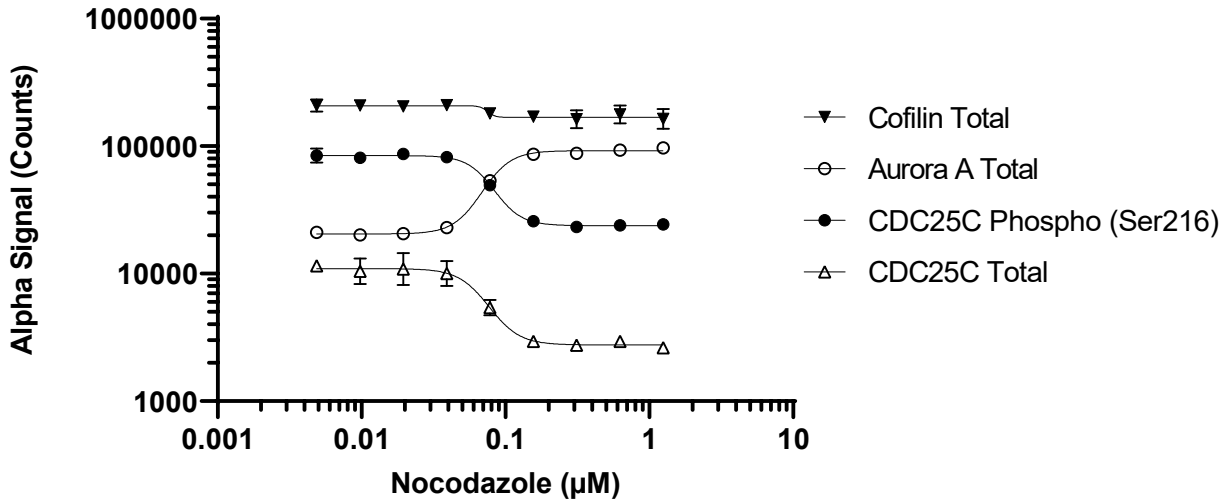
Positive Control Lysate: Prepared from HEK293 cells, cultured to confluence in T175 flasks in 10% FBS containing medium, lysed with 5 mL of Lysis Buffer.

**Representative data**

Data obtained with a 2-plate, 2-incubation protocol. A549 cells were seeded at 20K cells/well in a 96 well plate and incubated for 48 hours. Cells were treated with Nocodazole at the indicated concentrations for 18 hours. Cells were lysed with Lysis Buffer and assayed separately for various targets using respective *SureFire Ultra* kits. Equivalent to approximately 2,000 cells/datapoint for Phospho (Ser216) CDC25C & Total Aurora A, 200 cells/datapoint for Total CDK1 and 400 cells/datapoint for Total CDC25C.



Data obtained with a 2-plate, 2-incubation protocol. A431 cells were seeded at 20K cells/well in a 96 well plate and incubated for 48 hours. Cells were treated with Nocodazole at the indicated concentrations for 18 hours. Cells were lysed with Lysis Buffer and assayed separately for various targets using respective *SureFire Ultra* kits. Equivalent to approximately 2,000 cells/datapoint for Phospho (Ser216) CDC25C & Total Aurora A, 100 cells/datapoint for Total Cofilin and 400 cells/datapoint for Total CDC25C



The information provided in this document is for reference purposes only and may not be all-inclusive. Revvity, Inc., its subsidiaries, and/or affiliates (collectively, "Revvity") do not assume liability for the accuracy or completeness of the information contained herein. Users should exercise caution when handling materials as they may present unknown hazards. Revvity shall not be liable for any damages or losses resulting from handling or contact with the product, as Revvity cannot control actual methods, volumes, or conditions of use. Users are responsible for ensuring the product's suitability for their specific application. REVVITY EXPRESSLY DISCLAIMS ALL WARRANTIES, INCLUDING WARRANTIES OF MERCHANTABILITY OR FITNESS FOR A PARTICULAR PURPOSE, REGARDLESS OF WHETHER ORAL OR WRITTEN, EXPRESS OR IMPLIED, ALLEGEDLY ARISING FROM ANY USAGE OF ANY TRADE OR ANY COURSE OF DEALING, IN CONNECTION WITH THE USE OF INFORMATION CONTAINED HEREIN OR THE PRODUCT ITSELF"



Revvity, Inc.  
940 Winter Street  
Waltham, MA 02451 USA

(800) 762-4000  
www.revvity.com

For a complete listing of our global offices, visit [www.revvity.com](http://www.revvity.com)  
Copyright ©2023, Revvity, Inc. All rights reserved.