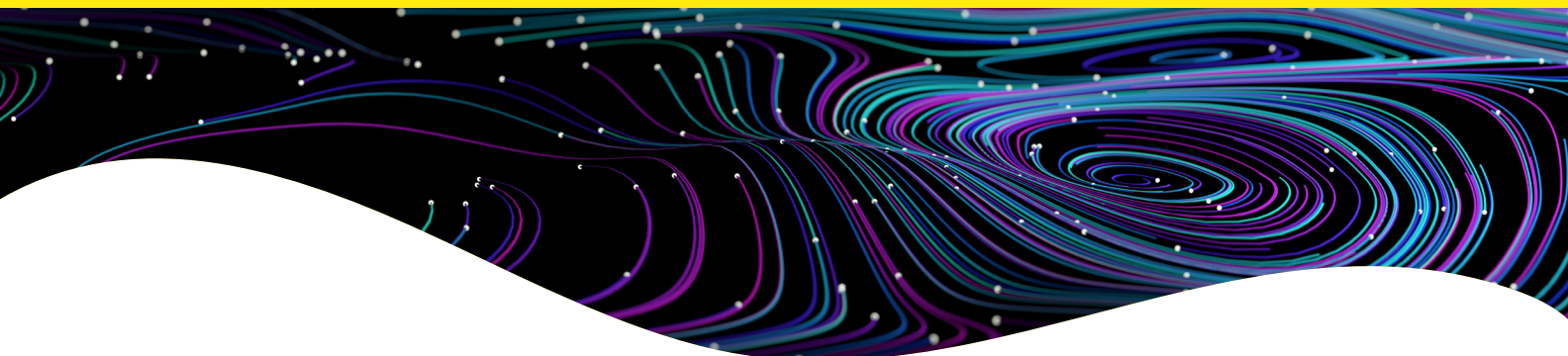


# HTRF setup recommendations for GENios Pro.



## HTRF Europium cryptate donor / red acceptor readout setup recommendations for GENios Pro

Two sequential measurements should be carried out: at 620 nm for the cryptate emission, and at 665 nm for the specific signal emitted by the acceptor (XL665 or d2). The ratio of the two fluorescence intensities 665/620 (acceptor/donor) enables the calculation of Delta F (%) which represents the relative energy transfer rate for each sample.

GENios Pro™ readers must be appropriately configured for HTRF™ readout by setting up the measurement conditions in the “multilabeling” function of Xfluor4 software. In particular, these parameters should be entered as defined in table below following the installation of the Tecan HTRF upgrade kit (Tecan #B122175) on GENios Pro.

	Measurement 1	Measurement 2
Excitation filter	320(25) nm Ref.: 30000397	320(25) nm Ref.: 30000397
Emission filter	620(10) nm Ref.: 30002292	665(8.5) nm Ref.: 30007518
Mirror	Dichroic 3 (e.g. FL 96)	Dichroic 3 (e.g. FL 96)
Number of flashes	10	10
Lag time	150 µs	150 µs
Integration time	500 µs	500 µs
Gain	Optimal	Optimal
Z position	Optimal	Optimal

## HTRF Terbium cryptate donor / green acceptor readout setup recommendations for GENios Pro

Two sequential measurements should be carried out: at 620 nm for the cryptate emission, and at 520 nm for the specific signal emitted by the acceptor. The ratio of the two fluorescence intensities 520/620 (acceptor/donor) enables the calculation of Delta F (%) which represents the relative energy transfer rate for each sample.

GENios Pro readers must be appropriately configured for HTRF readout by setting up the measurement conditions in the "multilabeling" function of Xfluor4 software. In particular, these parameters should be entered as defined in table below following the installation of the Tecan HTRF upgrade kit (Tecan #B122175) on GENios Pro.

	Measurement 1	Measurement 2
Excitation filter	340(20) nm Ref.: 30000405	340(20) nm Ref.: 30000405
Emission filter	620(10) nm Ref.: 30002292	520(10) nm Ref.: 30000463
Mirror	Dichroic 3 (e.g. FL 96)	Dichroic 3 (e.g. FL 96)
Number of flashes	10	10
Lag time	150 µs	150 µs
Integration time	500 µs	500 µs
Gain	Optimal	Optimal
Z position	Optimal	Optimal

## HTRF Terbium cryptate donor / red acceptor readout setup recommendations for GENios Pro

Two sequential measurements should be carried out: at 620 nm for the cryptate emission, and at 665 nm for the specific signal emitted by the acceptor (XL665 or d2). The ratio of the two fluorescence intensities 665/620 (acceptor/donor) enables the calculation of Delta F (%) which represents the relative energy transfer rate for each sample.

GENios Pro readers must be appropriately configured for HTRF readout by setting up the measurement conditions in the "multilabeling" function of Xfluo4 software. In particular, these parameters should be entered as defined in table below following the installation of the Tecan HTRF upgrade kit (Tecan #B122175) on GENios Pro.

	Measurement 1	Measurement 2
Excitation filter	340(20) nm Ref.: 30000405	340(20) nm Ref.: 30000405
Emission filter	620(10) nm Ref.: 30002292	665(8.5) nm Ref.: 30007518
Mirror	Dichroic 3 (e.g. FL 96)	Dichroic 3 (e.g. FL 96)
Number of flashes	10	10
Lag time	150 µs	150 µs
Integration time	500 µs	500 µs
Gain	Optimal	Optimal
Z position	Optimal	Optimal

