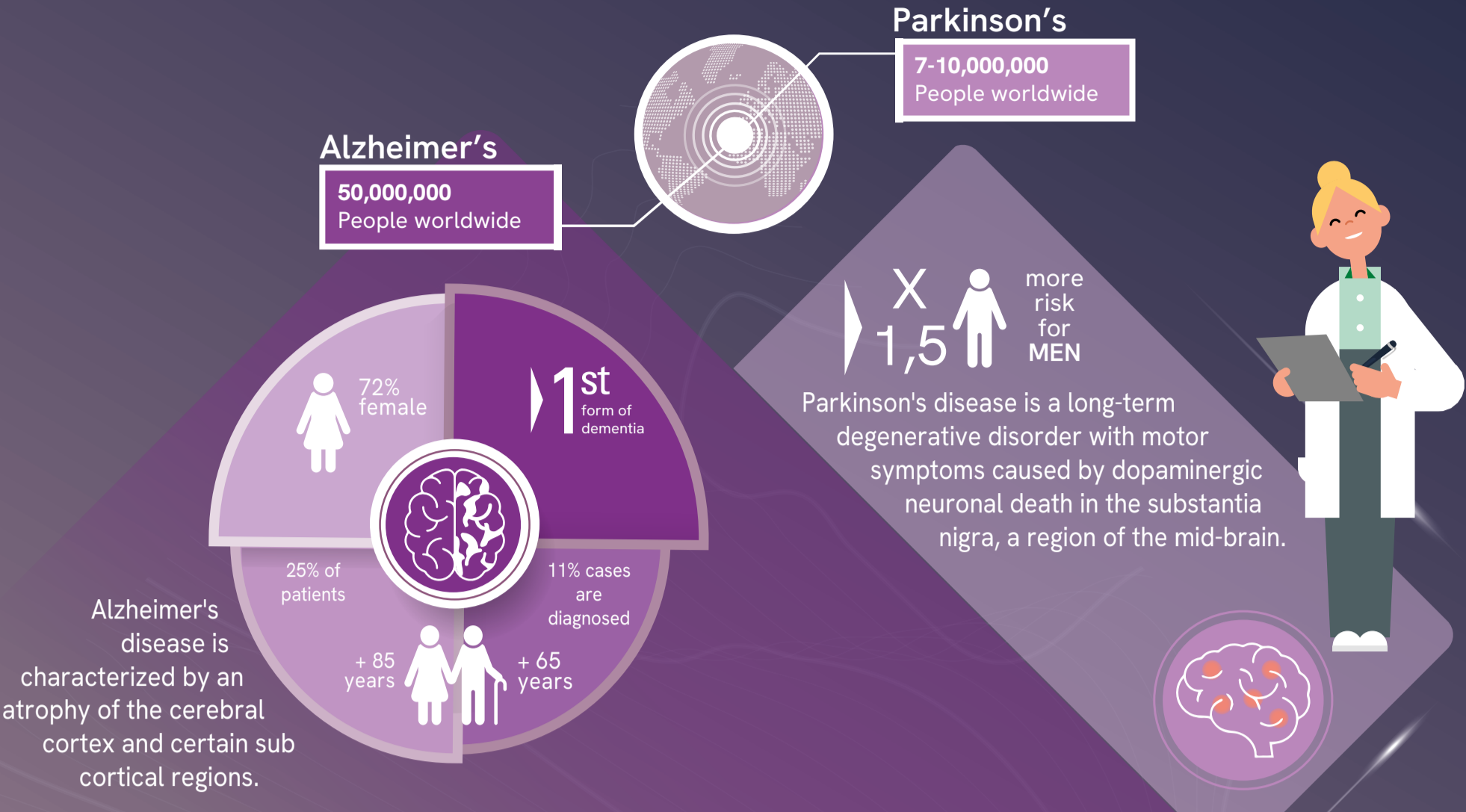


# Neurodegeneration

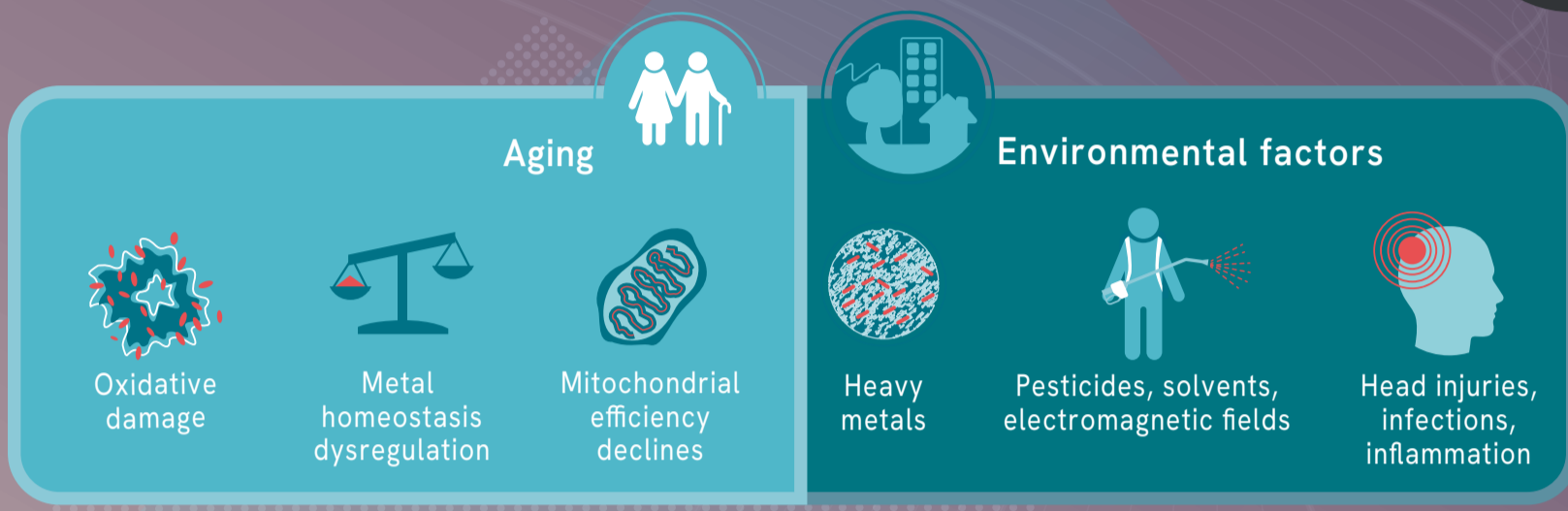
## And its main related diseases



### Key facts on diseases

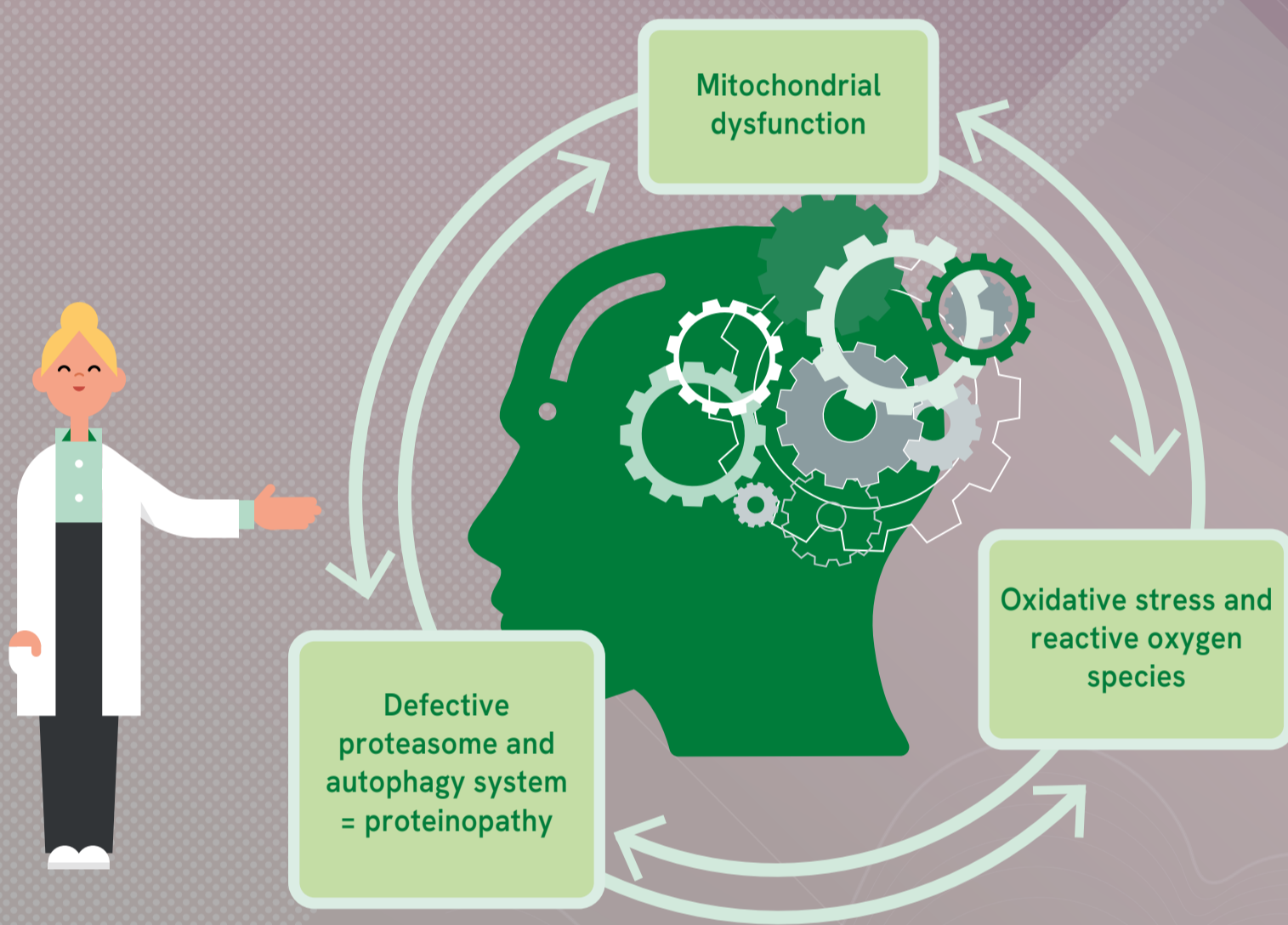


### Risk factors

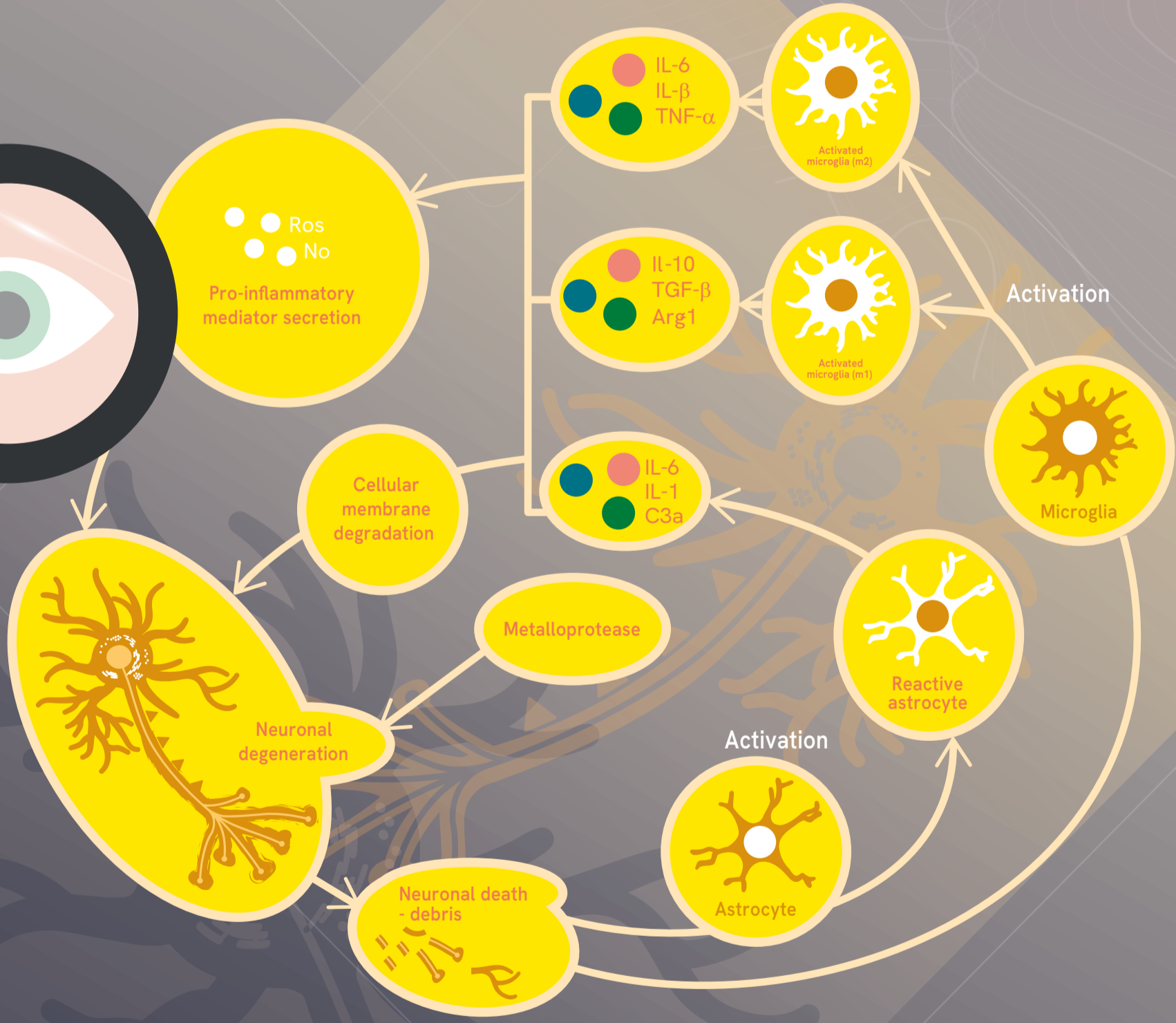


### Molecular progression

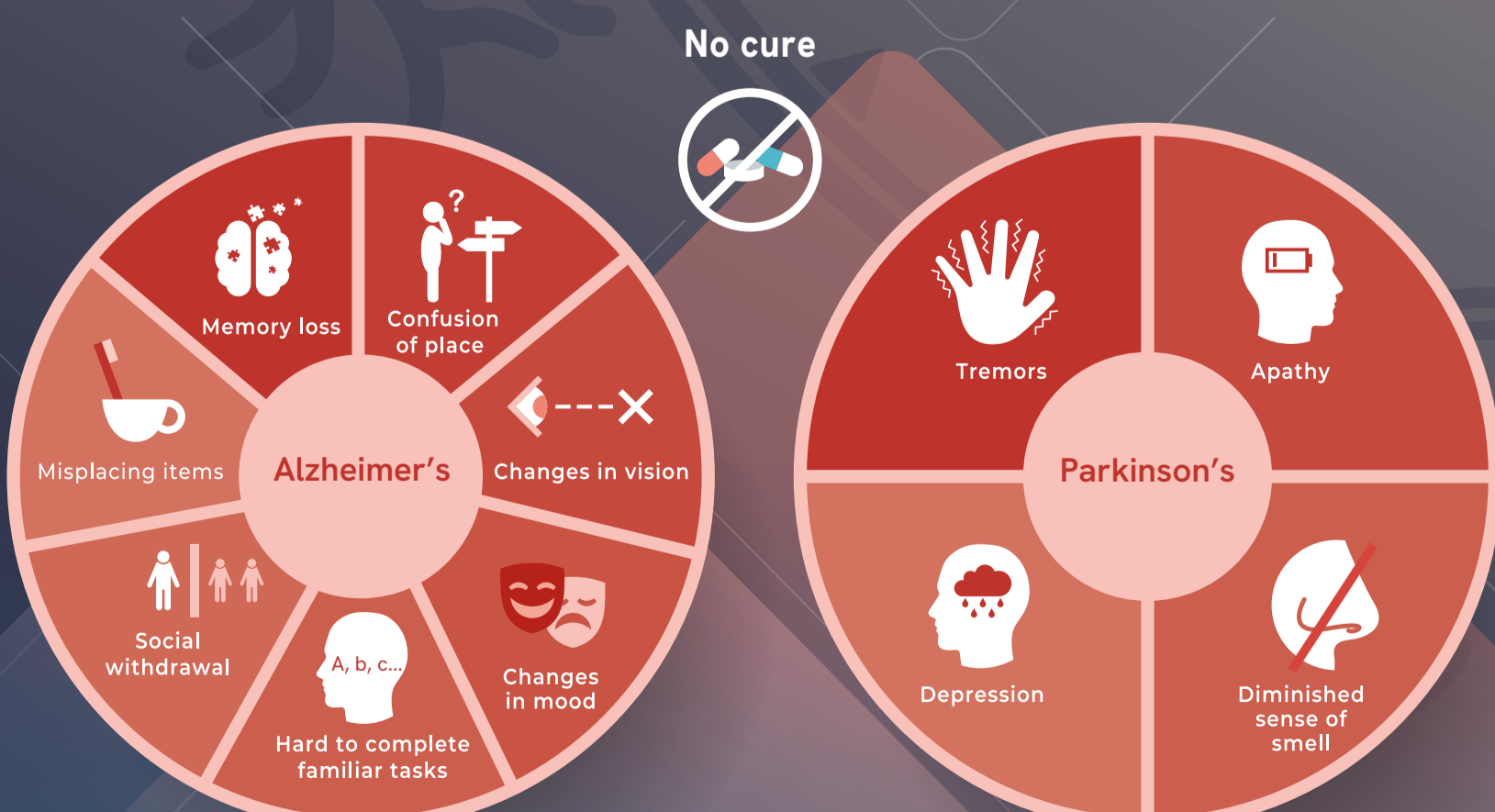
AD and PD progression is characterized by an abnormal accumulation of damaged proteins leading to cumulated dysfunctions, as detailed in this diagram



### Cellular types involved



### Symptoms and consequences



#### References

- Masters cl, bateman r, blennow k, rowe cc, sperling ra, cummings jl. Alzheimer's disease. Nature reviews. Disease primers 2015;1:15056
- Poewe w, seppi k, tanner cm, halliday gm, brundin p, volkmann j et al. Parkinson disease. Nature reviews. Disease primers 2017;3:17013.
- Subramanyam cs, wang c, hu q, dheen st. Microglia-mediated neuroinflammation in neurodegenerative diseases. Seminars in cell & developmental biology 2019.