

STING

The next candidate for cancer immunotherapy.

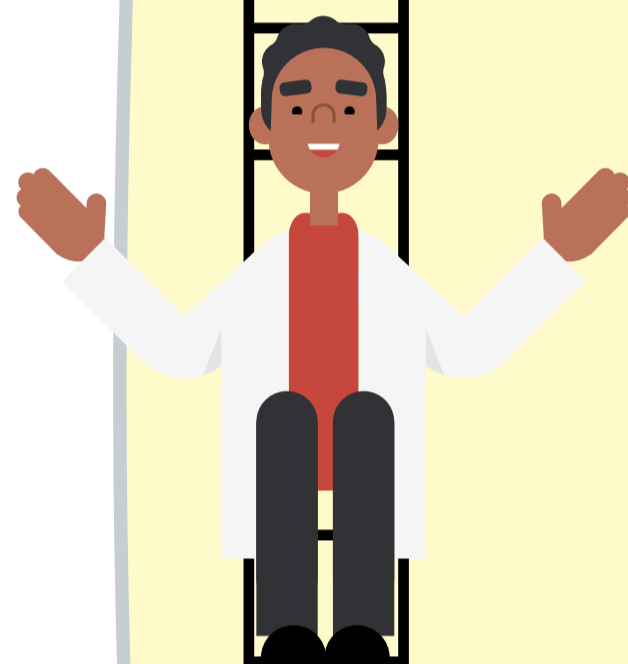
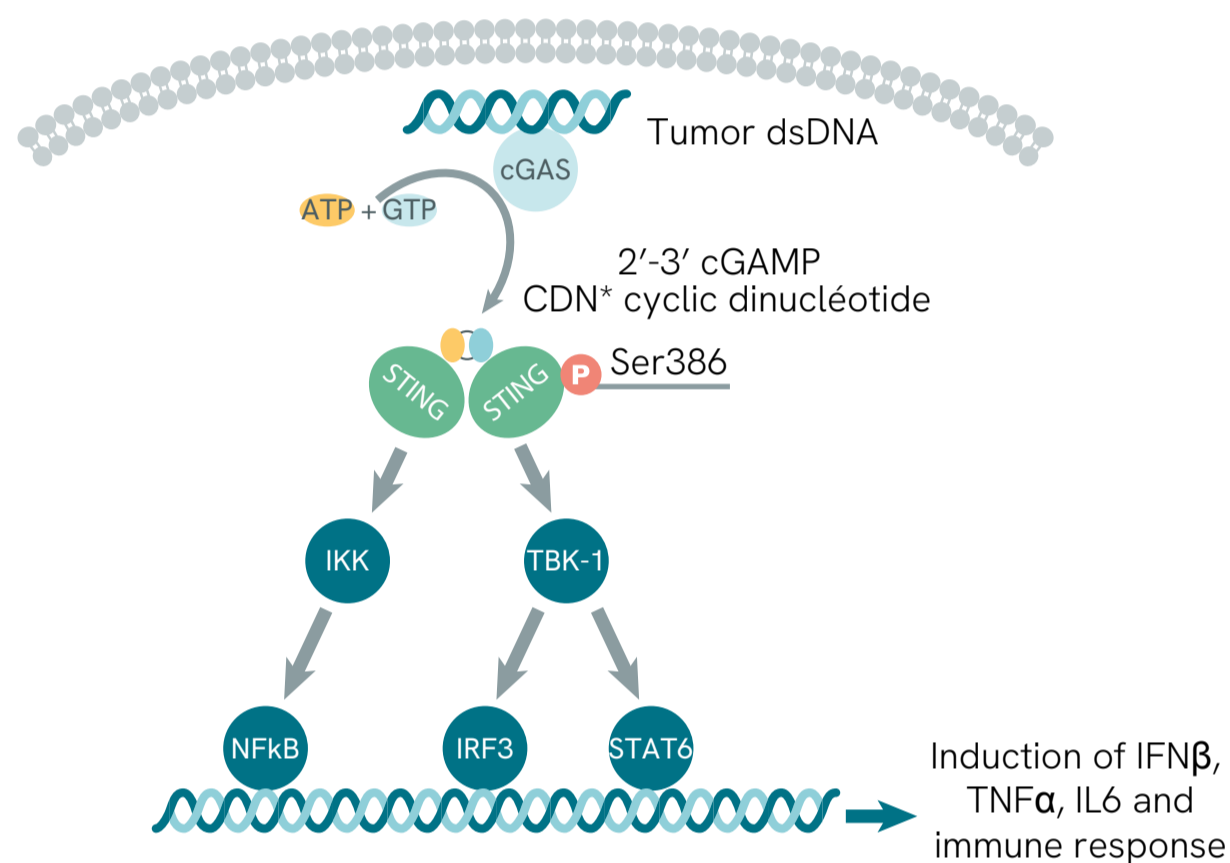
What is it?



STING (Stimulation of Interferon Genes)

- 2008: STING discovery¹
- 2013: CGAS discovery²
- Innate immunity actor
- Induces IFN β & IL1 production
- May enhance anti-tumor response

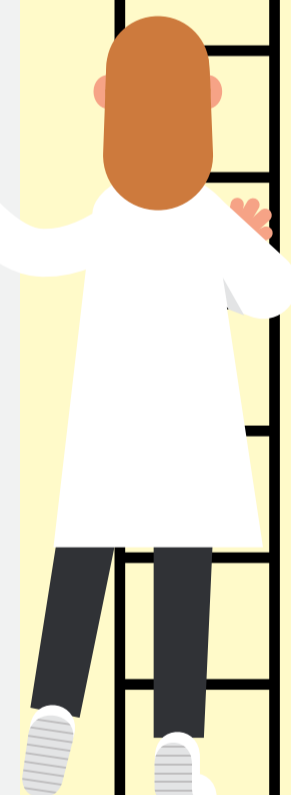
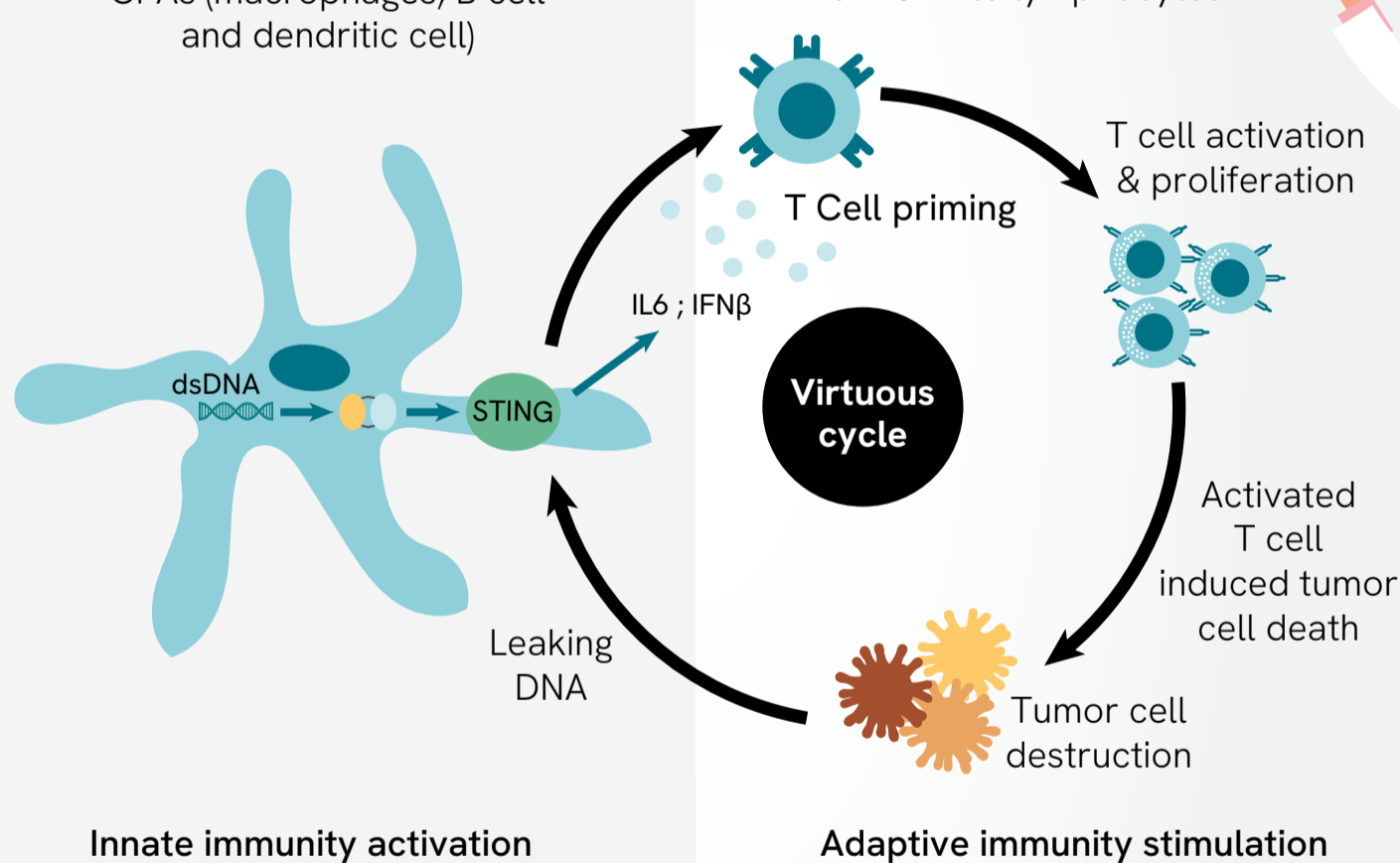
How does it work?



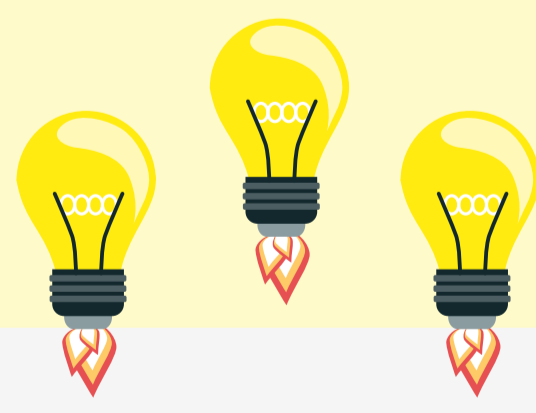
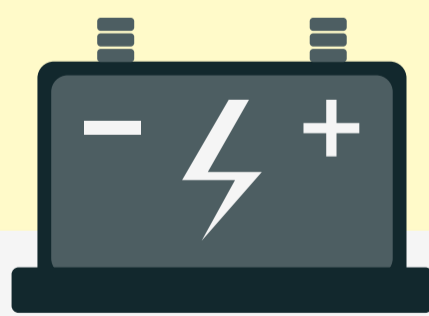
Which cells are involved?

STING pathway activation in CPAs (macrophages, B cell and dendritic cell)

Antigen presentation from CPA to lymphocytes



Why target STING?



STING

Tumor cells have mechanisms to hide from patient's immune responses. STING pathway remains dormant.

Synthetic agonist

To activate the STING pathway, an agonist which mimics STING's natural ligand is synthesized.

Activated STING

The agonist can be administered directly into the tumor area. It will activate STING. Patient's immunity is stimulated.

References

1. Science 2013, DOI: 10.1126/science.1232458)
2. Madej T, Lanczycki CJ, Zhang D, Thiessen PA, Geer RC, Marchler-Bauer A, Bryant SH. " MMDB and VAST+: tracking structural similarities between macromolecular complexes. Nucleic Acids Res. 2014 Jan; 42(Database issue):D297-303

Check the Revvity website and follow us!
www.revvity.com

revvity