



Safety rules

with Revvity biotherapeutic workflows.

Safety and efficacy are the very foundation of GMP manufacturing.

Revvity instruments, reagents and assays can help with detecting and quantifying harmful impurities during biotherapeutic production while improving reliability and reproducibility across your manufacturing workflow.

Cell line engineering

Accelerate cell line development with our streamlined process for **safer, more efficient** biotherapeutic molecule production, ensuring near 100% stability.

[Learn about CHOSOURCE™](#)

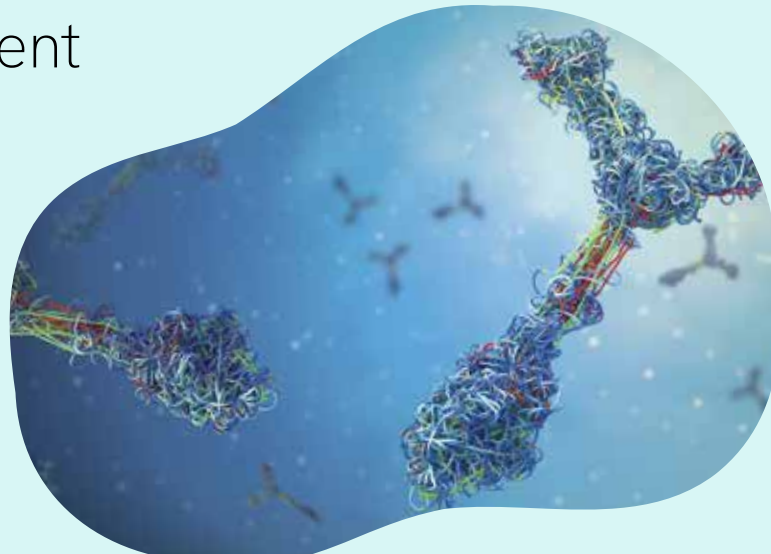


Image Cytometry

Ensure **efficacy** via screening for active clones, clone selection and monoclonality assurance with our automated high-speed image cytometry system.

[Learn about Celigo™](#)



Microplate Reader

Characterize therapeutic proteins from active clones with our innovative multimode detection platform that **enables safety** and **efficacy** via effective screening of active clones.

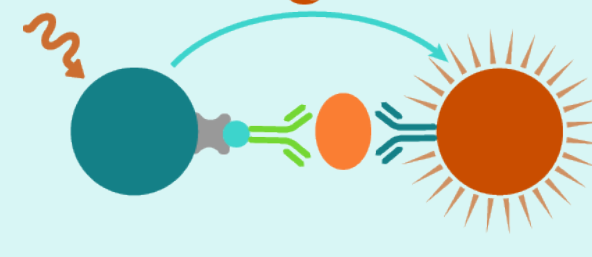
[Learn about EnVision Nexus™](#)



Host cell protein detection

Monitor host cell protein impurities with our accurate and sensitive no-wash, homogeneous assays to ensure the **safety** of your biotherapeutic drugs.

[Learn about HTRF™ and AlphaLISA™](#)



Host cell DNA detection

Track the presence of host cell DNA impurities with our DNA detection solutions and assess your biologics purity and help meet **regulatory compliance**.

[Learn about HostDetect™](#)



Protein characterization

Monitor identity, stability, glycosylation profiles, and functionality of biotherapeutics with high analytical sensitivity using our microfluidics-based LabChip system, ProteinEXact™ and Protein Clear assays.

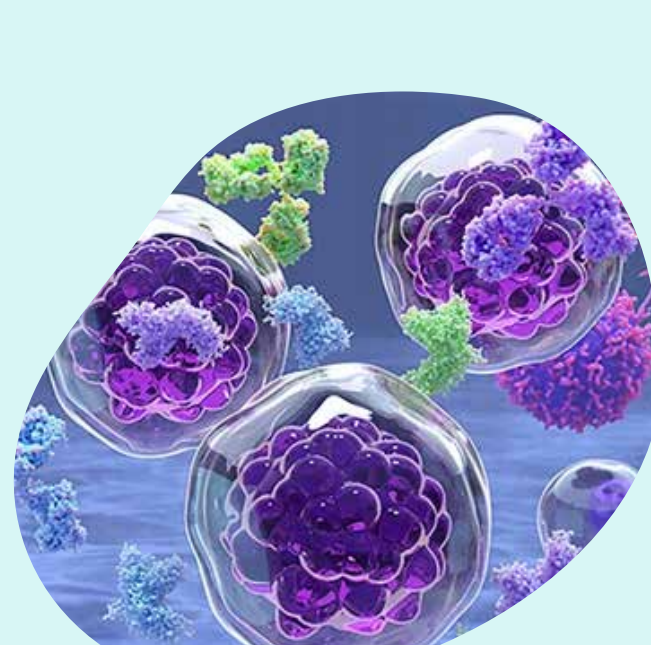
[Learn about LabChip™ and Protein Assay kits](#)



Custom GMP reagents

Meet **compliance requirements** and be confident in your products with our GMP portfolio for ex vivo cell processing and downstream manufacturing.

[Learn about Cell-Vive™ GMP portfolio](#)



What does Revvity provide?



Reliable, robust platforms

Unparalleled technical expertise



Solutions customized to your needs

United in technical support



For more information, visit: www.revvity.com

For research use only. Not for use in diagnostic procedures.

revvity

Copyright ©2024, Revvity. All rights reserved. Revvity is a registered trademark of Revvity. 1423965