

revvity

# HTRF Cytokine Assays



# A Full Range of Cytokines



Revvity's kits cover the full range of cytokines: interleukins, interferons (IFN), chemokines, TNF and lymphokines.

All our assays are cell based and measure cytokine release in cell supernatant.

They have been validated in several cell lines, primary cells and PBMCs to ensure relevance, and their low sample requirement enables the quantification of multiple cytokines in parallel from the same supernatant.

The HTRF® protocol makes them a fast alternative to ELISA or other measurement methods for researchers in the fields of oncology, inflammatory diseases or any other inflammation process

**This leaflet presents the analytical performances of each assay, the associated standard curve\* and the list of available references\*\*.**

\* To learn more about data processing and 4PL  $1/y^2$  fitting, we invite you to visit our dedicated webpage at <http://www.cisbio.com/4PL-regression>

\*\* Bulk size kits are available - please contact us

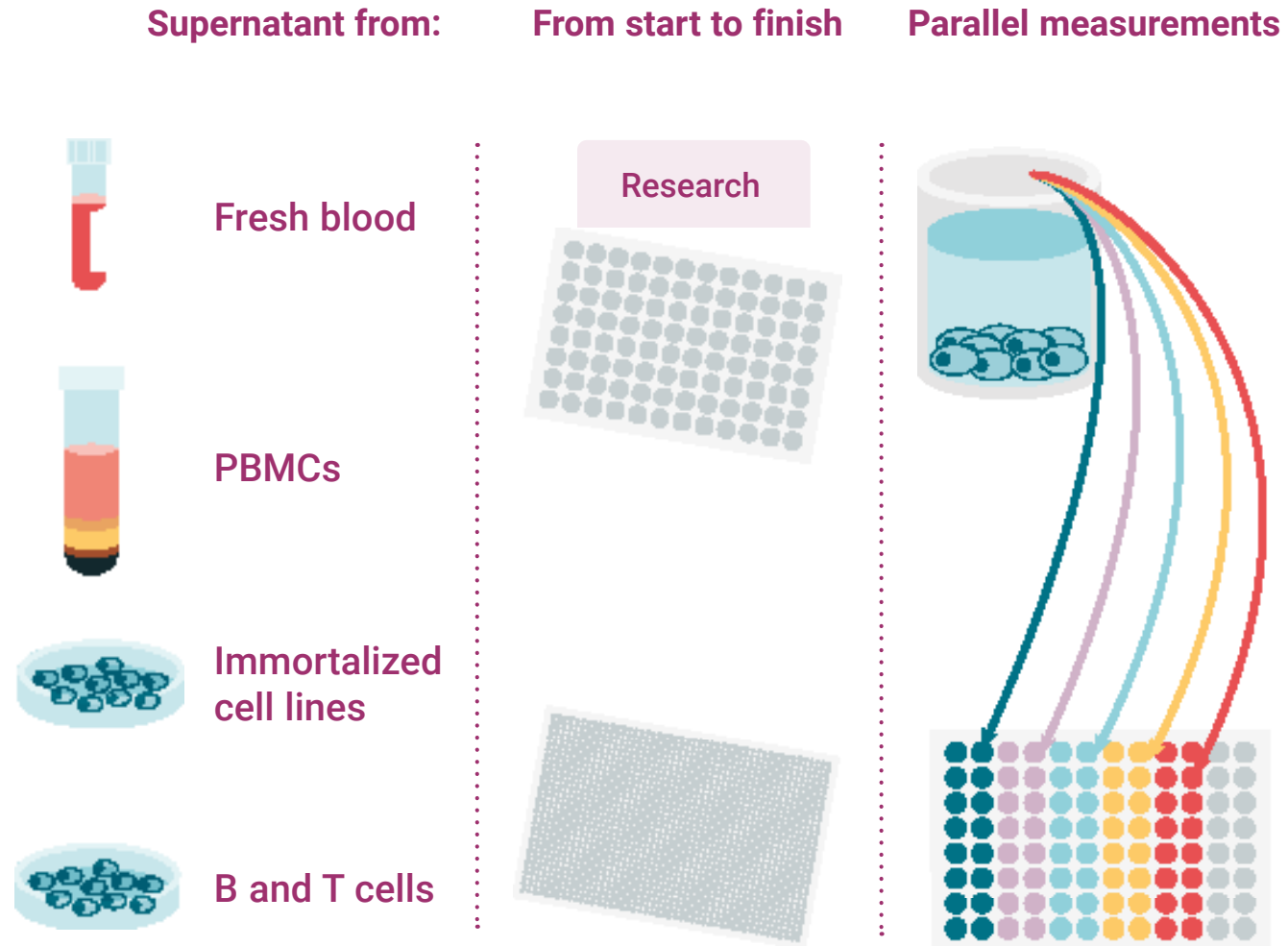
## TABLE OF CONTENTS

- A full range of cytokines
  - Rely on Validation
- 
- Human G-CSF kit
  - Human GM-CSF kit (CSF2)
  - Human IFN $\alpha$  kit
  - Human IFN $\beta$  kit
  - Mouse IFN $\beta$  kit
  - Human IFN $\gamma$  kit
  - Mouse IFN $\gamma$  kit
  - Human IL1 $\alpha$  kit
  - Mouse IL1 $\alpha$  kit
  - Human IL1 $\beta$  kit
  - Mouse IL1 $\beta$  kit
  - Human IL2 kit
  - Mouse IL2 kit
  - Human IL4 kit
  - Human IL5 kit
  - Human IL6 kit
  - Mouse IL6 kit
  - Human IL8 kit
  - Human IL10 kit
  - Human IL11 kit
  - Human IL12 kit
  - Human IL13 kit
  - Human IL17 kit
  - Mouse IL17 kit
  - Human IL18 kit
  - Human IL22 kit
  - Human IL23 kit
  - Human IL31 kit
  - Human & Mouse TGF $\beta$ 1 kit
  - Human TNF $\alpha$  kit
  - Mouse TNF $\alpha$  kit
  - Cynomolgus TNF $\alpha$  kit
  - Human CCL2 kit (MCP1)
  - Mouse CCL2 kit (MCP1)
  - Human CCL3 kit (MIP1 $\alpha$ )
  - Human CCL4 kit (MIP1 $\beta$ )
  - Human CCL5 kit (RANTES)
  - Human CCL20 kit
  - Human CXCL1 kit (GRO $\alpha$ )
  - Human CXCL10 kit (IP10)

# Strong assays

- ✓ Lyophilized standards
- ✓ Low sample volume: 16 µL
- ✓ Same buffers
- ✓ Single protocol
- ✓ 4PL 1/y<sup>2</sup> fitting

# Rely on validation



## TABLE OF CONTENTS

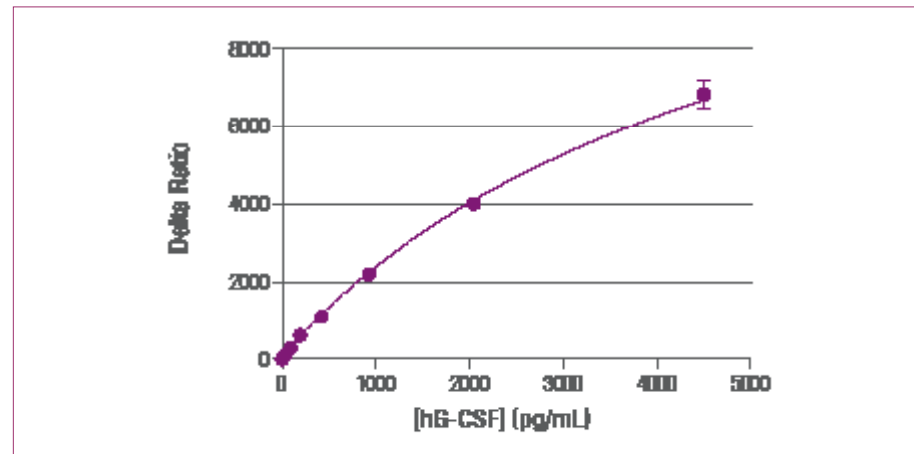
- A full range of cytokines
  - Rely on Validation
- 
- Human G-CSF kit
  - Human GM-CSF kit (CSF2)
  - Human IFN $\alpha$  kit
  - Human IFN $\beta$  kit
  - Mouse IFN $\beta$  kit
  - Human IFN $\gamma$  kit
  - Mouse IFN $\gamma$  kit
  - Human IL1 $\alpha$  kit
  - Mouse IL1 $\alpha$  kit
  - Human IL1 $\beta$  kit
  - Mouse IL1 $\beta$  kit
  - Human IL2 kit
  - Mouse IL2 kit
  - Human IL4 kit
  - Human IL5 kit
  - Human IL6 kit
  - Mouse IL6 kit
  - Human IL8 kit
  - Human IL10 kit
  - Human IL11 kit
  - Human IL12 kit
  - Human IL13 kit
  - Human IL17 kit
  - Mouse IL17 kit
  - Human IL18 kit
  - Human IL22 kit
  - Human IL23 kit
  - Human IL31 kit
  - Human & Mouse TGF $\beta$ 1 kit
  - Human TNF $\alpha$  kit
  - Mouse TNF $\alpha$  kit
  - Cynomolgus TNF $\alpha$  kit
  - Human CCL2 kit (MCP1)
  - Mouse CCL2 kit (MCP1)
  - Human CCL3 kit (MIP1 $\alpha$ )
  - Human CCL4 kit (MIP1 $\beta$ )
  - Human CCL5 kit (RANTES)
  - Human CCL20 kit
  - Human CXCL1 kit (GRO $\alpha$ )
  - Human CXCL10 kit (IP10)

# Human G-CSF kit

	Diluent	DMEM	RPMI
<b>Assay range</b>	47 to 4,500 pg/mL		
<b>LOD</b>	27 pg/mL	27 pg/mL	27 pg/mL
<b>LOQ</b>	47 pg/mL	-	-
<b>Incubation time</b>	Overnight at room temperature		
<b>Conversion factor</b>	NIBSC (09/136) value (IU/mL) = 0,07 x HTRF hGCSF value (pg/mL)		

**Ordering information:**

Product	Size	Part#
Human G-CSF kit	500 tests	62HGCSFPEG
Human G-CSF kit	10,000 tests	62HGCSFPEH

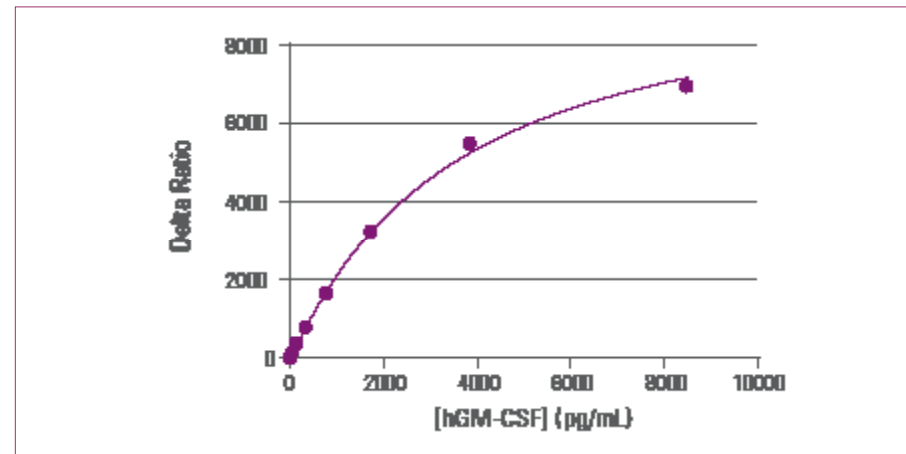


# Human GM-CSF kit (CSF2)

	Diluent	DMEM	RPMI
<b>Assay range</b>	54 to 8,500 pg/mL		
<b>LOD</b>	29 pg/mL	29 pg/mL	26 pg/mL
<b>LOQ</b>	54 pg/mL	-	-
<b>Incubation time</b>	3h at room temperature		
<b>Conversion factor</b>	NIBSC (88/646) value (IU/mL) = 0,01 x HTRF hGM-CSF value (pg/mL)		

**Ordering information:**

Product	Size	Part#
Human GM-CSF kit	500 tests	62HGMCSFPEG
Human GM-CSF kit	10,000 tests	62HGMCSFPEH



## TABLE OF CONTENTS

- A full range of cytokines
- Rely on Validation

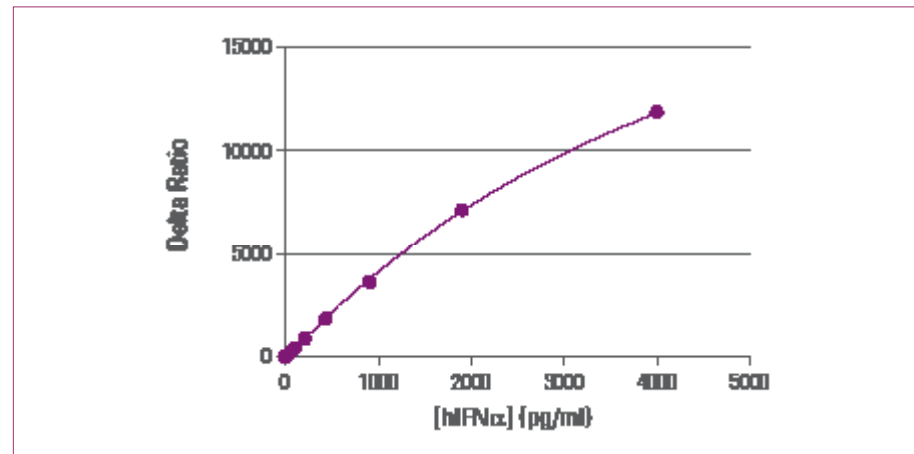
- Human G-CSF kit
- Human GM-CSF kit (CSF2)
- Human IFN $\alpha$  kit
- Human IFN $\beta$  kit
- Mouse IFN $\beta$  kit
- Human IFN $\gamma$  kit
- Mouse IFN $\gamma$  kit
- Human IL1 $\alpha$  kit
- Mouse IL1 $\alpha$  kit
- Human IL1 $\beta$  kit
- Mouse IL1 $\beta$  kit
- Human IL2 kit
- Mouse IL2 kit
- Human IL4 kit
- Human IL5 kit
- Human IL6 kit
- Mouse IL6 kit
- Human IL8 kit
- Human IL10 kit
- Human IL11 kit
- Human IL12 kit
- Human IL13 kit
- Human IL17 kit
- Mouse IL17 kit
- Human IL18 kit
- Human IL22 kit
- Human IL23 kit
- Human IL31 kit
- Human & Mouse TGF $\beta$ 1 kit
- Human TNF $\alpha$  kit
- Mouse TNF $\alpha$  kit
- Cynomolgus TNF $\alpha$  kit
- Human CCL2 kit (MCP1)
- Mouse CCL2 kit (MCP1)
- Human CCL3 kit (MIP1 $\alpha$ )
- Human CCL4 kit (MIP1 $\beta$ )
- Human CCL5 kit (RANTES)
- Human CCL20 kit
- Human CXCL1 kit (GRO $\alpha$ )
- Human CXCL10 kit (IP10)

# Human IFN $\alpha$ kit

	Diluent	DMEM	RPMI
<b>Assay range</b>	36 to 4000 pg/mL		
<b>LOD</b>	11 pg/mL	24 pg/mL	24 pg/mL
<b>LOQ</b>	36 pg/mL	-	-
<b>Incubation time</b>	2h at room temperature		
<b>Conversion factor</b>	NIBSC (94/784) value (IU/mL) = 0,9 x HTRF hIFN $\alpha$ value (pg/mL)		

### Ordering information:

Product	Size	Part#
Human IFN $\alpha$ kit	500 tests	62HIFNAPEG
Human IFN $\alpha$ kit	10,000 tests	62HIFNAPEH

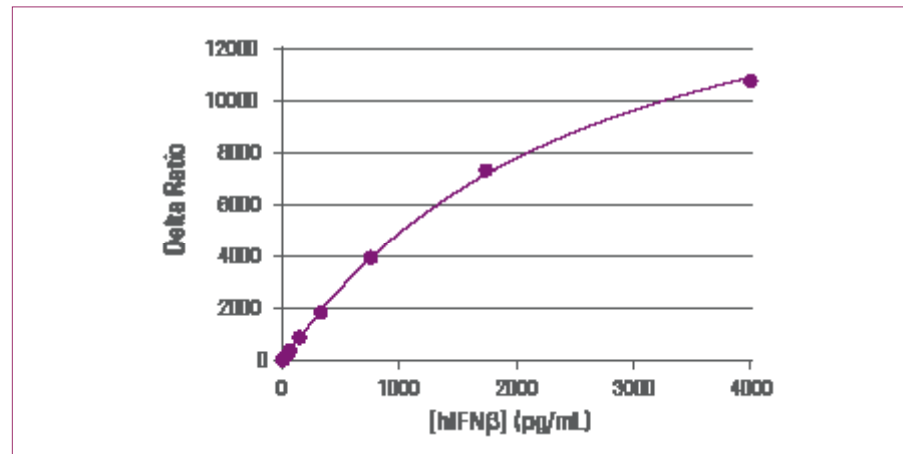


# Human IFN $\beta$ kit

	Diluent	DMEM	RPMI
<b>Assay range</b>	19 to 4,000 pg/mL		
<b>LOD</b>	7 pg/mL	21 pg/mL	20 pg/mL
<b>LOQ</b>	19 pg/mL	-	-
<b>Incubation time</b>	3h at room temperature		
<b>Conversion factor</b>	NIBSC (00/572) value (IU/mL) = 0,44 x HTRF hIFN $\beta$ value (pg/mL)		

### Ordering information:

Product	Size	Part#
Human IFN $\beta$ kit	500 tests	62HIFNBPEG
Human IFN $\beta$ kit	10,000 tests	62HIFNBPEH



## TABLE OF CONTENTS

- A full range of cytokines
- Rely on Validation

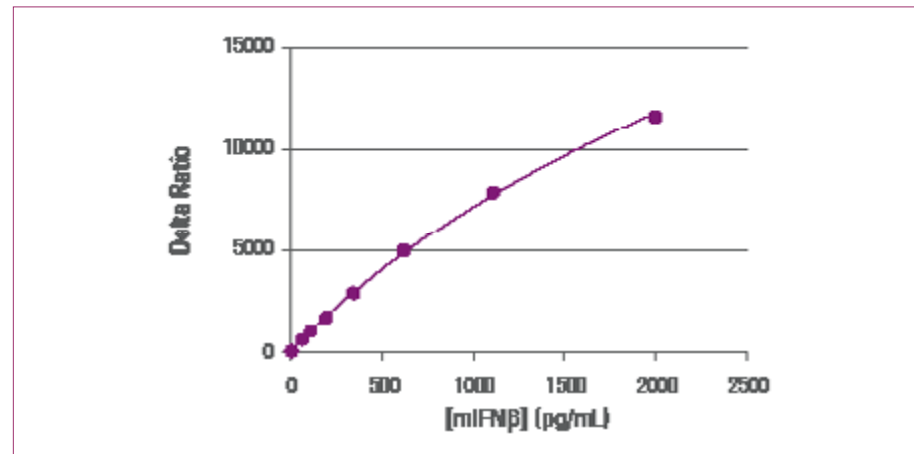
- Human G-CSF kit
- Human GM-CSF kit (CSF2)
- Human IFN $\alpha$  kit
- Human IFN $\beta$  kit
- Mouse IFN $\beta$  kit
- Human IFN $\gamma$  kit
- Mouse IFN $\gamma$  kit
- Human IL1 $\alpha$  kit
- Mouse IL1 $\alpha$  kit
- Human IL1 $\beta$  kit
- Mouse IL1 $\beta$  kit
- Human IL2 kit
- Mouse IL2 kit
- Human IL4 kit
- Human IL5 kit
- Human IL6 kit
- Mouse IL6 kit
- Human IL8 kit
- Human IL10 kit
- Human IL11 kit
- Human IL12 kit
- Human IL13 kit
- Human IL17 kit
- Mouse IL17 kit
- Human IL18 kit
- Human IL22 kit
- Human IL23 kit
- Human IL31 kit
- Human & Mouse TGF $\beta$ 1 kit
- Human TNF $\alpha$  kit
- Mouse TNF $\alpha$  kit
- Cynomolgus TNF $\alpha$  kit
- Human CCL2 kit (MCP1)
- Mouse CCL2 kit (MCP1)
- Human CCL3 kit (MIP1 $\alpha$ )
- Human CCL4 kit (MIP1 $\beta$ )
- Human CCL5 kit (RANTES)
- Human CCL20 kit
- Human CXCL1 kit (GRO $\alpha$ )
- Human CXCL10 kit (IP10)

# Mouse IFN $\beta$

	Diluent	DMEM	RPMI
<b>Assay range</b>	59 to 2,000 pg/mL		
<b>LOD</b>	4 pg/mL	17 pg/mL	7 pg/mL
<b>LOQ</b>	17 pg/mL	35 pg/mL	19 pg/mL
<b>Incubation time</b>	Overnight at RT		

### Ordering information:

Product	Size	Part#
Mouse IFN $\beta$ kit	500 tests	62MIFNBPEG
Mouse IFN $\beta$ kit	10,000 tests	62MIFNBPEH

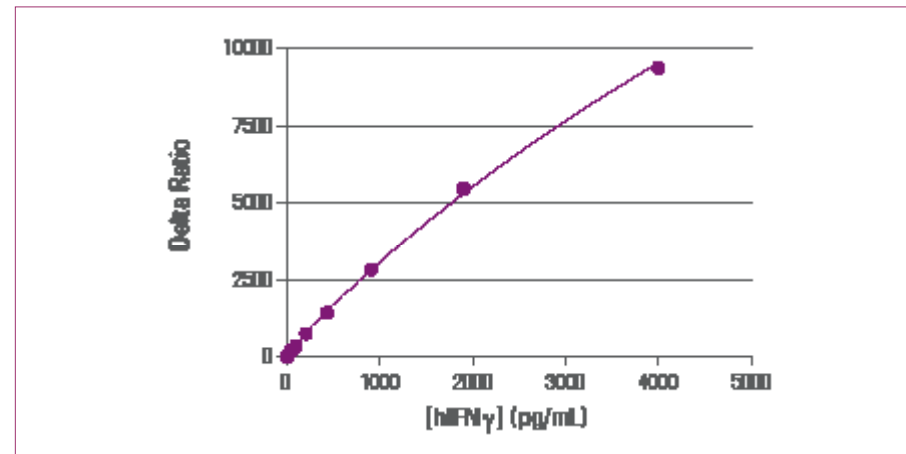


# Human IFN $\gamma$ kit

	Diluent	DMEM	RPMI
<b>Assay range</b>	21 to 4,000 pg/mL		
<b>LOD</b>	14 pg/mL	30 pg/mL	34 pg/mL
<b>LOQ</b>	21 pg/mL	-	-
<b>Incubation time</b>	Overnight at room temperature		
<b>Conversion factor</b>	NIBSC (82/587) value (IU/mL) = 0,019 x HTRF hIFN $\gamma$ value (pg/mL)		

### Ordering information:

Product	Size	Part#
Human IFN $\gamma$ kit	1 x 96 tests	62HIFNGPET
Human IFN $\gamma$ kit	500 tests	62HIFNGPEG
Human IFN $\gamma$ kit	10,000 tests	62HIFNGPEH



## TABLE OF CONTENTS

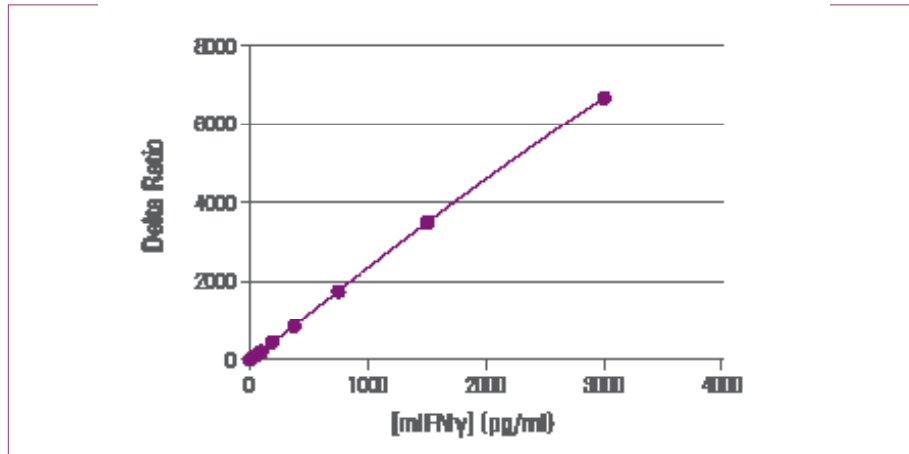
- A full range of cytokines
  - Rely on Validation
- 
- Human G-CSF kit
  - Human GM-CSF kit (CSF2)
  - Human IFN $\alpha$  kit
  - Human IFN $\beta$  kit
  - Mouse IFN $\beta$  kit
  - Human IFN $\gamma$  kit
  - Mouse IFN $\gamma$  kit
  - Human IL1 $\alpha$  kit
  - Mouse IL1 $\alpha$  kit
  - Human IL1 $\beta$  kit
  - Mouse IL1 $\beta$  kit
  - Human IL2 kit
  - Mouse IL2 kit
  - Human IL4 kit
  - Human IL5 kit
  - Human IL6 kit
  - Mouse IL6 kit
  - Human IL8 kit
  - Human IL10 kit
  - Human IL11 kit
  - Human IL12 kit
  - Human IL13 kit
  - Human IL17 kit
  - Mouse IL17 kit
  - Human IL18 kit
  - Human IL22 kit
  - Human IL23 kit
  - Human IL31 kit
  - Human & Mouse TGF $\beta$ 1 kit
  - Human TNF $\alpha$  kit
  - Mouse TNF $\alpha$  kit
  - Cynomolgus TNF $\alpha$  kit
  - Human CCL2 kit (MCP1)
  - Mouse CCL2 kit (MCP1)
  - Human CCL3 kit (MIP1 $\alpha$ )
  - Human CCL4 kit (MIP1 $\beta$ )
  - Human CCL5 kit (RANTES)
  - Human CCL20 kit
  - Human CXCL1 kit (GRO $\alpha$ )
  - Human CXCL10 kit (IP10)

# Mouse IFN $\gamma$ kit

	Diluent	DMEM	RPMI
<b>Assay range</b>	34 to 3,000 pg/mL		
<b>LOD</b>	23 pg/mL	31 pg/mL	30 pg/mL
<b>LOQ</b>	34 pg/mL	-	-
<b>Incubation time</b>	2h at room temperature		

**Ordering information:**

Product	Size	Part#
Mouse IFN $\gamma$ kit	500 tests	62MIFNGPEG
Mouse IFN $\gamma$ kit	10,000 tests	62MIFNGPEH

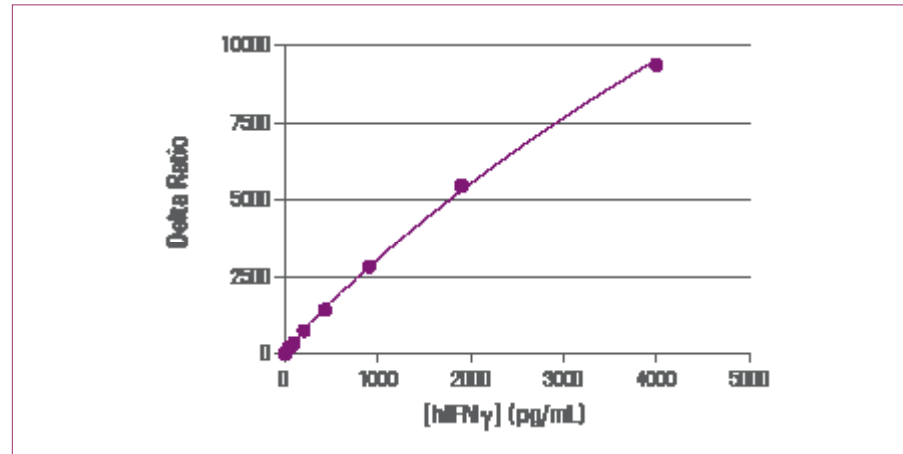


# Human IL1 $\alpha$ kit

	Diluent	DMEM	RPMI
<b>Assay range</b>	20.5 to 5,000 pg/mL		
<b>LOD</b>	8 pg/mL	7 pg/mL	7 pg/mL
<b>LOQ</b>	20.5 pg/mL	-	-
<b>Incubation time</b>	2h at room temperature		
<b>Conversion factor</b>	NIBSC (86/632) value (IU/mL) = 10 x HTRF hIL1 $\alpha$ value (pg/mL)		

**Ordering information:**

Product	Size	Part#
Human IL1 $\alpha$ kit	500 tests	62HIL1APEG
Human IL1 $\alpha$ kit	10,000 tests	62HIL1APEH



## TABLE OF CONTENTS

- A full range of cytokines
  - Rely on Validation
- 
- Human G-CSF kit
  - Human GM-CSF kit (CSF2)
  - Human IFN $\alpha$  kit
  - Human IFN $\beta$  kit
  - Mouse IFN $\beta$  kit
  - Human IFN $\gamma$  kit
  - Mouse IFN $\gamma$  kit
  - Human IL1 $\alpha$  kit
  - Mouse IL1 $\alpha$  kit
  - Human IL1 $\beta$  kit
  - Mouse IL1 $\beta$  kit
  - Human IL2 kit
  - Mouse IL2 kit
  - Human IL4 kit
  - Human IL5 kit
  - Human IL6 kit
  - Mouse IL6 kit
  - Human IL8 kit
  - Human IL10 kit
  - Human IL11 kit
  - Human IL12 kit
  - Human IL13 kit
  - Human IL17 kit
  - Mouse IL17 kit
  - Human IL18 kit
  - Human IL22 kit
  - Human IL23 kit
  - Human IL31 kit
  - Human & Mouse TGF $\beta$ 1 kit
  - Human TNF $\alpha$  kit
  - Mouse TNF $\alpha$  kit
  - Cynomolgus TNF $\alpha$  kit
  - Human CCL2 kit (MCP1)
  - Mouse CCL2 kit (MCP1)
  - Human CCL3 kit (MIP1 $\alpha$ )
  - Human CCL4 kit (MIP1 $\beta$ )
  - Human CCL5 kit (RANTES)
  - Human CCL20 kit
  - Human CXCL1 kit (GRO $\alpha$ )
  - Human CXCL10 kit (IP10)

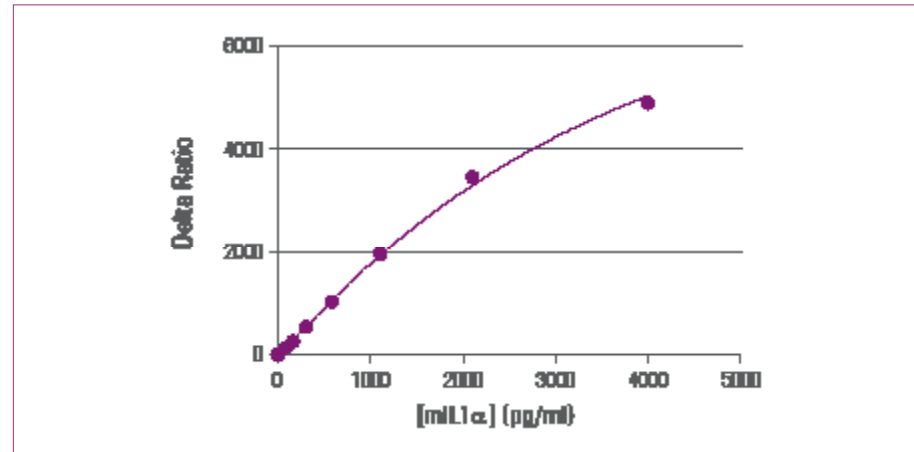


# Mouse IL1 $\alpha$ kit

	Diluent	DMEM	RPMI
<b>Assay range</b>	62 to 4,000 pg/mL		
<b>LOD</b>	34 pg/mL	37 pg/mL	41 pg/mL
<b>LOQ</b>	62 pg/mL	-	-
<b>Incubation time</b>	3h at room temperature		
<b>Conversion factor</b>	NIBSC (93/672) value (IU/mL) = 1,2 x HTRF mIL1 $\alpha$ value (pg/mL)		

### Ordering information:

Product	Size	Part#
Mouse IL1 $\alpha$ kit	500 tests	62MIL1APEG
Mouse IL1 $\alpha$ kit	10,000 tests	62MIL1APEH

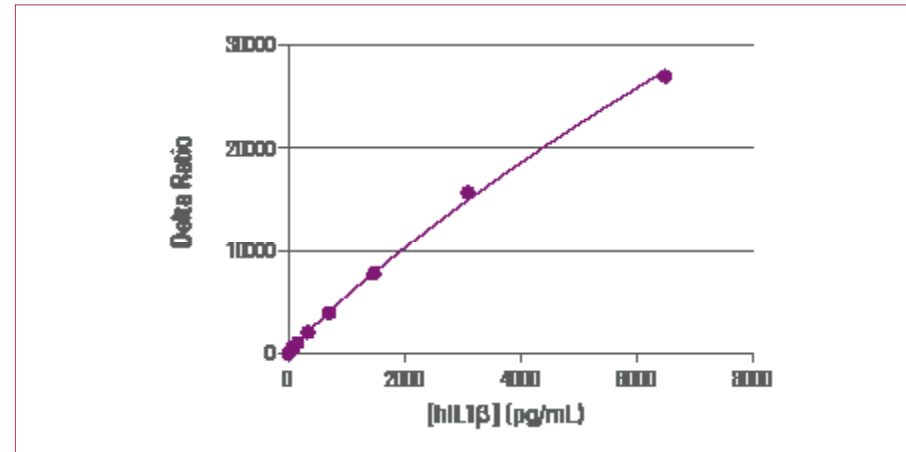


# Human IL1 $\beta$ kit

	Diluent	DMEM	RPMI
<b>Assay range</b>	39 to 6,500 pg/mL		
<b>LOD</b>	5 pg/mL	21 pg/mL	6 pg/mL
<b>LOQ</b>	39 pg/mL	-	-
<b>Incubation time</b>	Overnight at room temperature		
<b>Conversion factor</b>	NIBSC (86/680) value (IU/mL) = 0,1 x HTRF hIL1 $\beta$ value (pg/mL)		

### Ordering information:

Product	Size	Part#
Human IL1 $\beta$ kit	1 x 96 tests	62HIL1BPET
Human IL1 $\beta$ kit	500 tests	62HIL1BPEG
Human IL1 $\beta$ kit	10,000 tests	62HIL1BPEH



## TABLE OF CONTENTS

- A full range of cytokines
  - Rely on Validation
- 
- Human G-CSF kit
  - Human GM-CSF kit (CSF2)
  - Human IFN $\alpha$  kit
  - Human IFN $\beta$  kit
  - Mouse IFN $\beta$  kit
  - Human IFN $\gamma$  kit
  - Mouse IFN $\gamma$  kit
  - Human IL1 $\alpha$  kit
  - Mouse IL1 $\alpha$  kit
  - Human IL1 $\beta$  kit
  - Mouse IL1 $\beta$  kit
  - Human IL2 kit
  - Mouse IL2 kit
  - Human IL4 kit
  - Human IL5 kit
  - Human IL6 kit
  - Mouse IL6 kit
  - Human IL8 kit
  - Human IL10 kit
  - Human IL11 kit
  - Human IL12 kit
  - Human IL13 kit
  - Human IL17 kit
  - Mouse IL17 kit
  - Human IL18 kit
  - Human IL22 kit
  - Human IL23 kit
  - Human IL31 kit
  - Human & Mouse TGF $\beta$ 1 kit
  - Human TNF $\alpha$  kit
  - Mouse TNF $\alpha$  kit
  - Cynomolgus TNF $\alpha$  kit
  - Human CCL2 kit (MCP1)
  - Mouse CCL2 kit (MCP1)
  - Human CCL3 kit (MIP1 $\alpha$ )
  - Human CCL4 kit (MIP1 $\beta$ )
  - Human CCL5 kit (RANTES)
  - Human CCL20 kit
  - Human CXCL1 kit (GRO $\alpha$ )
  - Human CXCL10 kit (IP10)

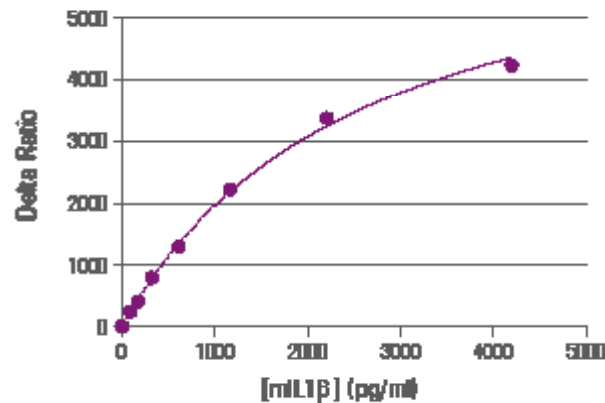


# Mouse IL1 $\beta$ kit

	Diluent	DMEM	RPMI
<b>Assay range</b>	46 to 4,200 pg/mL		
<b>LOD</b>	14 pg/mL	39 pg/mL	37 pg/mL
<b>LOQ</b>	46 pg/mL	-	-
<b>Incubation time</b>	Overnight at room temperature		
<b>Conversion factor</b>	NIBSC (93/668) value (IU/mL) = 0,1 x HTRF mIL1 $\beta$ value (pg/mL)		

### Ordering information:

Product	Size	Part#
Mouse IL1 $\beta$ kit	500 tests	62MIL1BPEG
Mouse IL1 $\beta$ kit	10,000 tests	62MIL1BPEH

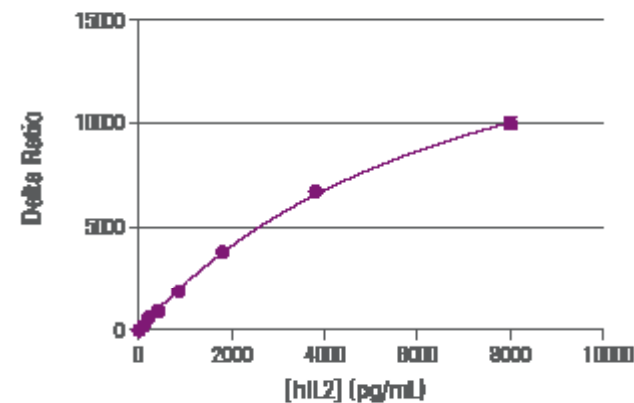


# Human IL2 kit

	Diluent	DMEM	RPMI
<b>Assay range</b>	37 to 8,000 pg/mL		
<b>LOD</b>	7 pg/mL	27 pg/mL	17 pg/mL
<b>LOQ</b>	37 pg/mL	-	-
<b>Incubation time</b>	3h at room temperature		
<b>Conversion factor</b>	NIBSC (86/500) value (IU/mL) = 0,01 x HTRF hIL2 value (pg/mL)		

### Ordering information:

Product	Size	Part#
Human IL2 kit	1 x 96 tests	62HIL02PET
Human IL2 kit	500 tests	62HIL02PEG
Human IL2 kit	10,000 tests	62HIL02PEH



## TABLE OF CONTENTS

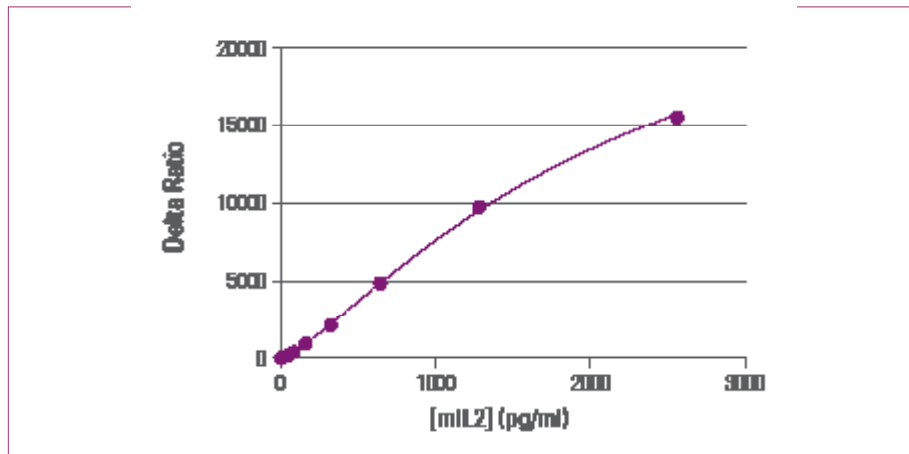
- A full range of cytokines
  - Rely on Validation
- 
- Human G-CSF kit
  - Human GM-CSF kit (CSF2)
  - Human IFN $\alpha$  kit
  - Human IFN $\beta$  kit
  - Mouse IFN $\beta$  kit
  - Human IFN $\gamma$  kit
  - Mouse IFN $\gamma$  kit
  - Human IL1 $\alpha$  kit
  - Mouse IL1 $\alpha$  kit
  - Human IL1 $\beta$  kit
  - Mouse IL1 $\beta$  kit
  - Human IL2 kit
  - Mouse IL2 kit
  - Human IL4 kit
  - Human IL5 kit
  - Human IL6 kit
  - Mouse IL6 kit
  - Human IL8 kit
  - Human IL10 kit
  - Human IL11 kit
  - Human IL12 kit
  - Human IL13 kit
  - Human IL17 kit
  - Mouse IL17 kit
  - Human IL18 kit
  - Human IL22 kit
  - Human IL23 kit
  - Human IL31 kit
  - Human & Mouse TGF $\beta$ 1 kit
  - Human TNF $\alpha$  kit
  - Mouse TNF $\alpha$  kit
  - Cynomolgus TNF $\alpha$  kit
  - Human CCL2 kit (MCP1)
  - Mouse CCL2 kit (MCP1)
  - Human CCL3 kit (MIP1 $\alpha$ )
  - Human CCL4 kit (MIP1 $\beta$ )
  - Human CCL5 kit (RANTES)
  - Human CCL20 kit
  - Human CXCL1 kit (GRO $\alpha$ )
  - Human CXCL10 kit (IP10)

# Mouse IL2 kit

	Diluent	DMEM	RPMI
<b>Assay range</b>	35 to 2,560 pg/mL		
<b>LOD</b>	12 pg/mL	27 pg/mL	16 pg/mL
<b>LOQ</b>	35 pg/mL	-	-
<b>Incubation time</b>	Overnight at room temperature		

**Ordering information:**

Product	Size	Part#
Mouse IL2 kit	500 tests	62MIL02PEG
Mouse IL2 kit	10,000 tests	62MIL02PEH

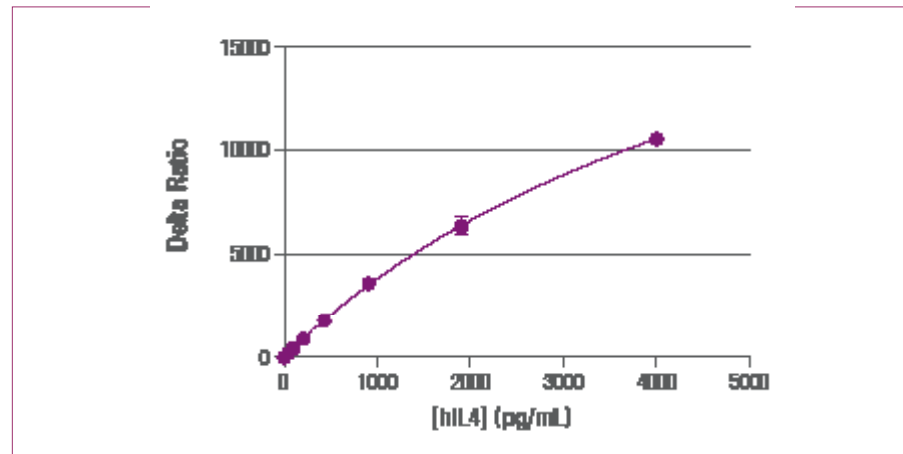


# Human IL4 kit

	Diluent	DMEM	RPMI
<b>Assay range</b>	29 to 4,000 pg/mL		
<b>LOD</b>	8 pg/mL	19 pg/mL	10 pg/mL
<b>LOQ</b>	29 pg/mL	-	-
<b>Incubation time</b>	2h at room temperature		
<b>Conversion factor</b>	NIBSC (88/656) value (IU/mL) = 0,012 x HTRF hIL4 value (pg/mL)		

**Ordering information:**

Product	Size	Part#
Human IL4 kit	500 tests	62HIL04PEG
Human IL4 kit	10,000 tests	62HIL04PEH



## TABLE OF CONTENTS

- A full range of cytokines
  - Rely on Validation
- 
- Human G-CSF kit
  - Human GM-CSF kit (CSF2)
  - Human IFN $\alpha$  kit
  - Human IFN $\beta$  kit
  - Mouse IFN $\beta$  kit
  - Human IFN $\gamma$  kit
  - Mouse IFN $\gamma$  kit
  - Human IL1 $\alpha$  kit
  - Mouse IL1 $\alpha$  kit
  - Human IL1 $\beta$  kit
  - Mouse IL1 $\beta$  kit
  - Human IL2 kit
  - Mouse IL2 kit
  - Human IL4 kit
  - Human IL5 kit
  - Human IL6 kit
  - Mouse IL6 kit
  - Human IL8 kit
  - Human IL10 kit
  - Human IL11 kit
  - Human IL12 kit
  - Human IL13 kit
  - Human IL17 kit
  - Mouse IL17 kit
  - Human IL18 kit
  - Human IL22 kit
  - Human IL23 kit
  - Human IL31 kit
  - Human & Mouse TGF $\beta$ 1 kit
  - Human TNF $\alpha$  kit
  - Mouse TNF $\alpha$  kit
  - Cynomolgus TNF $\alpha$  kit
  - Human CCL2 kit (MCP1)
  - Mouse CCL2 kit (MCP1)
  - Human CCL3 kit (MIP1 $\alpha$ )
  - Human CCL4 kit (MIP1 $\beta$ )
  - Human CCL5 kit (RANTES)
  - Human CCL20 kit
  - Human CXCL1 kit (GRO $\alpha$ )
  - Human CXCL10 kit (IP10)

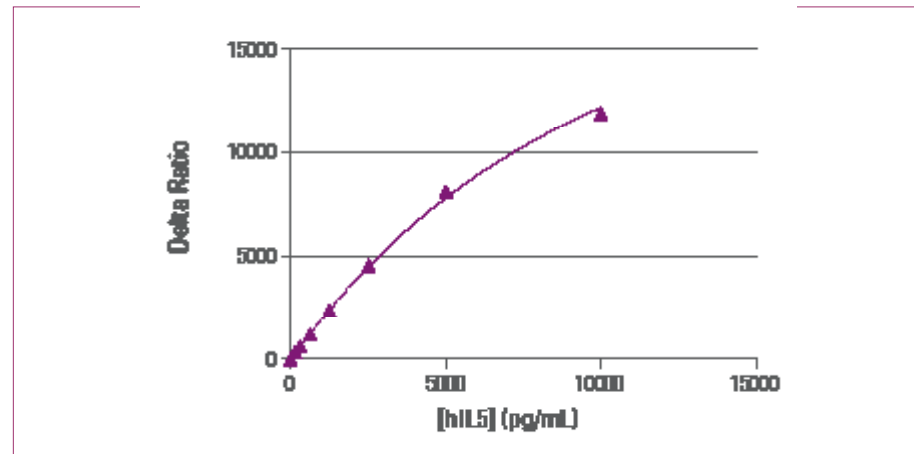


# Human IL5 kit

	Diluent	DMEM	RPMI
<b>Assay range</b>	71 to 10,000 pg/mL		
<b>LOD</b>	15 pg/mL	24 pg/mL	14 pg/mL
<b>LOQ</b>	71 pg/mL	-	-
<b>Incubation time</b>	2h at room temperature		
<b>Conversion factor</b>	NIBSC (90/586) value (IU/mL) = 0,012 x HTRF hIL5 value (pg/mL)		

### Ordering information:

Product	Size	Part#
Human IL5 kit	500 tests	62HIL05PEG
Human IL5 kit	10,000 tests	62HIL05PEH

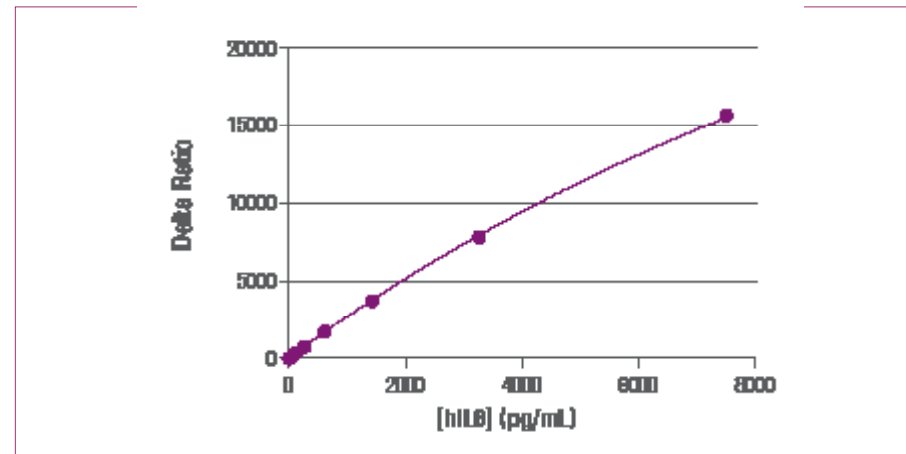


# Human IL6 kit

	Diluent	DMEM	RPMI
<b>Assay range</b>	34 to 7,500 pg/mL		
<b>LOD</b>	8 pg/mL	19 pg/mL	23 pg/mL
<b>LOQ</b>	34 pg/mL	-	-
<b>Incubation time</b>	2h at room temperature		
<b>Conversion factor</b>	NIBSC (89/548) value (IU/mL) = 0,1 x HTRF hIL6 value (pg/mL)		

### Ordering information:

Product	Size	Part#
Human IL6 kit	1 x 96 tests	62HIL06PET
Human IL6 kit	500 tests	62HIL06PEG
Human IL6 kit	10,000 tests	62HIL06PEH



## TABLE OF CONTENTS

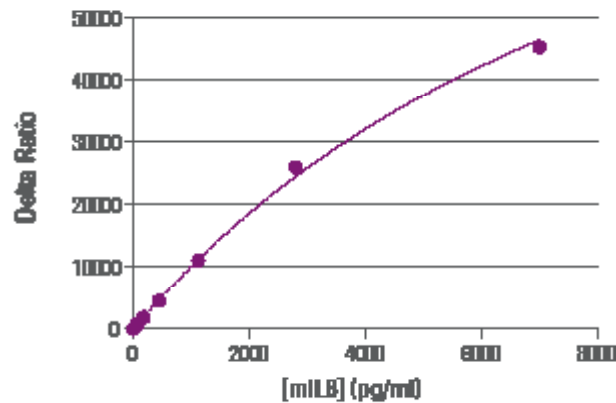
- A full range of cytokines
  - Rely on Validation
- 
- Human G-CSF kit
  - Human GM-CSF kit (CSF2)
  - Human IFN $\alpha$  kit
  - Human IFN $\beta$  kit
  - Mouse IFN $\beta$  kit
  - Human IFN $\gamma$  kit
  - Mouse IFN $\gamma$  kit
  - Human IL1 $\alpha$  kit
  - Mouse IL1 $\alpha$  kit
  - Human IL1 $\beta$  kit
  - Mouse IL1 $\beta$  kit
  - Human IL2 kit
  - Mouse IL2 kit
  - Human IL4 kit
  - Human IL5 kit
  - Human IL6 kit
  - Mouse IL6 kit
  - Human IL8 kit
  - Human IL10 kit
  - Human IL11 kit
  - Human IL12 kit
  - Human IL13 kit
  - Human IL17 kit
  - Mouse IL17 kit
  - Human IL18 kit
  - Human IL22 kit
  - Human IL23 kit
  - Human IL31 kit
  - Human & Mouse TGF $\beta$ 1 kit
  - Human TNF $\alpha$  kit
  - Mouse TNF $\alpha$  kit
  - Cynomolgus TNF $\alpha$  kit
  - Human CCL2 kit (MCP1)
  - Mouse CCL2 kit (MCP1)
  - Human CCL3 kit (MIP1 $\alpha$ )
  - Human CCL4 kit (MIP1 $\beta$ )
  - Human CCL5 kit (RANTES)
  - Human CCL20 kit
  - Human CXCL1 kit (GRO $\alpha$ )
  - Human CXCL10 kit (IP10)

# Mouse IL6 kit

	Diluent	DMEM	RPMI
<b>Assay range</b>	19 to 7,000 pg/mL		
<b>LOD</b>	6 pg/mL	13 pg/mL	9 pg/mL
<b>LOQ</b>	19 pg/mL	-	-
<b>Incubation time</b>	1h at room temperature		
<b>Conversion factor</b>	NIBSC (93/730) value (IU/mL) = 0,7 x HTRF mIL6 value (pg/mL)		

### Ordering information:

Product	Size	Part#
Mouse IL6 kit	500 tests	62MIL06PEG
Mouse IL6 kit	10,000 tests	62MIL06PEH

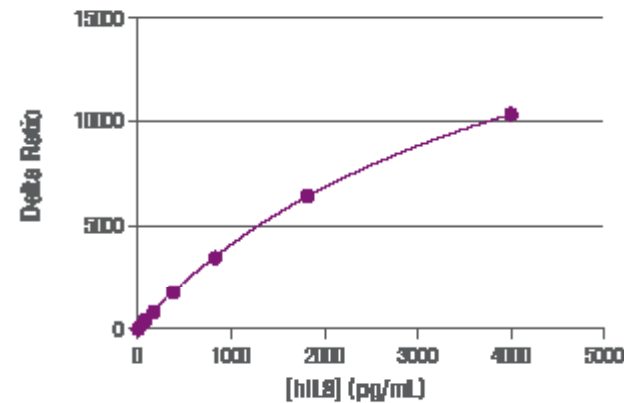


# Human IL8 kit

	Diluent	DMEM	RPMI
<b>Assay range</b>	32 to 4,000 pg/mL		
<b>LOD</b>	6 pg/mL	11 pg/mL	8 pg/mL
<b>LOQ</b>	32 pg/mL	-	-
<b>Incubation time</b>	1h at room temperature		
<b>Conversion factor</b>	NIBSC (89/520) value (IU/mL) = 0,01 x HTRF hIL8 value (pg/mL)		

### Ordering information:

Product	Size	Part#
Human IL8 kit	1 x 96 tests	62HIL08PET
Human IL8 kit	500 tests	62HIL08PEG
Human IL8 kit	10,000 tests	62HIL08PEH



## TABLE OF CONTENTS

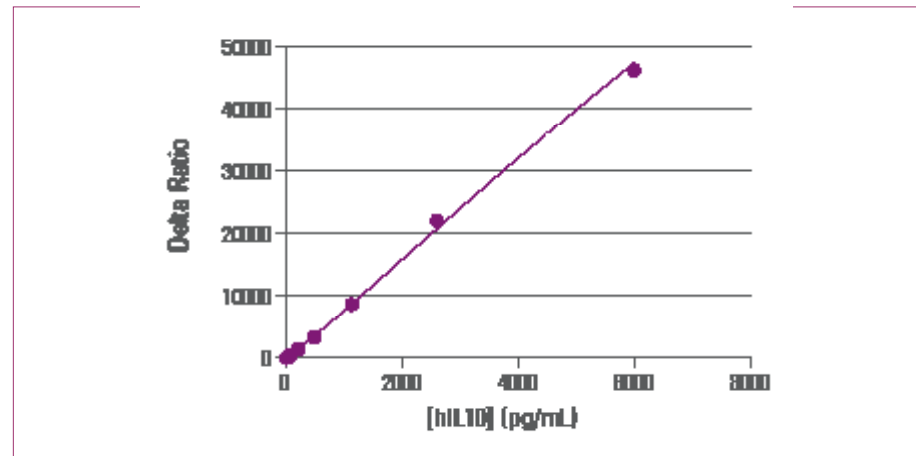
- A full range of cytokines
  - Rely on Validation
- 
- Human G-CSF kit
  - Human GM-CSF kit (CSF2)
  - Human IFN $\alpha$  kit
  - Human IFN $\beta$  kit
  - Mouse IFN $\beta$  kit
  - Human IFN $\gamma$  kit
  - Mouse IFN $\gamma$  kit
  - Human IL1 $\alpha$  kit
  - Mouse IL1 $\alpha$  kit
  - Human IL1 $\beta$  kit
  - Mouse IL1 $\beta$  kit
  - Human IL2 kit
  - Mouse IL2 kit
  - Human IL4 kit
  - Human IL5 kit
  - Human IL6 kit
  - Mouse IL6 kit
  - Human IL8 kit
  - Human IL10 kit
  - Human IL11 kit
  - Human IL12 kit
  - Human IL13 kit
  - Human IL17 kit
  - Mouse IL17 kit
  - Human IL18 kit
  - Human IL22 kit
  - Human IL23 kit
  - Human IL31 kit
  - Human & Mouse TGF $\beta$ 1 kit
  - Human TNF $\alpha$  kit
  - Mouse TNF $\alpha$  kit
  - Cynomolgus TNF $\alpha$  kit
  - Human CCL2 kit (MCP1)
  - Mouse CCL2 kit (MCP1)
  - Human CCL3 kit (MIP1 $\alpha$ )
  - Human CCL4 kit (MIP1 $\beta$ )
  - Human CCL5 kit (RANTES)
  - Human CCL20 kit
  - Human CXCL1 kit (GRO $\alpha$ )
  - Human CXCL10 kit (IP10)

# Human IL10 kit

	Diluent	DMEM	RPMI
<b>Assay range</b>	22 to 6,000 pg/mL		
<b>LOD</b>	7 pg/mL	13 pg/mL	8 pg/mL
<b>LOQ</b>	22 pg/mL	-	-
<b>Incubation time</b>	Overnight at room temperature		
<b>Conversion factor</b>	NIBSC (93/722) value (IU/mL) = 0,005 x HTRF hIL10 value (pg/mL)		

**Ordering information:**

Product	Size	Part#
Human IL10 kit	500 tests	62HIL10PEG
Human IL10 kit	10,000 tests	62HIL10PEH

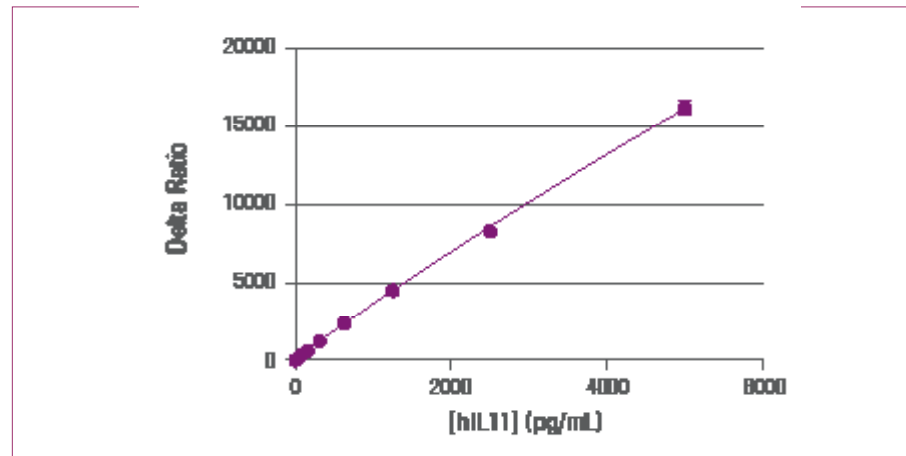


# Human IL11 kit

	Diluent	DMEM	RPMI
<b>Assay range</b>	31 – 5,000 pg/ml		
<b>LOD</b>	21 pg/mL	95 pg/mL	56 pg/mL
<b>LOQ</b>	31 pg/mL	-	-
<b>Incubation time</b>	Overnight at RT		
<b>Conversion factor</b>	NIBSC (92/788) value (IU/ml) = 0.0093 x HTRF hIL11 value (pg/mL)		

**Ordering information:**

Product	Size	Part#
Human IL-11 kit	500 tests	62HIL11PEG
Human IL-11 kit	10,000 tests	62HIL11PEH



## TABLE OF CONTENTS

- A full range of cytokines
  - Rely on Validation
- 
- Human G-CSF kit
  - Human GM-CSF kit (CSF2)
  - Human IFN $\alpha$  kit
  - Human IFN $\beta$  kit
  - Mouse IFN $\beta$  kit
  - Human IFN $\gamma$  kit
  - Mouse IFN $\gamma$  kit
  - Human IL1 $\alpha$  kit
  - Mouse IL1 $\alpha$  kit
  - Human IL1 $\beta$  kit
  - Mouse IL1 $\beta$  kit
  - Human IL2 kit
  - Mouse IL2 kit
  - Human IL4 kit
  - Human IL5 kit
  - Human IL6 kit
  - Mouse IL6 kit
  - Human IL8 kit
  - Human IL10 kit
  - Human IL11 kit
  - Human IL12 kit
  - Human IL13 kit
  - Human IL17 kit
  - Mouse IL17 kit
  - Human IL18 kit
  - Human IL22 kit
  - Human IL23 kit
  - Human IL31 kit
  - Human & Mouse TGF $\beta$ 1 kit
  - Human TNF $\alpha$  kit
  - Mouse TNF $\alpha$  kit
  - Cynomolgus TNF $\alpha$  kit
  - Human CCL2 kit (MCP1)
  - Mouse CCL2 kit (MCP1)
  - Human CCL3 kit (MIP1 $\alpha$ )
  - Human CCL4 kit (MIP1 $\beta$ )
  - Human CCL5 kit (RANTES)
  - Human CCL20 kit
  - Human CXCL1 kit (GRO $\alpha$ )
  - Human CXCL10 kit (IP10)

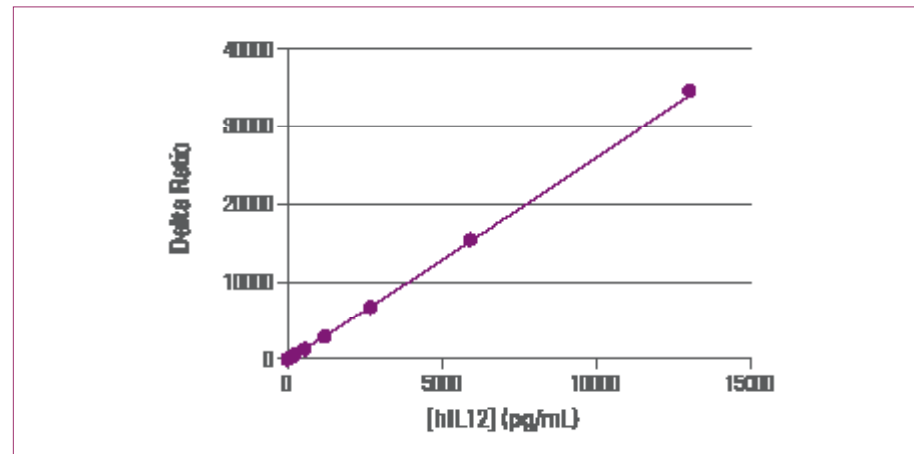


# Human IL12 kit

	Diluent	DMEM	RPMI
<b>Assay range</b>	81 to 13,000 pg/mL		
<b>LOD</b>	14 pg/mL	61 pg/mL	34 pg/mL
<b>LOQ</b>	81 pg/mL	-	-
<b>Incubation time</b>	2h at room temperature		
<b>Conversion factor</b>	NIBSC (95/544) value (IU/mL) = 0,01 x HTRF hIL12 value (pg/mL)		

### Ordering information:

Product	Size	Part#
Human IL12 kit	500 tests	62HIL12PEG
Human IL12 kit	10,000 tests	62HIL12PEH

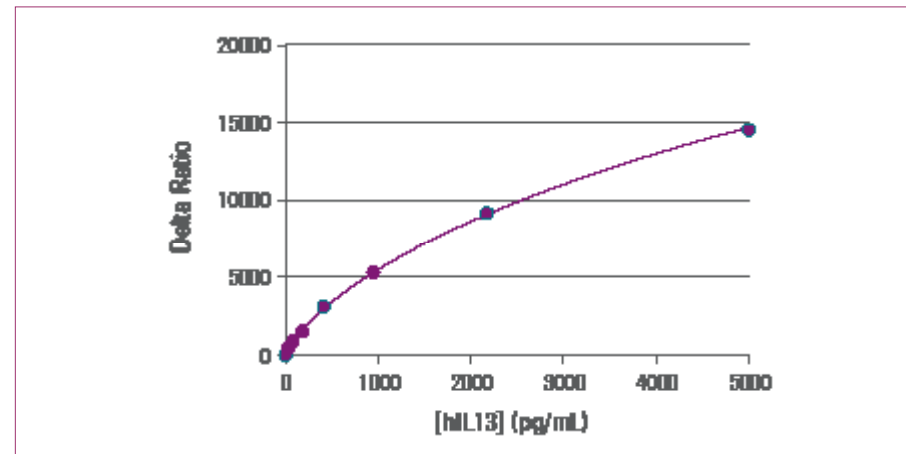


# Human IL13 kit

	Diluent	DMEM	RPMI
<b>Assay range</b>	17 to 5,000 pg/mL		
<b>LOD</b>	6 pg/mL	19 pg/mL	23 pg/mL
<b>LOQ</b>	17 pg/mL	24 pg/mL	25 pg/mL
<b>Incubation time</b>	Overnight at room temperature		
<b>Conversion factor</b>	NIBSC (94/622) value (IU/mL) = 1.2.10 <sup>-3</sup> x HTRF hIL13 value (pg/mL)		

### Ordering information:

Product	Size	Part#
Human IL13 kit	500 tests	62HIL13PEG
Human IL13 kit	10,000 tests	62HIL13PEH



## TABLE OF CONTENTS

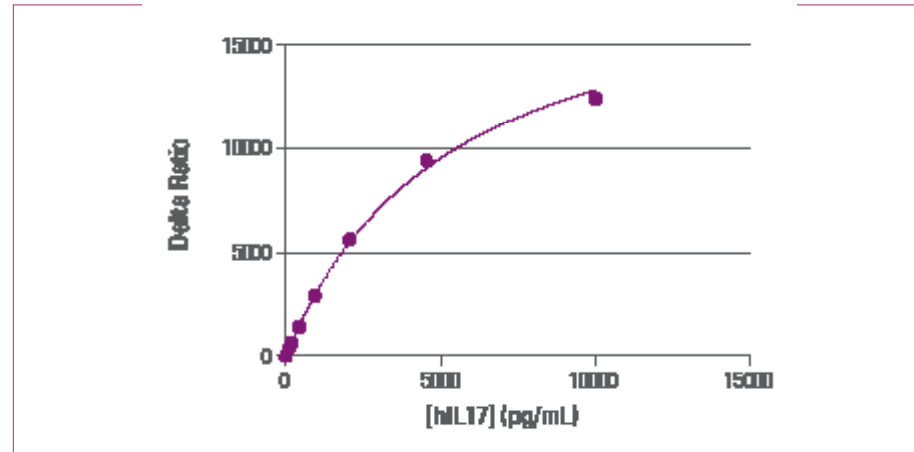
- A full range of cytokines
  - Rely on Validation
- 
- Human G-CSF kit
  - Human GM-CSF kit (CSF2)
  - Human IFN $\alpha$  kit
  - Human IFN $\beta$  kit
  - Mouse IFN $\beta$  kit
  - Human IFN $\gamma$  kit
  - Mouse IFN $\gamma$  kit
  - Human IL1 $\alpha$  kit
  - Mouse IL1 $\alpha$  kit
  - Human IL1 $\beta$  kit
  - Mouse IL1 $\beta$  kit
  - Human IL2 kit
  - Mouse IL2 kit
  - Human IL4 kit
  - Human IL5 kit
  - Human IL6 kit
  - Mouse IL6 kit
  - Human IL8 kit
  - Human IL10 kit
  - Human IL11 kit
  - Human IL12 kit
  - Human IL13 kit
  - Human IL17 kit
  - Mouse IL17 kit
  - Human IL18 kit
  - Human IL22 kit
  - Human IL23 kit
  - Human IL31 kit
  - Human & Mouse TGF $\beta$ 1 kit
  - Human TNF $\alpha$  kit
  - Mouse TNF $\alpha$  kit
  - Cynomolgus TNF $\alpha$  kit
  - Human CCL2 kit (MCP1)
  - Mouse CCL2 kit (MCP1)
  - Human CCL3 kit (MIP1 $\alpha$ )
  - Human CCL4 kit (MIP1 $\beta$ )
  - Human CCL5 kit (RANTES)
  - Human CCL20 kit
  - Human CXCL1 kit (GRO $\alpha$ )
  - Human CXCL10 kit (IP10)

# Human IL17 kit

	Diluent	DMEM	RPMI
<b>Assay range</b>	33 to 10,000 pg/mL		
<b>LOD</b>	7 pg/mL	22 pg/mL	22 pg/mL
<b>LOQ</b>	33 pg/mL	-	-
<b>Incubation time</b>	Overnight at room temperature		
<b>Conversion factor</b>	NIBSC (01/420) value (IU/mL) = 0,02 x HTRF hIL17 value (pg/mL)		

### Ordering information:

Product	Size	Part#
Human IL17 kit	1 x 96 tests	62HIL17PET
Human IL17 kit	500 tests	62HIL17PEG
Human IL17 kit	10,000 tests	62HIL17PEH

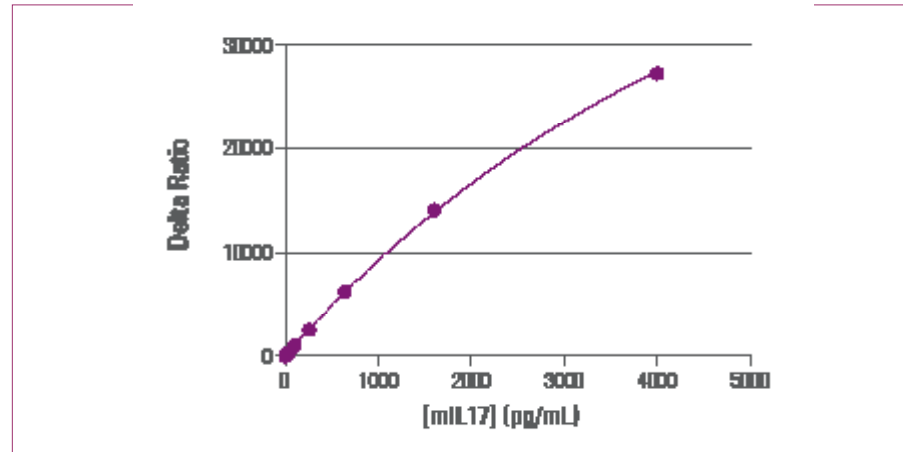


# Mouse IL17 kit

	Diluent	DMEM	RPMI
<b>Assay range</b>	16 to 4,000 pg/mL		
<b>LOD</b>	4 pg/mL	9 pg/mL	6 pg/mL
<b>LOQ</b>	16 pg/mL	-	-
<b>Incubation time</b>	1h at room temperature		

### Ordering information:

Product	Size	Part#
Mouse IL17 kit	500 tests	62MIL17PEG
Mouse IL17 kit	10,000 tests	62MIL17PEH



## TABLE OF CONTENTS

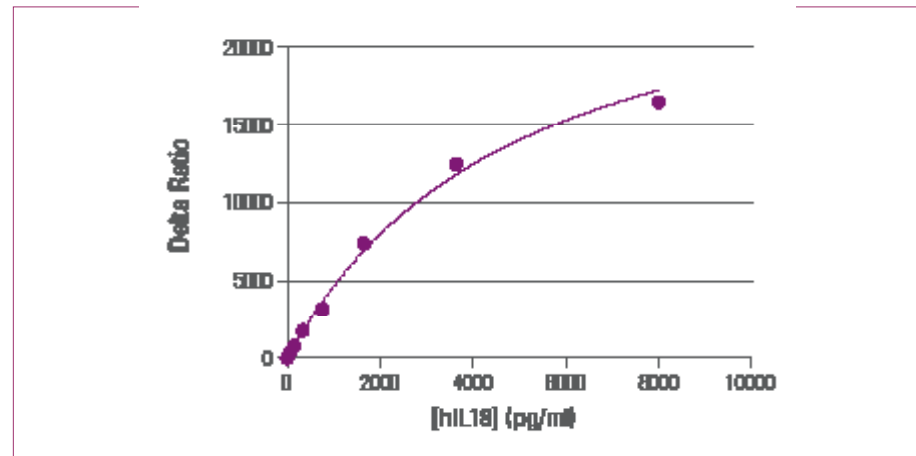
- A full range of cytokines
  - Rely on Validation
- 
- Human G-CSF kit
  - Human GM-CSF kit (CSF2)
  - Human IFN $\alpha$  kit
  - Human IFN $\beta$  kit
  - Mouse IFN $\beta$  kit
  - Human IFN $\gamma$  kit
  - Mouse IFN $\gamma$  kit
  - Human IL1 $\alpha$  kit
  - Mouse IL1 $\alpha$  kit
  - Human IL1 $\beta$  kit
  - Mouse IL1 $\beta$  kit
  - Human IL2 kit
  - Mouse IL2 kit
  - Human IL4 kit
  - Human IL5 kit
  - Human IL6 kit
  - Mouse IL6 kit
  - Human IL8 kit
  - Human IL10 kit
  - Human IL11 kit
  - Human IL12 kit
  - Human IL13 kit
  - Human IL17 kit
  - Mouse IL17 kit
  - Human IL18 kit
  - Human IL22 kit
  - Human IL23 kit
  - Human IL31 kit
  - Human & Mouse TGF $\beta$ 1 kit
  - Human TNF $\alpha$  kit
  - Mouse TNF $\alpha$  kit
  - Cynomolgus TNF $\alpha$  kit
  - Human CCL2 kit (MCP1)
  - Mouse CCL2 kit (MCP1)
  - Human CCL3 kit (MIP1 $\alpha$ )
  - Human CCL4 kit (MIP1 $\beta$ )
  - Human CCL5 kit (RANTES)
  - Human CCL20 kit
  - Human CXCL1 kit (GRO $\alpha$ )
  - Human CXCL10 kit (IP10)

# Human IL18 kit

	Diluent	DMEM	RPMI
<b>Assay range</b>	43 to 8,000 pg/mL		
<b>LOD</b>	18 pg/mL	32 pg/mL	84 pg/mL
<b>LOQ</b>	43 pg/mL	-	-
<b>Incubation time</b>	1h at room temperature		
<b>Conversion factor</b>	NIBSC (03/200) value (IU/mL) = 5 x HTRF hIL18 value (pg/mL)		

**Ordering information:**

Product	Size	Part#
Human IL18 kit	500 tests	62HIL18PEG
Human IL18 kit	10,000 tests	62HIL18PEH

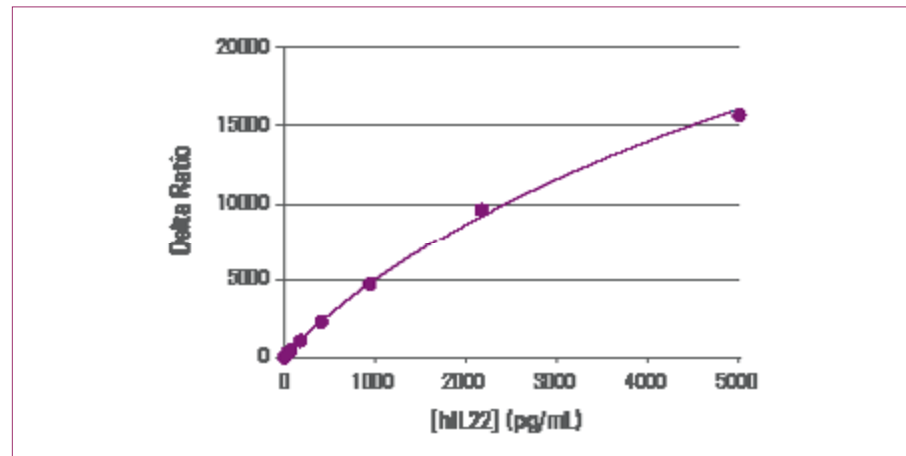


# Human IL22 kit

	Diluent	DMEM	RPMI
<b>Assay range</b>	26 to 5,000 pg/mL		
<b>LOD</b>	9 pg/mL	16 pg/mL	13 pg/mL
<b>LOQ</b>	26 pg/mL	35 pg/mL	28 pg/mL
<b>Incubation time</b>	Overnight at room temperature (reading possible from 3h)		
<b>Conversion factor</b>	No International standard available		

**Ordering information:**

Product	Size	Part#
Human IL22 kit	500 tests	62HIL22PEG
Human IL22 kit	10,000 tests	62HIL22PEH



## TABLE OF CONTENTS

- A full range of cytokines
  - Rely on Validation
- 
- Human G-CSF kit
  - Human GM-CSF kit (CSF2)
  - Human IFN $\alpha$  kit
  - Human IFN $\beta$  kit
  - Mouse IFN $\beta$  kit
  - Human IFN $\gamma$  kit
  - Mouse IFN $\gamma$  kit
  - Human IL1 $\alpha$  kit
  - Mouse IL1 $\alpha$  kit
  - Human IL1 $\beta$  kit
  - Mouse IL1 $\beta$  kit
  - Human IL2 kit
  - Mouse IL2 kit
  - Human IL4 kit
  - Human IL5 kit
  - Human IL6 kit
  - Mouse IL6 kit
  - Human IL8 kit
  - Human IL10 kit
  - Human IL11 kit
  - Human IL12 kit
  - Human IL13 kit
  - Human IL17 kit
  - Mouse IL17 kit
  - Human IL18 kit
  - Human IL22 kit
  - Human IL23 kit
  - Human IL31 kit
  - Human & Mouse TGF $\beta$ 1 kit
  - Human TNF $\alpha$  kit
  - Mouse TNF $\alpha$  kit
  - Cynomolgus TNF $\alpha$  kit
  - Human CCL2 kit (MCP1)
  - Mouse CCL2 kit (MCP1)
  - Human CCL3 kit (MIP1 $\alpha$ )
  - Human CCL4 kit (MIP1 $\beta$ )
  - Human CCL5 kit (RANTES)
  - Human CCL20 kit
  - Human CXCL1 kit (GRO $\alpha$ )
  - Human CXCL10 kit (IP10)



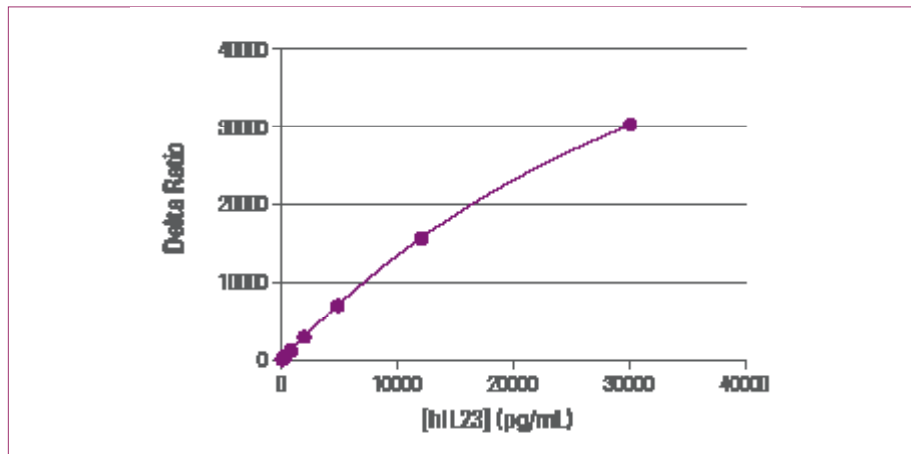


# Human IL23 kit

	Diluent	DMEM	RPMI
<b>Assay range</b>	92 to 30,000 pg/mL		
<b>LOD</b>	30 pg/mL	46 pg/mL	40 pg/mL
<b>LOQ</b>	92 pg/mL	-	-
<b>Incubation time</b>	3h at 4°C		

### Ordering information:

Product	Size	Part#
Human IL23 kit	500 tests	62HIL23PEG
Human IL23 kit	10,000 tests	62HIL23PEH

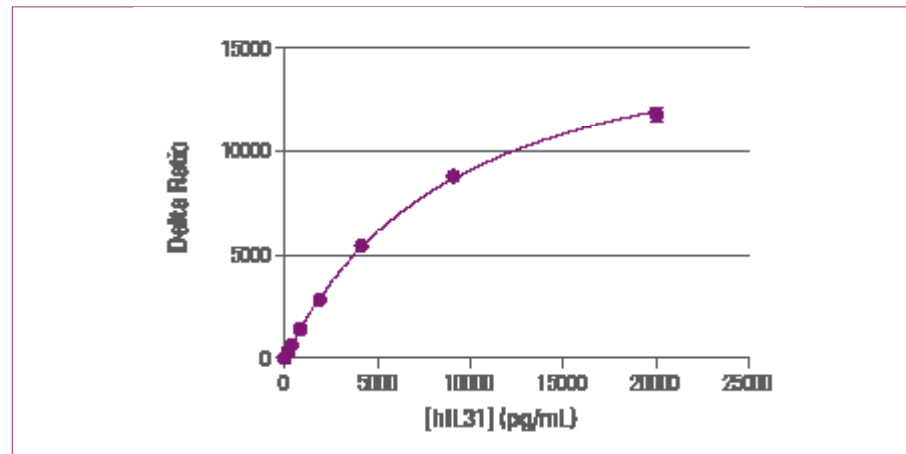


# Human IL31 kit

	Diluent	DMEM	RPMI
<b>Assay range</b>	87 to 20,000 pg/mL		
<b>LOD</b>	18 pg/mL	50 pg/mL	36 pg/mL
<b>LOQ</b>	87 pg/mL	-	-
<b>Incubation time</b>	Overnight at room temperature		

### Ordering information:

Product	Size	Part#
Human IL31 kit	500 tests	62HIL31PEG
Human IL31 kit	10,000 tests	62HIL31PEH



## TABLE OF CONTENTS

- A full range of cytokines
  - Rely on Validation
- 
- Human G-CSF kit
  - Human GM-CSF kit (CSF2)
  - Human IFN $\alpha$  kit
  - Human IFN $\beta$  kit
  - Mouse IFN $\beta$  kit
  - Human IFN $\gamma$  kit
  - Mouse IFN $\gamma$  kit
  - Human IL1 $\alpha$  kit
  - Mouse IL1 $\alpha$  kit
  - Human IL1 $\beta$  kit
  - Mouse IL1 $\beta$  kit
  - Human IL2 kit
  - Mouse IL2 kit
  - Human IL4 kit
  - Human IL5 kit
  - Human IL6 kit
  - Mouse IL6 kit
  - Human IL8 kit
  - Human IL10 kit
  - Human IL11 kit
  - Human IL12 kit
  - Human IL13 kit
  - Human IL17 kit
  - Mouse IL17 kit
  - Human IL18 kit
  - Human IL22 kit
  - Human IL23 kit
  - Human IL31 kit
  - Human & Mouse TGF $\beta$ 1 kit
  - Human TNF $\alpha$  kit
  - Mouse TNF $\alpha$  kit
  - Cynomolgus TNF $\alpha$  kit
  - Human CCL2 kit (MCP1)
  - Mouse CCL2 kit (MCP1)
  - Human CCL3 kit (MIP1 $\alpha$ )
  - Human CCL4 kit (MIP1 $\beta$ )
  - Human CCL5 kit (RANTES)
  - Human CCL20 kit
  - Human CXCL1 kit (GRO $\alpha$ )
  - Human CXCL10 kit (IP10)

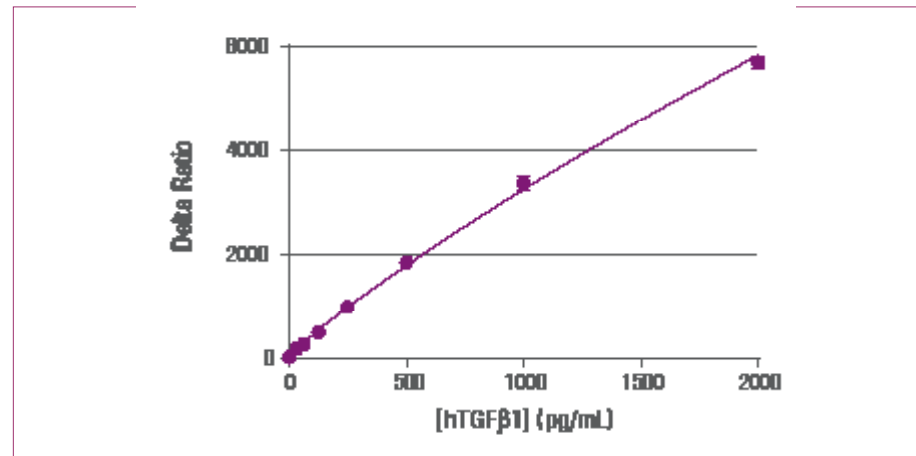


# Human & Mouse TGFβ1 kit

	Diluent	DMEM + 4% FCS	RPMI + 4% FCS
<b>Assay range</b>	19 to 2,000 pg/mL		
<b>LOD</b>	4 pg/mL	13 pg/mL	6 pg/mL
<b>LOQ</b>	19 pg/mL	26 pg/mL	28 pg/mL
<b>Incubation time</b>	Overnight at room temperature		
<b>Conversion factor</b>	NIBSC (89/514) value (U/mL) = 0,017 x HTRF hTGFβ1 value (pg/mL)		

**Ordering information:**

Product	Size	Part#
TGFb1 kit	500 tests	62HTGFBPEG
TGFb1 kit	10,000 tests	62HTGFBPEH

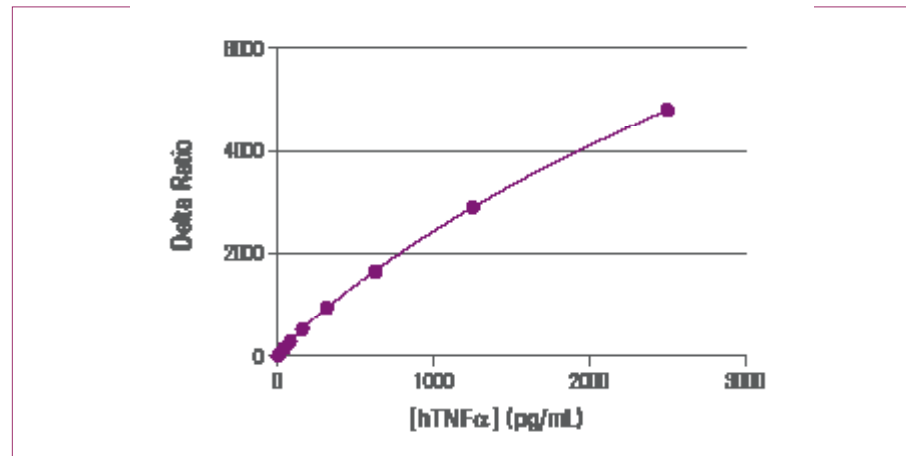


# Human TNFα kit

	Diluent	DMEM	RPMI
<b>Assay range</b>	29 to 2,500 pg/mL		
<b>LOD</b>	5 pg/mL	17 pg/mL	11 pg/mL
<b>LOQ</b>	29 pg/mL	-	-
<b>Incubation time</b>	2h at room temperature		
<b>Conversion factor</b>	NIBSC (12/154) value (IU/mL) = 0,1 x HTRF hTNFα value (pg/mL)		

**Ordering information:**

Product	Size	Part#
Human TNFα kit	1 x 96 tests	62HTNFAPET
Human TNFα kit	500 tests	62HTNFAPEG
Human TNFα kit	10,000 tests	62HTNFAPEH



## TABLE OF CONTENTS

- A full range of cytokines
- Rely on Validation
- Human G-CSF kit
- Human GM-CSF kit (CSF2)
- Human IFNα kit
- Human IFNβ kit
- Mouse IFNβ kit
- Human IFNγ kit
- Mouse IFNγ kit
- Human IL1α kit
- Mouse IL1α kit
- Human IL1β kit
- Mouse IL1β kit
- Human IL2 kit
- Mouse IL2 kit
- Human IL4 kit
- Human IL5 kit
- Human IL6 kit
- Mouse IL6 kit
- Human IL8 kit
- Human IL10 kit
- Human IL11 kit
- Human IL12 kit
- Human IL13 kit
- Human IL17 kit
- Mouse IL17 kit
- Human IL18 kit
- Human IL22 kit
- Human IL23 kit
- Human IL31 kit
- Human & Mouse TGFβ1 kit
- Human TNFα kit
- Mouse TNFα kit
- Cynomolgus TNFα kit
- Human CCL2 kit (MCP1)
- Mouse CCL2 kit (MCP1)
- Human CCL3 kit (MIP1α)
- Human CCL4 kit (MIP1β)
- Human CCL5 kit (RANTES)
- Human CCL20 kit
- Human CXCL1 kit (GROα)
- Human CXCL10 kit (IP10)



# Mouse TNF $\alpha$ kit

	Diluent	DMEM	RPMI
<b>Assay range</b>	20 to 6,000 pg/mL		
<b>LOD</b>	3 pg/mL	11 pg/mL	8 pg/mL
<b>LOQ</b>	20 pg/mL	-	-
<b>Incubation time</b>	1h at room temperature		

# Cynomolgus TNF $\alpha$ kit

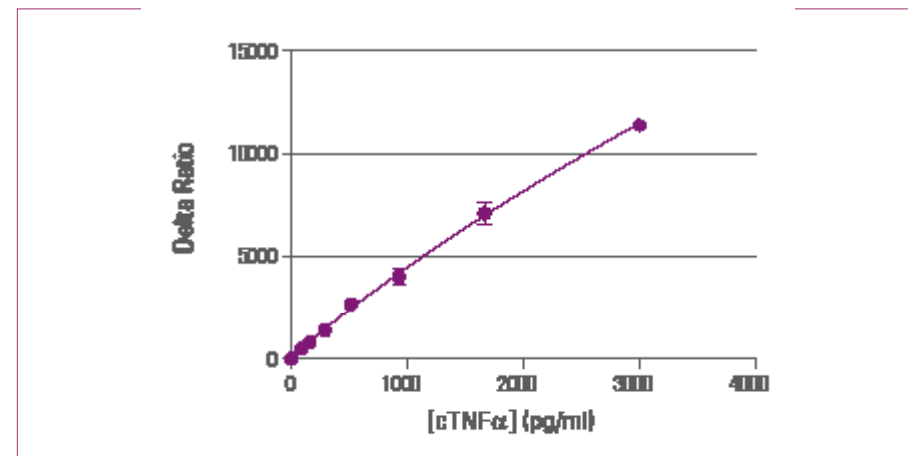
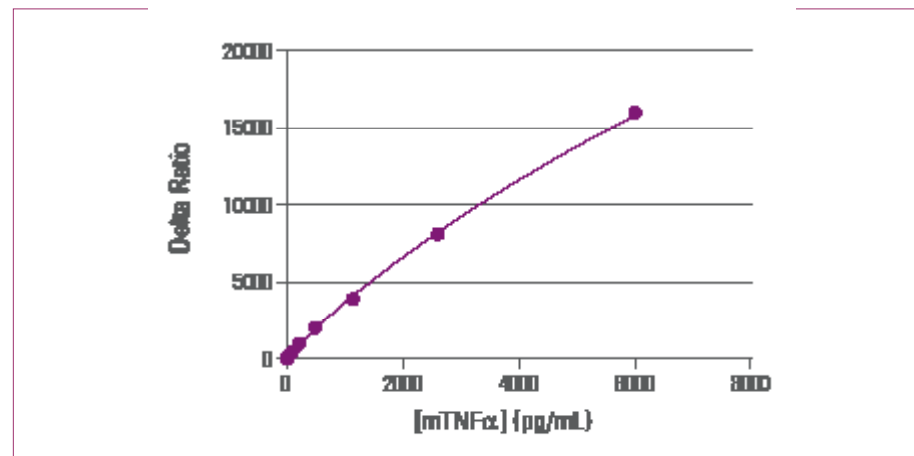
	Diluent	DMEM	RPMI
<b>Assay range</b>	27 to 3,000 pg/mL		
<b>LOD</b>	12 pg/mL	44 pg/mL	40 pg/mL
<b>LOQ</b>	27 pg/mL	-	-
<b>Incubation time</b>	Overnight at room temperature		

**Ordering information:**

Product	Size	Part#
Mouse TNF $\alpha$ kit	500 tests	62MTNFAPEG
Mouse TNF $\alpha$ kit	10,000 tests	62MTNFAPEH

**Ordering information:**

Product	Size	Part#
Cynomolgus TNF $\alpha$ kit	500 tests	62CTNFAPEG
Cynomolgus TNF $\alpha$ kit	10,000 tests	62CTNFAPEH



## TABLE OF CONTENTS

- A full range of cytokines
  - Rely on Validation
- 
- Human G-CSF kit
  - Human GM-CSF kit (CSF2)
  - Human IFN $\alpha$  kit
  - Human IFN $\beta$  kit
  - Mouse IFN $\beta$  kit
  - Human IFN $\gamma$  kit
  - Mouse IFN $\gamma$  kit
  - Human IL1 $\alpha$  kit
  - Mouse IL1 $\alpha$  kit
  - Human IL1 $\beta$  kit
  - Mouse IL1 $\beta$  kit
  - Human IL2 kit
  - Mouse IL2 kit
  - Human IL4 kit
  - Human IL5 kit
  - Human IL6 kit
  - Mouse IL6 kit
  - Human IL8 kit
  - Human IL10 kit
  - Human IL11 kit
  - Human IL12 kit
  - Human IL13 kit
  - Human IL17 kit
  - Mouse IL17 kit
  - Human IL18 kit
  - Human IL22 kit
  - Human IL23 kit
  - Human IL31 kit
  - Human & Mouse TGF $\beta$ 1 kit
  - Human TNF $\alpha$  kit
  - Mouse TNF $\alpha$  kit
  - Cynomolgus TNF $\alpha$  kit
  - Human CCL2 kit (MCP1)
  - Mouse CCL2 kit (MCP1)
  - Human CCL3 kit (MIP1 $\alpha$ )
  - Human CCL4 kit (MIP1 $\beta$ )
  - Human CCL5 kit (RANTES)
  - Human CCL20 kit
  - Human CXCL1 kit (GRO $\alpha$ )
  - Human CXCL10 kit (IP10)

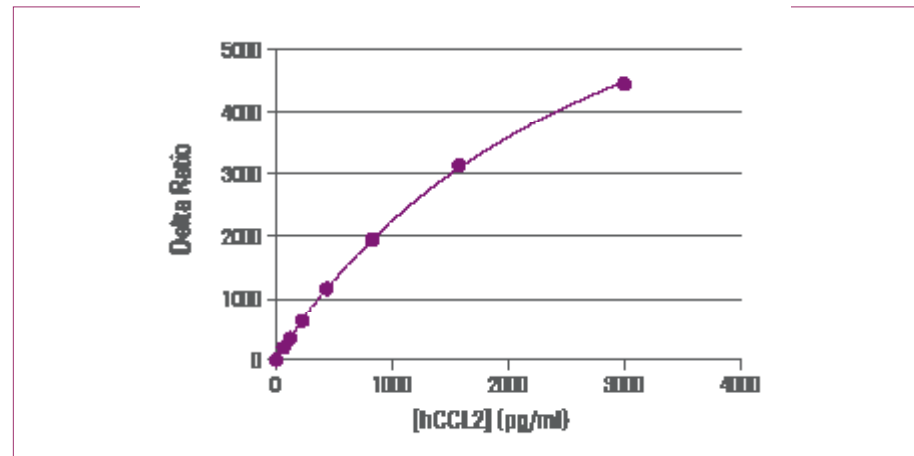


# Human CCL2 kit (MCP1)

	Diluent	DMEM	RPMI
<b>Assay range</b>	90 to 3,000 pg/mL		
<b>LOD</b>	20 pg/mL	28 pg/mL	20 pg/mL
<b>LOQ</b>	90 pg/mL	-	-
<b>Incubation time</b>	Overnight at room temperature		
<b>Conversion factor</b>	NIBSC (92/794) value (IU/mL) = 0,9 x HTRF hCCL2 value (pg/mL)		

**Ordering information:**

Product	Size	Part#
Human CCL2 kit (MCP1)	500 tests	62HCCL2PEG
Human CCL2 kit (MCP1)	10,000 tests	62HCCL2PEH

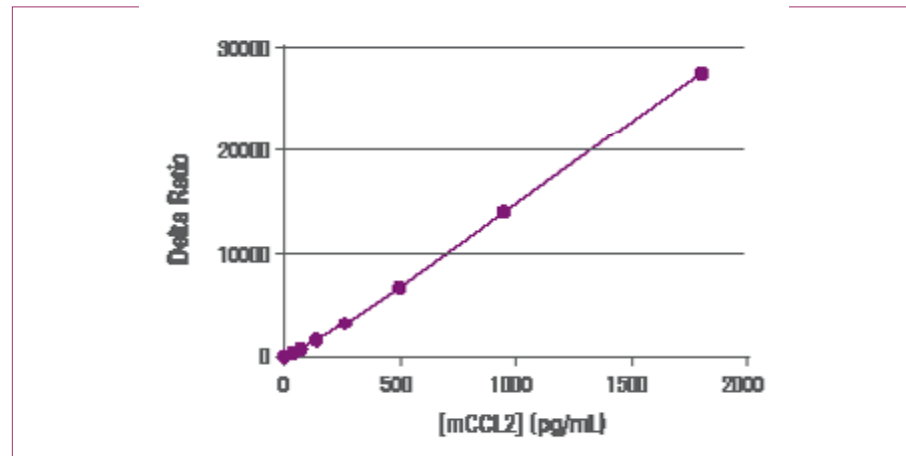


# Mouse CCL2 kit (MCP1)

	Diluent	DMEM	RPMI
<b>Assay range</b>	13 to 1,800 pg/mL		
<b>LOD</b>	6 pg/mL	18 pg/mL	17 pg/mL
<b>LOQ</b>	13 pg/mL	-	-
<b>Incubation time</b>	Overnight at room temperature		

**Ordering information:**

Product	Size	Part#
Mouse CCL2 kit	500 tests	62MCCL2PEG
Mouse CCL2 kit	10,000 tests	62MCCL2PEH



## TABLE OF CONTENTS

- A full range of cytokines
  - Rely on Validation
- 
- Human G-CSF kit
  - Human GM-CSF kit (CSF2)
  - Human IFN $\alpha$  kit
  - Human IFN $\beta$  kit
  - Mouse IFN $\beta$  kit
  - Human IFN $\gamma$  kit
  - Mouse IFN $\gamma$  kit
  - Human IL1 $\alpha$  kit
  - Mouse IL1 $\alpha$  kit
  - Human IL1 $\beta$  kit
  - Mouse IL1 $\beta$  kit
  - Human IL2 kit
  - Mouse IL2 kit
  - Human IL4 kit
  - Human IL5 kit
  - Human IL6 kit
  - Mouse IL6 kit
  - Human IL8 kit
  - Human IL10 kit
  - Human IL11 kit
  - Human IL12 kit
  - Human IL13 kit
  - Human IL17 kit
  - Mouse IL17 kit
  - Human IL18 kit
  - Human IL22 kit
  - Human IL23 kit
  - Human IL31 kit
  - Human & Mouse TGF $\beta$ 1 kit
  - Human TNF $\alpha$  kit
  - Mouse TNF $\alpha$  kit
  - Cynomolgus TNF $\alpha$  kit
  - Human CCL2 kit (MCP1)
  - Mouse CCL2 kit (MCP1)
  - Human CCL3 kit (MIP1 $\alpha$ )
  - Human CCL4 kit (MIP1 $\beta$ )
  - Human CCL5 kit (RANTES)
  - Human CCL20 kit
  - Human CXCL1 kit (GRO $\alpha$ )
  - Human CXCL10 kit (IP10)

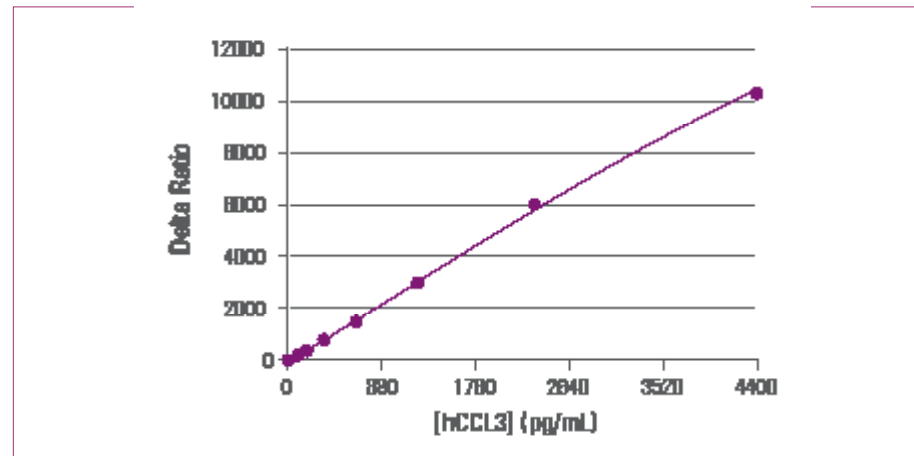


# Human CCL3 kit (MIP1 $\alpha$ )

	Diluent	DMEM	RPMI
<b>Assay range</b>	58 to 4,400 pg/mL		
<b>LOD</b>	28 pg/mL	35 pg/mL	25 pg/mL
<b>LOQ</b>	58 pg/mL	52 pg/mL	56 pg/mL
<b>Incubation time</b>	Overnight at room temperature		
<b>Conversion factor</b>	NIBSC (92/518) value (IU/mL) = 0,00005 x HTRF hCCL3 value (pg/mL)		

**Ordering information:**

Product	Size	Part#
Human CCL3 kit	500 tests	62HCCL3PEG
Human CCL3 kit	10,000 tests	62HCCL3PEH

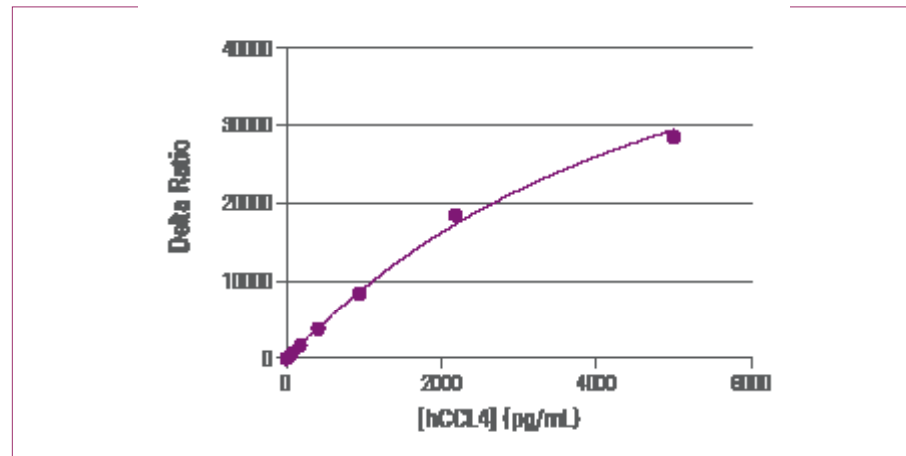


# Human CCL4 kit (MIP1 $\beta$ )

	Diluent	DMEM	RPMI
<b>Assay range</b>	20 to 5,000 pg/mL		
<b>LOD</b>	7 pg/mL	9 pg/mL	10 pg/mL
<b>LOQ</b>	20 pg/mL	-	-
<b>Incubation time</b>	1h at room temperature		

**Ordering information:**

Product	Size	Part#
Human CCL4 kit (MIP1 $\beta$ )	500 tests	62HCCL4PEG
Human CCL4 kit (MIP1 $\beta$ )	10,000 tests	62HCCL4PEH



## TABLE OF CONTENTS

- A full range of cytokines
- Rely on Validation
- Human G-CSF kit
- Human GM-CSF kit (CSF2)
- Human IFN $\alpha$  kit
- Human IFN $\beta$  kit
- Mouse IFN $\beta$  kit
- Human IFN $\gamma$  kit
- Mouse IFN $\gamma$  kit
- Human IL1 $\alpha$  kit
- Mouse IL1 $\alpha$  kit
- Human IL1 $\beta$  kit
- Mouse IL1 $\beta$  kit
- Human IL2 kit
- Mouse IL2 kit
- Human IL4 kit
- Human IL5 kit
- Human IL6 kit
- Mouse IL6 kit
- Human IL8 kit
- Human IL10 kit
- Human IL11 kit
- Human IL12 kit
- Human IL13 kit
- Human IL17 kit
- Mouse IL17 kit
- Human IL18 kit
- Human IL22 kit
- Human IL23 kit
- Human IL31 kit
- Human & Mouse TGF $\beta$ 1 kit
- Human TNF $\alpha$  kit
- Mouse TNF $\alpha$  kit
- Cynomolgus TNF $\alpha$  kit
- Human CCL2 kit (MCP1)
- Mouse CCL2 kit (MCP1)
- Human CCL3 kit (MIP1 $\alpha$ )
- Human CCL4 kit (MIP1 $\beta$ )
- Human CCL5 kit (RANTES)
- Human CCL20 kit
- Human CXCL1 kit (GRO $\alpha$ )
- Human CXCL10 kit (IP10)

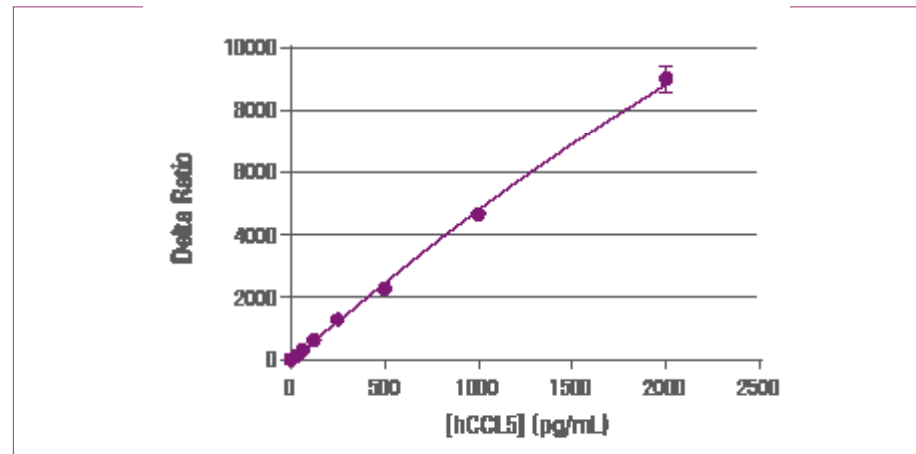


# Human CCL5 kit (RANTES)

	Diluent	DMEM	RPMI
<b>Assay range</b>	18 to 2,000 pg/mL		
<b>LOD</b>	7 pg/mL	12 pg/mL	9 pg/mL
<b>LOQ</b>	18 pg/mL	-	-
<b>Incubation time</b>	Overnight at room temperature		
<b>Conversion factor</b>	NIBSC (92/520) value (IU/mL) = 0,015 x HTRF hCCL5 value (pg/mL)		

**Ordering information:**

Product	Size	Part#
Human CCL5 kit	500 tests	62HCCL5PEG
Human CCL5 kit	10,000 tests	62HCCL5PEH

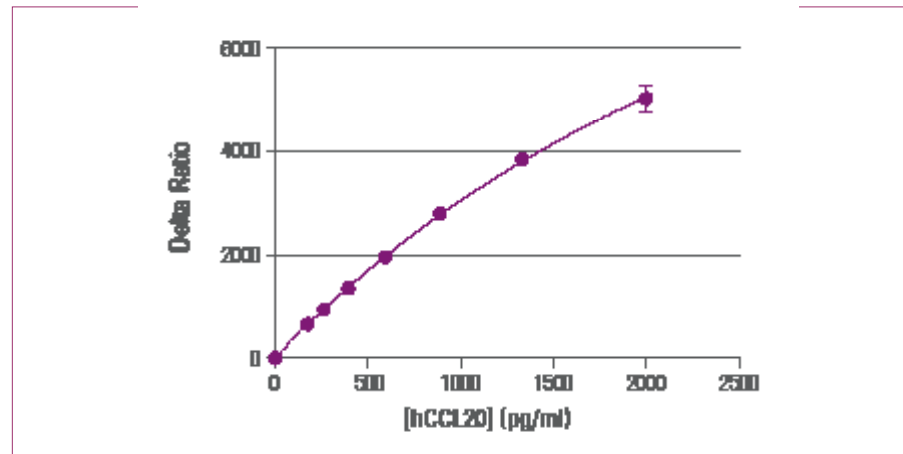


# Human CCL20 kit

	Diluent	DMEM	RPMI
<b>Assay range</b>	47 to 2,000 pg/mL		
<b>LOD</b>	15 pg/mL	82 pg/mL	34 pg/mL
<b>LOQ</b>	47 pg/mL	-	-
<b>Incubation time</b>	Overnight at room temperature		

**Ordering information:**

Product	Size	Part#
Human CCL20 kit	500 tests	62HCC20PEG
Human CCL20 kit	10,000 tests	62HCC20PEH



## TABLE OF CONTENTS

- A full range of cytokines
  - Rely on Validation
- 
- Human G-CSF kit
  - Human GM-CSF kit (CSF2)
  - Human IFN $\alpha$  kit
  - Human IFN $\beta$  kit
  - Mouse IFN $\beta$  kit
  - Human IFN $\gamma$  kit
  - Mouse IFN $\gamma$  kit
  - Human IL1 $\alpha$  kit
  - Mouse IL1 $\alpha$  kit
  - Human IL1 $\beta$  kit
  - Mouse IL1 $\beta$  kit
  - Human IL2 kit
  - Mouse IL2 kit
  - Human IL4 kit
  - Human IL5 kit
  - Human IL6 kit
  - Mouse IL6 kit
  - Human IL8 kit
  - Human IL10 kit
  - Human IL11 kit
  - Human IL12 kit
  - Human IL13 kit
  - Human IL17 kit
  - Mouse IL17 kit
  - Human IL18 kit
  - Human IL22 kit
  - Human IL23 kit
  - Human IL31 kit
  - Human & Mouse TGF $\beta$ 1 kit
  - Human TNF $\alpha$  kit
  - Mouse TNF $\alpha$  kit
  - Cynomolgus TNF $\alpha$  kit
  - Human CCL2 kit (MCP1)
  - Mouse CCL2 kit (MCP1)
  - Human CCL3 kit (MIP1 $\alpha$ )
  - Human CCL4 kit (MIP1 $\beta$ )
  - Human CCL5 kit (RANTES)
  - Human CCL20 kit
  - Human CXCL1 kit (GRO $\alpha$ )
  - Human CXCL10 kit (IP10)



## Human CXCL1 kit (GRO $\alpha$ )

	Diluent	DMEM	RPMI
<b>Assay range</b>	36 to 4,000 pg/mL		
<b>LOD</b>	13 pg/mL	33 pg/mL	40 pg/mL
<b>LOQ</b>	36 pg/mL	-	-
<b>Incubation time</b>	2h at 4°C		

## Human CXCL10 kit (IP10)

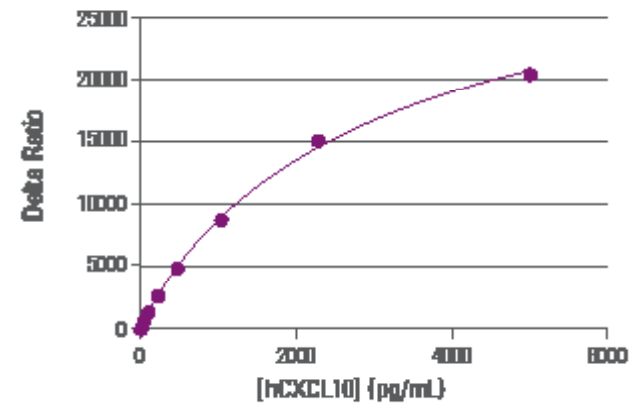
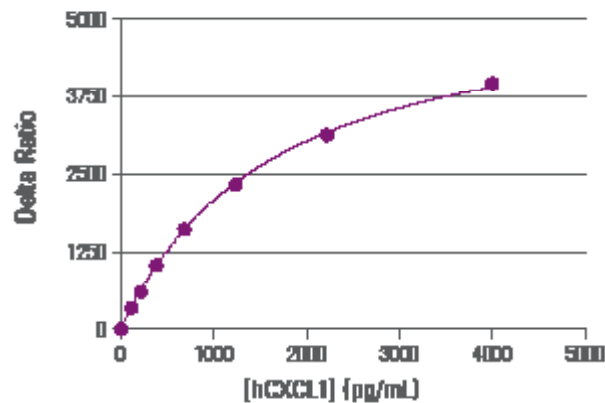
	Diluent	DMEM	RPMI
<b>Assay range</b>	26 to 5,000 pg/mL		
<b>LOD</b>	1.8 pg/mL	3.8 pg/mL	4.2 pg/mL
<b>LOQ</b>	7 pg/mL	-	-
<b>Incubation time</b>	2h at room temperature		

### Ordering information:

Product	Size	Part#
Human CXCL1 kit (GRO $\alpha$ )	500 tests	62HCXC1PEG
Human CXCL1 kit (GRO $\alpha$ )	10,000 tests	62HCXC1PEH

### Ordering information:

Product	Size	Part#
Human CXCL10 kit (IP10)	500 tests	62HCX10PEG
Human CXCL10 kit (IP10)	10,000 tests	62HCX10PEH



## TABLE OF CONTENTS

- A full range of cytokines
- Rely on Validation

- Human G-CSF kit
- Human GM-CSF kit (CSF2)
- Human IFN $\alpha$  kit
- Human IFN $\beta$  kit
- Mouse IFN $\beta$  kit
- Human IFN $\gamma$  kit
- Mouse IFN $\gamma$  kit
- Human IL1 $\alpha$  kit
- Mouse IL1 $\alpha$  kit
- Human IL1 $\beta$  kit
- Mouse IL1 $\beta$  kit
- Human IL2 kit
- Mouse IL2 kit
- Human IL4 kit
- Human IL5 kit
- Human IL6 kit
- Mouse IL6 kit
- Human IL8 kit
- Human IL10 kit
- Human IL11 kit
- Human IL12 kit
- Human IL13 kit
- Human IL17 kit
- Mouse IL17 kit
- Human IL18 kit
- Human IL22 kit
- Human IL23 kit
- Human IL31 kit
- Human & Mouse TGF $\beta$ 1 kit
- Human TNF $\alpha$  kit
- Mouse TNF $\alpha$  kit
- Cynomolgus TNF $\alpha$  kit
- Human CCL2 kit (MCP1)
- Mouse CCL2 kit (MCP1)
- Human CCL3 kit (MIP1 $\alpha$ )
- Human CCL4 kit (MIP1 $\beta$ )
- Human CCL5 kit (RANTES)
- Human CCL20 kit
- Human CXCL1 kit (GRO $\alpha$ )
- Human CXCL10 kit (IP10)



## Available Assays Listed by Species

Human G-CSF kit	Human IL13 kit	Mouse IFN $\beta$ kit
Human GM-CSF kit (CSF2)	Human IL17 kit	Mouse IFN $\gamma$ kit
Human IFN $\alpha$ kit	Human IL18 kit	Mouse IL1a kit
Human IFN $\beta$ kit	Human IL22 kit	Mouse IL1b kit
Human IFN $\gamma$ kit	Human IL23 kit	Mouse IL2 kit
Human IL1 $\alpha$ kit	Human IL31 kit	Mouse IL6 kit
Human IL1 $\beta$ kit	Human & Mouse TGF $\beta$ 1 kit	Mouse IL17 kit
Human IL2 kit	Human TNF $\alpha$ kit	Human & Mouse TGF $\beta$ 1 kit
Human IL4 kit	Human CCL2 kit (MCP1)	Mouse TNF $\alpha$ kit
Human IL5 kit	Human CCL3 kit (MIP1 $\alpha$ )	Mouse CCL2 kit (MCP1)
Human IL6 kit	Human CCL4 kit (MIP1 $\beta$ )	Cynomolgus TNF $\alpha$ kit
Human IL8 kit	Human CCL5 kit (RANTES)	
Human IL10 kit	Human CCL20 kit	
Human IL11 kit	Human CXCL1 kit (GRO $\alpha$ )	
Human IL12 kit	Human CXCL10 kit (IP10)	

## TABLE OF CONTENTS

- A full range of cytokines
  - Rely on Validation
- 
- Human G-CSF kit
  - Human GM-CSF kit (CSF2)
  - Human IFN $\alpha$  kit
  - Human IFN $\beta$  kit
  - Mouse IFN $\beta$  kit
  - Human IFN $\gamma$  kit
  - Mouse IFN $\gamma$  kit
  - Human IL1 $\alpha$  kit
  - Mouse IL1 $\alpha$  kit
  - Human IL1 $\beta$  kit
  - Mouse IL1 $\beta$  kit
  - Human IL2 kit
  - Mouse IL2 kit
  - Human IL4 kit
  - Human IL5 kit
  - Human IL6 kit
  - Mouse IL6 kit
  - Human IL8 kit
  - Human IL10 kit
  - Human IL11 kit
  - Human IL12 kit
  - Human IL13 kit
  - Human IL17 kit
  - Mouse IL17 kit
  - Human IL18 kit
  - Human IL22 kit
  - Human IL23 kit
  - Human IL31 kit
  - Human & Mouse TGF $\beta$ 1 kit
  - Human TNF $\alpha$  kit
  - Mouse TNF $\alpha$  kit
  - Cynomolgus TNF $\alpha$  kit
  - Human CCL2 kit (MCP1)
  - Mouse CCL2 kit (MCP1)
  - Human CCL3 kit (MIP1 $\alpha$ )
  - Human CCL4 kit (MIP1 $\beta$ )
  - Human CCL5 kit (RANTES)
  - Human CCL20 kit
  - Human CXCL1 kit (GRO $\alpha$ )
  - Human CXCL10 kit (IP10)





[www.revivity.com](http://www.revivity.com)

revivity

**Revvity, Inc**  
940 Winter Street, Waltham, MA 02451 USA  
(800) 762-4000 | [www.revivity.com](http://www.revivity.com)

For a complete listing of our global offices, visit [www.revivity.com](http://www.revivity.com)  
Copyright ©2023, Revvity, Inc. All rights reserved.

1131410