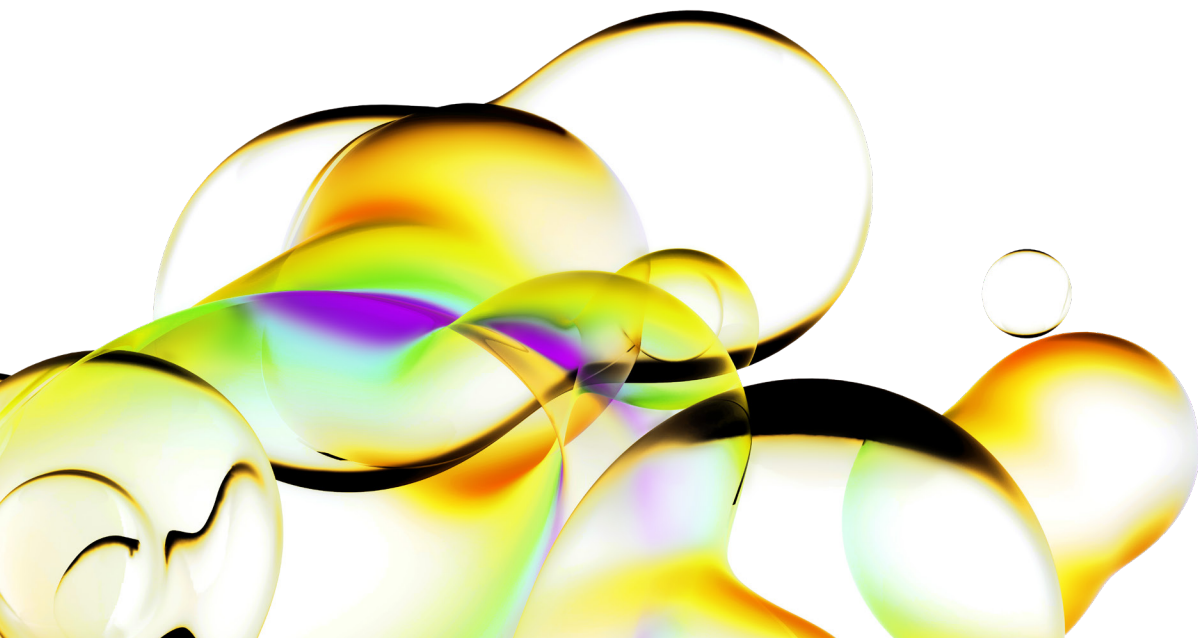




# The power of Western Lightning™ ONE.



## One-reagent substrates for Western blotting

Get the consistency you demand from your western blot experiments with pre-mixed, one-reagent horseradish peroxidase (HRP) chemiluminescent substrates.

Our Western Lightning ONE pre-mixed substrates provide sensitivity from picogram to low femtogram, for the flexibility to detect a broad range of protein levels.

Use our Western Lightning ONE reagents to validate CRISPR experiments, *in vivo* imaging studies, and more.

## Features at a Glance

- **Premixed, one-reagent, ready-to-use solution** for ease of use
- **High signal-to-noise ratio**
- **Stable at room temperature for 1 year**
- **Three levels of sensitivity** from mid-picograms to low femtograms, for all your detection needs
- **Consistent results** by avoiding pipetting errors and potential contamination, for increased confidence
- **Compatible with all protein imaging technology** chemiluminescence imagers and X-ray film
- **Suitable for different types of membranes and blocking reagents**



## Discover our Western Lightning ONE chemiluminescent substrates

Part number	Chemiluminescent substrate	Features	Unit size
NEL130001EA	Western Lightning ONE Pico	<ul style="list-style-type: none"> <li>Mid-picogram detection</li> <li>Ideal for most routine analysis of abundant proteins</li> <li>Low background for high signal to noise ratio</li> </ul>	25 mL
NEL131001EA			250 mL
NEL132001EA			500 mL
NEL140001EA	Western Lightning ONE Femto	<ul style="list-style-type: none"> <li>Mid-femtogram detection</li> <li>Well-suited for a wide range of antibody dilutions</li> <li>Detects protein levels with high signal intensity</li> </ul>	25 mL
NEL141001EA			250 mL
NEL142001EA			500 mL
NEL150001EA	Western Lightning ONE Femto Ultra	<ul style="list-style-type: none"> <li>Low femtogram detection</li> <li>Low antibody consumption</li> <li>Detects protein levels with superior signal intensity</li> </ul>	25 mL
NEL151001EA			125 mL
NEL152001EA			250 mL

For more information visit [www.Revvy.com](http://www.Revvy.com)



## Comparison of Western Lightning ONE versus major competitors:

### Performance and signal duration

Western blotting detection of HDAC-1 in Hela cell lysate. Exposure time is 120 secs for each time point.

