



revvity

# Expand your potential, add the Varispan Gripper.

For Fontus and JANUS G3 workstations\*

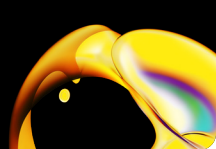
Stop wasting time and resources on inflexible liquid handling platforms.

Revvity's Fontus™ and JANUS™ G3 workstations adapt to your evolving needs.

The instruments' intuitive design lets you make quick, easy adjustments to your protocols, keeping your research on track and your budget in check.

The new Varispan™ Gripper is now available to you as a simple add-on option to your existing Revvity liquid handler.

**Cost- and time-savings option for  
your application developments:**

- Labware movement automation
  - Walkaway time increase
  - Protocol expansion
  - Space Optimization
- 



For research use only. Not for use in diagnostic procedures.

## Small and powerful

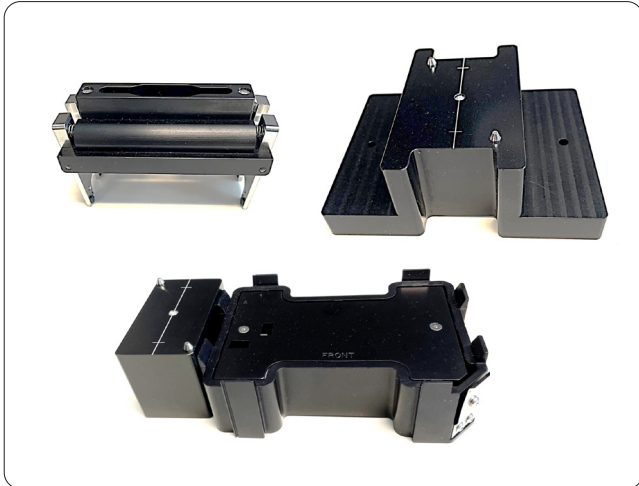
Especially designed to expand your workflow, the Varispan Gripper:

- moves labware on the JANUS or Fontus Liquid Handler deck
- attaches to the VersaTips on the Varispan Arm
- can be used on either 4-tip or 8-tip module
- is compatible with regular or shortened VersaTips
- sits on a holder on the deck (one deck location) or off the deck
- could be used for integrations

## How to order the Varispan Gripper?

The Varispan Gripper Kit (CLS159491) includes:

- 1x Varispan Gripper
- 1x On-Deck Holder for the Gripper
- 1x Off-Deck Holder for the Gripper



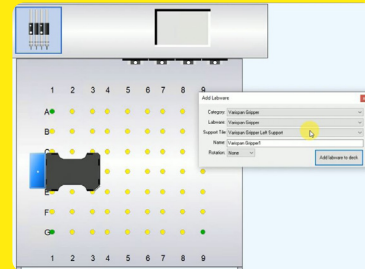
## Ease-of-use

So simple, you can install the Varispan Gripper by yourself!\*\*

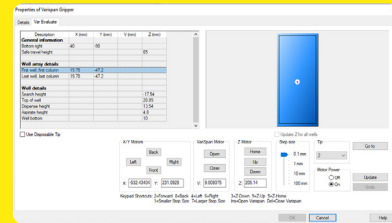
1. Enable the Varispan Gripper in WinPREP \*(version 6.0 or higher)



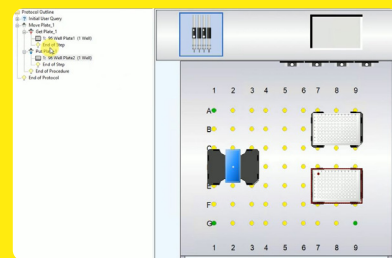
2. Add the gripper to the deck (from the drop-down menu)



3. Calibrate its position (with just a few clicks)



4. Create labware move procedure (simple drag and drop)



**Start using your new Varispan Gripper!**

\*\* Remote support available for some customers who need it!

revvity