



# NGS software designed by a lab, for your lab.

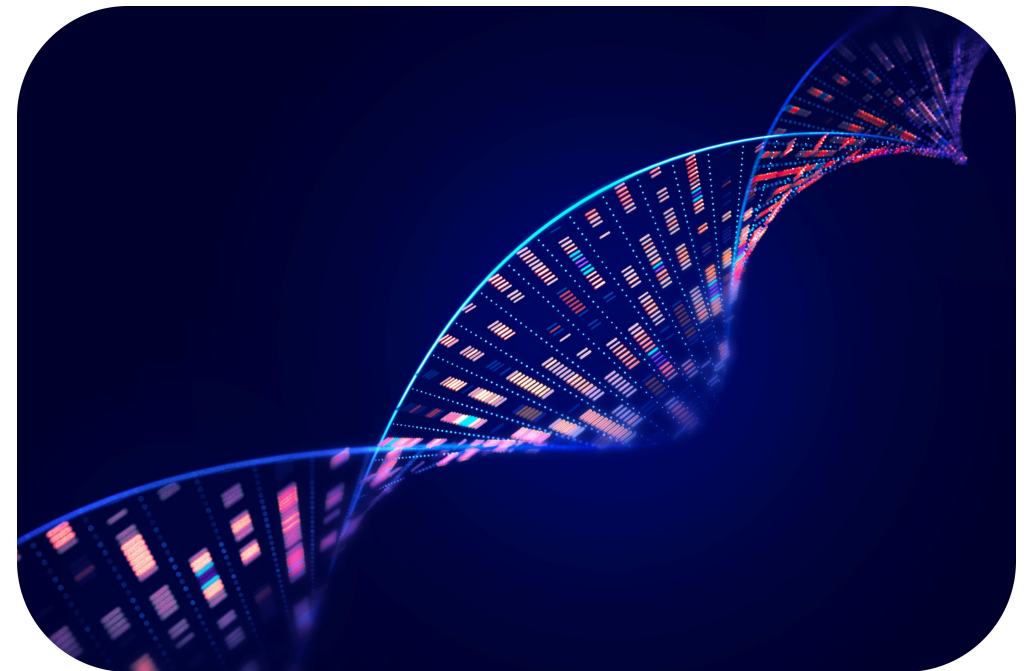
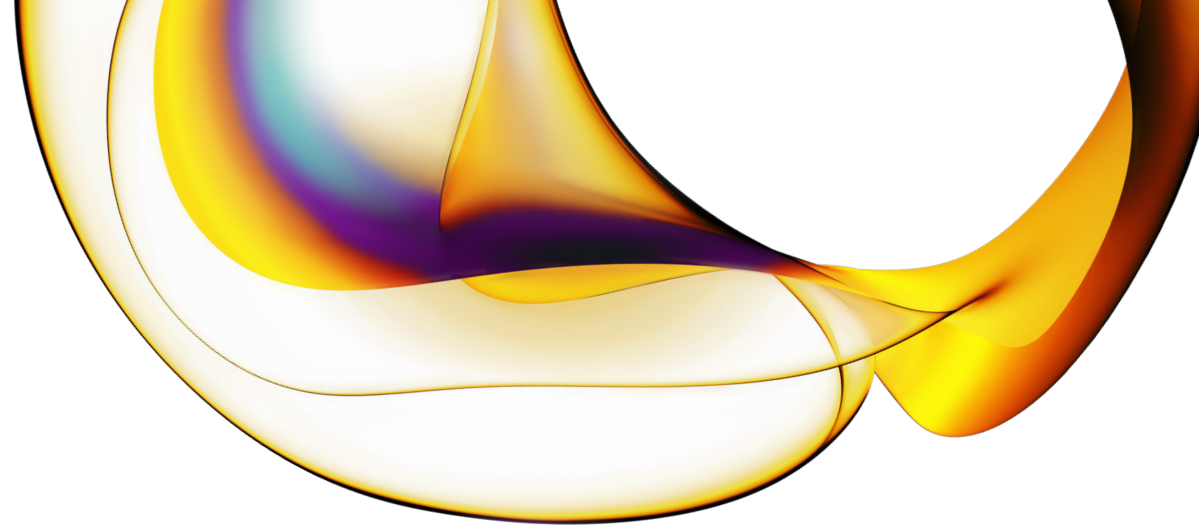
## **A complete software solution primed for data security.**

For those involved in genetic research, it is agreed that data security is of high importance. In operations that handle such sensitive data, we maintain that software security should be a top priority and should be compliant with the highest standards.

To this end, Revvity's NGS software - featuring Revvity Genomics LIMS, Revvity Genomics Analyze and Revvity Genomics Interpret modules - was carefully designed to secure cloud-based applications, data, and infrastructure. This solution protects against unauthorized access, data breaches, and other security threats within an easy-to-use interface.

Our software encompasses a range of technologies, protocols, and best practices designed to ensure your data's confidentiality, integrity, and availability. Backed with the same level of quality you've come to expect from Revvity's newborn screening software solutions. Learn how your laboratory can get started today.

For research use only. Not for use in diagnostic procedures.



## Key security features

With Revvity, your data is held to the highest security standards available, which we continue to adapt over time with the rise of new security threats.



### Centralized security management

Our dedicated team monitors and maintains software safety and security



### Certified to the latest standards

Cloud is certified under the ISO/IEC 27001 information security management principles enabling HIPAA information security standards in-app



### Configurable access control

Determine who can utilize the software based on role and responsibility



### Data encryption

Encrypting data in transit (outside and inside the cloud), between each of the application components (in the cloud), and in the database and storage



### Data loss prevention (DLP)

Preventing accidental exposure or infiltration of sensitive information, detecting and blocking the transmission of sensitive data outside the organization, or encrypting data before it leaves the cloud environment



### Regular testing

External companies routinely audit our software's security to maintain robustness\*

Speak to your local representative or visit [Revvity.com](https://www.revvity.com) for more information.

For research use only. Not for use in diagnostic procedures.

\*Live customer data is not shared during these exercises

revvity