

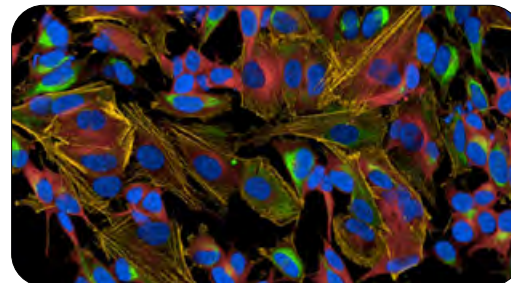
PhenoVue cellular imaging reagents.

Phenomenal fluorescence

Revvity's PhenoVue™ cellular imaging reagents complement our market-leading high-content screening instruments, image analysis software, microplates and automation, providing an integrated solution across the entire cellular imaging workflow.

Building on our extensive expertise in imaging instrumentation, fluorescent dye chemistry and assay development, our PhenoVue reagents are designed to help you get the best from your cellular imaging applications.

PhenoVue reagents are complemented by our range of imaging microplates, including PhenoPlate™ which have been engineered to deliver superior images and the highest quality data for high-content applications.



Optimized and extensively validated, our PhenoVue range includes:

Organelle and cell compartment stains

Bright dyes for high-quality images.

Fluorescent secondary antibodies

Cross-adsorbed, and highly cross-adsorbed for multiplex immunofluorescence experiments.

Cell painting kits

Set of six fluorescent probes and an optimized protocol to streamline your workflow.

Multi organelle staining kits

Set of five ready to use bright fluorescent probes to visualize five key organelles. Applicable to fixed cell models, this kit provides an alternative to the established cell painting assay.

Neuronal differentiation staining kit

Set of four ready to use fluorescent probes to visualize mature neurons in brain cell derived co-cultures, as well as monitor the neuronal differentiation process from progenitors.

Cell function reagents and kits

Complete suite of reagents and kits for visualizing key cellular events, as well as indicators for calcium, reactive oxygen species (ROS), or hypoxia.

PhenoVue selection guide

PhenoVue cell compartment and organelle stains

Description	Pack size	Maximum emission wavelength (nm)																		
		455	457	504	510	520	570	576	580	585	590	599	603	617	638	657	662	670	694	697
PhenoVue Fluor - Concanavalin A	2 x 1 mg									CP94001										
	5 x 1 mg					CP94881	CP95551						CP95681	CP95941				CP96471		
PhenoVue Fluor - Phalloidin	1 x 300 units (10 nmoles)					CP24881	CP25551			CP24001			CP25681	CP25941				CP26471		
PhenoVue Fluor - WGA	2 x 1 mg									CP14001										
	5 x 1 mg					CP14881	CP15551						CP15681	CP15941				CP16471		
PhenoVue mitochondrial stain	20 x 50 µg							CP301					CP3R1				CP3D1			
PhenoVue lysosomal stain	20 x 50 µg				CP10G1							CP10R1				CP10DR1				
PhenoVue Nile red lipid stain	2 x 10 mg									CP41 *					CP41 *					
PhenoVue 493 lipid stain	5 x 2 mg			CP51																
PhenoVue DAPI nuclear stain	1 x 1 mL (1 mg/mL)		CP81																	
PhenoVue 512 nucleic acid stain	1 x 250 µL (5 mM solution in DMSO)											CP61								
PhenoVue Hoechst 33342 nuclear stain	1 x 10 mg	CP71																		
	1 x 100 mg	CP72																		
PhenoVue Fluor 647 live cell actin stain	1 x 5 nmol																	CP22R1		
	3 x 5 nmol																	CP22R2		
PhenoVue Fluor live cell tubulin stain	2 x 50 nmol								CP2101									CP21R1		

PhenoVue cell compartment and organelle stains continued

Description	Pack size	Maximum emission wavelength (nm)																		
		455	457	504	510	520	570	576	580	585	590	599	603	617	638	657	662	670	694	697
PhenoVue DRAQ5™ total cell nuclear stain	1 x 50 µL																			CP161
	1 x 200 µL																			CP162
	1 x 1 mL																			CP163
PhenoVue DRAQ7™ dead cell nuclear stain	1 x 1 mL																		CP171	

*Maximum emission wavelength of 585 nm when complexed with triglycerides, maximum emission wavelength of 638 nm when complexed with phospholipids.

PhenoVue fluorescent secondary antibodies

Description	Cross-adsorption (pack size)	Maximum emission wavelength (nm)				
		520	570	603	617	670
PhenoVue Fluor - Donkey anti-mouse antibody	Cross-adsorbed (1 x 1 mg)	2DXM488C1	2DXM555C1	2DXM568C1	2DXM594C1	2DXM647C1
	Highly cross-adsorbed (1 x 1 mg)	2DXM488H1	2DXM555H1	2DXM568H1	2DXM594H1	2DXM647H1
PhenoVue Fluor - Donkey anti-rabbit antibody	Cross-adsorbed (1 x 1 mg)	2DXRB488C1	2DXRB555C1	2DXRB568C1	2DXRB594C1	2DXRB647C1
	Highly cross-adsorbed (1 x 1 mg)	2DXRB488H1	2DXRB555H1	2DXRB568H1	2DXRB594H1	2DXRB647H1
PhenoVue Fluor - Goat anti-rabbit antibody	Cross-adsorbed (1 x 1 mg)	2GXRB488C1	2GXRB555C1	2GXRB568C1	2GXRB594C1	2GXRB647C1
	Highly cross-adsorbed (1 x 1 mg)	2GXRB488H1	2GXRB555H1	2GXRB568H1	2GXRB594H1	2GXRB647H1
PhenoVue Fluor - Goat anti-mouse antibody	Cross-adsorbed (1 x 1 mg)	2GXM488C1	2GXM555C1	2GXM568C1	2GXM594C1	2GXM647C1
	Highly cross-adsorbed (1 x 1 mg)	2GXM488H1	2GXM555H1	2GXM568H1	2GXM594H1	2GXM647H1
PhenoVue Fluor - Goat anti-rat antibody	Highly cross-adsorbed (1 x 1 mg)	2GXRT488H1	2GXRT555H1	2GXRT568H1	2GXRT594H1	2GXRT647H1
PhenoVue Fluor - Rat anti-mouse antibody	Highly cross-adsorbed (1 x 0.5 mg)	2RTXM488G1H1				2RTXM647G2AH1

PhenoVue cell painting kits

Description	Pack size	Maximum emission wavelength (nm)				
		455	520	570	590	603
PhenoVue cell painting kits	For 1 x 384-well plate	PING11 *				
	For 10 x 384-well plates	PING12 *				
	For 100 x 384-well plates	PING13 *				
PhenoVue cell painting JUMP kits	For 1 x 384-well plate	PING21 *				
	For 10 x 384-well plates	PING22 *				
	For 100 x 384-well plates	PING23 *				

*PhenoVue cell painting kits contain PhenoVue Hoechst 33342 nuclear stain (max em. 455 nm), PhenoVue Fluor 488 Concanavalin A (max em. 520 nm), PhenoVue 512 nucleic acid stain (max em. 590 nm), PhenoVue Fluor 555 - WGA (max em. 570 nm), PhenoVue Fluor 568 - Phalloidin (max em. 603 nm), and PhenoVue 641 mitochondrial stain (max em. 662 nm).

PhenoVue multi organelle staining kit

Description	Pack size	Maximum emission wavelength (nm)			
		455	504	570	585
PhenoVue multi organelle staining kit	For 1 x 384-well plate	PMOS11 *			

*PhenoVue multi organelle kit contains PhenoVue Hoechst 33342 nuclear stain (max em. 455 nm), PhenoVue 493 lipid stain (max em. 504 nm), PhenoVue Fluor 555 (max em. 570 nm), PhenoVue Fluor 400LS (max em. 585 nm), and PhenoVue Fluor 647 (max em. 670 nm).

PhenoVue neuronal differentiation staining kit

Description	Pack size	Maximum emission wavelength (nm)		
		455	520	570
PhenoVue neuronal differentiation staining kit	For 1 x 384-well plate	PNDIF11 *		

*PhenoVue neuronal differentiation staining kit contains PhenoVue Hoechst 33342 nuclear stain (max em. 455 nm), PhenoVue Fluor 488 - Rat anti-mouse IgG antibody highly cross-adsorbed (max em. 520 nm), PhenoVue Fluor 555 - Phalloidin (max em. 570 nm), PhenoVue Fluor 647 - Rat anti-mouse IgG antibody highly cross adsorbed (max em. 670 nm).

PhenoVue cell function reagents and kits

Description	Pack size	Maximum emission wavelength (nm)										
		505	514	515	517	528	530	588	593	617	670	697
PhenoVue 505 live cell caspase-3/7 activity stain	1 x 100 µL (1 mM in DMSO)						CP22G1					
PhenoVue Cal-520 AM Bright, calcium indicator	10 x 50 µg (45 nmol)			CP115201								
PhenoVue Cal-590 AM Bright, calcium indicator	10 x 50 µg (41 nmol)								CP115901			
PhenoVue Cal-520 AM, calcium indicator	10 x 50 µg (45 nmol)			CP125201								
PhenoVue Cal-590 AM, calcium indicator	10 x 50 µg (40 nmol)							CP125901				
PhenoVue Fluo-4 AM, calcium indicator	10 x 50 µg (45 nmol)					CP131						
PhenoVue Fura-2 AM, calcium indicator	20 x 50 µg (50 nmol)	CP141										
PhenoVue ROS-490, total oxidative stress indicator	1 x 1 mg (2.362 µmol)				CP15G							
PhenoVue ROS-570, total oxidative stress indicator	1 x 1 mg (1.365 µmol)							CP15O				
PhenoVue ROS-670, total oxidative stress indicator	1 x 1 mg (1.318 µmol)										CP15DR	
PhenoVue HypoxiTRAK™, hypoxia indicator	1 x 500 µL (10 µM - 5 nmol)											CP181
PhenoVue live/dead cell viability assay kit*	For 2 x 384-well plates		PCVA11 *							PCVA11 *		

*PhenoVue live/dead cell viability assay kit contains Calcium AM dye for live cells (514 nm maximum emission wavelength) and propidium iodide dye for dead cells (617 nm maximum emission wavelength).

PhenoVue primary antibodies

Description	Pack size	Part number
PhenoVue anti-HSP60 antibody 100X	1x100 µL	PAHSP601
PhenoVue anti-LAMP1 antibody 100X	1x100 µL	PALAMP11
PhenoVue anti-MAP2 antibody 100X	1x100 µL	PABMAP2

PhenoVue complementary reagents

Description	Pack size	Part number
PhenoVue dye diluent A (5X)	1 x 8 mL	PVDDA1
PhenoVue paraformaldehyde 4% methanol-free solution	1 x 25 mL	PVPFA41
PhenoVue paraformaldehyde 4% methanol-free solution	5 x 25 mL	PVPFA42
PhenoVue permeabilization 0.5% Triton X-100 solution	1 x 25 mL	PVPERM051
PhenoVue permeabilization 0.5% Triton X-100 solution	5 x 25 mL	PVPERM052
PhenoVue pluronic F-127, 20% solution	1 x 10 mL	CP191
PhenoVue probenecid, ready to use solution	10 x 77 mg	CP201

Microplates for imaging applications

PhenoPlate™ (formerly CellCarrier™ Ultra microplates)

Description	Part numbers				
	Case of 10	Case of 40	Case of 50	Case of 160	Case of 200
PhenoPlate 96-well, black, optically clear flat-bottom, tissue-culture treated, lids		6055302	6055300	6055308	
PhenoPlate 96-well, black, optically clear flat-bottom, poly-D-lysine-coated, lids		6055500		6055508	
PhenoPlate 96-well, black, optically clear flat-bottom, collagen-coated, lids		6055700		6055708	
PhenoPlate 96-well, black, optically clear flat-bottom, fibronectin-coated, lids	6055600	6055602			
PhenoPlate 96-well, black, optically clear flat-bottom, ultra-low-attachment-coated, lids	6055800	6055802			

PhenoPlate™ (formerly CellCarrier™ Ultra microplates) continued

384-well PhenoPlates	Case of 10	Case of 40	Case of 50	Case of 160	Case of 200
PhenoPlate 384-well, black, optically clear flat-bottom, tissue-culture treated, lids		6057302	6057300	6057308	
PhenoPlate 384-well, black, optically clear flat-bottom, tissue-culture treated, non-irradiated, lids				6057328	
PhenoPlate 384-well, black, optically clear flat-bottom, poly-D-lysine-coated, lids		6057500		6057508	
PhenoPlate 384-well, black, optically clear flat-bottom, collagen-coated, lids		6057700		6057708	
PhenoPlate 384-well, black, optically clear flat-bottom, fibronectin-coated, lids	6057600	6057602			
PhenoPlate 384-well, black, optically clear flat-bottom, ultra-low-attachment-coated, lids	6057800	6057802			
1536-well PhenoPlates	Case of 10	Case of 40	Case of 50	Case of 160	Case of 200
PhenoPlate 1536-well, black, optically clear flat-bottom, tissue-culture treated, lids			6054305		
PhenoPlate lids					
Lid, clear, for PhenoPlates, sterile					6057328

CellCarrier Spheroid microplates

Description	Part numbers	
	Case of 10	Case of 40
CellCarrier Spheroid ULA 96-well microplates, round bottom, clear, ULA-coated	6055330	6055334

ViewPlate microplates

Description	Part numbers				
	Case of 10	2 x cases of 25	Case of 40	Case of 50	Case of 160
96-well ViewPlates					
ViewPlate-96, black, optically-clear bottom, tissue culture-treated, with lid				6005182 [†]	
ViewPlate-96, black, optically-clear bottom, PDL-coated, with lid			6005710 **		
ViewPlate-96, black, optically-clear bottom, tissue culture-treated, with lid		6005225 *			
ViewPlate-96, black, optically-clear bottom, collagen-coated, with lid			6005810 **		6005818 [†]
384-well ViewPlates					
ViewPlate-384, black, optically-clear bottom, tissue culture-treated, sterile, with lid			6007460		
ViewPlate-384, black, optically-clear bottom, PDL-coated, tissue culture-treated, sterile, with lid			6007710		6007718
ViewPlate-384, black, optically-clear bottom, collagen-coated, tissue culture-treated, sterile, with lid			6007810		6007818
1536-well ViewPlates					
ViewPlate-1536, black, optically-clear bottom, tissue culture-treated, sterile, with lid			6004460		
ViewPlate-1536, black, optically-clear bottom, PDL-coated, tissue culture-treated, sterile, with lid	6004710				
ViewPlate-1536, black, optically-clear bottom, collagen-coated, tissue culture-treated, sterile, with lid	6004810				

* Two sleeves of 25 plates with lids

** Two sleeves of 20 plates with lids

[†] Individually pouched with lids

[‡] Eight sleeves of 20 plates with lids

For more information contact your Sales Representative or visit www.revvity.com

