



Plan for your next generation of instruments.



End of service life announcement for your radiometric detection instrument

At Revvity, we're proud that our instruments still perform at a high level, even after decades of service. But, in such a rapidly progressing industry, we want to make sure that our customers are working with the most cutting edge technology.

Our commitment to provide our customers with the most advanced technology on the market means that sometimes we find it necessary to retire older systems, primarily due to the difficulties in sourcing parts no longer manufactured.

We've determined that some models in our radiometric detection product lines have reached the end of their product life cycle. Review the listings below to determine if your instrument is affected, and the date after which we will no longer offer full service support for these models. Also indicated are current production models which offer significant hardware and software enhancements.

December 31, 2017	
Legacy Model Number	Migrate To
TRICARB2500	4810
TRICARB2505	4810
TRICARB2550	4910
TRICARB2555	4910
TRICARBA3100	5110
TRICARBA3110	5110

June 30, 2018	
Legacy Model Number	Migrate To
1470 WIZARD	2470
WIZARD 1470	2470
WIZARD 1470020	2470
WIZARD 147020	2470
WIZARD10DET1470010	2470
WIZARD10DET1470020	2470
WIZARD1470	2470
WIZARD1DET1470001	2470
WIZARD2DET1470002	2470
WIZARD2DET1470012	2470

June 30, 2018	
Legacy Model Number	Migrate To
WIZARD2DET1470402	2470
WIZARD2DET1470412	2470
WIZARD5DET1470005	2470
WIZARD5DET1470015	2470
Wallac Wizard 1	2470
Wizard 1470	2470
Wizard 1480	2480
WIZARD1480011	2480
WIZARDONE1480001	2480
WIZARDONE1480011	2480

December 31, 2018	
Legacy Model Number	Migrate To
TRICARB2800	4810
TRICARB2800TR	4810
TRICARBA2810	4810
TRICARBA2910	4910
TRICARB2900	4910
MicroBeta/TriLux 1450-021	2450
MicroBeta/TriLux 1450-021 / S0048/63	2450
MicroBeta/TriLux 1450-021 / S0061	2450
MicroBeta/TriLux 1450-022	2450
MicroBeta/TriLux 1450-023	2450
MicroBeta/TriLux 1450-024	2450
MicroBeta/TriLux 1450-025	2450
MicroBeta/TriLux 1450-026	2450
MicroBeta/TriLux 1450-027	2450
MicroBeta/TriLux 1450-028 / S0034	2450
MicroBeta/TriLux 1450-028 / S0060	2450
MicroBeta/TriLux	2450
MicroBeta/TriLux 1450-029 / S0056	2450
MicroBeta/TriLux 1450-030 / S0051	2450
MicroBeta/TriLux 1450-030 / S0054	2450

December 31, 2020	
Legacy Model Number	Migrate To
TopCount C384V00	2450
TopCount C384V01	2450
TopCount C990201	2450
TopCount C9904V0	2450
TopCount C9904V1	2450
TopCount C990600	2450
TopCount C990601	2450
TopCount C991200	2450
TopCount C991201	2450
TopCount C9912V0	2450
TopCount C9912V1	2450

The latest technological developments for your lab

Take advantage of significant hardware and software advancements

The current models feature modern Windows®-based software, enhanced performance, expanded data handling and reporting capability, and optional Enhanced Security™ software to support 21 CFR Part 11 compliance.

Updated Tri-Carb® and Quantulus™ Liquid Scintillation Counter (LSC) features include:

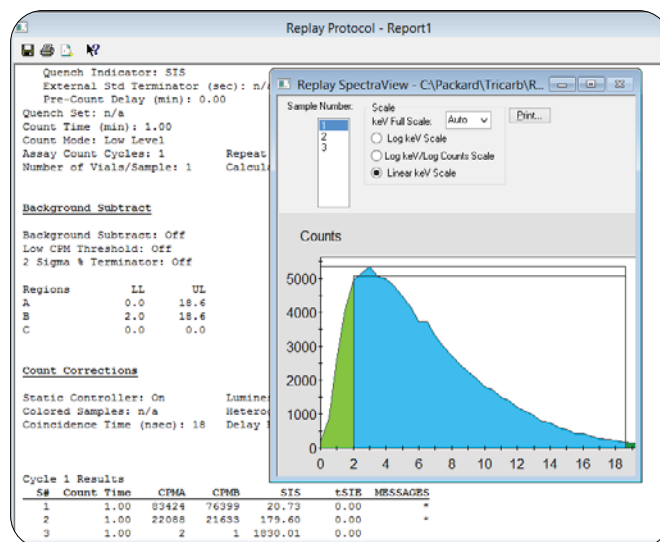
- QuantaSmart dedicated instrument and data reduction software in which a streamlined, tabbed dialogue makes protocol definition simple, minimizing the learning curve
- Reliable TR-LSC (Time-Resolved Counting), providing low backgrounds for sensitive measurements over the entire beta energy range
- PSA - Pulse Shape Analysis and optional Alpha and Beta discrimination counting mode, which includes revolutionary PSA histogram mode
- Replay post-run data reprocessing option to store all acquired data for recall and reprocessing, including editing or refining acquisition parameters
- SpectraWorks 2 spectral analysis package that determines optimal counting regions, performs spectral background subtraction, and calculates figure of merit automatically
- Quantulus includes patented Bismuth Germanium Oxide (BGO) and Guard Compensation Technology (GCT), which enhances discrimination against background yielding the highest E2/B values available in a multipurpose LSC

Updated Wizard²® Gamma Counter features include:

- WorkOut Plus™ Software option for fully automated data analysis with QA software for RIA/IRMA and custom data analysis and reporting
- Proven and robust NaI(Tl) detector technology
- Enhanced connectivity with easier LIMS integration and standard ASCII output
- Data Viewer - customized data viewing for faster, easier data recovery and spectral analysis



Quantulus GCT 6220



Replay data reprocessing with SpectraView (Tri-Carb/Quantulus).

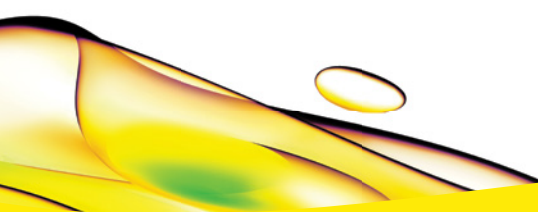
Updated MicroBeta²® Microplate Counter features include:

- Radiometric and luminescent detection abilities for GPCRs, kinases, reporter gene assays, and traditional liquid scintillation counting
- Versatile vial and 24/96-well plate format (available in 2- or 6-detector units) or, for higher throughput, 96/384-well plate format (available in 6- or 12-detector units)
- Both Coincidence Counting and Time Resolved-Liquid Scintillation Counting (TR-LSC) capabilities
- LumiJet option allows for up to two injectors, ideal for aequorin and calcium flux assays
- Available robotic loading and automation integrations



| MicroBeta²

Contact your sales representative to discuss modernizing your instrument now.



revvity