



Redefine your workflow.

Cell line development solutions

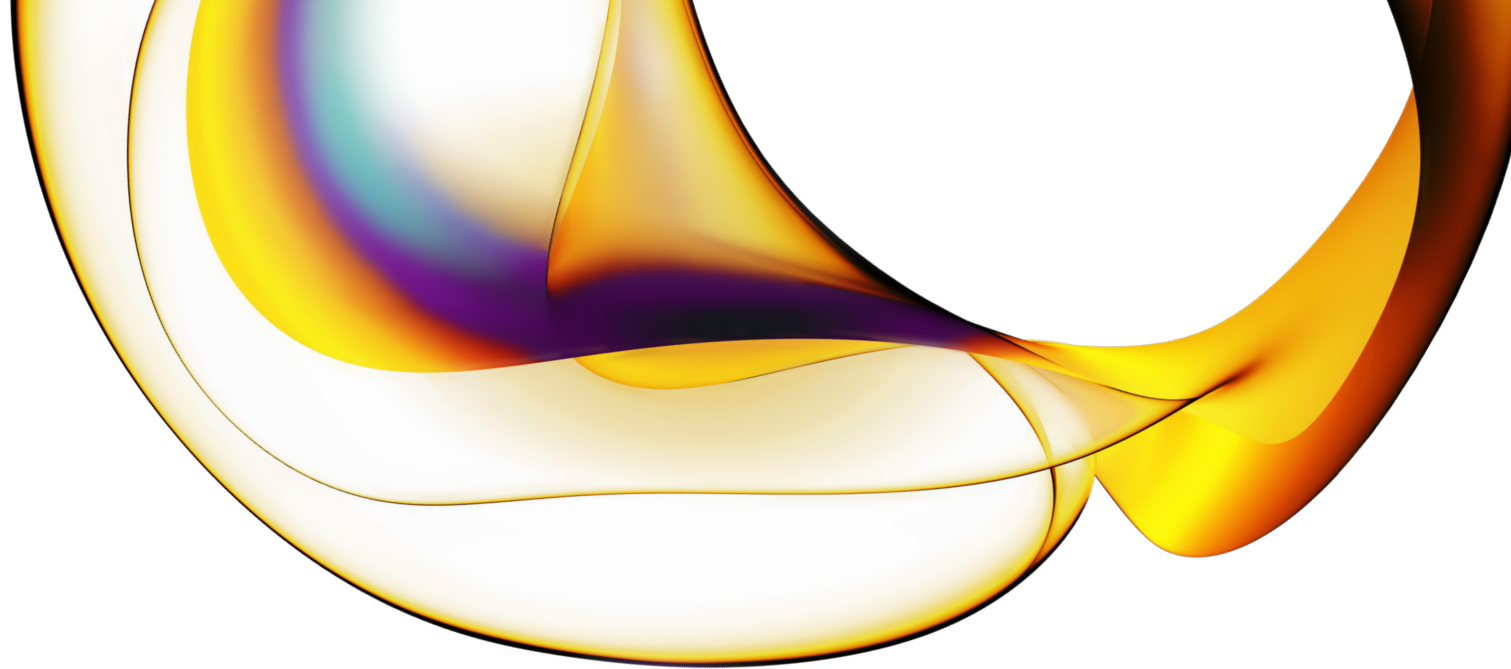
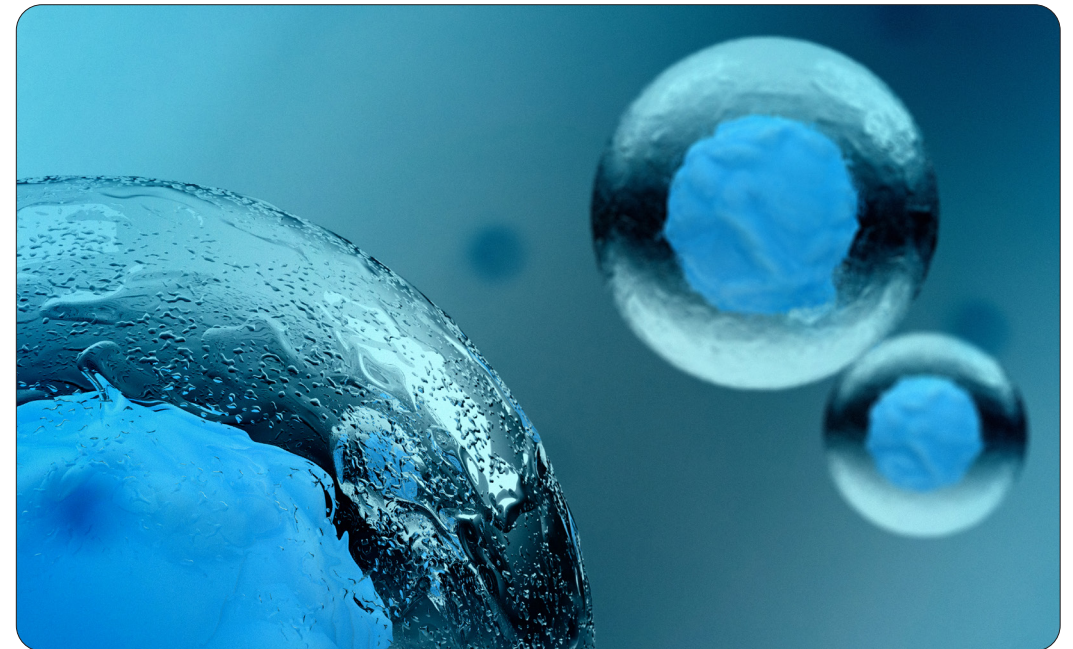
Our biotherapeutic development solutions are designed to streamline the entire cell line development (CLD) workflow, from expression systems through cell health evaluation and protein quantification and characterization — so you can elevate the efficiency of your cell line development, and establish stable, reproducible cell lines.

Streamline your process, improve productivity, and accelerate your pipeline

Our CHOSOURCE™ platform is a state-of-the-art expression system that redefines the development and manufacturing of biotherapeutics, with proven track records (100+ licensees worldwide and over 60 regulatory filings across multiple territories since 2018), full traceability, and reliable results, allowing you to:

- Break free from media and third-party constraints
- Effortlessly streamline cell line development processes
- Accelerate biologic development programs

Our CHOSOURCE GS KO cell line for commercial use can suit your specific needs during discovery, development, and protein manufacturing with a continuous commitment to innovation, technologies, and solutions.





Clone for larger scale

You can screen hundreds or thousands of clones using our automated cell counting and imaging platforms.

Modernize cell development process with high-throughput image cytometry

1. Provides image-based proof of clonality from single-cell with CRF21 Part11 compliance software.
2. Count every cell in the whole-well for analyzing the transfection and transduction efficiency of GFP, RFP, or other fluorescent labeled cells.
3. Integrate with automation system for high speed and high-throughput clone screening.

We serve a diverse range of organizations; our solutions are used by 47 of the 50 top pharmaceutical companies in the world. Let's partner and accelerate your cell development workflow journey.

Learn how you can benefit from a discounted CHOSOURCE™ GS KO cell line evaluation.

Alleviate bottlenecks and streamline your workflows

Our goal is to expand the boundaries of human potential through science. With our biotherapeutics discovery and development technology solutions and services, we aim to amplify your productivity and accelerate your progress. And you can rest assured all of this is backed by reliable and validated platforms, along with unparalleled technical expertise you can trust. Together, let's take research further than you ever imagined possible.

Bringing unique expertise to the field

With decades of expertise and a proven track record in innovation, including cell line engineering, protein expression, and characterization.

Customizing tailored solutions

We offer scientific consulting and technical expertise leading to customized solutions to meet your specific requirements.

A workflow that works harder

You can seamlessly integrate our technologies into your development process, saving time and resources while meeting validation and compliance standards.

United in support

Our dedicated technical support team can partner with you to address your challenges and offer you the help you need — right when you need it.

