

Bead mill consumables



Omni Bead Ruptor™ bead tube kits include everything you need to homogenize efficiently.

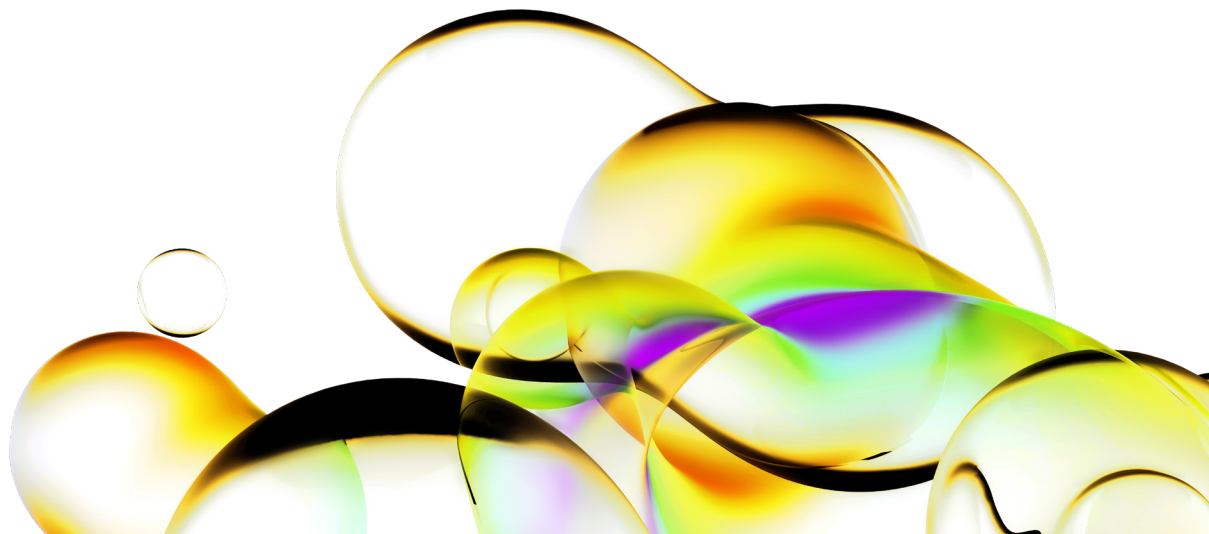
Bead beating is the most effective and versatile lysis method available. Revvity offers users the ultimate flexibility with a range of bead beating tubes and lysing matrices to support efficient homogenization of a wide range of samples. Omni Bead Ruptor bead beating tubes can be purchased in bulk or pre-filled with an optimized amount of lysing matrix to provide efficient, consistent, and high-yield sample homogenates.

Omni Bead tubes should be used exclusively with Omni Bead Ruptor homogenizers.

Bead mill homogenizers allow for closed vessel and multiple sample processing, minimizing risk of cross-contamination. Our homogenizers and bead beating tubes are very beneficial to various laboratories that process a wide range of sample volumes.

Features

- Wide variety of lysing matrices available
- Tubes are optimized to withstand high impact forces
- Multiple purity grades to ensure high analyte integrity



Pre-filled bead mill tubes

Bead Media	Tube Size	Bead Size	Description	Quantity	Part Number	Compatibility BR4	Compatibility BR12	Compatibility BR24	Compatibility BRElite	DNase/RNase Free	Microbial DNA Free
Carbide	0.5 mL	0.25 mm	RNA Extraction & Soil Homogenizing Mix	50	19-625	Yes 5 m/s	Yes 6 m/s	Yes 6.5 m/s	Yes 8 m/s	Yes	No
Ceramic	0.5 mL	1.4 mm	Soft Tissue Homogenizing Mix	50	19-626	Yes 5 m/s	Yes 6 m/s	Yes 6.5 m/s	Yes 8 m/s	Yes	No
Ceramic	0.5 mL	1.4 mm	Soft Tissue Homogenizing Mix	50	19-626D	Yes 5 m/s	Yes 6 m/s	Yes 6.5 m/s	Yes 8 m/s	Yes	Yes
Ceramic	1.5 mL	1.4 mm	Soft Tissue Homogenizing Mix	50	19-617	Yes 5 m/s	No	No	Yes 5 m/s	Yes	No
Ceramic	1.5 mL	1.4 mm	Soft Tissue Homogenizing Mix	50	19-617D	Yes 5 m/s	No	No	Yes 5 m/s	Yes	Yes
Ceramic	1.5 mL	2.8 mm	Hard Tissue Homogenizing Mix	50	19-618	Yes 5 m/s	No	No	Yes 5 m/s	Yes	No
Ceramic	1.5 mL	2.8 mm	Hard Tissue Homogenizing Mix	50	19-618D	Yes 5 m/s	No	No	Yes 5 m/s	Yes	Yes
Ceramic	2 mL	0.1 mm	Universal Microbial Homogenizing Mix	50	19-632	Yes 5 m/s	Yes 6 m/s	Yes 6.5 m/s	Yes 8 m/s	Yes	No
Ceramic	2 mL	0.1 mm	Universal Microbial Homogenizing Mix	50	19-632D	Yes 5 m/s	Yes 6 m/s	Yes 6.5 m/s	Yes 8 m/s	Yes	Yes
Ceramic	2 mL	0.1 mm	Homogenizing Mix	50	19-634	Yes 5 m/s	Yes 6 m/s	Yes 6.5 m/s	Yes 8 m/s	Yes	No
Ceramic	2 mL	0.1 mm	Homogenizing Mix	50	19-683D	Yes 5 m/s	Yes 6 m/s	Yes 6.5 m/s	Yes 8 m/s	Yes	Yes
Ceramic	2 mL	0.1 mm and 2.8 mm	Microbiome Homogenizing Mix	50	19-636D	Yes 5 m/s	Yes 6 m/s	Yes 6.5 m/s	Yes 8 m/s	Yes	Yes
Ceramic	2 mL	0.5 mm	Universal Microbial Grinding Mix	50	19-631	Yes 5 m/s	Yes 6 m/s	Yes 6.5 m/s	Yes 8 m/s	Yes	No
Ceramic	2 mL	0.5 mm	Universal Microbial Grinding Mix	50	19-631D	Yes 5 m/s	Yes 6 m/s	Yes 6.5 m/s	Yes 8 m/s	Yes	Yes
Ceramic	2 mL	1.4 mm	Soft Tissue Homogenizing Mix	50	19-627	Yes 5 m/s	Yes 6 m/s	Yes 6.5 m/s	Yes 8 m/s	Yes	No
Ceramic	2 mL	1.4 mm	Soft Tissue Homogenizing Mix	50	19-627D	Yes 5 m/s	Yes 6 m/s	Yes 6.5 m/s	Yes 8 m/s	Yes	Yes
Ceramic	2 mL	1.4 mm and 2.8 mm	Homogenizing Mix	50	19-629	Yes 5 m/s	Yes 6 m/s	Yes 6.5 m/s	Yes 8 m/s	Yes	No
Ceramic	2 mL	2.8 mm	Hard Tissue Homogenizing Mix	50	19-628	Yes 5 m/s	Yes 6 m/s	Yes 6.5 m/s	Yes 8 m/s	Yes	No
Ceramic	2 mL	2.8 mm	Hard Tissue Homogenizing Mix	50	19-628D	Yes 5 m/s	Yes 6 m/s	Yes 6.5 m/s	Yes 8 m/s	Yes	Yes
Ceramic	7 mL	1.4 mm	Soft Tissue Homogenizing Mix	50	19-677	Yes 5 m/s	Yes 6 m/s	No	Yes 6 m/s	No	No
Ceramic	7 mL	2.8 mm	Hard Tissue Homogenizing Mix	50	19-678	Yes 5 m/s	Yes 6 m/s	No	Yes 6 m/s	Yes	No
Ceramic	7 mL	2.8 mm	Hard Tissue Homogenizing Mix	50	19-678D	Yes 5 m/s	Yes 6 m/s	No	Yes 6 m/s	Yes	Yes
Ceramic	15 mL	2.8 mm	Hard Tissue Homogenizing Mix	50	19-6158	No	No	No	Yes 8 m/s	No	No
Ceramic	30 mL	1.4 mm	Soft Tissue Homogenizing Mix	50	19-6357	No	No	No	Yes 5 m/s	No	No

Pre-filled bead mill tubes (*continue*)

Bead Media	Tube Size	Bead Size	Description	Quantity	Part Number	Compatibility BR4	Compatibility BR12	Compatibility BR24	Compatibility BRElite	DNase/RNase Free	Microbial DNA Free
Ceramic	30 mL	1.4 mm	Soft Tissue Impact Homogenizing Mix	50	19-6357Z	No	No	No	Yes 5 m/s	No	No
Ceramic	30 mL	2.8 mm	Hard Tissue Homogenizing Mix	50	19-6358	No	No	No	Yes 5 m/s	Yes	No
Ceramic	30 mL	2.8 mm	Hard Tissue Homogenizing Mix	50	19-6358D	No	No	No	Yes 5 m/s	Yes	Yes
Ceramic	30 mL	2.8 mm	Hard Tissue Impact Homogenizing Mix	50	19-6358Z	No	No	No	Yes 5 m/s	No	No
Ceramic	50 mL	2.8 mm	Hard Tissue Homogenizing Mix	50	19-6508	No	No	No	Yes 5 m/s	No	No
Garnet	0.5 mL	0.15 mm	Micro-Organism Lysing Mix	50	19-623	Yes 5 m/s	Yes 6 m/s	Yes 6.5 m/s	Yes 8 m/s	Yes	No
Garnet	2 mL	0.7 mm	Hard & Fibrous Tissue Mix	50	19-624	Yes 5 m/s	Yes 6 m/s	Yes 6.5 m/s	Yes 8 m/s	Yes	No
Garnet	7 mL	0.7 mm	Homogenizing Mix	50	19-674	Yes 5 m/s	Yes 6 m/s	No	Yes 6 m/s	No	No
Glass	0.5 mL	0.1 mm and 0.5 mm	Homogenizing Mix	50	19-630D	Yes 5 m/s	Yes 6 m/s	Yes 6.5 m/s	Yes 8 m/s	Yes	Yes
Glass	2 mL	0.1 mm	Micro-Organism Lysing Mix	50	19-621	Yes 5 m/s	Yes 6 m/s	Yes 6.5 m/s	Yes 8 m/s	Yes	No
Glass	2 mL	0.5 mm	Tough Micro-Organism Lysing Mix	50	19-622	Yes 5 m/s	Yes 6 m/s	Yes 6.5 m/s	Yes 8 m/s	Yes	No
Glass	2 mL	0.5 mm	Tough Micro-Organism Lysing Mix	50	19-622D	Yes 5 m/s	Yes 6 m/s	Yes 6.5 m/s	Yes 8 m/s	Yes	Yes
Glass	7 mL	0.5 mm	Homogenizing Mix	50	19-672	Yes 5 m/s	Yes 6 m/s	No	Yes 6 m/s	No	No
Metal	1.5 mL	2.4 mm	Hard Tissue Grinding Mix	50	19-610	Yes 5 m/s	No	No	Yes 5 m/s	Yes	No
Metal	2 mL	2.4 mm	Hard Tissue Grinding Mix	50	19-620	Yes 5 m/s	Yes 6 m/s	Yes 6.5 m/s	Yes 8 m/s	Yes	No
Metal	2 mL	2.4 mm	Hard Tissue Grinding Mix	50	19-620D	Yes 5 m/s	Yes 6 m/s	Yes 6.5 m/s	Yes 8 m/s	Yes	Yes
Metal	7 mL	2.4 mm	Hard Tissue Grinding Mix	50	19-670	Yes 5 m/s	Yes 6 m/s	No	Yes 6 m/s	No	No
Metal	30 mL	2.4 mm	Hard Tissue Grinding Mix	50	19-6350	No	No	No	Yes 5 m/s	No	No
Metal	30 mL	2.4 mm	Hard Tissue Impact Grinding Mix	50	19-6350Z	No	No	No	Yes 5 m/s	No	No

Bulk bead mill tubes

Tube selection guide							
Volume range							
Tube size	20 µL	100 µL	1 mL	5 mL	15 mL	30 mL	50 mL
0.5 mL	20 µL - 300 µL						
1.2 mL stripwell	20 µL - 800 µL						
1.5 mL		200 µL - 1 mL					
2 mL		100 µL - 1.8 mL					
7 mL			1 mL - 5 mL				
15 mL				5 mL - 15 mL			
30 mL					2 mL - 20 mL		
50 mL					2 mL - 35 mL		



Omni Bead Ruptor	Tube size	Description	Quantity	DNase/RNase free	Order #
Omni Bead Ruptor 4 (25-010)	0.5 mL	Non-reinforced Tubes with caps	500	■	19-650
	1.5 mL	Polypropylene microtube, RNase, DNase free	500	■	19-661
			1,000	■	19-661-1000
Omni Bead Ruptor 12 (19-050)	2 mL	Non-reinforced Tubes with caps	500	■	19-647
		Reinforced Tubes with caps	500	■	19-648
			1,000	■	19-649
Omni Bead Ruptor Elite (19-042E)	7 mL	Empty Tubes with caps	500	■	19-651-500
			1,000	■	19-651
Omni Bead Ruptor Elite (19-042E)	1.2 mL	Rack of 96 Strip Well Tubes	10 racks	■	19-696
	15 mL	Empty Tubes with caps	100		19-6615
			500		19-6615-500
	30 mL	Empty Tubes with caps	100	■	19-6635
			500	■	19-6635-500
50 mL	Empty Tubes with caps	100		19-6650	



Omni Bead Ruptor 4



Omni Bead Ruptor 12



Omni Bead Ruptor Elite

Bulk beads certified RNase/DNase free

Bead Selection Guide										
Bead media										
	Glass		Garnet		Ceramic			Metal		
Sample type	0.1 mm	0.5 mm	0.15 mm	0.7 mm	0.1 mm	0.5 mm	1.4 mm	2.8 mm	6.5 mm	2.4 mm
Bacteria/Yeast	█	█			█	█				
Spores	█	█			█	█				
Algae/Plankton		█				█				
Soft Soil/Sediment/ Waste Water			█			█				
Clay/Faeces/Sludge				█		█				
Soft Tissues, Brain, Liver, Kidney, Cultured Mammalian Cells							█	█		
Hard Tissues, Heart, Muscle, Skin										█
Plant material										
Dry grinding									█	█
Dense Biological Material Hair, Bone, Seeds									█	█

Bead media	Bead size	Bead quantity	Description	Order #
Glass	0.1 mm	400 g	Fills 500 x 2 mL tubes	19-641
	0.5 mm	400 g	Fills 500 x 2 mL tubes	19-642
Garnet	0.15 mm	500 g	Fills 500 x 2 mL tubes	19-643
	0.7 mm	500 g	Fills 500 x 2 mL tubes	19-644
Ceramic	0.1 mm	500 g	Fills 500 x 2 mL tubes	19-683
	0.5 mm	500 g	Fills 500 x 2 mL tubes	19-684
	1.4 mm	325 g	Fills 500 x 2 mL tubes	19-645
	2.8 mm	325 g	Fills 500 x 2 mL tubes	19-646
	6.5 mm	325 g	Fills 500 x 2 mL tubes	19-682
Metal	2.4 mm	500 g	Fills 500 x 2 mL tubes	19-640



Ceramic



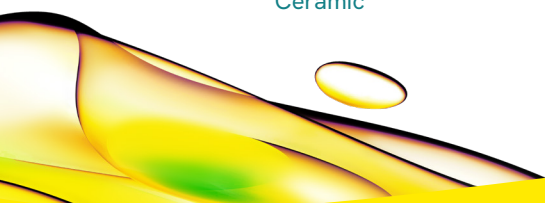
Garnet



Glass



Metal



revvity