



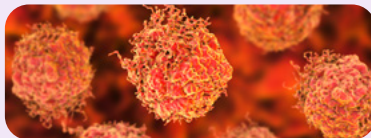
Latest products from Mimix Reference Standards

We'd like to share an overview of our recent launches that have expanded our portfolio to over 120 cell line-derived reference standards.

We proudly launched:

Mimix™ prostate cancer panel FFPE reference standard

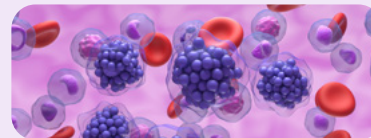
- Use for end-to-end verification of prostate cancer-specific mutations.
- Covers 9 different onco-relevant genes.
- Complementary to the broader Mimix prostate cancer reference standard range, including the cfDNA reference standard and matching negative control.
- Available with a batch specific supplementary NGS data.



[Find out more](#)

Mimix lymphoid cancer panel FFPE reference standard

- Cell line-derived to closely mimic patient lymphoid samples.
- Contains disease-relevant mutations.
- Provides end-to-end verification for testing lymphoid samples in FFPE format.
- Complements the Lymphoid Cancer Panel gDNA reference standard with matched negative control, and the broader Mimix blood cancer reference standard range.



[Find out more](#)

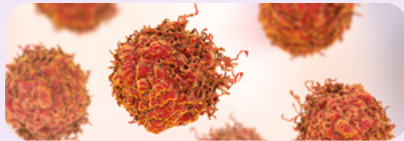
Mimix colorectal cancer panel FFPE reference standard

- Mimics patient samples and serves as a robust reference material for verifying NGS and other molecular biology methodologies aimed at detecting actionable mutations in key colorectal cancer genes.
- 11 highly onco-relevant mutations across 10 genes, including ALK, ABL1 and TP53.
- Complementary to the broader Mimix colorectal cancer reference standard range, including a matched negative control and ctDNA.
- Available with batch specific supplementary NGS data.

[Find out more](#)

Mimix PTEN loss FFPE reference standard

- Mimics the loss of PTEN observed in several cancers.
- Loss of PTEN function is prominent biomarker in prostate cancer and others including cancers of the lung, colon, ovaries and breast.



[Find out more](#)

Mimix quantitative multiplex (moderate) FFPE reference standard

- Provides researchers with cell line-derived moderately degraded DNA controls for results even closer to real patient samples.
- 11 highly onco-relevant mutations across 6 genes, including BRAF, EGFR and KRAS.
- Available in FFPE format.



[Find out more](#)

Looking for more information?

Stay up to date on our latest product launches, follow us on LinkedIn at Revvity for Life Sciences and Revvity for Diagnostics.

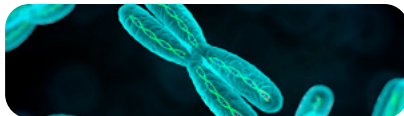
[Life sciences](#)

[Diagnostics](#)

We spotlighted:

Mimix Non-invasive Prenatal Testing (NIPT) reference standards

- Cell line-derived reference standards for screening fetal abnormalities.
- Available for Trisomy 21, Trisomy 18, Trisomy 13 and Euploid detection with matched maternal-fetal reference material. Compatible with the Vanadis™ NIPT system.

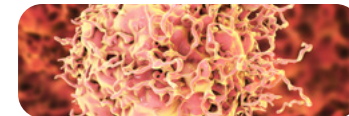


[Find out more](#)

[Watch webinar](#)

Mimix MSI FFPE DNA reference standard

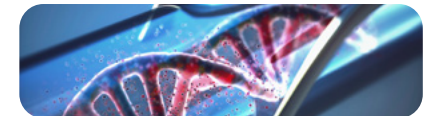
- Contains 13 biomarkers, relevant to determining the status of microsatellites in samples.
- Covers biomarkers recommended by the National Cancer Institutes' Bethesda Panel.
- Closely associated with colon cancers but biologically relevant to a range of other cancers.



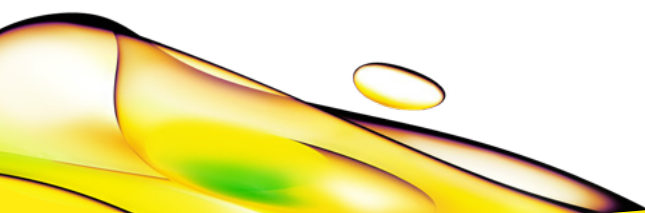
[Find out more](#)

Mimix MSS FFPE DNA reference standard

- Matched cell line-derived reference standard that can be used as a negative control to detect microsatellite status of any samples.
- Contains 13 biomarkers including BAT-25 and BAT-26, standardized to the National Cancer Institutes' Bethesda panel.
- Complementary to the MSI FFPE DNA reference standard.



[Find out more](#)



revvity