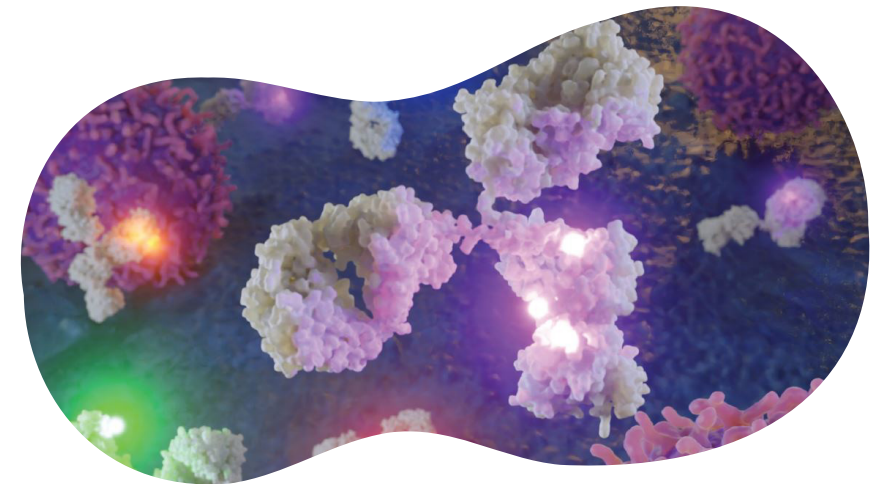


Precision at every step: automated flow cytometry reagent cocktail preparation.

Streamline your laboratory's workflow with cutting-edge technology

In the realm of flow cytometry, the accurate preparation of reagents is crucial for obtaining precise and consistent outcomes. Flow cytometry is a critical tool in research and clinical environments, facilitating in-depth analysis of cell populations by detecting surface and intracellular markers. Preparing the antibody cocktail accurately is crucial for determining the quality of the collected data.



Revolutionize your flow cytometry workflow

Precision

- Reliable dispensing technologies that enable precise volumes
- Minimize dead volume
- Reduce human error and variability in measurements

Standardization

- Consistency in preparation process
- Enhance result reproducibility

Enhance productivity

- Increase walkway time
- Focus on value-added activities
- Higher throughput

Traceability

- Automatic audit trail
- Streamlined data capture

Revvity's solution: precision in automated liquid handling meets high reagent quality

Combine the power of Fontus automation with BioLegend's antibody reagents to streamline your workflow, increase throughput, and achieve consistency in your flow cytometry assay.

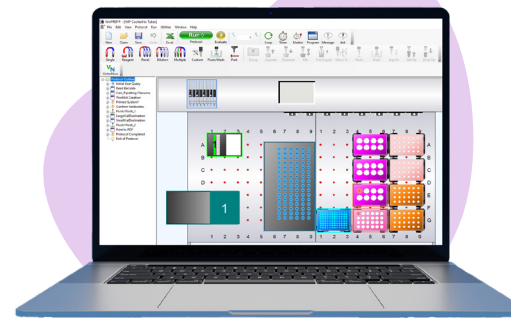
Fontus™ Liquid Handler

- Barcode reader for sample traceability
- Cooling blocks for antibody vial temperature control
- Flexible deck size based on customer's throughput and workflow
- Tinted Plexiglas for light blocking
- Automated handling of antibody reagents and cocktail reagent preparation
- Sub 5% CVs and 1 ul to 5 mL sample working volumes
- Minimal dead volume with liquid level detection
- High throughput with dual pipetting arms



WinPREP™ Software

- Deck optimization with drag and drop feature
- Pre-developed pipetting methods for fast protocol development
- Dedicated run time environment with variables such as number of samples and transfers
- User-friendly interface with pre-programmed labware and procedure template option
- List importing and LIMS connectivity
- 21 CFR Part 11 ready



BioLegend® Reagents

- Wide range of high-quality antibodies
 - Fluorophore conjugated antibodies
 - TotalSeq Antibodies
- Extensive selection of fluorophores to choose from
- Custom conjugations offered
- Custom bottle size option available



Service and support tailored to your needs

Your applications are as individual as you are. That's why we take a consultative approach to every engagement with you. Our global service and support teams comprise dedicated lab- and field-based application specialists who collaborate with you to overcome the unique challenges your applications bring.

Optimizing outcomes: Improved precision, standardization, and enhanced productivity with extensive traceability

The Fontus workstation optimizes antibody cocktail preparation and staining by enhancing precision, standardization, productivity, and traceability:

1. Standardization

- **Automated Protocols:** Easily create and load pre-defined cocktail recipes allowing consistency across batches and experiments.
- **Uniform Staining Procedures:** Integrate your existing SOP's into the system, guaranteeing consistent experiment set up each time which is crucial for comparative analysis.



2. Precision

- **Exact Volume Controls:** The system dispenses precise volumes of antibodies and other reagents with high accuracy, which is crucial for maintaining the integrity and effectiveness of antibody cocktails.
- **Consistent Application:** Automated staining ensures the antibody cocktail is applied consistently across samples, minimizing the variability affecting the assay results.

3. Enhanced Productivity

- **Simultaneous Processing:** Fontus can handle multiple samples simultaneously, dramatically increasing throughput compared to manual processing. This capability is essential in high-volume labs and during peak operation times.
- **Reduced Manual Handling:** By automating the preparation and staining processes, Fontus reduces the time lab personnel need to spend on routine tasks, allowing them to focus on more complex analytical or creative work.

4. Traceability

- **Detailed Record-Keeping:** Each step in the preparation and staining process is automatically logged.
- **Integration with Data Management Systems:** Fontus's ability to integrate with data management systems ensures that all information is easily accessible and traceable. This integration is particularly useful for regulatory compliance and quality control audits.

Fontus workstation streamlines and enhances the antibody cocktail preparation and staining process by focusing on these core aspects. This leads to more reliable and reproducible results, better resource utilization, and improved operational efficiency in research and clinical laboratories.

revvity