



# CRISPR depletion enables sensitive identification of viral and bacterial populations in complex samples.

## CRISPRclean<sup>®</sup> plus stranded total RNA Prep with rRNA depletion

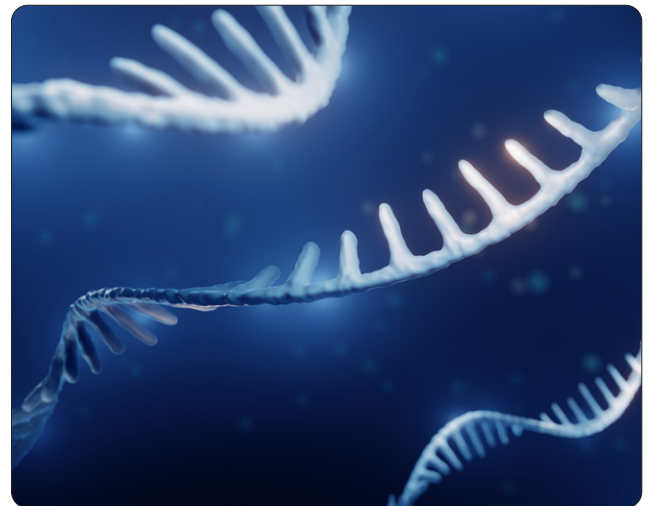
Ideal for analysis of samples containing complex mixtures of eukaryotic and bacterial rRNA

3 to 7-fold increase in coverage of SARS-CoV-2 and other genomes in nasopharyngeal (NSP) samples

Single workflow to detect viral genomic data, microbiome composition, co-infections, and host gene expression

Streamlined Jumpcode<sup>®</sup> CRISPRclean<sup>®</sup> workflow: stranded total RNA library prep with ribodepletion

Automated on the Sciclone<sup>®</sup> G3 NGSx iQ<sup>™</sup> liquid handler



Jumpcode Genomics' CRISPRclean® Plus Stranded Total RNA Prep with rRNA Depletion (Human, Mouse, Rat, Pan Bacteria) kit is an optimized directional RNA library prep leveraging a CRISPR-powered depletion workflow that increases sensitivity to detect lower expressing and biologically relevant transcripts from complex samples. An optimized workflow with 9-hour total assay time and 3.5 hours of hands-on time (HOT) is made up of 7 simple steps with multiple safe stopping points.

Powered by CRISPR-Cas9, ribodepletion is highly efficient and programmed to cut ribosomal RNA from human sequences (5S, 5.8S, 18S, 28S, 45S (precursor), mitochondrial 12S and 16S sequences), or 212 bacterial species from all phyla (5S, 16S, and 23S rRNA sequences).

Improve your discovery of high-value and biologically interesting transcripts with Jumpcode Genomics' CRISPRclean® Plus technology.

### Fully automated protocol

A tested method is available to automate Jumpcode Genomics' CRISPRclean® Plus Stranded Total RNA Prep with rRNA Depletion (Human, Mouse, Rat, Pan Bacteria) kit on the Revvity Sciclone® G3 NGSx iQ™ liquid handler.



### Multiplexing with UDI barcodes for Illumina® platforms

Up to 384 unique dual index (UDI) barcodes are available for multiplexing CRISPRclean® Plus Stranded Total RNA Prep with rRNA Depletion (Human, Mouse, Rat, Pan Bacteria) libraries.

#### ■ NEXTFLEX® RNA-seq 2.0 Unique Dual Index Barcodes (1-384)

This set of 384 UDI barcodes is provided at a concentration optimized for use with Jumpcode Genomics' CRISPRclean® Plus Stranded Total RNA Prep with rRNA Depletion (Human, Mouse, Rat, Pan Bacteria) kit.

Key specifications	
Assay Time	9 hours
Application	Infectious disease surveillance
Hands-on Time	3.5 hours
Sample Types	Complex samples with mixtures of eukaryotes & prokaryotes including nasopharyngeal, saliva, gut, skin, & fecal
Input Quantity	5 - 100 ng total RNA
Depletion Technology	CRISPR-Cas9 mediated
Strand Compatibility	> 98% directional and strand specific
Compatible Species	Human, mouse, rat, and 212 bacterial species
Designed to deplete	Human 5S, 5.8S, 18S and 28S, 45S rRNA precursor, mitochondrial 12S and 16S rRNA genes. 212 bacteria representing all phyla: 5S, 16S, and 23S rRNA gene.
Multiplex	Up to 1536 UDI adapter barcodes

**NOVA-5229960** CRISPRclean Plus Stranded Total RNA Prep with rRNA Depletion (24 rxn)

To order products online: [www.revvity.com](http://www.revvity.com)  
 To request a quote or place an order: [www.revvity.com/contact-us](http://www.revvity.com/contact-us)  
 For technical support: [ngs@revvity.com](mailto:ngs@revvity.com)



An authorized distributor

Revvity, Inc.  
 940 Winter Street  
 Waltham, MA 02451  
 USA  
[www.revvity.com](http://www.revvity.com)