



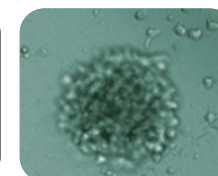
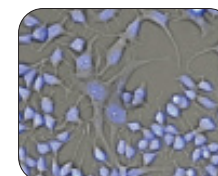
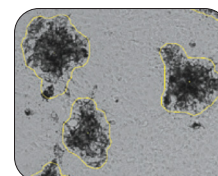
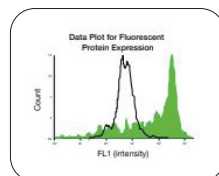
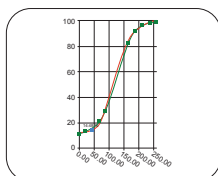
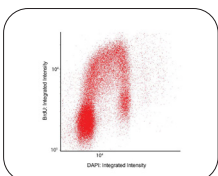
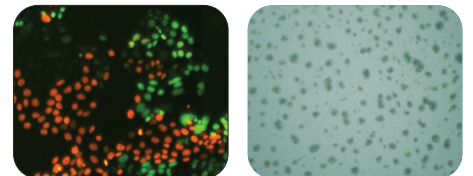
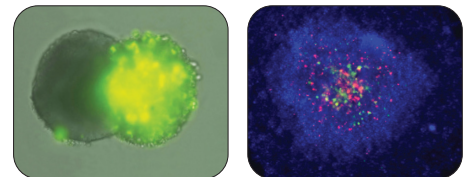
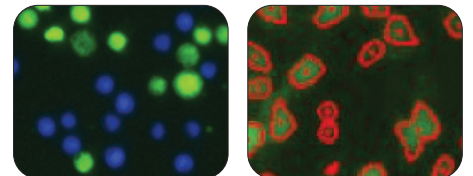
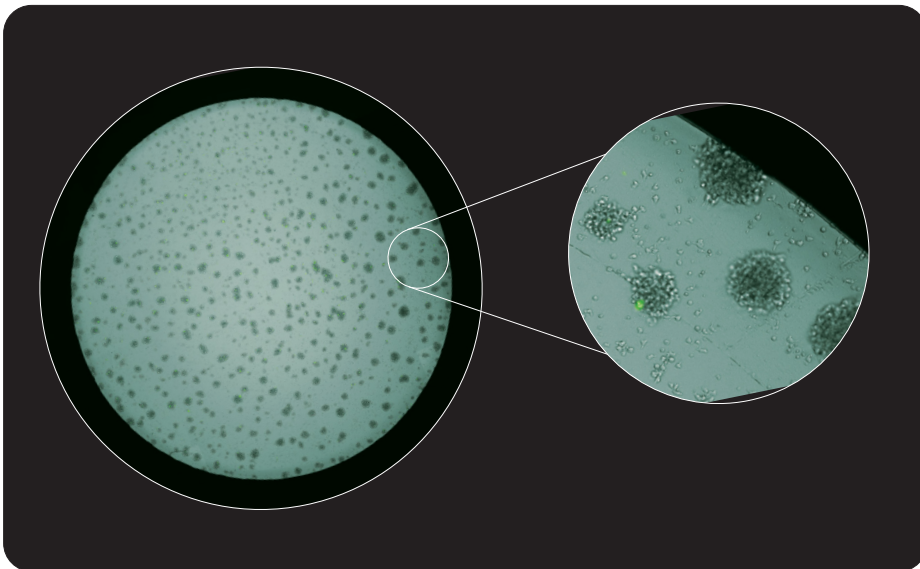
revvity

Every cell. Every well.

Celigo™ image cytometer

Whole-well image analysis for adherent and suspension cells

- Oncology
- Immuno-oncology
- Cell line development and biologics production
- 3D tumor spheroid modeling
- Stem cell research
- Virology assays



Oncology

- Apoptosis
- Cell cycle
- Cell viability
- DNA synthesis
- Cytotoxicity
- Cell migration
- Cell morphology
- Immunophenotyping
- Metabolism
- Wound healing
- Chemotaxis

Stem cell research

- iPS cell line generation
- Embryoid body morphology
- Stem cell marker analysis

Cell line development and biologics production

- Single cell detection
- Transfection / Transduction efficiency
- CRISPR fluorescent reporter monitoring
- Single cell to single colony monitoring
- Growth tracking
- Cell secretion
- Hybridoma screening
- Routine quality control

Virology assays

- Foci and plaque counting
- Antibody neutralization
- Hemagglutination assay

3D tumor spheroid modeling

- Growth tracking
- Growth inhibition
- Apoptosis / Viability
- Invasion / Migration
- Patient derived organoids (PDOs)

Immuno-oncology

- Direct cell-mediated cytotoxicity
- Antibody-dependent cell-mediated cytotoxicity (ADCC)
- Complement-dependent cytotoxicity
- Antibody-mediated cytotoxicity

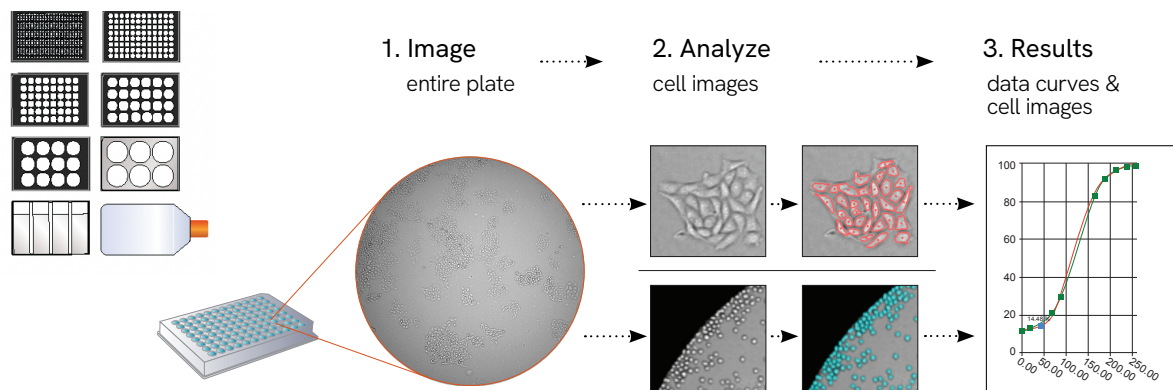


Plate compatibility	6, 12, 24, 48, 96, 384, 1536 well plates (black, white and clear well plates) / T-25 and T-75 flasks. Slides and cell array plate profiles available upon request. Holders/adapters for 60 mm dish, and slide holders that fit up to 4 slides also available.																													
Software	Proprietary image acquisition and processing software, Powerful analysis software/Computer workstation Microsoft Windows																													
Illumination / optics	<ul style="list-style-type: none"> 1 LED-based enhanced bright field imaging channel with uniform well illumination 4 LED-based fluorescent channels Proprietary F-theta lens with superior well edge-to-edge contrast Galvanometric mirrors for fast imaging of large areas Large chip CCD camera (2024x2024 pixels) 1, 2, 4 or 8 um/pixel resolution 																													
Fluorescent channels	<table border="1"> <thead> <tr> <th>Channel</th> <th>Excitation</th> <th>Dichroic</th> <th>Emission</th> <th>Example Dyes</th> </tr> </thead> <tbody> <tr> <td>Blue</td> <td>377/50</td> <td>409</td> <td>470/22</td> <td>Hoechst, DAPI</td> </tr> <tr> <td>Green</td> <td>483/32</td> <td>506</td> <td>536/40</td> <td>FITC, Calcein, GFP, Alexa Fluor® 488</td> </tr> <tr> <td>Red</td> <td>531/40</td> <td>593</td> <td>629/53</td> <td>R-PE, PI, Texas Red, Alexa Fluor® 568</td> </tr> <tr> <td>Far-Red</td> <td>628/40</td> <td>660</td> <td>688/31</td> <td>DRAQ5®, Alexa Fluor® 647</td> </tr> </tbody> </table>					Channel	Excitation	Dichroic	Emission	Example Dyes	Blue	377/50	409	470/22	Hoechst, DAPI	Green	483/32	506	536/40	FITC, Calcein, GFP, Alexa Fluor® 488	Red	531/40	593	629/53	R-PE, PI, Texas Red, Alexa Fluor® 568	Far-Red	628/40	660	688/31	DRAQ5®, Alexa Fluor® 647
Channel	Excitation	Dichroic	Emission	Example Dyes																										
Blue	377/50	409	470/22	Hoechst, DAPI																										
Green	483/32	506	536/40	FITC, Calcein, GFP, Alexa Fluor® 488																										
Red	531/40	593	629/53	R-PE, PI, Texas Red, Alexa Fluor® 568																										
Far-Red	628/40	660	688/31	DRAQ5®, Alexa Fluor® 647																										
High-speed imaging	Less than 2 minutes per 384-well plate																													
Weight & dimensions	Dimensions: 19.5" W x 16"H x 24"D (49.5cm x40cm x 61cm) Weight: 117 lbs. (53 kg)																													
Focusing modes	Hardware-based auto focus, image-based auto focus, manual focus																													

