

# Automation pipette tips and consumables.

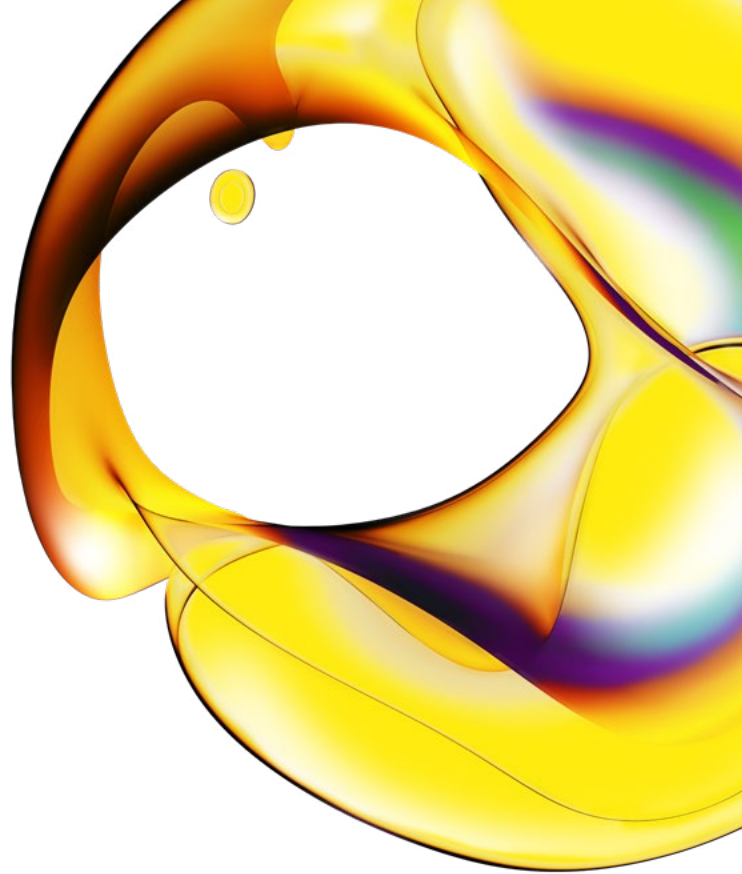


revvity

**Quality-assured disposable pipette tips**

For research use only. Not for use in diagnostic procedures.

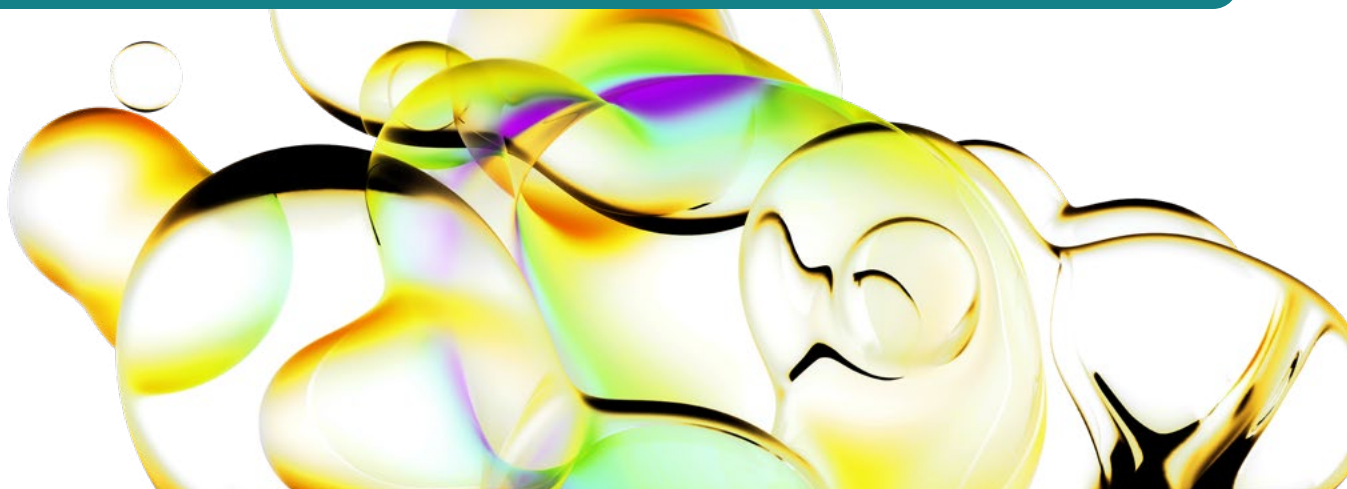
Designed,  
validated, and  
approved for  
compatibility  
with Revvity  
liquid handlers.



All Revvity pipette tips have been carefully designed and manufactured to stringent standards of quality to ensure maximum reliability and reproducibility. Our disposable pipette tips are engineered to perfectly integrate with Revvity liquid handlers for highly reliable performance, every time.

**Other features and benefits:**

- All Revvity pipette tips are made from medical grade, 100% virgin polypropylene
- All Revvity pipette tips are “PCR Clean” and are certified free from bioburden, human DNA, pyrogens, DNase, and RNase.
- All boxed style racks are SBS format



The types of consumable tips we offer have four distinct properties:



### Filter

Filter pipette tips use a membrane which functions as a barrier between the pipetting head and the liquid it is aspirating and dispensing. The filters ensure no cross-contamination is possible from aerosols and reduces overall aerosol intake into the pipetting head.



### Conductive

Conductive pipette tips are manufactured with a small amount of carbon infused with the polypropylene to enable an electric current. This allows the liquid handling workstation to detect the surface of liquids and pipette from a defined depth relative to the surface of the liquid.



### Sterilized

All Revvity sterilized pipette tips have been sterilized using irradiation to the current regulatory maximum of 10<sup>-6</sup> SAL. This is equivalent to the sterility assurance level (SAL) required by the medical device industry and ensures a product free from bioburden, human DNA, pyrogens, DNase, and RNase.



### Wide Bore

Wide bore pipette tips have a distinct wide shape at the end of the pipette tip. These tips are ideal for working with cellular matrices, genomic DNA, and other viscous sample types.

## Rack format



### Boxed

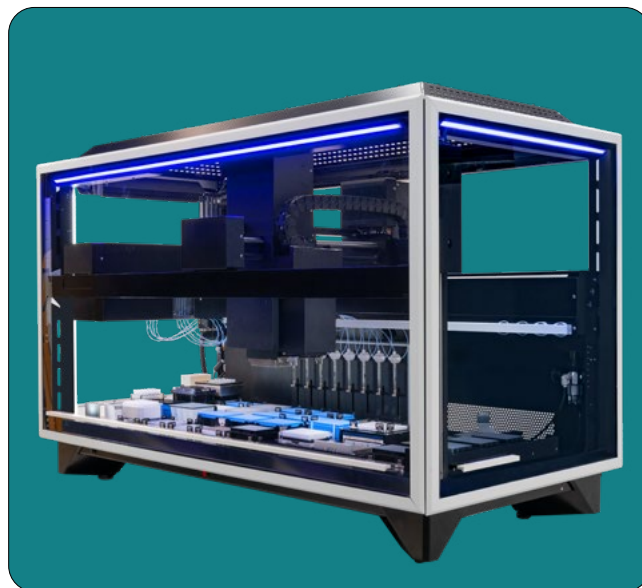
SBS style racks that can be moved around the deck. Better for flexibility.



### Hanging

Tray style rack that hangs on the Hanging Tip Holder. Uses less plastic.

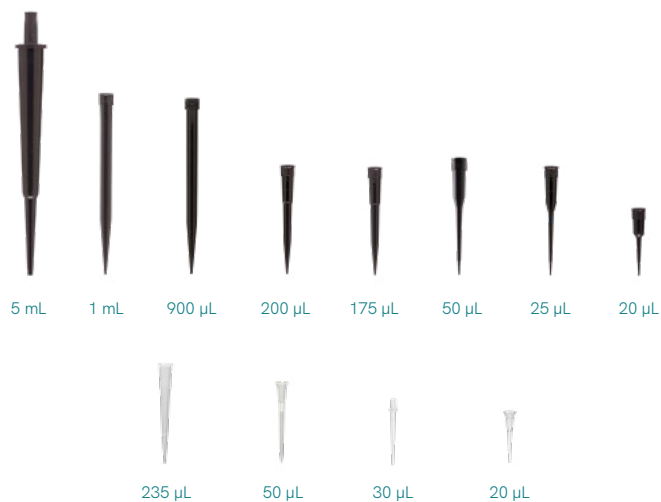
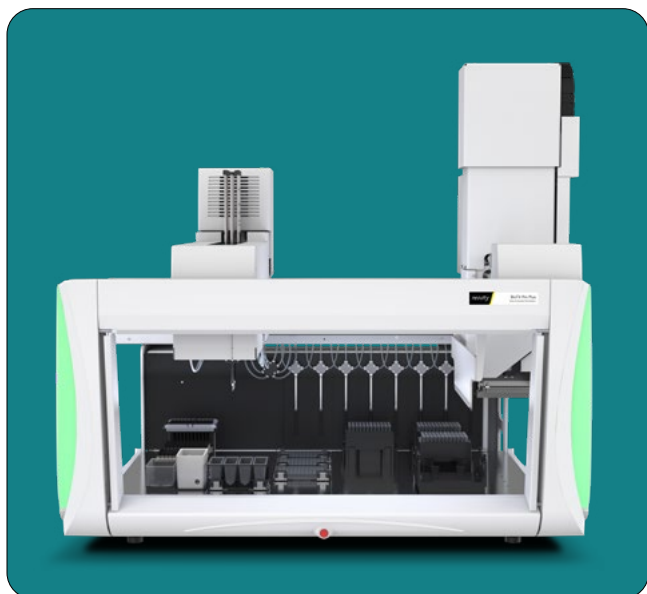
## Fontus™ workstation pipette tips



Part Number	Pipetting Module	Volume (µL)	Filter	Sterilized	Conductive	Color	Wide Bore	Tips/case	Rack format
6000679	Varispan	20	N	N	Y	Black	N	960	Boxed
6000689	Varispan	25	Y	Y	N	Clear	N	960	Boxed
6000691	Varispan	25	Y	Y	Y	Black	N	960	Boxed
6001264	Varispan	50	N	N	Y	Black	N	960	Boxed
6000685	Varispan	175	Y	Y	N	Clear	N	960	Boxed
6000687	Varispan	175	Y	Y	Y	Black	N	960	Boxed
6001250	Varispan	200	N	Y	Y	Black	N	960	Boxed
6001200	Varispan	900	Y	Y	Y	Black	Y	960	Hanging
6001256	Varispan	900	Y	Y	Y	Black	N	960	Hanging
6001262	Varispan	900	Y	Y	N	Clear	N	960	Hanging
6001258**	Varispan	1000	Y	N	Y	Black	N	2,304	Hanging
6001604	Varispan	1000	N	N	Y	Black	N	2,304	Hanging
6902016	Varispan	5000	Y	Y	Y	Black	N	240	Hanging
105645	Main Array 96	35	Y	Y	N	Clear	N	960	Boxed
105642	Main Array 96	50	N	Y	N	Clear	N	960	Boxed
105643	Main Array 96	50	N	N	N	Clear	N	2,880	Nested*
111624	Main Array 96	80	Y	Y	N	Clear	N	960	Boxed
109080	Main Array 96	100	N	Y	N	Clear	N	960	Boxed
111426	Main Array 96	150	Y	Y	N	Clear	N	960	Boxed
105649	Main Array 96	200	N	N	N	Clear	N	2,880	Nested*
109081	Main Array 96	200	N	N	N	Clear	N	960	Boxed
109082	Main Array 96	200	N	Y	N	Clear	N	960	Nested*
6001640	Main Array 384	25	N	N	N	Clear	N	3,840	Boxed

\*Nested: Tip trays are stacked. This reduces plastic waste and enables use of the Twister Robot.  
 \*\*High filter position requires short stinger option.

## JANUS® G3 workstation tips



Part Number	Pipetting Module	Volume (µL)	Filter	Sterilized	Conductive	Color	Wide Bore	Tips/case	Rack format
6000679	Varispan	20	N	N	Y	Black	N	960	Boxed
6000689	Varispan	25	Y	Y	N	Clear	N	960	Boxed
6000691	Varispan	25	Y	Y	Y	Black	N	960	Boxed
6001264	Varispan	50	N	N	Y	Black	N	960	Boxed
6000685	Varispan	175	Y	Y	N	Clear	N	960	Boxed
6000687	Varispan	175	Y	Y	Y	Black	N	960	Boxed
6001250	Varispan	200	N	Y	Y	Black	N	960	Boxed
6001200	Varispan	900	Y	Y	Y	Black	Y	960	Hanging
6001256	Varispan	900	Y	Y	Y	Black	N	960	Hanging
6001262	Varispan	900	Y	Y	N	Clear	N	960	Hanging
6001258**	Varispan	1000	Y	N	Y	Black	N	2,304	Hanging
6001604	Varispan	1000	N	N	Y	Black	N	2,304	Hanging
6902016	Varispan	5000	Y	Y	Y	Black	N	240	Hanging
6001291	MDT - P50 Head	20	N	Y	N	Clear	N	4,800	Boxed
6001620	MDT - P30 Head	30	Y	Y	N	Clear	N	19,200	Boxed
6001621	MDT - P30 Head	30	N	N	N	Clear	N	19,200	Boxed
6001637	MDT - P30 Head	30	Y	Y	N	Clear	N	4,800	Boxed
6001293	MDT - P50 Head	50	N	N	N	Clear	N	4,800	Boxed
6001302	MDT - P50 Head	50	Y	Y	N	Clear	N	4,800	Boxed
6073643	MDT -P235 Head	235	Y	Y	N	Clear	N	4,800	Boxed
6073603	MDT -P235 Head	235	N	N	N	Clear	N	4,800	Boxed

\*\*High filter position requires short stinger option.

## Sciclone® and Zephyr® workstation tips



200/150  $\mu$ L



100/80  $\mu$ L



50/35  $\mu$ L

Part Number	Pipetting Module	Volume ( $\mu$ L)	Filter	Sterilized	Conductive	Color	Wide Bore	Tips/case	Rack format
105645	Main Array 96	35	Y	Y	N	Clear	N	960	Boxed
105642	Main Array 96	50	N	Y	N	Clear	N	960	Boxed
105643	Main Array 96	50	N	N	N	Clear	N	2,880	Nested
111624	Main Array 96	80	Y	Y	N	Clear	N	960	Boxed
109080	Main Array 96	100	N	Y	N	Clear	N	960	Boxed
111426	Main Array 96	150	Y	Y	N	Clear	N	960	Boxed
105649	Main Array 96	200	N	N	N	Clear	N	2,880	Nested*
109081	Main Array 96	200	N	N	N	Clear	N	960	Boxed
109082	Main Array 96	200	N	Y	N	Clear	N	960	Boxed
6001640	Main Array 384	25	N	N	N	Clear	N	3,840	Boxed

\*Nested: Tip trays are stacked. This reduces plastic waste and enables use of the Twister Robot.

## Reagent troughs

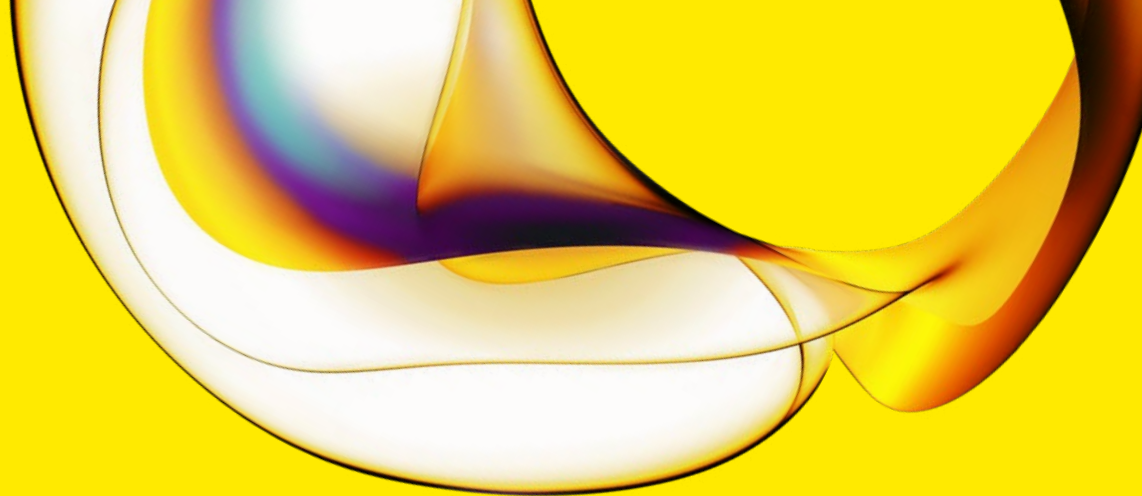


Reagent troughs for use with 4-tip instruments



Reagent troughs for use with 8-tip instruments

Part Number	Description	Compatible Arm	Volume (mL)	Quantity
6000661	Reagent Trough	8-tip	double 25	25
6000662	Reagent Trough	8-tip	double 25	50
6000663	Reagent Trough	8-tip	150	25
6000664	Reagent Trough	8-tip	150	50
6008103	Reagent Trough	8-tip	60	25
6008104	Reagent Trough	8-tip	60	50
6000665	Reagent Trough Starter Package, with lids	8-tip	25	4
			100	4
CLS151508	Reagent Trough, Tapered	8-tip	60	80
6000581	Reagent Trough	4-tip	60	25
6000582	Reagent Trough	4-tip	60	50
6000583	Reagent Trough	4-tip	150	25
6000584	Reagent Trough	4-tip	150	50
6000577	Reagent Trough	4-tip	33	25
6000578	Reagent Trough	4-tip	33	50
6000585	Reagent Trough Starter Package	4-tip	33	6
			60	4
			150	2



[www.revivity.com](http://www.revivity.com)

revivity

**Revvity, Inc.**  
940 Winter Street  
Waltham, MA 02451 USA  
[www.revivity.com](http://www.revivity.com)

For a complete listing of our global offices, visit [www.revivity.com](http://www.revivity.com)  
Copyright ©2023, Revvity, Inc. All rights reserved.

AG012310\_24\_BR v5-2024-03-05