

3D In Vitro culture of the neuronal cell line SH-SY5Y is sustained in GrowDex®

Joseph Lloyd, Jenna James, Matt Dunn, Daniel Merryweather, Rosemary Fricker, Paul Roach

Institute for Science and Technology in Medicine, Keele University, United Kingdom

INTRODUCTION

Culture of cells *in vitro* has historically been carried out in two-dimensional (2D) format, in monolayers or sometimes aggregates/spheroids. In recent years it has now become widely accepted that cells respond differently to this 2D environment than compared to the three-dimensional (3D) associations they encounter in normal tissue. Various methods have been utilised to expand methods of *in vitro* culture into 3D, with hydrogel networks being likely the most widely used. Various *in vitro* models have been established to replicate many different organ and tissue types, although the central nervous system remains a challenge due to the many different intercommunicating cell types and the dependence on complex cytoarchitecture for normal function. The need to develop complex functional models, particularly using human-relevant tissues, will be highly relevant for establishing a better understanding of neurological dysfunction and an enabling technology for clinical intervention. Culturing within a 3D environment, allowing and supporting inter-communication between various neural cell types, is essential in this effort. Here we establish methodologies for 3D cell culture of the common neuronal cell line SH-SY5Y within the GrowDex® hydrogel to provide a more biomimetic set of environmental cues with which to promote cell migration and neurite outgrowth, whilst sustaining the viability of the population. We have had similar success with primary cortical (E16) neurons although those details are not covered in this application note.

MATERIALS AND METHODS

- Initial assays determined that dilution of the hydrogels using media produced a significantly more stable matrix, resulting in reduced loss of cells during media changes, fixing and staining when compared to gels diluted using PBS.
- Cells were either pre-mixed with the gel solution else seeded after gelation.
- Each well of a 96-well plate was seeded with 90,000 SH-SY5Y cells.
- Wells were filled with either GrowDex or one of three commonly used peptide hydrogels for comparison (these are commercially available peptides designed to support neuronal culture) diluted to 1 % w/v with DMEM-F12 cell culture media containing 10% v/v human serum, 1% L-Glutamine, and 1% pen/strep and allowed to set at 37°C for 24 h.
- Media was changed every second day for seven days to sustain propagation of the population.
- Each well was then either washed with PBS and stained using a live/dead assay or fixed with formaldehyde and stained using the nuclear stain DAPI and the fluorescent recombinant anti-β-tubulin antibody E7.

RESULTS

Fluorescence imaging revealed that two of the peptide hydrogels examined had not supported cell growth owing to dissolution of the hydrogel under the testing regime. GrowDex and the one remaining peptide gel did retain structure throughout the evaluation and were shown to support cell growth. GrowDex maintained an evenly distributed cell population (Fig. 1) which also indicated cells had migrated throughout the hydrogel. The remaining peptide gel, whilst sustaining high cell viability (Fig. 2), demonstrated minimal neurite outgrowth compared to those cells cultured in GrowDex.

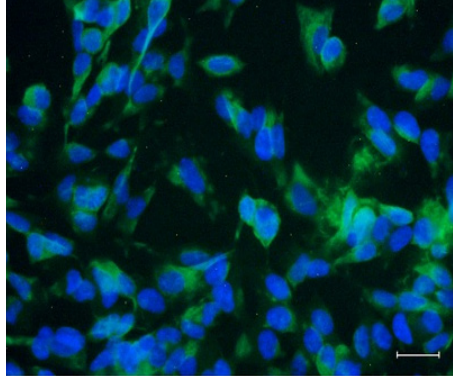


Figure 1. Image of SH-SY5Y cells encapsulated within GrowDex stained with DAPI (blue) and the anti- β -tubulin fluorescent antibody E7 (green), day 7. Scale bar 10 μ m.

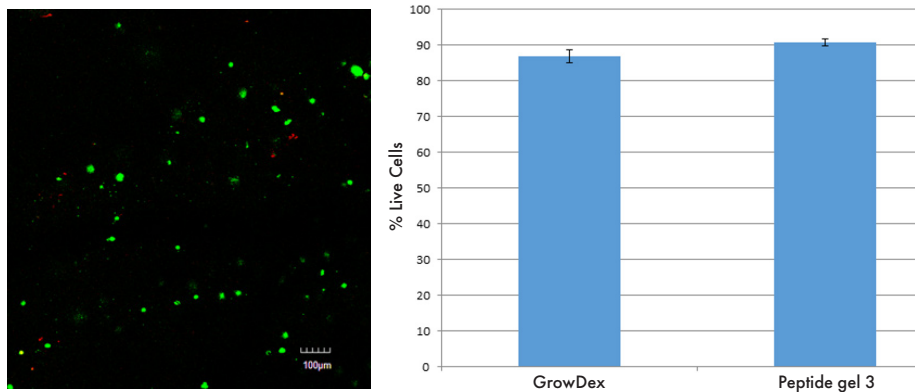


Figure 2. Live/dead staining of SH-SY5Y cells with 1% v/w GrowDex hydrogel 24 h after seeding. The results of the assay are compared to the same data generated using the single peptide hydrogel that was able to maintain the cell culture. Error bars indicate a single standard deviation.

CONCLUSIONS

Our results indicate that a 1% w/v GrowDex hydrogel is able to sustain the three dimensional culture of SH-SY5Y cells, producing an evenly distributed population within a 96-well plate format. Cell viability was high and neurite outgrowth was also observed in the 3D format. Additionally it was noticed that the consistency of GrowDex was more robust when added to media via a syringe rather than vice versa which allowed for more thorough mixing without the formation of bubbles.



UPM Biomedicals
Alvar Aallon katu 1
P.O. Box 380
00101 Helsinki, Finland
biomedicals@upm.com
www.upmbiomedicals.com

www.upm.com

To order products online: www.revivity.com

To request a quote or place an order: www.revivity.com/contact-us

For technical support: LS.ReagentsTechSupport@revivity.com

revivity

An authorized distributor

Revvity, Inc.
940 Winter Street
Waltham, MA 02451
USA
www.revivity.com