

AlphaLISA® SureFire® Ultra™

Human p300 Total Detection Kit

Product number: ALSU-TP300-A500, ALSU-TP300-A10K,
ALSU-TP300-A50K, ALSU-TP300-A-HV



Kit specificity:

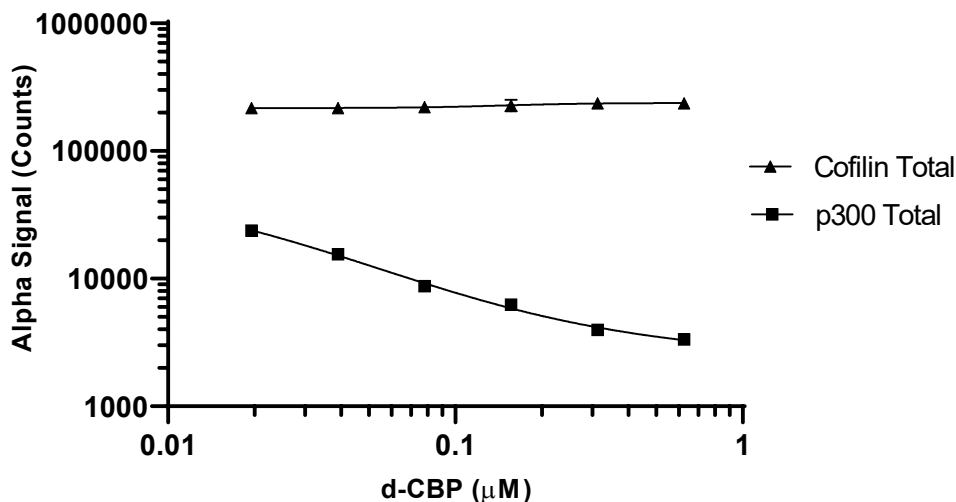
This assay kit contains antibodies which recognize distinct epitopes on p300. The protein detected by this kit corresponds to UniProt ID Q09472. p300 is also known as EP300 and Histone acetyltransferase p300. These antibodies recognize p300 of human origin. Other species should be tested on a case-by-case basis.

Control lysate information:

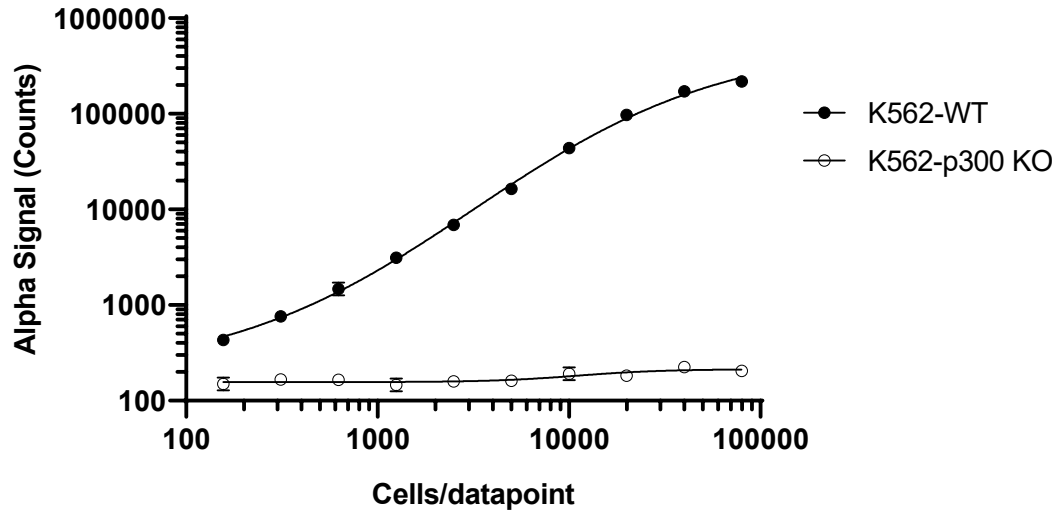
Positive Control Lysate: Prepared from K-562 cells cultured in 10% FBS containing media. Cells were washed in HBSS + 0.1% BSA, then spun down at 300 RCF for 5 minutes and lysed in SureFire Lysis Buffer at 5×10^6 cells/mL.

Representative data

Data obtained with a 2-plate, 2-incubation protocol. HeLa cells were plated at 40K cells/well in a 96 well plate and incubated overnight. Cells were treated with d-CBP prepared in SF-MEM at the indicated concentrations for 2 hours. Cells were lysed with Lysis Buffer and assayed separately for Total p300 and Total Cofilin using respective SureFire Ultra kits. Equivalent to approximately 4,000 cells/datapoint for Total p300 or 800 cells/datapoint for Total Cofilin.



Data obtained with a 2-plate, 2-incubation protocol. A cell density gradient of K562-WT or K562-p300 KO cells beginning at 10M cells/mL in HBSS, was prepared in a 96 well plate. Cells were lysed with 5x Lysis Buffer and assayed for Total p300 using the respective *SureFire Ultra* kit. Top point is equivalent to 80,000 cells/datapoint.



The information provided in this document is for reference purposes only and may not be all-inclusive. Revvity, Inc., its subsidiaries, and/or affiliates (collectively, "Revvity") do not assume liability for the accuracy or completeness of the information contained herein. Users should exercise caution when handling materials as they may present unknown hazards. Revvity shall not be liable for any damages or losses resulting from handling or contact with the product, as Revvity cannot control actual methods, volumes, or conditions of use. Users are responsible for ensuring the product's suitability for their specific application. REVVITY EXPRESSLY DISCLAIMS ALL WARRANTIES, INCLUDING WARRANTIES OF MERCHANTABILITY OR FITNESS FOR A PARTICULAR PURPOSE, REGARDLESS OF WHETHER ORAL OR WRITTEN, EXPRESS OR IMPLIED, ALLEGEDLY ARISING FROM ANY USAGE OF ANY TRADE OR ANY COURSE OF DEALING, IN CONNECTION WITH THE USE OF INFORMATION CONTAINED HEREIN OR THE PRODUCT ITSELF"

