

AlphaLISA® SureFire® Ultra™

Human and Mouse Wee1 Total Detection Kit

Product number: ALSU-TWEE-A500, ALSU-TWEE-A10K,
ALSU-TWEE-A50K, ALSU-TWEE-A-HV



Kit specificity:

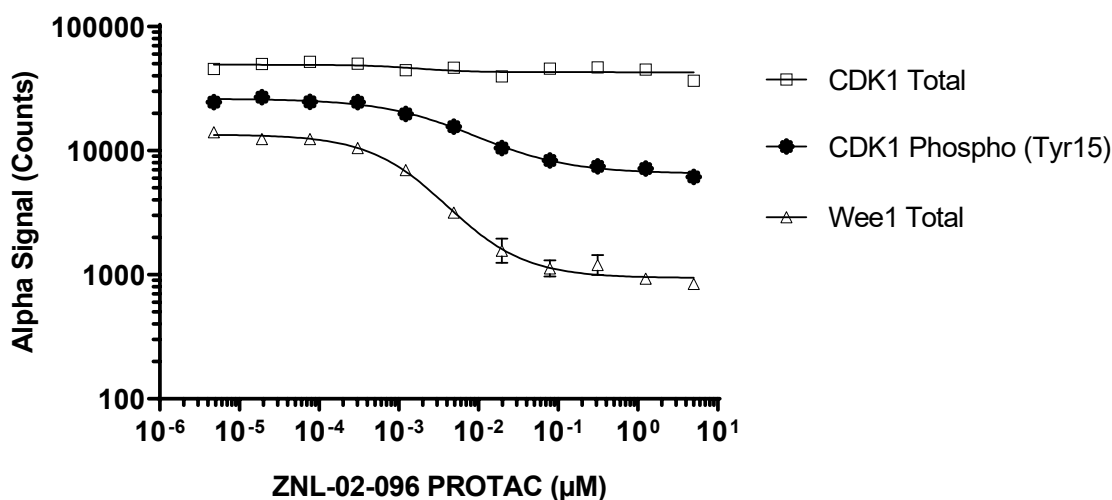
This assay kit contains antibodies which recognize distinct epitopes on Wee1. The protein detected by this kit corresponds to UniProt ID P30291. Wee1 is also known as Wee1A kinase and Wee1-like protein kinase. These antibodies recognize Wee1 of human and mouse origin. Other species should be tested on a case-by-case basis.

Control lysate information:

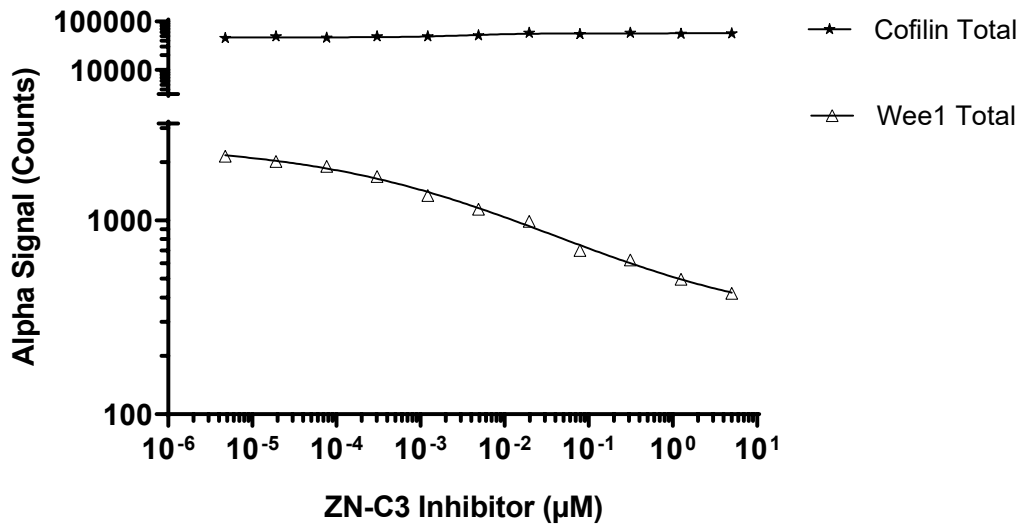
Positive Control Lysate: Prepared from Jurkat cells cultured in 10% FBS containing media. Cells were harvested and washed in HBSS + 0.1% BSA, then spun down at 300 RCF for 5 minutes and lysed in Lysis Buffer at 4 x 10⁶ cells/mL.

Representative data

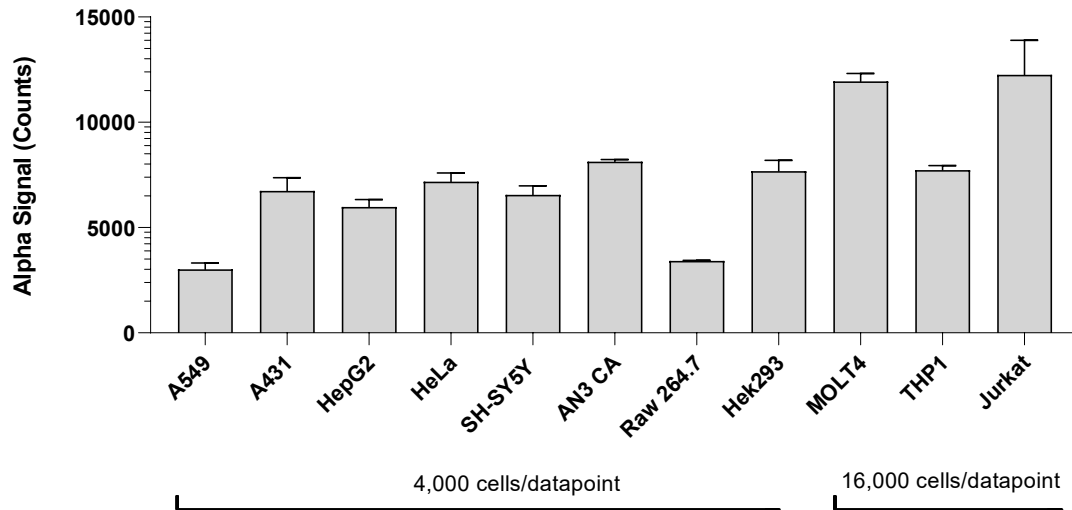
Data obtained with a 2-plate, 2-incubation protocol. Jurkat cells were prepared in HBSS + 0.1% BSA and seeded at 200K/well in a 96 well plate. Cells were treated with a dose range of ZNL-02-096 PROTAC for 2 hours. Cells were lysed with Lysis Buffer and assayed separately for Wee1 Total, CDK1 Phospho (Tyr15) and Total using respective SureFire Ultra kits. Equivalent to approximately 8,000 cells (Wee1 Total) or 800 cells/datapoint (CDK1 p-Tyr15 and Total).



Data obtained with a 2-plate, 2-incubation protocol. A549 cells were seeded at 40K/well in a 96 well plate and incubated overnight. Cells were treated with ZN-C3 inhibitor for 2 hours at the indicated concentrations. Cells were lysed with Lysis Buffer and assayed separately for Total Wee1 and Total Cofilin using respective *SureFire Ultra* kits. Equivalent to approximately 4,000 cells (Wee1 Total) or 400 cells/datapoint (Cofilin Total).



Data obtained for Wee1 Total from screening various lysates prepared from cells lysed in *SureFire Ultra* Lysis Buffer. Approximate number of cells/datapoint is indicated for the various cell lines.



The information provided in this document is for reference purposes only and may not be all-inclusive. Revvity, Inc., its subsidiaries, and/or affiliates (collectively, "Revvity") do not assume liability for the accuracy or completeness of the information contained herein. Users should exercise caution when handling materials as they may present unknown hazards. Revvity shall not be liable for any damages or losses resulting from handling or contact with the product, as Revvity cannot control actual methods, volumes, or conditions of use. Users are responsible for ensuring the product's suitability for their specific application. REVVITY EXPRESSLY DISCLAIMS ALL WARRANTIES, INCLUDING WARRANTIES OF MERCHANTABILITY OR FITNESS FOR A PARTICULAR PURPOSE, REGARDLESS OF WHETHER ORAL OR WRITTEN, EXPRESS OR IMPLIED, ALLEGEDLY ARISING FROM ANY USAGE OF ANY TRADE OR ANY COURSE OF DEALING, IN CONNECTION WITH THE USE OF INFORMATION CONTAINED HEREIN OR THE PRODUCT ITSELF"

