

AlphaLISA® SureFire® Ultra™

Human and Mouse SMAD2 Total Detection Kit

Product number: ALSU-TSM2-A500, ALSU-TSM2-A10K,
 ALSU-TSM2-A50K, ALSU-TSM2-A-HV



Kit specificity:

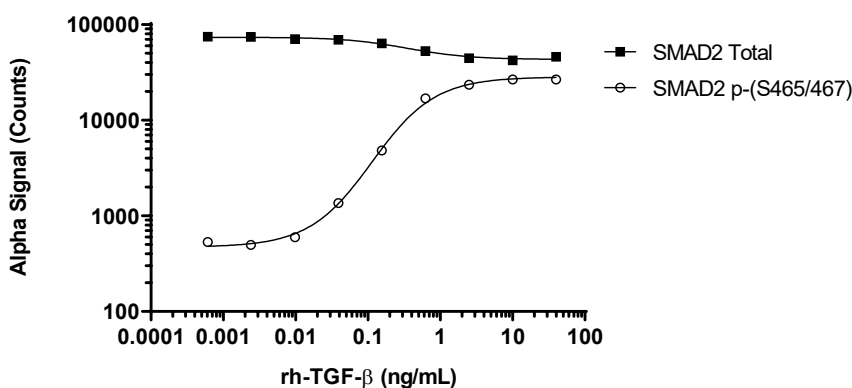
This assay kit contains antibodies which recognize distinct epitopes on SMAD2. The protein detected by this kit corresponds to UniProt ID Q15796. SMAD2 is also known as Mothers against decapentaplegic homolog 2, JV18-1, Mad-related protein 2 and MAD homolog 2. These antibodies recognize SMAD2 of human and mouse origin. Other species should be tested on a case-by-case basis.

Control lysate information:

Positive Control Lysate: Prepared from RAW 264.7 cells, cultured to confluence in T175 flasks in 10% FBS containing media, then treated with 50 ng/mL rh-TGF-β for 90 minutes and lysed with 6 mL of Lysis Buffer.

Representative data

Data obtained with a 2-plate, 2-incubation protocol. RAW 264.7 cells were seeded at 20K cells/well in a 96 well plate and incubated for 48 hours. Cells were serum starved for 60 minutes then treated with rh-TGF-β at the indicated concentrations for 90 minutes. Cells were lysed with Lysis Buffer and assayed separately for Phospho (Ser465/467) and Total SMAD2 using respective *SureFire Ultra* kits. Equivalent to approximately 2,000 cells/datapoint.



The information provided in this document is for reference purposes only and may not be all-inclusive. Revvity, Inc., its subsidiaries, and/or affiliates (collectively, "Revvity") do not assume liability for the accuracy or completeness of the information contained herein. Users should exercise caution when handling materials as they may present unknown hazards. Revvity shall not be liable for any damages or losses resulting from handling or contact with the product, as Revvity cannot control actual methods, volumes, or conditions of use. Users are responsible for ensuring the product's suitability for their specific application. REVVITY EXPRESSLY DISCLAIMS ALL WARRANTIES, INCLUDING WARRANTIES OF MERCHANTABILITY OR FITNESS FOR A PARTICULAR PURPOSE, REGARDLESS OF WHETHER ORAL OR WRITTEN, EXPRESS OR IMPLIED, ALLEGEDLY ARISING FROM ANY USAGE OF ANY TRADE OR ANY COURSE OF DEALING, IN CONNECTION WITH THE USE OF INFORMATION CONTAINED HEREIN OR THE PRODUCT ITSELF"