

AlphaLISA® SureFire® Ultra™ Terbium

Human and Mouse p-SMAD1 (Ser463/465) Detection Kit

Product number: TBSU-PSM1-A500, TBSU-PSM1-A10K
 TBSU-PSM1-A50K, TBSU-PSM1-A-HV



Kit specificity:

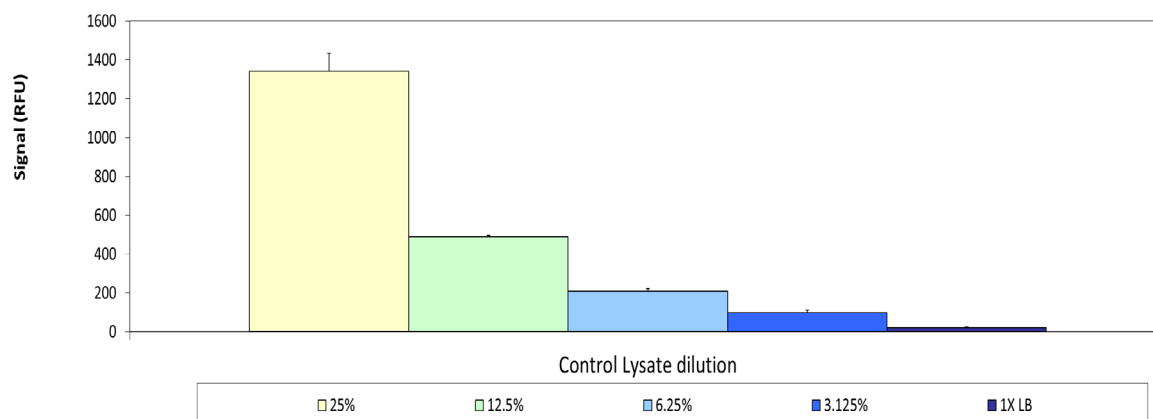
This assay kit contains antibodies which recognize the Phospho-Ser463/465 epitope and a distal epitope on SMAD1. The protein detected by this kit corresponds to UniProt ID Q15797. SMAD1 is also known as Mothers against decapentaplegic homolog 1, MAD homolog 1, JV4-1 and Transforming growth factor-beta-signaling protein 1. These antibodies recognize SMAD1 of human and mouse origin. Other species should be tested on a case-by-case basis.

Control lysate information:

Positive Control Lysate: Prepared from C2C12 cells cultured to confluence in T175 flasks in 10% FBS containing media, treated with 50 ng/mL rhBMP4 for 30 minutes and lysed with 12 mL of Lysis Buffer.

Representative data

Data obtained from the positive control lysate diluted in Lysis Buffer. Samples were assayed for Phospho SMAD1(Ser463/465) using the Terbium SureFire Ultra kit.



The information provided in this document is for reference purposes only and may not be all-inclusive. Revvity, Inc., its subsidiaries, and/or affiliates (collectively, "Revvity") do not assume liability for the accuracy or completeness of the information contained herein. Users should exercise caution when handling materials as they may present unknown hazards. Revvity shall not be liable for any damages or losses resulting from handling or contact with the product, as Revvity cannot control actual methods, volumes, or conditions of use. Users are responsible for ensuring the product's suitability for their specific application. REVVITY EXPRESSLY DISCLAIMS ALL WARRANTIES, INCLUDING WARRANTIES OF MERCHANTABILITY OR FITNESS FOR A PARTICULAR PURPOSE, REGARDLESS OF WHETHER ORAL OR WRITTEN, EXPRESS OR IMPLIED, ALLEGEDLY ARISING FROM ANY USAGE OF ANY TRADE OR ANY COURSE OF DEALING, IN CONNECTION WITH THE USE OF INFORMATION CONTAINED HEREIN OR THE PRODUCT ITSELF"