

AlphaLISA® SureFire® Ultra™

Human and Mouse p-SHP-2 (Tyr580) Detection Kit

Product number: ALSU-PSHP2-B500, ALSU-PSHP2-B10K,
ALSU-PSHP2-B50K, ALSU-PSHP2-B-HV



Kit specificity:

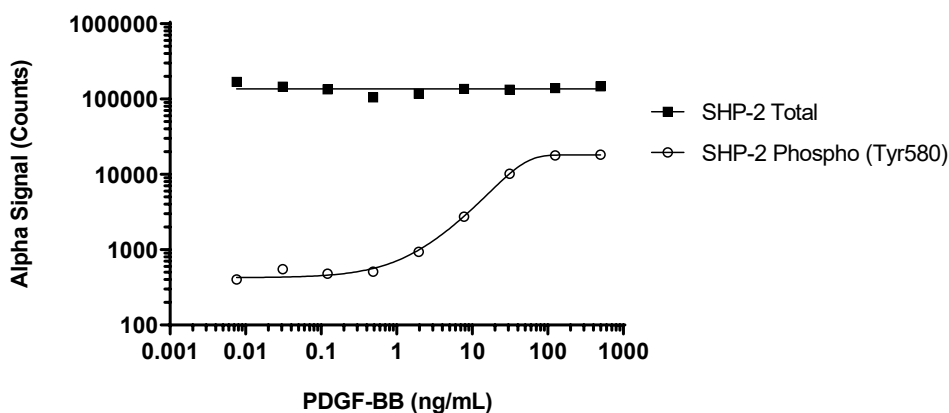
This assay kit contains antibodies which recognize the phospho-Tyr580 epitope and a distal epitope on SHP-2. The protein detected by this kit corresponds to UniProt ID Q06124. SHP-2 is also known as Tyrosine-protein phosphatase non-receptor type 11, PTP-1D, PTP-2C and SH-PTP3. These antibodies recognize SHP-2 of human and mouse origin. Other species should be tested on a case-by-case basis.

Control lysate information:

Positive Control Lysate: Prepared from HeLa cells, cultured to confluence in T175 flasks in 10% FBS containing media, treated with 2.5 mM Pervanadate for 45 minutes and lysed with 10 mL of Lysis Buffer.

Representative data

Data obtained with a 2-plate, 2-incubation protocol. NIH/3T3 cells were seeded at 40K cells/well in a 96 well plate and incubated overnight. Cells were treated with PDGF-BB at the indicated concentrations for 5 minutes. Cells were lysed with Lysis Buffer and assayed separately for Phospho (Tyr580) and Total SHP-2 using respective *SureFire Ultra* kits. Equivalent to 4,000 cells/datapoint.



The information provided in this document is for reference purposes only and may not be all-inclusive. Revvity, Inc., its subsidiaries, and/or affiliates (collectively, "Revvity") do not assume liability for the accuracy or completeness of the information contained herein. Users should exercise caution when handling materials as they may present unknown hazards. Revvity shall not be liable for any damages or losses resulting from handling or contact with the product, as Revvity cannot control actual methods, volumes, or conditions of use. Users are responsible for ensuring the product's suitability for their specific application. REVVITY EXPRESSLY DISCLAIMS ALL WARRANTIES, INCLUDING WARRANTIES OF MERCHANTABILITY OR FITNESS FOR A PARTICULAR PURPOSE, REGARDLESS OF WHETHER ORAL OR WRITTEN, EXPRESS OR IMPLIED, ALLEGEDLY ARISING FROM ANY USAGE OF ANY TRADE OR ANY COURSE OF DEALING, IN CONNECTION WITH THE USE OF INFORMATION CONTAINED HEREIN OR THE PRODUCT ITSELF"