

AlphaLISA® SureFire® Ultra™

## Human and Mouse p-RSK1 (Thr359) Detection Kit

**Product number:** ALSU-PRSK1-B500, ALSU-PRSK1-B10K,  
ALSU-PRSK1-B50K, ALSU-PRSK1-B-HV



### Kit specificity:

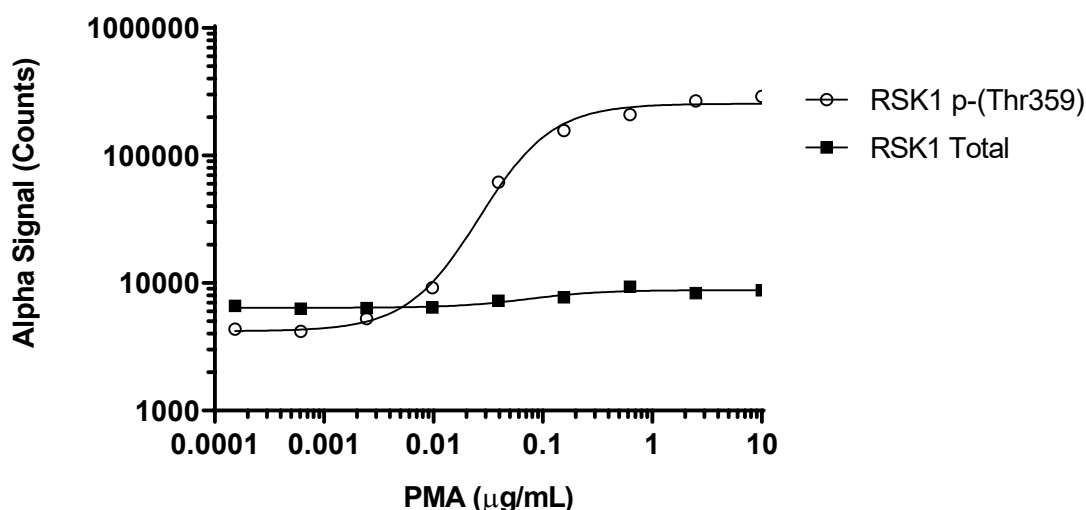
This assay kit contains antibodies which recognize the phospho-Thr359 epitope and a distal epitope on RSK1. The protein detected by this kit corresponds to UniProt ID Q15418. RSK1 is also known as Ribosomal protein S6 kinase alpha-1 and MAP kinase-activated protein kinase 1a. These antibodies recognize RSK1 of human and mouse origin. Other species should be tested on a case-by-case basis.

### Control lysate information:

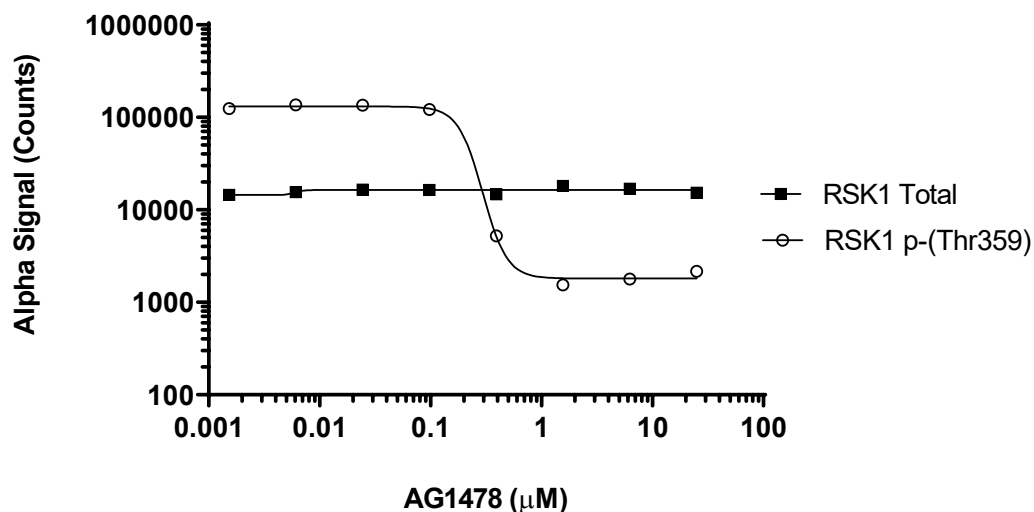
Positive Control Lysate: Prepared from A431 cells, cultured to confluence in T175 flasks in 10% FBS containing medium, then treated with 200 ng/mL rhEGF for 10 minutes, lysed with 8 mL of Lysis Buffer.

### Representative data

Data obtained from a 2-plate, 2-incubation protocol. A431 cells were seeded at 40K cells/well in a 96 well plate and incubated overnight. Cells were serum deprived for 2 hours, then treated with PMA at the indicated concentrations for 10 minutes. Cells were lysed with Lysis Buffer and assayed separately for Phospho (Thr359) and Total RSK1 using respective *SureFire Ultra* kits. Equivalent to approximately 4,000 cells/datapoint.



Data obtained from a 2-plate, 2-incubation protocol. A431 cells were seeded at 40K cells/well in a 96 well plate and incubated overnight. Cells were pre-treated with AG1478 at the indicated concentration for 2 hours, then treated with 20 ng/mL EGF for 10 minutes. Cells were lysed with Lysis Buffer and assayed separately for Phospho (Thr359) and Total RSK1 using respective *SureFire Ultra* kits. Equivalent to approximately 4,000 cells/datapoint.



The information provided in this document is for reference purposes only and may not be all-inclusive. Revvity, Inc., its subsidiaries, and/or affiliates (collectively, "Revvity") do not assume liability for the accuracy or completeness of the information contained herein. Users should exercise caution when handling materials as they may present unknown hazards. Revvity shall not be liable for any damages or losses resulting from handling or contact with the product, as Revvity cannot control actual methods, volumes, or conditions of use. Users are responsible for ensuring the product's suitability for their specific application. REVVITY EXPRESSLY DISCLAIMS ALL WARRANTIES, INCLUDING WARRANTIES OF MERCHANTABILITY OR FITNESS FOR A PARTICULAR PURPOSE, REGARDLESS OF WHETHER ORAL OR WRITTEN, EXPRESS OR IMPLIED, ALLEGEDLY ARISING FROM ANY USAGE OF ANY TRADE OR ANY COURSE OF DEALING, IN CONNECTION WITH THE USE OF INFORMATION CONTAINED HEREIN OR THE PRODUCT ITSELF"

