

AlphaLISA® SureFire® Ultra™

# Human and Mouse NFκB2 p100 Total Detection Kit

**Product number:** ALSU-TNFKB2-B500, ALSU-TNFKB2-B10K,  
ALSU-TNFKB2-B50K, ALSU-TNFKB2-B-HV



**Kit specificity:**

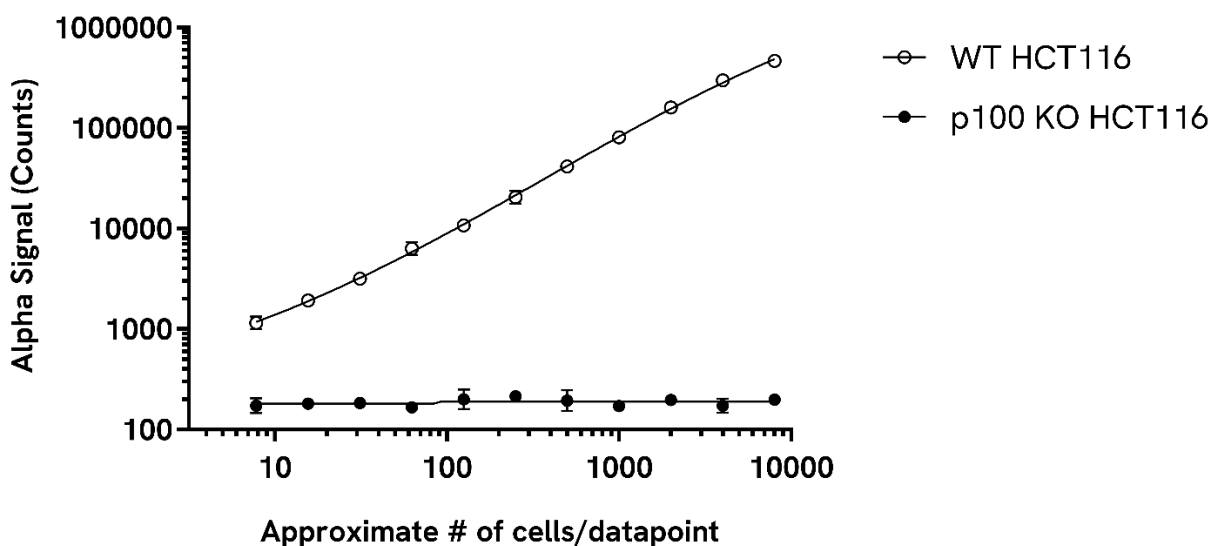
This assay kit contains antibodies which recognize distinct epitopes on the N-terminus and C-terminus of NFκB2. This kit detects the p100 precursor but not the p52 active form of NFκB2. The protein detected by this kit corresponds to UniProt ID Q00653. NFκB2 is also known as NFKB2 and LYT10. These antibodies recognize NFκB2 of human and mouse origin. Other species should be tested on a case-by-case basis.

**Control lysate information:**

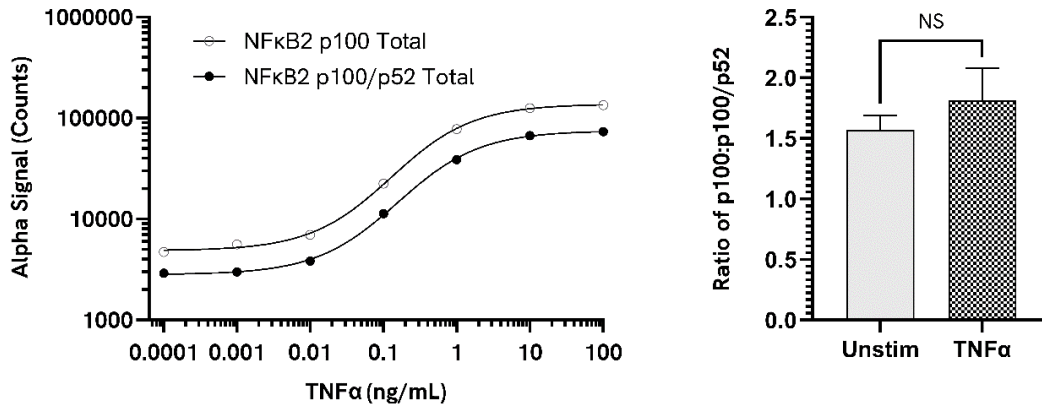
Positive Control Lysate: Prepared from A431 cells, cultured to confluence in T175 flasks in 10% FBS containing medium and lysed with 8 mL of Lysis Buffer.

**Representative data**

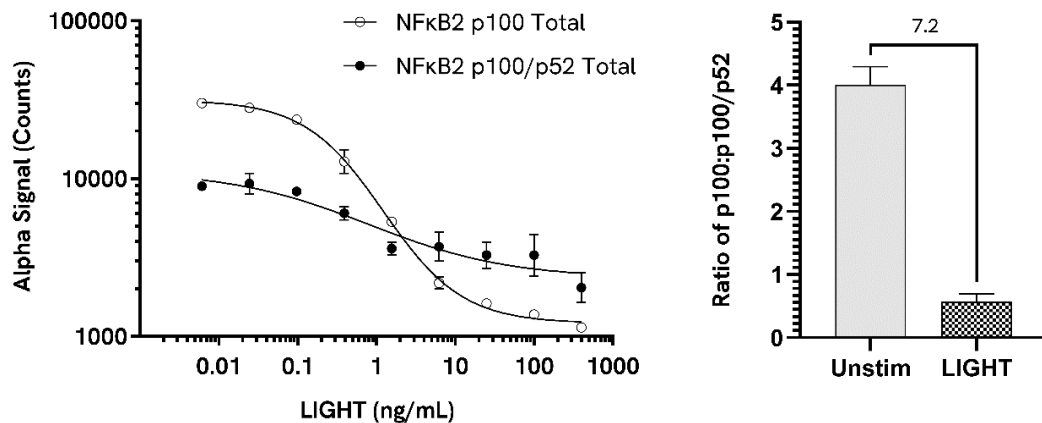
Data obtained with a 2-plate, 2-incubation protocol. HCT 116 p100 wild type (WT) or knockout (KO, Abcam ab266883) cells were seeded at 80K cells/well in a 96-well plate, incubated overnight and lysed with Lysis Buffer. Lysate was serially diluted and assayed for NFκB2 p100 Total SureFire Ultra assay. Approximate number of cells/datapoint is indicated.



Data obtained with a 2-plate, 2-incubation protocol. HeLa cells were seeded at 40K cells/well in a 96 well plate and incubated overnight. Cells were treated with TNF $\alpha$  at the indicated concentrations for 18 hours. Cells were lysed with Lysis Buffer and lysates were assayed separately for NF $\kappa$ B2 p100 Total and NF $\kappa$ B2 p100/p52 Total using respective *Surefire Ultra* kits. The ratio of p100 to p100/p52 is indicated at the TNF $\alpha$  concentration of 100 ng/mL. Equivalent to approximately 4,000 cells/datapoint.



Data obtained with a 2-plate, 2-incubation protocol. RT4 cells were seeded at 40K cells/well in a 96 well plate and incubated overnight. Cells were treated with LIGHT at the indicated concentrations for 24 hours. Cells were lysed with Lysis Buffer and assayed separately for NF $\kappa$ B2 p100 Total and NF $\kappa$ B2 p100/p52 Total using respective *Surefire Ultra* kits. The ratio of p100 to p100/p52 is indicated at the concentration of LIGHT of 400 ng/mL. Equivalent to approximately 4,000 cells/datapoint.



The information provided in this document is for reference purposes only and may not be all-inclusive. Revvity, Inc., its subsidiaries, and/or affiliates (collectively, "Revvity") do not assume liability for the accuracy or completeness of the information contained herein. Users should exercise caution when handling materials as they may present unknown hazards. Revvity shall not be liable for any damages or losses resulting from handling or contact with the product, as Revvity cannot control actual methods, volumes, or conditions of use. Users are responsible for ensuring the product's suitability for their specific application. REVVITY EXPRESSLY DISCLAIMS ALL WARRANTIES, INCLUDING WARRANTIES OF MERCHANTABILITY OR FITNESS FOR A PARTICULAR PURPOSE, REGARDLESS OF WHETHER ORAL OR WRITTEN, EXPRESS OR IMPLIED, ALLEGEDLY ARISING FROM ANY USAGE OF ANY TRADE OR ANY COURSE OF DEALING, IN CONNECTION WITH THE USE OF INFORMATION CONTAINED HEREIN OR THE PRODUCT ITSELF"

