

AlphaLISA® SureFire® Ultra™

Human and Mouse p-LRRK2 (Ser910) Detection Kit

Product number: ALSU-PLRRK2-C500, ALSU-PLRRK2-C10K,
 ALSU-PLRRK2-C50K, ALSU-PLRRK2-C-HV



Kit specificity:

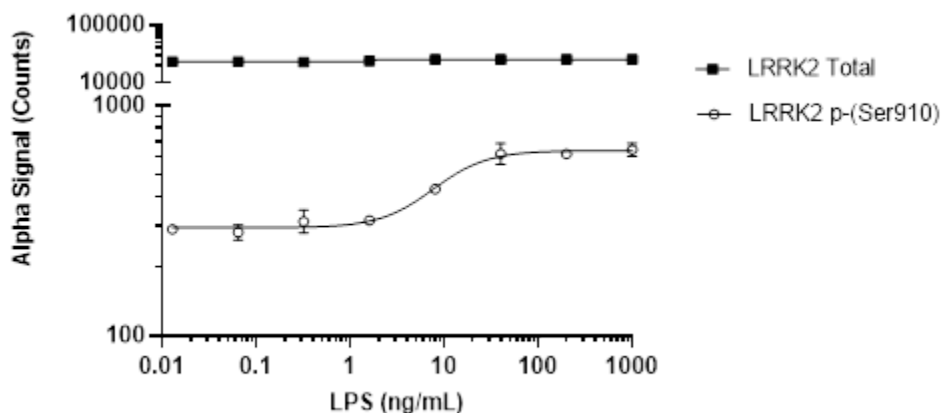
This assay kit contains antibodies which recognize the phospho-Ser910 epitope and a distal epitope on LRRK2. The protein detected by this kit corresponds to UniProt ID Q5S007. LRRK2 is also known as Leucine-rich repeat serine/threonine-protein kinase 2 and Dardarin. These antibodies recognize LRRK2 of human and mouse origin. Other species should be tested on a case-by-case basis.

Control lysate information:

Positive Control Lysate: Prepared from A549 cells, cultured to confluence in T175 flasks in 10% FBS containing medium, treated with 50 nM Calyculin A and 2 μM PMA for 30 minutes, lysed with 4 mL of Lysis Buffer.

Representative data

Data obtained with a 2-plate, 2-incubation protocol. RAW 264.7 cells were plated at 40K cells/well in a 96 well plate and incubated for 2 days. Cells were treated with LPS at the indicated concentrations for 3 hours. Cells were lysed with Lysis Buffer and assayed separately for Phospho (Ser910) and Total LRRK2 using respective *SureFire Ultra* kits. Equivalent to approximately 8,000 cells/datapoint.



The information provided in this document is for reference purposes only and may not be all-inclusive. Revvity, Inc., its subsidiaries, and/or affiliates (collectively, "Revvity") do not assume liability for the accuracy or completeness of the information contained herein. Users should exercise caution when handling materials as they may present unknown hazards. Revvity shall not be liable for any damages or losses resulting from handling or contact with the product, as Revvity cannot control actual methods, volumes, or conditions of use. Users are responsible for ensuring the product's suitability for their specific application. REVVITY EXPRESSLY DISCLAIMS ALL WARRANTIES, INCLUDING WARRANTIES OF MERCHANTABILITY OR FITNESS FOR A PARTICULAR PURPOSE, REGARDLESS OF WHETHER ORAL OR WRITTEN, EXPRESS OR IMPLIED, ALLEGEDLY ARISING FROM ANY USAGE OF ANY TRADE OR ANY COURSE OF DEALING, IN CONNECTION WITH THE USE OF INFORMATION CONTAINED HEREIN OR THE PRODUCT ITSELF"