

AlphaLISA® SureFire® Ultra™

Human and Mouse p-ERK 1/2 (Thr202/Tyr204) Detection Kit

Product number: ALSU-PERK-A500, ALSU-PERK-A10K,
ALSU-PERK-A50K, ALSU-PERK-A-HV



Kit specificity:

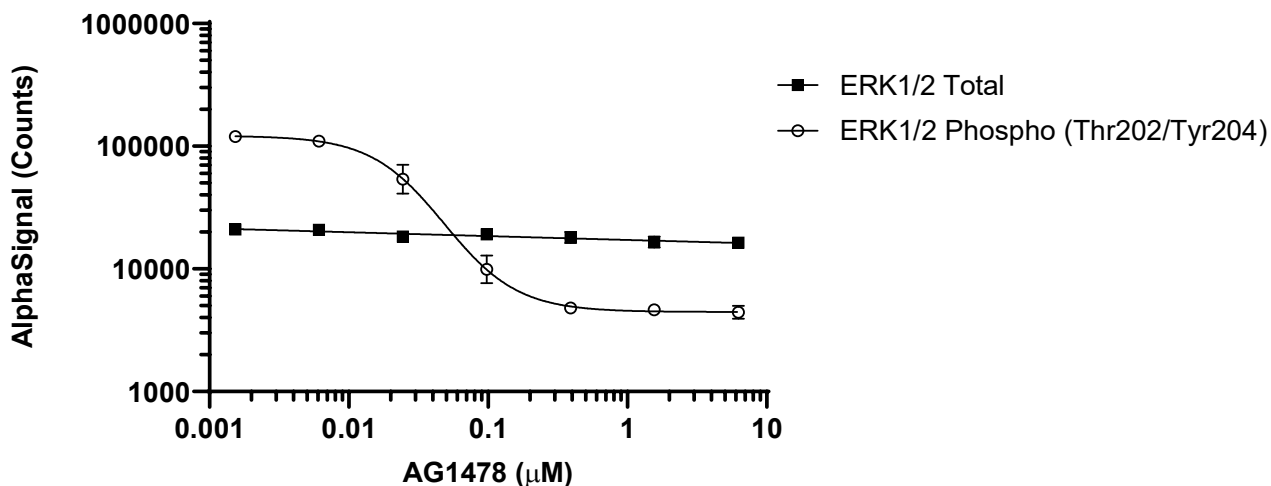
This assay kit contains antibodies which recognize the phospho-Thr202/Tyr204-epitope and a distal epitope on ERK1/2. The protein detected by this kit corresponds to UniProt ID P28482 (ERK1) and UniProt ID P28482 (ERK2). ERK1/2 is also known as Mitogen-activated protein kinase 1 (MAPK1). These antibodies recognize ERK1/2 of human and mouse origin. Other species should be tested on a case-by-case basis.

Control lysate information:

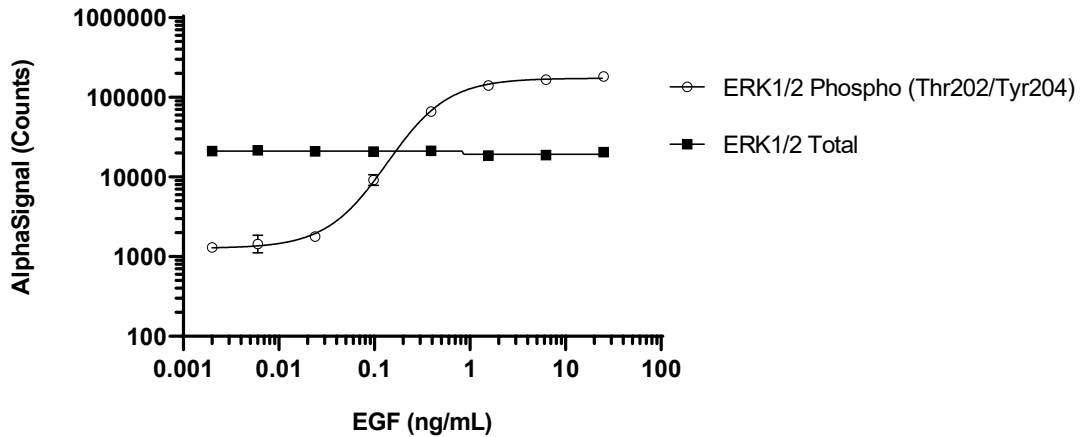
Positive Control Lysate: Prepared from A431 cells, cultured to confluence in T175 flasks in 10% FBS containing media, then treated with 200 ng/mL rhEGF for 10 minutes and lysed with 10 mL of Lysis Buffer.

Representative data

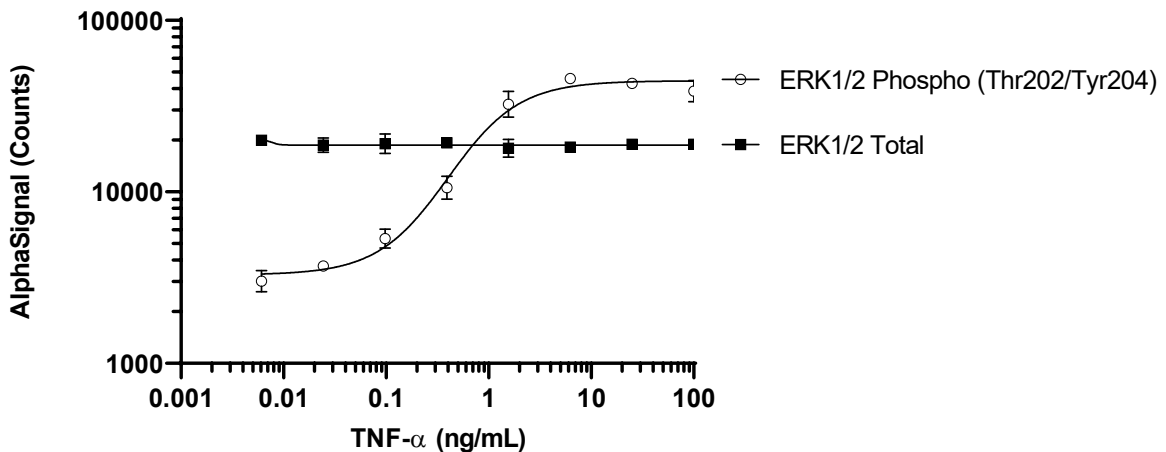
Data obtained with a 2-plate, 2-incubation protocol. HeLa cells were seeded at 40K cell per well in a 96 well plate and incubated overnight. Cells were treated with AG1478 at the indicated concentrations for 2 hours prior to treatment with 1 ng/mL EGF for 30 minutes. Cells were lysed with Lysis Buffer and assayed separately for Phospho (Thr202/Tyr204) and Total ERK1/2 using respective *SureFire Ultra* kits. Equivalent to approximately 4,000 cells/datapoint.



Data obtained with a 2-plate, 2-incubation protocol. HEK293 cells were seeded at 40K cell per well in a 96 well plate and incubated overnight. Cells were serum starved for 2 hours prior to treatment with EGF at the indicated concentrations for 30 minutes. Cells were lysed with Lysis Buffer and assayed separately for Phospho (Thr202/Tyr204) and Total ERK1/2 using respective *SureFire Ultra* kits. Equivalent to approximately 4,000 cells/datapoint.



Data obtained with a 2-plate, 2-incubation protocol. HeLa cells were seeded at 40K cell per well in a 96 well plate and incubated overnight. Cells were treated with TNF- α at the indicated concentrations for 30 minutes. Cells were lysed with Lysis Buffer and assayed separately for Phospho (Thr202/Tyr204) and Total ERK1/2 using respective *SureFire Ultra* kits. Equivalent to approximately 4,000 cells/datapoint.



The information provided in this document is for reference purposes only and may not be all-inclusive. Revvity, Inc., its subsidiaries, and/or affiliates (collectively, "Revvity") do not assume liability for the accuracy or completeness of the information contained herein. Users should exercise caution when handling materials as they may present unknown hazards. Revvity shall not be liable for any damages or losses resulting from handling or contact with the product, as Revvity cannot control actual methods, volumes, or conditions of use. Users are responsible for ensuring the product's suitability for their specific application. REVVITY EXPRESSLY DISCLAIMS ALL WARRANTIES, INCLUDING WARRANTIES OF MERCHANTABILITY OR FITNESS FOR A PARTICULAR PURPOSE, REGARDLESS OF WHETHER ORAL OR WRITTEN, EXPRESS OR IMPLIED, ALLEGEDLY ARISING FROM ANY USAGE OF ANY TRADE OR ANY COURSE OF DEALING, IN CONNECTION WITH THE USE OF INFORMATION CONTAINED HEREIN OR THE PRODUCT ITSELF"

