

AlphaLISA® SureFire® Ultra™

Human and Mouse p-CDK2 (Thr160) Detection Kit

Product number: ALSU-PCDK2-A500, ALSU-PCDK2-A10K,
ALSU-PCDK2-A50K, ALSU-PCDK2-A-HV



Kit specificity:

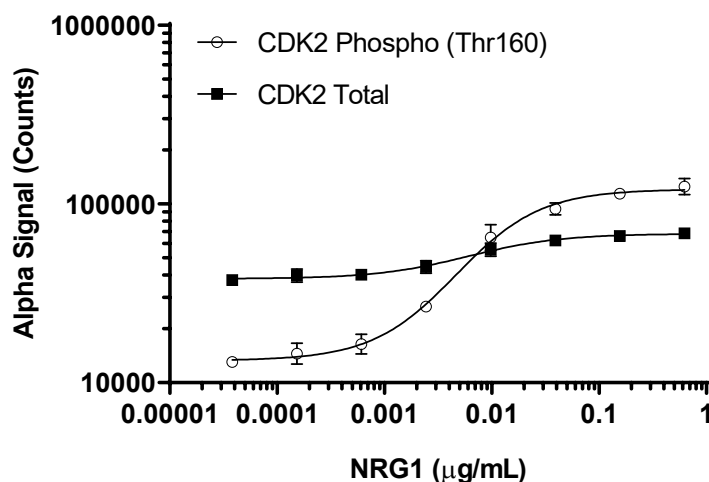
This assay kit contains antibodies which recognize the phospho-Thr160 epitope and a distal epitope on CDK2. The protein detected by this kit corresponds to UniProt ID P24941. CDK2 is also known as Cyclin-dependent kinase 2. These antibodies recognize CDK2 of human and mouse origin. Other species should be tested on a case-by-case basis.

Control lysate information:

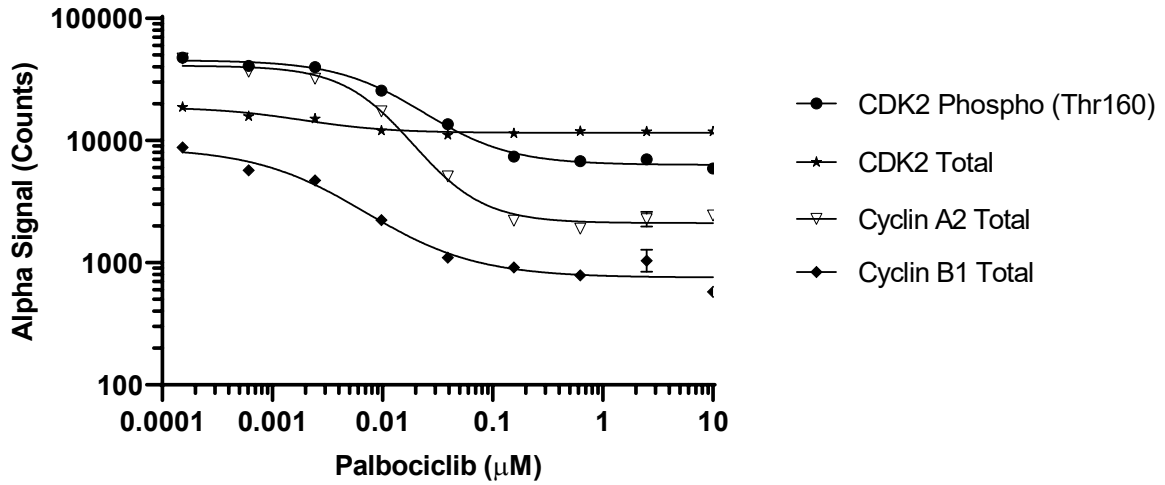
Positive Control Lysate: Prepared from HeLa cells, cultured to confluence in T175 flasks in 10% FBS containing media and lysed with 5 mL of Lysis Buffer.

Representative data

Data obtained with a 2-plate, 2-incubation protocol. MCF7 cells were seeded at 20K cells/well in a 96 well plate and incubated overnight. Cells were treated with 5 μ M Ly294002 for 2 hours and further stimulated with Neuregulin1 at the indicated concentrations for 24 hours. Both treatments were performed in serum free media. Cells were lysed with Lysis Buffer and assayed separately for Phospho (Thr160) and Total CDK2 using respective *SureFire Ultra* kits. Equivalent to approximately 2,000 cells/datapoint.



Data obtained with a 2-plate, 2-incubation protocol. THP1 cells were harvested and seeded at 200K cells/well in a 96 well plate. Cells were treated with Palbociclib and the indicated concentrations for 24 hours. Cells were spun down at 300 RCF for 5 minutes and washed once with HBSS + 0.1% BSA. Cells were lysed with Lysis Buffer and assayed for various targets using respective *SureFire Ultra* kits. Equivalent to approximately 4,000 cells/datapoint.



The information provided in this document is for reference purposes only and may not be all-inclusive. Revvity, Inc., its subsidiaries, and/or affiliates (collectively, "Revvity") do not assume liability for the accuracy or completeness of the information contained herein. Users should exercise caution when handling materials as they may present unknown hazards. Revvity shall not be liable for any damages or losses resulting from handling or contact with the product, as Revvity cannot control actual methods, volumes, or conditions of use. Users are responsible for ensuring the product's suitability for their specific application. REVVITY EXPRESSLY DISCLAIMS ALL WARRANTIES, INCLUDING WARRANTIES OF MERCHANTABILITY OR FITNESS FOR A PARTICULAR PURPOSE, REGARDLESS OF WHETHER ORAL OR WRITTEN, EXPRESS OR IMPLIED, ALLEGEDLY ARISING FROM ANY USAGE OF ANY TRADE OR ANY COURSE OF DEALING, IN CONNECTION WITH THE USE OF INFORMATION CONTAINED HEREIN OR THE PRODUCT ITSELF"

