

AlphaLISA® SureFire® Ultra™

Human and Mouse ATM Total Detection Kit

Product number: ALSU-TATM-A500, ALSU-TATM-A10K,
 ALSU-TATM-A50K, ALSU-TATM-A-HV



Kit specificity:

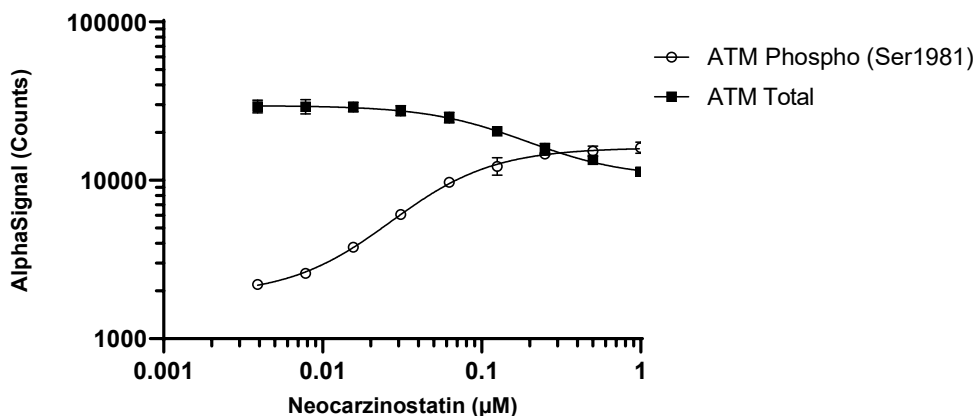
This assay kit contains antibodies which recognize distinct epitopes on ATM. The protein detected by this kit corresponds to UniProt ID Q13315. ATM is also known as Serine-protein kinase ATM. These antibodies recognize ATM of human and mouse origin. Other species should be tested on a case-by-case basis.

Control lysate information:

Positive Control Lysate: Prepared from THP 1 cells cultured in 10% FBS containing media. Cells were harvested, washed with HBSS + 0.1% BSA, adjusted to 8×10^6 cells/mL and then treated with $0.75 \mu\text{M}$ Neocarzinostatin for 90 minutes. Cells were lysed with the addition of 5X Lysis Buffer.

Representative data

Data obtained with a 2-plate, 2-incubation protocol. THP1 cells were harvested, washed, and seeded at 8×10^6 cells/mL in HBSS + 5% FBS, in a 96 well plate. Cells were treated with Neocarzinostatin at indicated concentrations for 90 minutes. Cells were lysed with 5X Lysis Buffer. and assayed separately for Phospho (Ser1981) and Total ATM using respective SureFire Ultra kits. Equivalent to approximately 16,000 cells/datapoint.



The information provided in this document is for reference purposes only and may not be all-inclusive. Revvity, Inc., its subsidiaries, and/or affiliates (collectively, "Revvity") do not assume liability for the accuracy or completeness of the information contained herein. Users should exercise caution when handling materials as they may present unknown hazards. Revvity shall not be liable for any damages or losses resulting from handling or contact with the product, as Revvity cannot control actual methods, volumes, or conditions of use. Users are responsible for ensuring the product's suitability for their specific application. REVVITY EXPRESSLY DISCLAIMS ALL WARRANTIES, INCLUDING WARRANTIES OF MERCHANTABILITY OR FITNESS FOR A PARTICULAR PURPOSE, REGARDLESS OF WHETHER ORAL OR WRITTEN, EXPRESS OR IMPLIED, ALLEGEDLY ARISING FROM ANY USAGE OF ANY TRADE OR ANY COURSE OF DEALING, IN CONNECTION WITH THE USE OF INFORMATION CONTAINED HEREIN OR THE PRODUCT ITSELF"