

AlphaLISA® SureFire® Ultra™

Human and Mouse p-4E-BP1 (Thr37/46) Detection Kit

Product number: ALSU-P4EBP-A500, ALSU-P4EBP-A10K,
ALSU-P4EBP-A50K, ALSU-P4EBP-A-HV



Kit specificity:

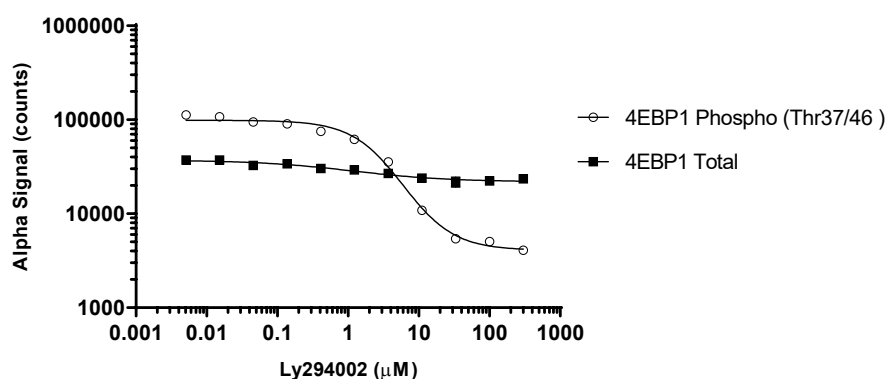
This assay kit contains antibodies which recognize the phospho-Thr37/46 epitope and a distal epitope on 4E-BP1. The protein detected by this kit corresponds to UniProt ID Q13541. 4E-BP1 is also known as BP-1, 4EBP1 and EIF4EBP1. These antibodies recognize 4E-BP1 of human and mouse origin. Other species should be tested on a case-by-case basis.

Control lysate information:

Positive Control Lysate: Prepared from MCF7 cells, cultured to confluence in T175 flasks in 10% FBS containing medium, then treated with 500 µg/mL insulin for 30 minutes and lysed with 20 mL of Lysis Buffer.

Representative data

Data obtained with a 2-plate, 2-incubation protocol. MCF7 cells were seeded at 10K cells per well in a 96 well plate and incubated overnight. Cells were treated with Ly294002 inhibitor at the indicated concentrations for 2 hours. Cells were lysed with Lysis Buffer and diluted further prior to assaying separately for Phospho (Thr37/46) and Total 4E-BP1, using respective *SureFire Ultra* kits. Equivalent to approximately 200 cells/datapoint.



The information provided in this document is for reference purposes only and may not be all-inclusive. Revvity, Inc., its subsidiaries, and/or affiliates (collectively, "Revvity") do not assume liability for the accuracy or completeness of the information contained herein. Users should exercise caution when handling materials as they may present unknown hazards. Revvity shall not be liable for any damages or losses resulting from handling or contact with the product, as Revvity cannot control actual methods, volumes, or conditions of use. Users are responsible for ensuring the product's suitability for their specific application. REVVITY EXPRESSLY DISCLAIMS ALL WARRANTIES, INCLUDING WARRANTIES OF MERCHANTABILITY OR FITNESS FOR A PARTICULAR PURPOSE, REGARDLESS OF WHETHER ORAL OR WRITTEN, EXPRESS OR IMPLIED, ALLEGEDLY ARISING FROM ANY USAGE OF ANY TRADE OR ANY COURSE OF DEALING, IN CONNECTION WITH THE USE OF INFORMATION CONTAINED HEREIN OR THE PRODUCT ITSELF"