

AlphaLISA® SureFire® Ultra™

# Human Progesterone Receptor Total Detection Kit

**Product number:** ALSU-TPROGR-A500, ALSU-TPROGR-A10K,  
ALSU-TPROGR-A50K, ALSU-TPROGR-A-HV



**Kit specificity:**

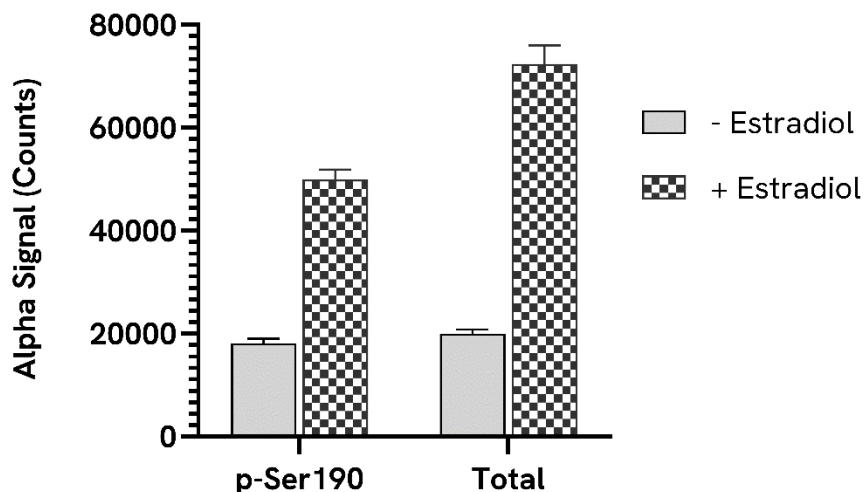
This assay kit contains antibodies which recognize distinct epitopes on Progesterone Receptor. The protein detected by this kit corresponds to UniProt ID P06401. Progesterone Receptor is also known as Nuclear receptor subfamily 3 group C. These antibodies recognize Progesterone Receptor of human origin. Other species should be tested on a case-by-case basis.

**Control lysate information:**

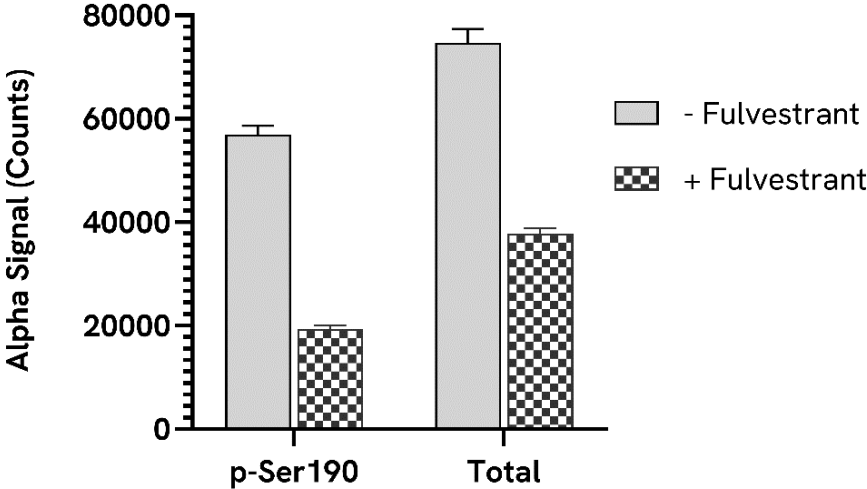
Positive Control Lysate: Prepared from MCF7 cells, cultured to confluence in T175 flasks in 10% FBS containing medium and lysed with 3 mL of Lysis Buffer.

**Representative data:**

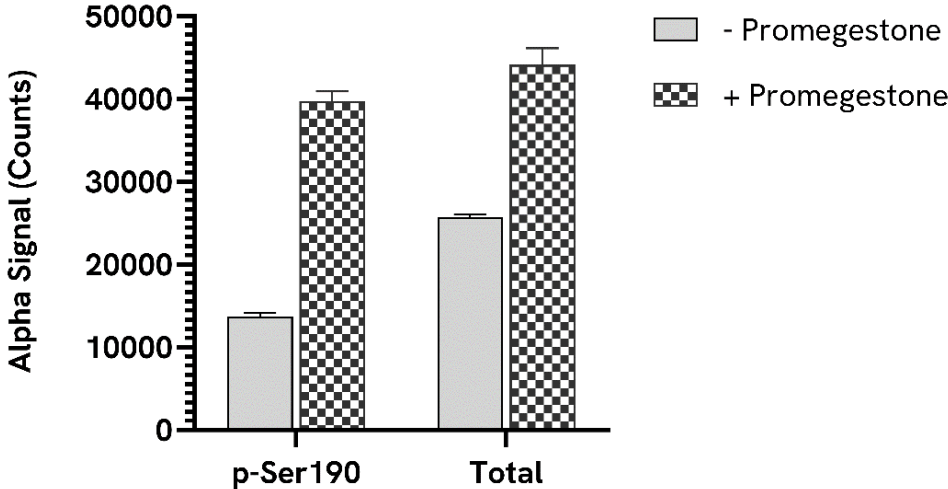
Data obtained with a 2-plate, 2-incubation protocol. MCF7 cells were seeded at 40K cells/well in a 96 well plate and incubated overnight. Cells were treated with 0.78 nM of 17-β Estradiol for 24 hours in media containing 10% FBS. Cells were lysed with Lysis Buffer and assayed separately for Phospho (Ser190) and Total Progesterone Receptor using respective *SureFire Ultra* kits. Equivalent to approximately 4,000 cells/datapoint.



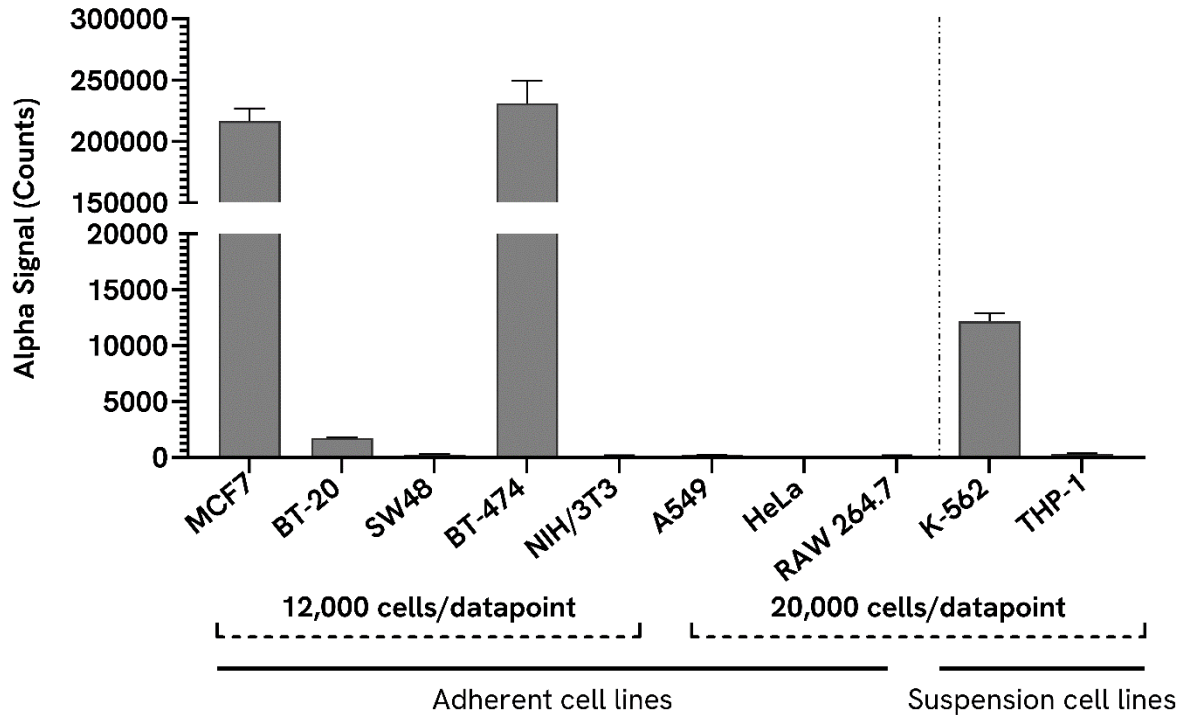
Data obtained with a 2-plate, 2-incubation protocol. MCF7 cells were seeded at 40K cells/well in a 96 well plate and incubated overnight. Cells were treated with 10 µg/mL of Fulvestrant for 18 hours in media containing 10% FBS. Cells were lysed with Lysis Buffer and assayed separately for Phospho (Ser190) and Total Progesterone Receptor using respective *SureFire Ultra* kits. Equivalent to approximately 4,000 cells/datapoint.



Data obtained with a 2-plate, 2-incubation protocol. MCF7 cells were seeded at 20K cells/well in a 96 well plate and incubated overnight. Cells were treated with 1 µM of Promegestone (R5020) for 2 hours in media containing 10% FBS. Cells were lysed with Lysis Buffer and assayed separately for Phospho (Ser190) and Total Progesterone Receptor using respective *SureFire Ultra* kits. Equivalent to approximately 2,000 cells/datapoint.



Data obtained from measurement of Progesterone Receptor Total in various cell types lysed with Lysis Buffer. Approximate number of cells/datapoint is indicated for the various cell lines.



The information provided in this document is for reference purposes only and may not be all-inclusive. Revvity, Inc., its subsidiaries, and/or affiliates (collectively, "Revvity") do not assume liability for the accuracy or completeness of the information contained herein. Users should exercise caution when handling materials as they may present unknown hazards. Revvity shall not be liable for any damages or losses resulting from handling or contact with the product, as Revvity cannot control actual methods, volumes, or conditions of use. Users are responsible for ensuring the product's suitability for their specific application. REVVITY EXPRESSLY DISCLAIMS ALL WARRANTIES, INCLUDING WARRANTIES OF MERCHANTABILITY OR FITNESS FOR A PARTICULAR PURPOSE, REGARDLESS OF WHETHER ORAL OR WRITTEN, EXPRESS OR IMPLIED, ALLEGEDLY ARISING FROM ANY USAGE OF ANY TRADE OR ANY COURSE OF DEALING, IN CONNECTION WITH THE USE OF INFORMATION CONTAINED HEREIN OR THE PRODUCT ITSELF"

