

AlphaLISA® SureFire® Ultra™

Human p-NDRG1 (Thr346) Detection Kit

Product number: ALSU-PNDRG1-B500, ALSU-PNDRG1-B10K,
ALSU-PNDRG1-B50K, ALSU-PNDRG1-B-HV



Kit specificity:

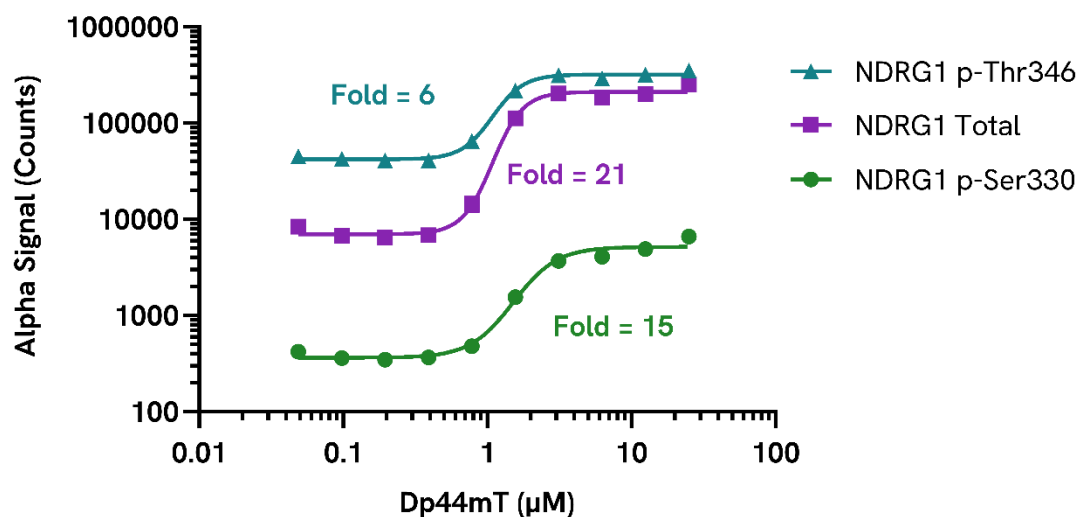
This assay kit contains antibodies which recognize the phospho-Thr346 epitope and a distal epitope on NDRG1. The protein detected by this kit corresponds to UniProt ID Q92597. NDRG1 is also known as DRG1 and N-Myc Downstream-Regulated Gene 1 Protein. These antibodies recognize NDRG1 of human origin. Other species should be tested on a case-by-case basis.

Control lysate information:

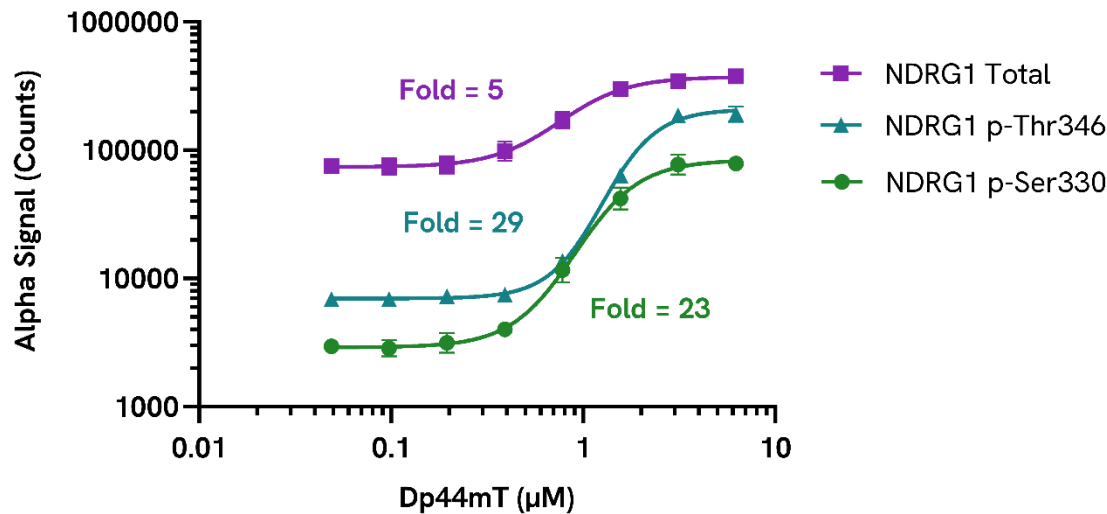
Positive Control Lysate: Prepared from A431 cells, cultured to confluence in T175 flasks in 10% FBS containing medium and lysed with 4 mL of Lysis Buffer.

Representative data:

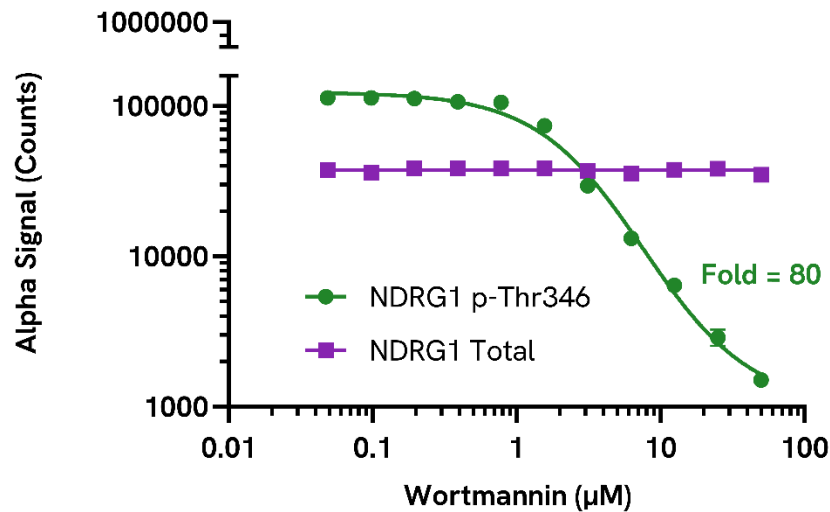
Data obtained with a 2 plate, 2 incubation protocol. HeLa cells were seeded at 40K cells/well in a 96 well plate and incubated overnight. Cells were treated with Dp44mT at the indicated concentrations for 18 hours. Cells were lysed with Lysis Buffer and assayed separately for Phospho (Ser330), Phospho (Thr346) and Total NDRG1 using respective SureFire Ultra kits. Equivalent to approximately 800 cells/datapoint.



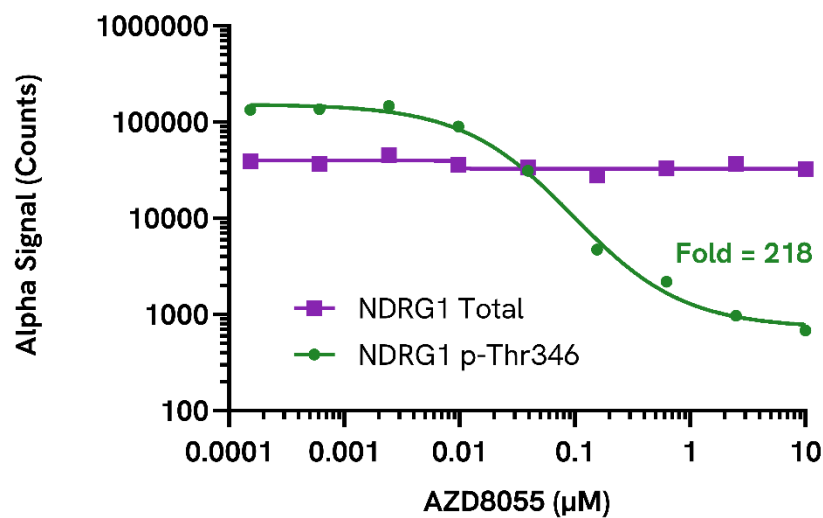
Data obtained with a 2 plate, 2 incubation protocol. A431 cells were seeded at 60K cells/well in a 96 well plate and incubated overnight. Cells were treated with Dp44mT at the indicated concentrations for 18 hours. Cells were lysed with Lysis Buffer and assayed separately for Phospho (Ser330), Phospho (Thr346) and Total NDRG1 using respective *SureFire Ultra* kits. Equivalent to approximately 1,200 cells/datapoint.



Data obtained with a 2 plate, 2 incubation protocol. HeLa cells were seeded at 40K cells/well in a 96 well plate and incubated overnight. Cells were treated with Wortmannin at the indicated concentrations for 2 hours. Cells were lysed with Lysis Buffer and assayed separately for Phospho (Thr346) and Total NDRG1 using respective *SureFire Ultra* kits. Equivalent to approximately 4,000 cells/datapoint.



Data obtained with a 2 plate, 2 incubation protocol. HeLa cells were seeded at 40K cells/well in a 96 well plate and incubated overnight. Cells were treated with AZD8055 at the indicated concentrations for 2 hours. Cells were lysed with Lysis Buffer and assayed separately for Phospho (Thr346) and Total NDRG1 using respective *SureFire Ultra* kits. Equivalent to approximately 4,000 cells/datapoint.



The information provided in this document is for reference purposes only and may not be all-inclusive. Revvity, Inc., its subsidiaries, and/or affiliates (collectively, “Revvity”) do not assume liability for the accuracy or completeness of the information contained herein. Users should exercise caution when handling materials as they may present unknown hazards. Revvity shall not be liable for any damages or losses resulting from handling or contact with the product, as Revvity cannot control actual methods, volumes, or conditions of use. Users are responsible for ensuring the product's suitability for their specific application. REVVITY EXPRESSLY DISCLAIMS ALL WARRANTIES, INCLUDING WARRANTIES OF MERCHANTABILITY OR FITNESS FOR A PARTICULAR PURPOSE, REGARDLESS OF WHETHER ORAL OR WRITTEN, EXPRESS OR IMPLIED, ALLEGEDLY ARISING FROM ANY USAGE OF ANY TRADE OR ANY COURSE OF DEALING, IN CONNECTION WITH THE USE OF INFORMATION CONTAINED HEREIN OR THE PRODUCT ITSELF”

