

AlphaLISA™ SureFire® Ultra™

# Human MYD88 Total Detection Kit

**Product number:** ALSU-TMYD-A500, ALSU-TMYD-A10K,  
ALSU-TMYD-A50K, ALSU-TMYD-A-HV



**Kit specificity:**

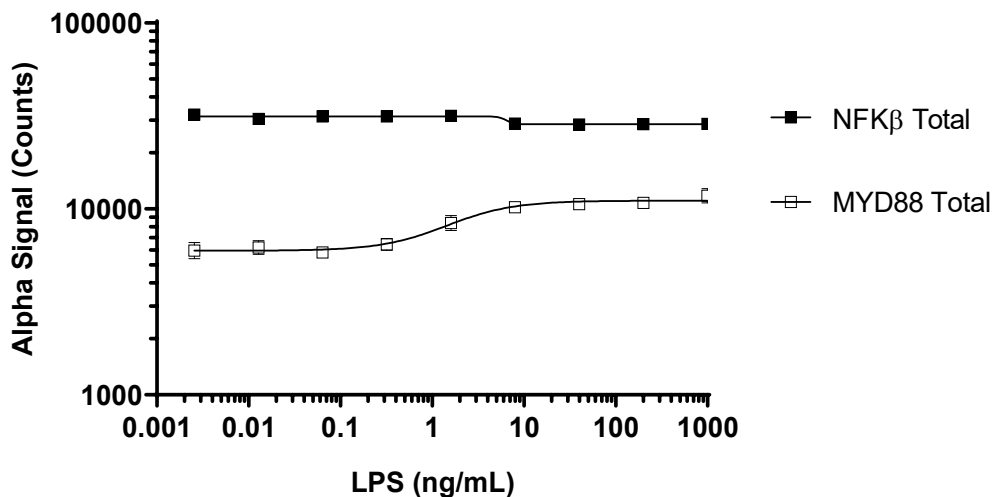
This assay kit contains antibodies which recognize distinct epitopes on MYD88. The protein detected by this kit corresponds to UniProt ID Q99836. MYD88 is also known as myeloid differentiation primary response protein MyD88. These antibodies recognize MYD88 of human origin. Other species should be tested on a case-by-case basis.

**Control lysate information:**

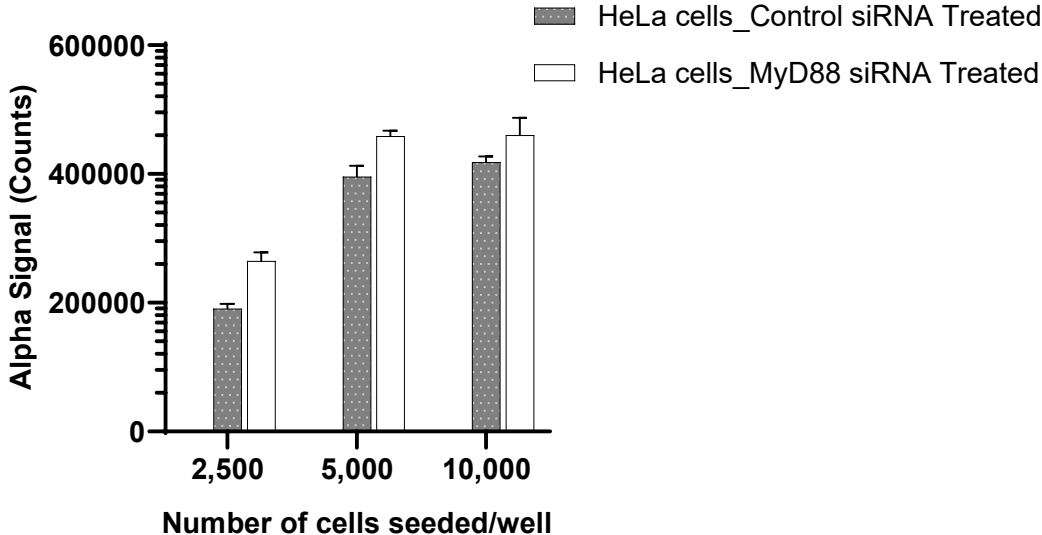
Positive Control Lysate: Prepared from HeLa cells, cultured to confluence in T175 flasks in 10% FBS containing medium and lysed with 8 mL of Lysis Buffer.

**Representative data:**

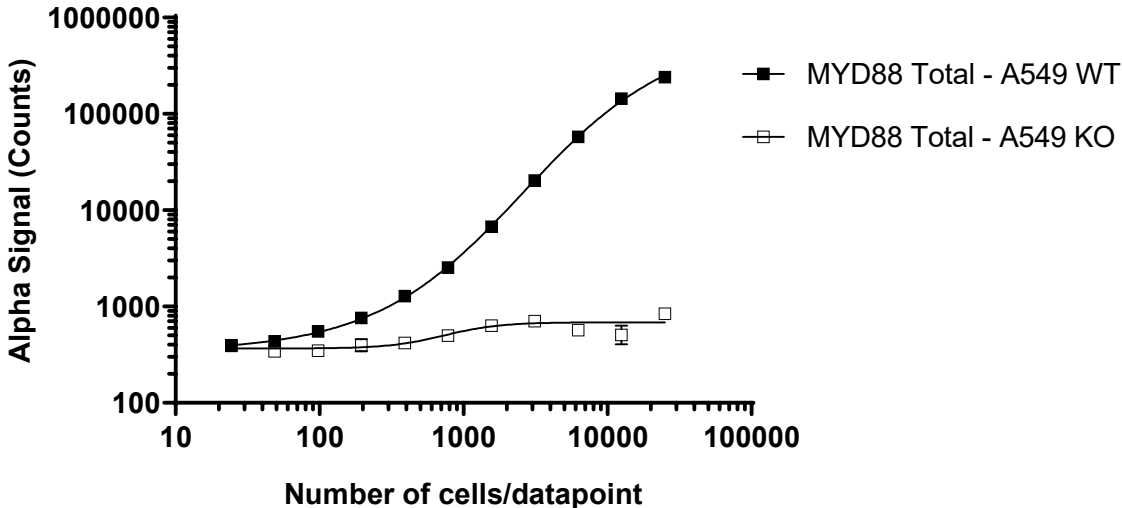
Data obtained with a 2-plate, 2-incubation protocol. THP-1 cells were seeded at 80K cells/well in a 96 well plate and treated with 100 nM PMA for 24 hours. Cells were then treated with LPS at the indicated concentrations for 24 hours in media containing 100 nM PMA. Cells were lysed with Lysis Buffer and assayed for MYD88 Total and NFKβ Total using respective SureFire Ultra assays. Equivalent to approximately 1,600 cells/datapoint.



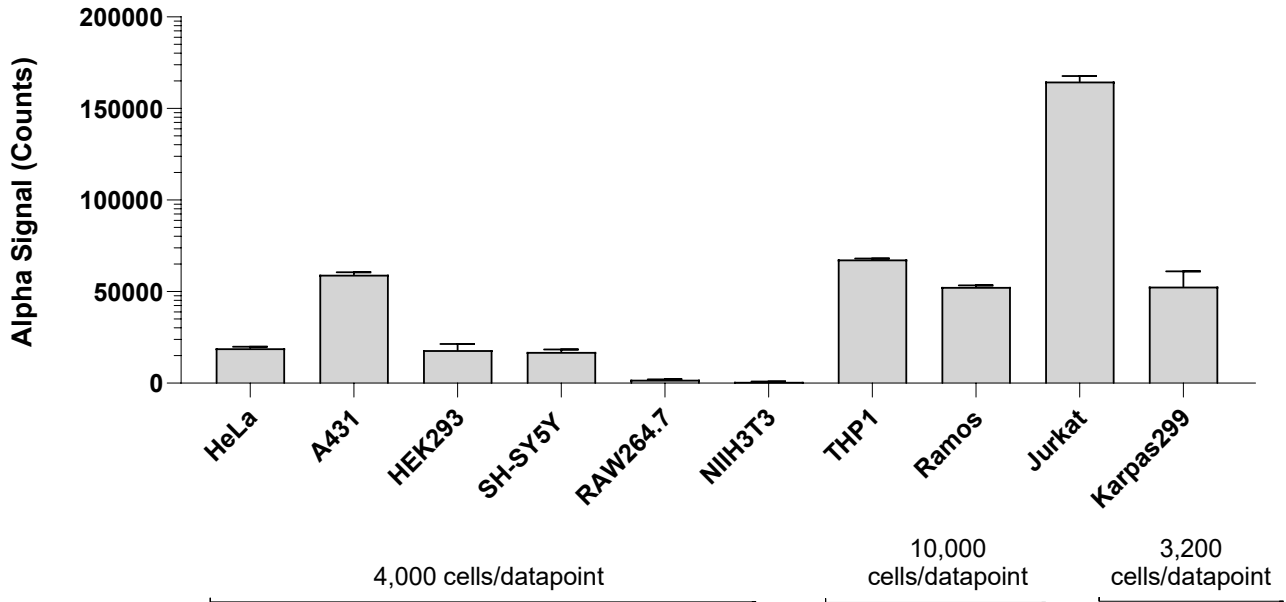
Data obtained with a 2-plate, 2-incubation protocol. HeLa cells were seeded at 2,500; 5,000 or 10,000 cells/well in a 96 well plate and incubated overnight. Cells were treated with 50  $\mu$ L of a mix of transfection reagent/siRNA control (sc-37007 Santa Cruz) or a mix of transfection reagent/MYD88 siRNA (sc-35986 Santa Cruz) for 48 hours. Cells were lysed with 100  $\mu$ L Lysis Buffer and lysates were assayed for MYD88 by *SureFire Ultra*.



A549-MYD88 wild type (WT) and A549-MYD88 knockout (KO, Abcam ab286715) cell lines were cultured to confluence in T175 flasks. Each flask was lysed in 8 mL of Lysis Buffer. Lysates were serially diluted with Lysis Buffer and assayed for MYD88 Total by *SureFire Ultra*. Approximate cells/datapoint is indicated.



Data obtained from measurement of MYD88 Total in various cell types lysed with Lysis Buffer. Approximate number of cells/datapoint is indicated for the various cell lines.



The information provided in this document is for reference purposes only and may not be all-inclusive. Revvity, Inc., its subsidiaries, and/or affiliates (collectively, "Revvity") do not assume liability for the accuracy or completeness of the information contained herein. Users should exercise caution when handling materials as they may present unknown hazards. Revvity shall not be liable for any damages or losses resulting from handling or contact with the product, as Revvity cannot control actual methods, volumes, or conditions of use. Users are responsible for ensuring the product's suitability for their specific application. REVVITY EXPRESSLY DISCLAIMS ALL WARRANTIES, INCLUDING WARRANTIES OF MERCHANTABILITY OR FITNESS FOR A PARTICULAR PURPOSE, REGARDLESS OF WHETHER ORAL OR WRITTEN, EXPRESS OR IMPLIED, ALLEGEDLY ARISING FROM ANY USAGE OF ANY TRADE OR ANY COURSE OF DEALING, IN CONNECTION WITH THE USE OF INFORMATION CONTAINED HEREIN OR THE PRODUCT ITSELF"

