

AlphaLISA® SureFire® Ultra™

Human Cyclin E1 Total Detection Kit

Product number: ALSU-TCYCE1-A500, ALSU-TCYCE1-A10K,
ALSU-TCYCE1-A50K, ALSU-TCYCE1-A-HV



Kit specificity:

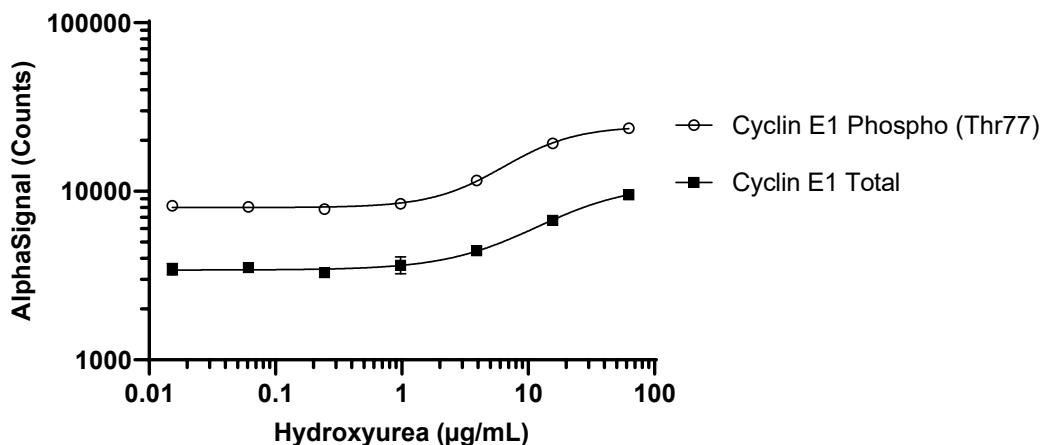
This assay kit contains antibodies which recognize distinct epitopes on Cyclin E1. The protein detected by this kit corresponds to UniProt ID P24864. Cyclin E1 is also known as G1/S-specific cyclin E1 and CCNE1. These antibodies recognize Cyclin E1 of human origin. Other species should be tested on a case-by-case basis.

Control lysate information:

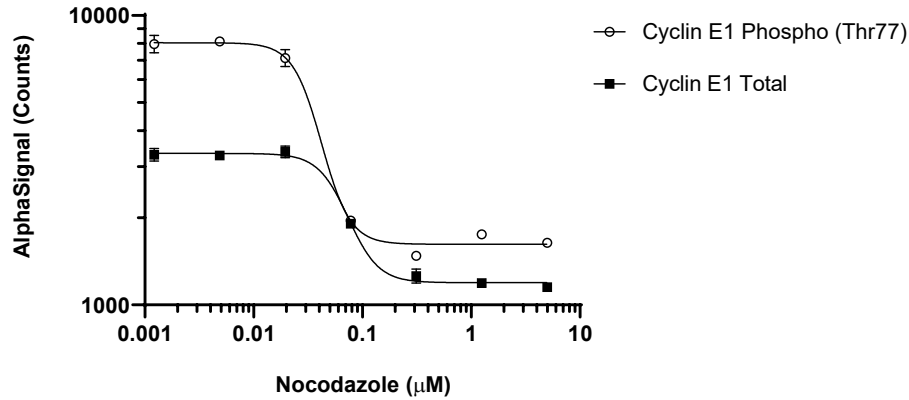
Positive Control Lysate: Prepared from BeWo cells, cultured to confluence in T175 flasks in 10% FBS containing media and lysed with 3 mL of Lysis Buffer.

Representative data

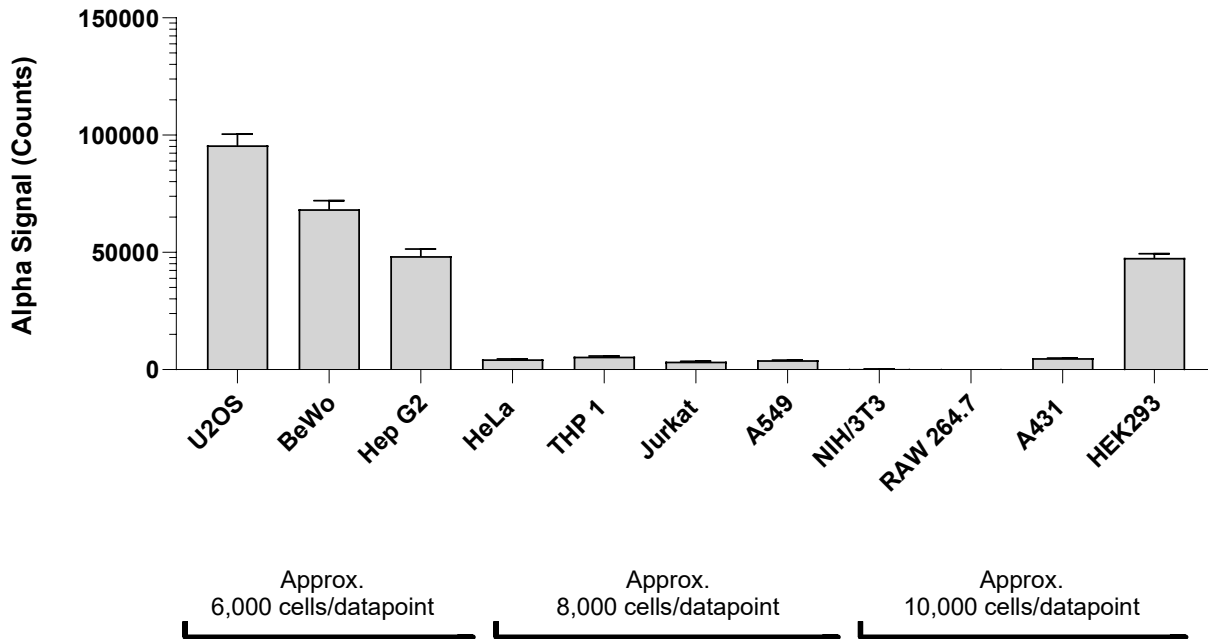
Data obtained with a 2-plate, 2-incubation protocol. A549 cells were seeded at 20K cells/well in a 96 well plate and incubated overnight. Cells were treated with Hydroxyurea at the indicated concentrations for 18 hours. Cells were lysed with Lysis Buffer and assayed separately for Phospho (Thr77) and Total Cyclin E1 using respective SureFire Ultra kits. Equivalent to approximately 4,000 cells/datapoint.



Data obtained with a 2-plate, 2-incubation protocol. A549 cells were plated at 20K cells/well in a 96 well plate and incubated overnight. Cells were treated with Nocodazole at the indicated concentrations for 18 hours. Cells were lysed with Lysis Buffer and assayed separately for Phospho (Thr77) and Total Cyclin E1 using respective *SureFire Ultra* kits. Equivalent to approximately 4,000 cells/datapoint.



Data obtained from measurement of Cyclin E1 Total in various cell types lysed with Lysis Buffer. Approximate number of cells/datapoint is indicated for the various cell lines.



The information provided in this document is for reference purposes only and may not be all-inclusive. Revvity, Inc., its subsidiaries, and/or affiliates (collectively, "Revvity") do not assume liability for the accuracy or completeness of the information contained herein. Users should exercise caution when handling materials as they may present unknown hazards. Revvity shall not be liable for any damages or losses resulting from handling or contact with the product, as Revvity cannot control actual methods, volumes, or conditions of use. Users are responsible for ensuring the product's suitability for their specific application. REVVITY EXPRESSLY DISCLAIMS ALL WARRANTIES, INCLUDING WARRANTIES OF MERCHANTABILITY OR FITNESS FOR A PARTICULAR PURPOSE, REGARDLESS OF WHETHER ORAL OR WRITTEN, EXPRESS OR IMPLIED, ALLEGEDLY ARISING FROM ANY USAGE OF ANY TRADE OR ANY COURSE OF DEALING, IN CONNECTION WITH THE USE OF INFORMATION CONTAINED HEREIN OR THE PRODUCT ITSELF"

