

AlphaLISA® SureFire® Ultra™

Human AKT 1/2/3 Total Detection Kit

Product number: ALSU-TAKT-B500, ALSU-TAKT-B10K,
 ALSU-TAKT-B50K, ALSU-TAKT-B-HV



Kit specificity:

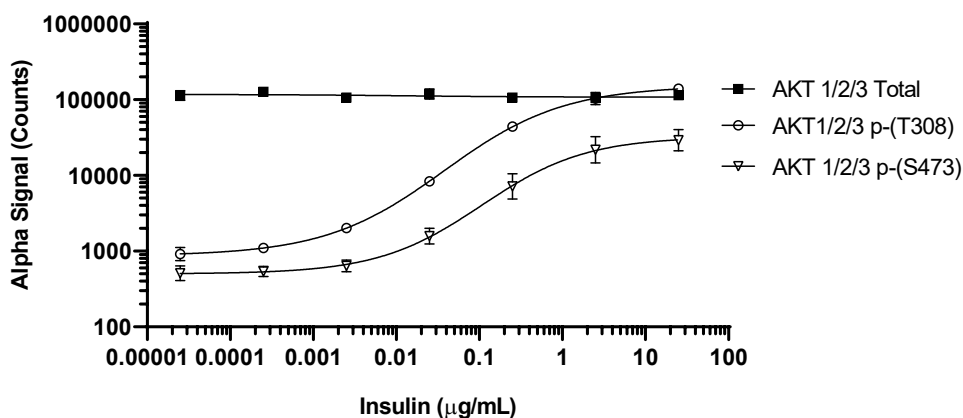
This assay kit contains antibodies which recognize distinct epitopes common to AKT 1, AKT 2 and AKT 3. The proteins detected by this kit corresponds to UniProt ID P31749 (AKT 1), P31751 (AKT 2) and Q9Y243 (AKT 3). AKT proteins are also known as PKB or RAC. These antibodies recognize AKT 1/2/3 of human origin. Other species should be tested on a case-by-case basis.

Control lysate information:

Positive Control Lysate: Prepared from HEK293 cells, cultured to confluence in T175 flasks in 10 % FBS containing medium, then treated with 20 % FBS for 15 minutes and lysed with 4 mL of Lysis Buffer.

Representative data

Data obtained with a 2-plate, 2-incubation protocol. MCF7 cells were seeded at 40K cells/well in a 96 well plate and incubated overnight. Cells were serum starved for 2 hours, then treated with Insulin at the indicated concentrations for 30 minutes. Cells were lysed with Lysis Buffer and assayed separately for Phospho (Ser473, Thr308) and Total AKT 1/2/3/ using respective *SureFire Ultra* kits. Equivalent to approximately 4,000 cells/datapoint.



The information provided in this document is for reference purposes only and may not be all-inclusive. Revvity, Inc., its subsidiaries, and/or affiliates (collectively, "Revvity") do not assume liability for the accuracy or completeness of the information contained herein. Users should exercise caution when handling materials as they may present unknown hazards. Revvity shall not be liable for any damages or losses resulting from handling or contact with the product, as Revvity cannot control actual methods, volumes, or conditions of use. Users are responsible for ensuring the product's suitability for their specific application. REVVITY EXPRESSLY DISCLAIMS ALL WARRANTIES, INCLUDING WARRANTIES OF MERCHANTABILITY OR FITNESS FOR A PARTICULAR PURPOSE, REGARDLESS OF WHETHER ORAL OR WRITTEN, EXPRESS OR IMPLIED, ALLEGEDLY ARISING FROM ANY USAGE OF ANY TRADE OR ANY COURSE OF DEALING, IN CONNECTION WITH THE USE OF INFORMATION CONTAINED HEREIN OR THE PRODUCT ITSELF"