

IVISense™ Gastrointestinal 750 Fluorescent Probe

Product Number: NEV11121

DESCRIPTION

IVISense™ Gastrointestinal 750 Fluorescent Probe is a near-infrared, fluorescently labeled macromolecule that may be used to monitor the effects of disease or drugs on gastric motility and or gastric emptying. It may also be used as an anatomical marker for the gastrointestinal tract.

MATERIAL

Each vial contains 3 nmol of IVISense™ Gastrointestinal 750 Fluorescent Probe in dry solid form. Reconstitute IVISense™ Gastrointestinal 750 Fluorescent Probe with 1.2 mL of 1 x PBS before gavaging or feeding to animals. The packaged material provides sufficient reagent for imaging approximately 10 mice (weighing ~25 grams each) when using the recommended dose of 0.25 nmol (in 100 µL of PBS) of IVISense™ Gastrointestinal 750 Fluorescent Probe per mouse.

STORAGE & HANDLING

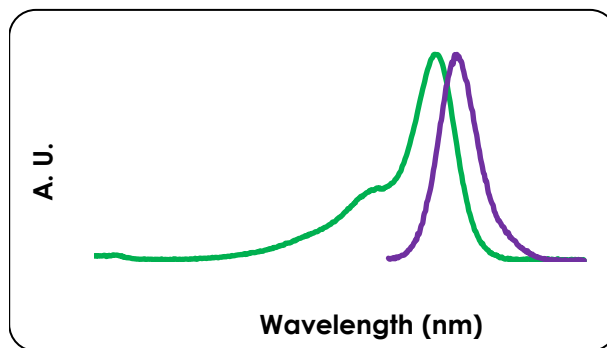
- Upon receipt, IVISense™ Gastrointestinal 750 Fluorescent Probe should be IMMEDIATELY STORED AT 2-8 °C AND PROTECTED FROM LIGHT.
- When stored and handled properly, IVISense™ Gastrointestinal 750 Fluorescent Probe is stable for up to 12 months in dry solid form.
- Allow IVISense™ Gastrointestinal 750 Fluorescent Probe to equilibrate to room temperature before introducing into animals.
- Once reconstituted, the solution is stable up to 14 days when stored at 2-8°C and protected from light.

IN VIVO IMAGING & APPLICATIONS

- IVISense™ Gastrointestinal 750 Fluorescent Probe may be reconstituted with 1x PBS. A methylcellulose solution may also be used, or it may be reconstituted with a liquid diet supplement solution.
- The recommended procedure for in vivo imaging with IVISense™ Gastrointestinal 750 Fluorescent Probe is administration via gavage or in solid food (egg yolk) and then imaging at the desired time points beginning immediately after ingestion. It may also be administered as part of a solid diet by applying the reconstituted solution to egg yolk. When added to a solid diet it may be easier to reconstitute the vial of IVISense™ Gastrointestinal 750 Fluorescent Probe with 300 µL of 1x PBS and use 25 µL per mouse.

Property	Specification
MW	~40,000 g mol ⁻¹
Fluorescence ¹	
• Excitation	750 ± 5 nm
• Emission	770 ± 5 nm
Absorbance ¹	750 ± 5 nm
Purity ²	>95%
Appearance	Blue Solid

1. Absorbance and fluorescence in 1xPBS.
2. As determined by SEC-HPLC, measuring absorbance at 750nm



- Clearance times will depend on the method of administration and the animal model used. For example, when gavaged as a liquid in normal healthy mice the average half-life in the stomach may be as little as 15-30 minutes though times will vary significantly based on age, sex and strain of animal. When IVISense™ Gastrointestinal 750 Fluorescent Probe is administered as part of a solid diet clearance half-lives typically increase.
- IVISense™ Gastrointestinal 750 Fluorescent Probe remains localized in the GI tract. It does not appear to be absorbed into the bloodstream.
- Imaging in Gastric Emptying: IVISense™ Gastrointestinal 750 Fluorescent Probe may be used to study the effect of drugs or disease progression on gastric emptying or gastric motility.
- Imaging as an anatomical marker: IVISense™ Gastrointestinal 750 Fluorescent Probe may be used as an anatomical reference marker for imaging the gastrointestinal tract.

The information provided in this document is for reference purposes only and may not be all-inclusive. Revvity, Inc., its subsidiaries, and/or affiliates (collectively, "Revvity") do not assume liability for the accuracy or completeness of the information contained herein. Users should exercise caution when handling materials as they may present unknown hazards. Revvity shall not be liable for any damages or losses resulting from handling or contact with the product, as Revvity cannot control actual methods, volumes, or conditions of use. Users are responsible for ensuring the product's suitability for their specific application. REVVITY EXPRESSLY DISCLAIMS ALL WARRANTIES, INCLUDING WARRANTIES OF MERCHANTABILITY OR FITNESS FOR A PARTICULAR PURPOSE, REGARDLESS OF WHETHER ORAL OR WRITTEN, EXPRESS, OR IMPLIED, ALLEGEDLY ARISING FROM ANY USAGE OF ANY TRADE OR ANY COURSE OF DEALING, IN CONNECTION WITH THE USE OF INFORMATION CONTAINED HEREIN OR THE PRODUCT ITSELF
NEV11121-R Rev01

The logo for Revvity, featuring the word "revvity" in a lowercase, sans-serif font.