

IVISense™ MMP 645 FAST Fluorescent Probe

Product Number: NEV10100

DESCRIPTION

IVISense™ MMP 645 FAST Fluorescent Probe a member of a family of activatable fluorescent imaging agents comprising a novel architecture termed F.A.S.T. (Fluorescent Activatable Sensor Technology), that confers an improved pharmacokinetic profile with earlier imaging time points. This architecture offers higher target specific signal with reduced background while also reducing the optimal imaging time after injection.

IVISense™ MMP 645 FAST Fluorescent Probe is a matrix metalloproteinase (MMP) activatable agent that is optically silent upon injection and produces fluorescent signal after cleavage by disease related MMP's. Activation can occur by a broad range of MMP's including MMP 2, 3, 7, 9, 12, and 13. MMP activity is involved in many disease-related processes including cancer progression, invasion and metastasis, rheumatoid arthritis, pulmonary diseases and areas of cardiovascular disease. IVISense™ MMP 645 FAST Fluorescent Probe may be used to monitor the progression of these diseases or to evaluate the potential therapeutic efficacy of drugs targeting the underlying mechanisms involved in these diseases.

MATERIAL

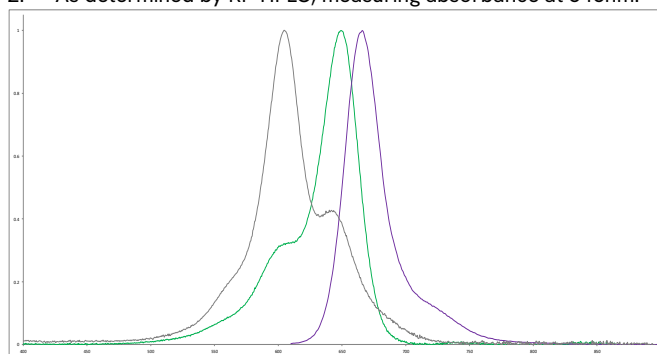
Each vial contains 48 nmol of IVISense™ MMP 645 FAST Fluorescent Probe in dry solid form. IVISense™ MMP 645 FAST Fluorescent Probe has been filtered through a 0.2 µm filter prior to drying. Reconstitute IVISense™ MMP 645 FAST Fluorescent Probe with 1.2 mL of 1 x PBS before injecting into animals. The packaged material provides sufficient reagent for imaging approximately 10 mice (weighing ~25 grams each) when using the recommended dose of 4 nmol (100 µL) of IVISense™ MMP 645 FAST Fluorescent Probe per mouse.

STORAGE & HANDLING

- Upon receipt, IVISense™ MMP 645 FAST Fluorescent Probe should be IMMEDIATELY STORED AT 2-8 °C AND PROTECTED FROM LIGHT.
- When stored and handled properly, IVISense™ MMP 645 FAST Fluorescent Probe is stable for six months in dry solid form from shipment date.
- Before opening the vial, check to ensure that all of the solid material is at the bottom of the vial.
- Once reconstituted, the PBS solution is stable up to 14 days when stored at 2-8 °C and protected from light.

Property	Specification
MW	~43,000 g mol ⁻¹
Fluorescence ¹	
• Excitation	649 nm
• Emission	666 nm
Absorbance ¹	649 nm (activated)
Purity ²	>90%
Appearance	Blue solid

1. Absorbance and fluorescence maxima in 1xPBS.
2. As determined by RP-HPLC, measuring absorbance at 645nm.



IN VIVO IMAGING & APPLICATIONS

- The recommended procedure for in vivo imaging with IVISense™ MMP 645 FAST Fluorescent Probe is administration via intravenous injection and imaging 6-24 hours post injection.
- IVISense™ MMP 645 FAST Fluorescent Probe will clear from tissues after approximately 96 hours. Repeat injection and imaging may be performed every four days for longitudinal studies. It is recommended that a pre-injection baseline image be taken prior to reinjection and imaging.
- IVISense™ MMO 645 FAST Fluorescent Probe enables imaging of tumors and inflammation in a broad range of oncology, pulmonary and cardiovascular applications.

The information provided in this document is for reference purposes only and may not be all-inclusive. Revvity, Inc., its subsidiaries, and/or affiliates (collectively, "Revvity") do not assume liability for the accuracy or completeness of the information contained herein. Users should exercise caution when handling materials as they may present unknown hazards. Revvity shall not be liable for any damages or losses resulting from handling or contact with the product, as Revvity cannot control actual methods, volumes, or conditions of use. Users are responsible for ensuring the product's suitability for their specific application. REVVITY EXPRESSLY DISCLAIMS ALL WARRANTIES, INCLUDING WARRANTIES OF MERCHANTABILITY OR FITNESS FOR A PARTICULAR PURPOSE, REGARDLESS OF WHETHER ORAL OR WRITTEN, EXPRESS, OR IMPLIED, ALLEGEDLY ARISING FROM ANY USAGE OF ANY TRADE OR ANY COURSE OF DEALING, IN CONNECTION WITH THE USE OF INFORMATION CONTAINED HEREIN OR THE PRODUCT ITSELF

NEV10100-R Rev01

The logo for Revvity, featuring the word "revvity" in a lowercase, sans-serif font.