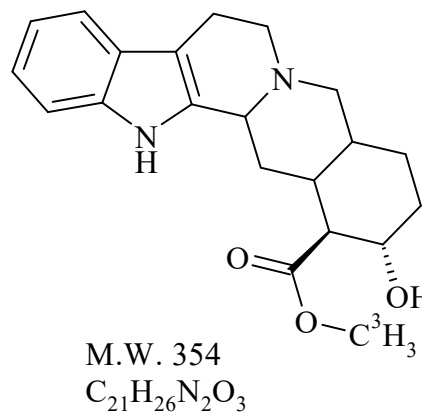


Rauwolscine, [Methyl- $^3\text{H}$ ]-

Product Number: NET722

**LOT SPECIFIC INFORMATION**

Lot Number:	3356441
Specific Activity:	74.0 Ci/mmol
	2738 GBq/mmol
Production Date:	21-Nov-2024



**PACKAGING:** 1.0 mCi/ml (37 MBq/ml) in an ethanol solution containing 0.25% of ascorbic acid, under nitrogen in a vial which protects the contents from UV light. Shipped in dry ice.

**STABILITY AND STORAGE RECOMMENDATIONS:** When rauwolscine, [methyl- $^3\text{H}$ ]- is stored at  $-80^\circ\text{C}$  in its original solvent and at its original concentration, the rate of decomposition is initially 0.9% for 1 month from date of purification. Stability is nonlinear and not correlated to isotope half-life. Lot to lot variation may occur.

**SPECIFIC ACTIVITY RANGE:**  $>70$  Ci/mmol ( $>2590$  GBq/mmol)

**RADIOCHEMICAL PURITY:** This product was initially found to be greater than 97% when determined by the following methods. The rate of decomposition can accelerate. It is advisable to check purity prior to use:

High pressure liquid chromatography on a C8 column using the following mobile phase:  
1% triethylammonium acetate, pH4 : acetonitrile, (8:2).

**QUALITY CONTROL:** The radiochemical purity of rauwolscine, [methyl- $^3\text{H}$ ]- is checked at appropriate intervals using listed chromatography method.

**HAZARD INFORMATION:** WARNING: This product contains a chemical known to the state of California to cause cancer.

**Limited Warranty:** The information provided in this document is valid for the specified lot number and date of analysis. This information is for reference purposes only and does not constitute a warranty or guarantee of the product's suitability for any specific use. Revvity, Inc., its subsidiaries, and/or affiliates (collectively, "Revvity") do not assume any liability for any errors or damages arising from the use of this document or the product described herein. REVVITY EXPRESSLY DISCLAIMS ALL WARRANTIES, INCLUDING WARRANTIES OF MERCHANTABILITY OR

FITNESS FOR A PARTICULAR PURPOSE, REGARDLESS OF WHETHER ORAL OR WRITTEN, EXPRESS OR IMPLIED, ALLEGEDLY ARISING FROM ANY USAGE OF ANY TRADE OR ANY COURSE OF DEALING, IN CONNECTION WITH THE USE OF INFORMATION CONTAINED HEREIN OR THE PRODUCT ITSELF.

NET722-R Rev01

revvity

Revvity, Inc.  
940 Winter Street  
Waltham, MA 02451 USA

(800) 762-4000  
[www.revvity.com](http://www.revvity.com)

For a complete listing of our global offices, visit [www.revvity.com](http://www.revvity.com)  
Copyright ©2023, Revvity, Inc. All rights reserved.