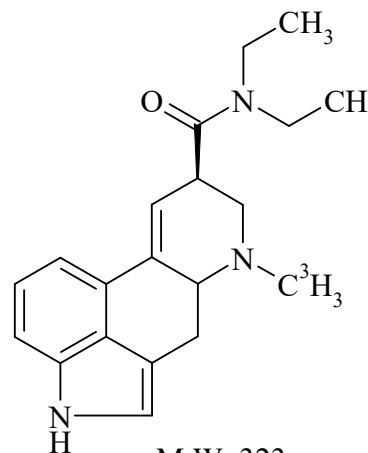


Lysergic Acid Diethylamide, [N-Methyl-³H]-

Product Number: NET638

LOT SPECIFIC INFORMATION

Lot Number:	3347435
Specific Activity:	80.0 Ci/mmol
	2960 GBq/mmol
Production Date:	28-OCT-2024



M.W. 323
C₂₀H₂₅N₃O

PACKAGING: 1.0 mCi/ml (37 MBq/ml) in ethanol, under argon in a vial which protects the contents from UV light. Shipped in dry ice.

STABILITY AND STORAGE RECOMMENDATIONS: When LSD, [N-methyl-³H]- is stored in its original solvent and at its original concentration, the rate of decomposition is initially 4% per month from date of purification. Stability is nonlinear and not correlated to isotope half-life. Lot to lot variation may occur.

LSD, [N-methyl-³H]- is stored in ethanol solution at -80°C in absolute darkness under argon.

SPECIFIC ACTIVITY RANGE: 60-87 Ci/mmol (2220 - 3219 GBq/mmol)

RADIOCHEMICAL PURITY: This product was initially found to be greater than 97% when determined by the following method. The rate of decomposition can accelerate. It is advisable to check purity prior to use:

High pressure liquid chromatography on a Zorbax Rx-C8 column using the following mobile phase:
acetonitrile : 1% triethylamine acetate, pH 4.0, (35:65).

QUALITY CONTROL: The radiochemical purity of LSD, [N-methyl-³H]- is checked at appropriate intervals using the listed chromatography method.

HAZARD INFORMATION: WARNING: This product contains a chemical known to the state of California to cause cancer.

Limited Warranty: The information provided in this document is valid for the specified lot number and date of analysis. This information is for reference purposes only and does not constitute a warranty or guarantee of the

product's suitability for any specific use. Revvity, Inc., its subsidiaries, and/or affiliates (collectively, "Revvity") do not assume any liability for any errors or damages arising from the use of this document or the product described herein. REVVITY EXPRESSLY DISCLAIMS ALL WARRANTIES, INCLUDING WARRANTIES OF MERCHANTABILITY OR FITNESS FOR A PARTICULAR PURPOSE, REGARDLESS OF WHETHER ORAL OR WRITTEN, EXPRESS OR IMPLIED, ALLEGEDLY ARISING FROM ANY USAGE OF ANY TRADE OR ANY COURSE OF DEALING, IN CONNECTION WITH THE USE OF INFORMATION CONTAINED HEREIN OR THE PRODUCT ITSELF.

NET638-R Rev01

revvity