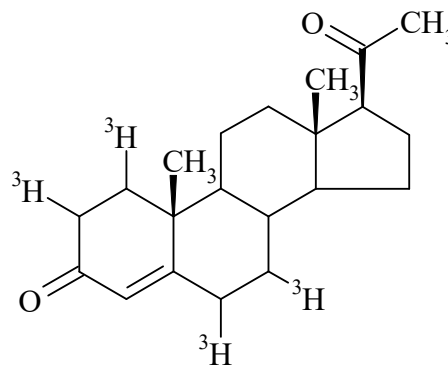


Progesterone, [1,2,6,7-³H(N)]-

Product Number: NET381

LOT SPECIFIC INFORMATION

Lot Number:	3284845
Specific Activity:	101.0 Ci/mmol
	3737 GBq/mmol
Production Date:	16-Apr-2024



M.W. 314
C₂₁H₃₀O₂

PACKAGING: 1.0 mCi/ml (37 MBq/ml) in ethanol. Shipped on dry ice.

STABILITY AND STORAGE RECOMMENDATIONS: When progesterone, [1,2,6,7-³H(N)]- is stored at -20°C in its original solvent and at its original concentration, the rate of decomposition is initially 1% for the first four months from date of purification. Stability is nonlinear and not correlated to isotope half-life. Lot to lot variation may occur.

SPECIFIC ACTIVITY RANGE: >90 Ci/mmol (>3330 GBq/mmol)

RADIOCHEMICAL PURITY: This product was initially found to be greater than 97% when determined by the following methods. The rate of decomposition can accelerate. It is advisable to check purity prior to use:

High pressure liquid chromatography on a C18 column using the following mobile phase:

(A) 0.1% H₃PO₄ in H₂O (B) acetonitrile

50% B for 10 minutes, followed by a linear gradient to 100% B in 15 minutes. % of B could be changed depending on column age

QUALITY CONTROL: The radiochemical purity of progesterone, [1,2,6,7-³H(N)]- is checked at appropriate intervals using the above listed chromatography method.

HAZARD INFORMATION: WARNING: This product contains a chemical known to the state of California to cause cancer.

Limited Warranty: The information provided in this document is valid for the specified lot number and date of analysis. This information is for reference purposes only and does not constitute a warranty or guarantee of the product's suitability for any specific use. Revvity, Inc., its subsidiaries, and/or affiliates (collectively, "Revvity") do not assume any liability for any errors or damages arising from the use of this document or the product described herein. REVVITY EXPRESSLY DISCLAIMS ALL WARRANTIES, INCLUDING WARRANTIES OF MERCHANTABILITY OR FITNESS FOR A PARTICULAR PURPOSE, REGARDLESS OF WHETHER ORAL OR WRITTEN, EXPRESS OR IMPLIED, ALLEGEDLY ARISING FROM ANY USAGE OF ANY TRADE OR ANY COURSE OF DEALING, IN CONNECTION WITH THE USE OF INFORMATION CONTAINED HEREIN OR THE PRODUCT ITSELF.

NET381-R Rev01

revvity