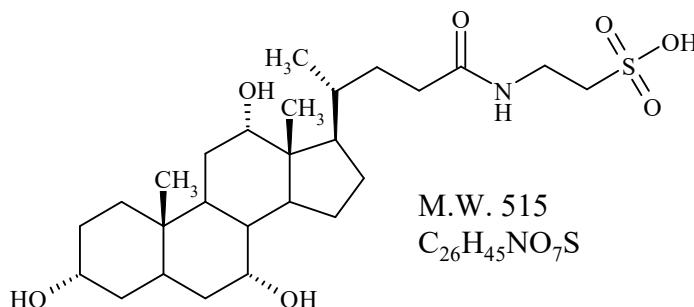


Taurocholic Acid, [ $^3\text{H}(\text{G})$ ]-

Product Number: NET322

LOT SPECIFIC INFORMATION

Lot Number:	3259067
Specific Activity:	5.4 Ci/mmol
	199.8 GBq/mmol
Production Date:	12 Mar 2024



**PACKAGING:** 1 mCi/ml (37 MBq/ml) in methanol:ethanol, (1:3).

**STABILITY AND STORAGE RECOMMENDATIONS:** When taurocholic acid, [ $^3\text{H}(\text{G})$ ]- is stored at 5°C in its original solvent and at its original concentration, the rate of decomposition is initially 1% for the first 6 months from date of purification. Stability is nonlinear and not correlated to isotope half-life. Lot to lot variation may occur.

**SPECIFIC ACTIVITY RANGE:** >3 Ci/mmol (>111 GBq/mmol)

**RADIOCHEMICAL PURITY:** This product was initially found to be greater than 97% when determined by the following methods. The rate of decomposition can accelerate. It is advisable to check purity prior to use:

High pressure liquid chromatography on a C18 column using the following mobile phase:

0.01M potassium phosphate, (pH 7.5) : acetonitrile (75/25) to (25/75), 10 min. linear gradient.

**QUALITY CONTROL:** The radiochemical purity of taurocholic acid, [ $^3\text{H}(\text{G})$ ]- is checked at appropriate intervals using the above listed chromatography method.

**HAZARD INFORMATION:** WARNING: This product contains a chemical known to the state of California to cause cancer.

**Limited Warranty:** The information provided in this document is valid for the specified lot number and date of analysis. This information is for reference purposes only and does not constitute a warranty or guarantee of the product's suitability for any specific use. Revvity, Inc., its subsidiaries, and/or affiliates (collectively, "Revvity") do not assume any liability for any errors or damages arising from the use of this document or the product described

herein. REVVITY EXPRESSLY DISCLAIMS ALL WARRANTIES, INCLUDING WARRANTIES OF MERCHANTABILITY OR FITNESS FOR A PARTICULAR PURPOSE, REGARDLESS OF WHETHER ORAL OR WRITTEN, EXPRESS OR IMPLIED, ALLEGEDLY ARISING FROM ANY USAGE OF ANY TRADE OR ANY COURSE OF DEALING, IN CONNECTION WITH THE USE OF INFORMATION CONTAINED HEREIN OR THE PRODUCT ITSELF.

NET322-R Rev01

revvity

Revvity, Inc.  
940 Winter Street  
Waltham, MA 02451 USA

(800) 762-4000  
[www.revvity.com](http://www.revvity.com)

For a complete listing of our global offices, visit [www.revvity.com](http://www.revvity.com)  
Copyright ©2023, Revvity, Inc. All rights reserved.