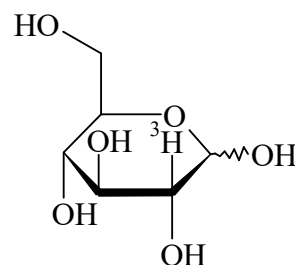


Glucose, D-[2- $^3\text{H}(\text{N})$]-

Product Number: NET238C

LOT SPECIFIC INFORMATION

Lot Number:	3271974
Specific Activity:	21.2 Ci/mmol
	784.4 GBq/mmol
Production Date:	01 Apr 2024

M.W. 180
 $\text{C}_6\text{H}_{12}\text{O}_6$ **PACKAGING:** 1.0 mCi/ml (37 MBq/ml) in ethanol:water, (9:1). Shipped in dry ice.**STABILITY AND STORAGE RECOMMENDATIONS:** When glucose, D-[2- $^3\text{H}(\text{N})$]- is stored at -20°C in its original solvent and at its original concentration, the rate of decomposition is initially 1% per year from date of purification. Stability is nonlinear and not correlated to isotope half-life. Lot to lot variation may occur.**SPECIFIC ACTIVITY RANGE:** 20-30 Ci/mmol (740-1110 GBq/mmol)**RADIOCHEMICAL PURITY:** This product was initially found to be greater than 97% when determined by the following methods. The rate of decomposition can accelerate. It is advisable to check purity prior to use:High pressure liquid chromatography on Aminex HPX-87H column using the following mobile phase:
0.01N sulfuric acid.**QUALITY CONTROL:** The radiochemical purity of glucose, D-[2- $^3\text{H}(\text{N})$]- is checked at appropriate intervals using the listed chromatography method.**HAZARD INFORMATION: WARNING:** This product contains a chemical known to the state of California to cause cancer.**Limited Warranty:** The information provided in this document is valid for the specified lot number and date of analysis. This information is for reference purposes only and does not constitute a warranty or guarantee of the product's suitability for any specific use. Revvity, Inc., its subsidiaries, and/or affiliates (collectively, "Revvity") do not assume any liability for any errors or damages arising from the use of this document or the product described herein. REVVITY EXPRESSLY DISCLAIMS ALL WARRANTIES, INCLUDING WARRANTIES OF MERCHANTABILITY OR FITNESS FOR A PARTICULAR PURPOSE, REGARDLESS OF WHETHER ORAL OR WRITTEN, EXPRESS OR IMPLIED,

ALLEGEDLY ARISING FROM ANY USAGE OF ANY TRADE OR ANY COURSE OF DEALING, IN CONNECTION WITH THE USE OF INFORMATION CONTAINED HEREIN OR THE PRODUCT ITSELF.

NET238C-R Rev01

revvity

Revvity, Inc.
940 Winter Street
Waltham, MA 02451 USA

(800) 762-4000
www.revvity.com

For a complete listing of our global offices, visit www.revvity.com
Copyright ©2023, Revvity, Inc. All rights reserved.