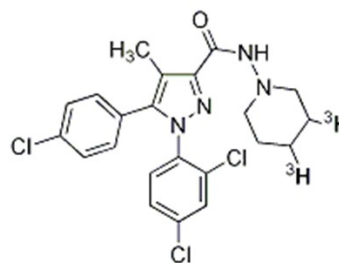


SR141716A, [ $^3\text{H}$ ]-

Product Number: NET1158

**LOT SPECIFIC INFORMATION**

Lot Number:	3421799
Specific Activity:	55.9 Ci/mmol
	2068 GBq/mmol
Production Date:	28-Jul-2025



M.W. 463.79  
C<sub>22</sub>H<sub>21</sub>Cl<sub>3</sub>N<sub>4</sub>O  
CAS 158681-13-1

**PACKAGING:** 0.2 mCi/ml (7.4 MBq/ml) in ethanol. Shipped in dry ice.

**STABILITY AND STORAGE RECOMMENDATIONS:** When SR141716A, [ $^3\text{H}$ ]- is stored at -20°C in its original solvent and at its original concentration, the rate of decomposition is initially less than 1% per month from the date of purification. The rate of decomposition can accelerate. Stability is nonlinear and not correlated to isotope half-life. Lot to lot variation may occur.

**SPECIFIC ACTIVITY RANGE:** 35-60 Ci/mmol (1295-2220 GBq/mmol)

**RADIOCHEMICAL PURITY:** This product was initially found to be greater than 95% when determined by the following method. It is advisable to check purity prior to use.

High pressure liquid chromatography on a C18 column using the following mobile phase:

10 minute linear gradient from 20% A/ 80% B to 100% B

A) water

B) methanol

**QUALITY CONTROL:** The radiochemical purity of SR141716A, [ $^3\text{H}$ ]- is checked at appropriate intervals using the above chromatography method.

**HAZARD INFORMATION:** WARNING: This product contains a chemical known to the state of California to cause cancer.

**Limited Warranty:** The information provided in this document is valid for the specified lot number and date of analysis. This information is for reference purposes only and does not constitute a warranty or guarantee of the product's suitability for any specific use. Revvity, Inc., its subsidiaries, and/or affiliates (collectively, "Revvity") do not assume any liability for any errors or damages arising from the use of this document or the product described herein. REVVITY EXPRESSLY DISCLAIMS ALL WARRANTIES, INCLUDING WARRANTIES OF MERCHANTABILITY OR FITNESS FOR A PARTICULAR PURPOSE, REGARDLESS OF WHETHER ORAL OR WRITTEN, EXPRESS OR IMPLIED, ALLEGEDLY ARISING FROM ANY USAGE OF ANY TRADE OR ANY COURSE OF DEALING, IN CONNECTION WITH THE USE OF INFORMATION CONTAINED HEREIN OR THE PRODUCT ITSELF.

NET1158-R Rev01

revvity