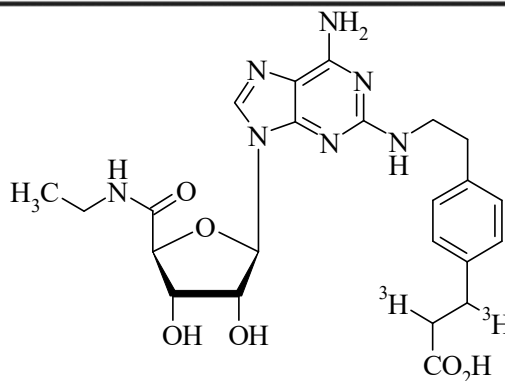


CGS 21680, [Carboxyethyl-³H(N)]-

Product Number: NET1021

LOT SPECIFIC INFORMATION

Lot Number:	3313809
Specific Activity:	20.1 Ci/mmol
	744 GBq/mmol
Production Date:	30-Sep-2024



M.W. 499
C₂₃H₂₉N₇O₆

PACKAGING: 1 mCi/ml (37 MBq/ml) in 70% ethanol, under argon, in a silanized vial. Shipped in dry ice.

STABILITY AND STORAGE RECOMMENDATIONS: The stability of CGS 21680, [carboxyethyl-³H(N)]- is currently being evaluated. Initial studies indicate that when CGS 21680, [carboxyethyl-³H(N)]- is stored at -20°C in its original solvent and at its original concentration, the rate of decomposition is initially 1% for 3 months from date of purification. Stability is nonlinear and not correlated to isotope half-life.

SPECIFIC ACTIVITY RANGE: >18 Ci/mmol (666 GBq/mmol)

RADIOCHEMICAL PURITY: This product was initially found to be greater than 97% when determined by the following method. The rate of decomposition can accelerate. It is advisable to check purity prior to use:

High pressure liquid chromatography on a Vydac Proteins and Peptides C₁₈ column using the following mobile phase:

0.2% trifluoroacetic acid : acetonitrile, (80:20).

QUALITY CONTROL: The radiochemical purity of CGS 21680, [carboxyethyl-³H(N)]- is checked at appropriate intervals using the listed chromatography method.

HAZARD INFORMATION: WARNING: This product contains a chemical known to the state of California to cause cancer.

Limited Warranty: The information provided in this document is valid for the specified lot number and date of analysis. This information is for reference purposes only and does not constitute a warranty or guarantee of the

product's suitability for any specific use. Revvity, Inc., its subsidiaries, and/or affiliates (collectively, "Revvity") do not assume any liability for any errors or damages arising from the use of this document or the product described herein. REVVITY EXPRESSLY DISCLAIMS ALL WARRANTIES, INCLUDING WARRANTIES OF MERCHANTABILITY OR FITNESS FOR A PARTICULAR PURPOSE, REGARDLESS OF WHETHER ORAL OR WRITTEN, EXPRESS OR IMPLIED, ALLEGEDLY ARISING FROM ANY USAGE OF ANY TRADE OR ANY COURSE OF DEALING, IN CONNECTION WITH THE USE OF INFORMATION CONTAINED HEREIN OR THE PRODUCT ITSELF.

NET1021-R Rev01

revvity