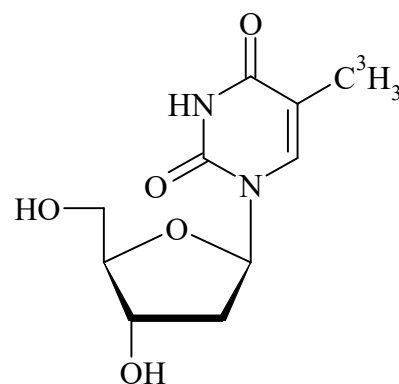


Thymidine, [Methyl- $^3\text{H}$ ]-

Product Number: NET027

**LOT SPECIFIC INFORMATION**

Lot Number:	202310
Production Date:	19-Sep-2023

M.W. 242  
 $\text{C}_{10}\text{H}_{14}\text{N}_2\text{O}_5$ **PACKAGING:** 1 mCi/mL (37 MBq/mL) in aqueous solution, steri-packaged.**STABILITY AND STORAGE RECOMMENDATIONS:**

When Thymidine, [methyl- $^3\text{H}$ ]- is stored at refrigerated temperatures (5°C), in its original solvent and at its original concentration, the rate of decomposition is initially 4-5% per month. Stability is non-linear and not correlated to isotope half-life. Lot to lot variation may occur.

**SPECIFIC ACTIVITY RANGE:** 6.7 Ci/mmol (248 GBq/mmol)**RADIOCHEMICAL PURITY:** This product was initially found to be greater than 97% when determined using the following method. The rate of decomposition can accelerate.

High pressure liquid chromatography on a C18 column using the following mobile phase:  
water : formic acid (conc.) : acetonitrile, (95:5:0.5).

**HAZARD INFORMATION: WARNING:** This product contains a chemical known to the state of California to cause cancer.**Limited Warranty:** The information provided in this document is valid for the specified lot number and date of analysis. This information is for reference purposes only and does not constitute a warranty or guarantee of the

product's suitability for any specific use. Revvity, Inc., its subsidiaries, and/or affiliates (collectively, "Revvity") do not assume any liability for any errors or damages arising from the use of this document or the product described herein. REVVITY EXPRESSLY DISCLAIMS ALL WARRANTIES, INCLUDING WARRANTIES OF MERCHANTABILITY OR FITNESS FOR A PARTICULAR PURPOSE, REGARDLESS OF WHETHER ORAL OR WRITTEN, EXPRESS OR IMPLIED, ALLEGEDLY ARISING FROM ANY USAGE OF ANY TRADE OR ANY COURSE OF DEALING, IN CONNECTION WITH THE USE OF INFORMATION CONTAINED HEREIN OR THE PRODUCT ITSELF.

NET027-R Rev01

The Revvity logo is located in the bottom right corner of the page. It consists of the word "revvity" in a lowercase, sans-serif font. The letters are black, and the overall style is clean and modern.