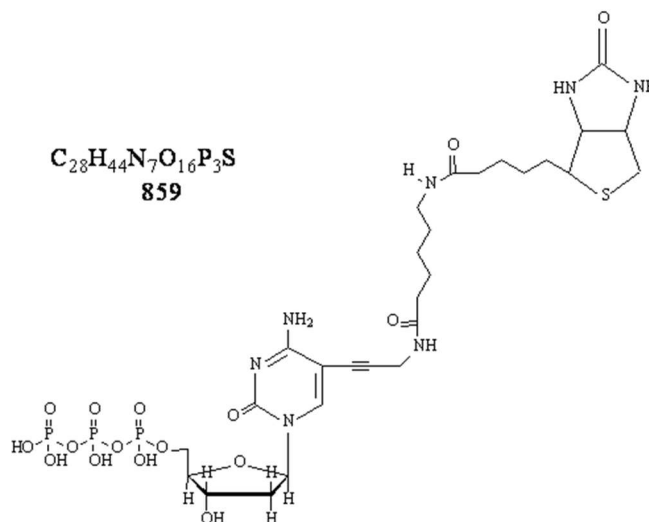
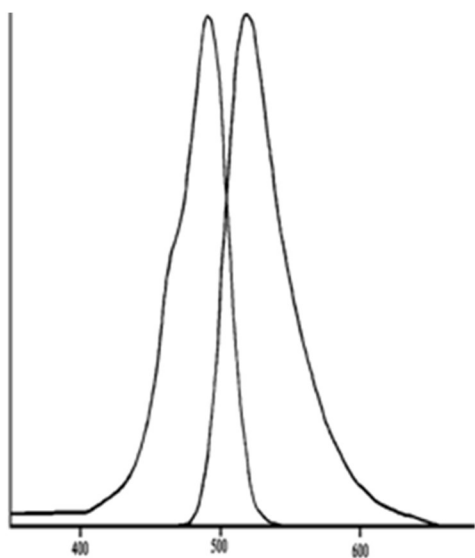


BIOTIN-11-dCTP

Product Number: NEL538D001EA Lot 3359614

QUANTITY: 1000 nmol
FORM: 1.0 mL solution
CONCENTRATION: 1.0 mM
SOLVENT: 10 mM Tris-HCl, pH 7.6, 1 mM EDTA
FORMULA: C₂₈H₄₄N₇O₁₆P₃S **FW = 859**
EXTINCTION COEFFICIENT: 9,300 M⁻¹cm⁻¹
 (294 nm, Phosphate buffer, pH = 7)



EXCITATION MAXIMUM: 294 nm

INTRODUCTION

Nucleotide analogs^{1,2,3} are biologically active with a variety of DNA and/or RNA polymerases. Labeling methods such as: nick translation, random priming, polymerase chain reaction, 3'-end labeling, or transcription of RNA using SP6, T3, or T7 RNA polymerases may be used. Some analogs demonstrate variations in relative performance depending upon nucleotide and label (fluorophore or hapten) selected due to enzyme preferences. Labeled probes may be used in applications including (but not limited to) chromosome mapping. These analogs are intended to be detected either directly by their fluorescence when using a fluorescently labeled analog or indirectly when appropriately labeled antibodies or streptavidin are available. Indirect detection may be either colorimetric, chemi-luminescence, or fluorescence. Signal amplification may be obtained using NEN's patented Tyramide Signal Amplification process (TSA™).

Quality Control

The nucleotide analog is purified by HPLC chromatography. Analytical HPLC is used as a quality control check to ensure chemical and isomeric purity >95%. UV/VIS absorption spectra are obtained in aqueous phosphate buffer to determine concentration. Relative fluorescence quantum yields are not necessarily the same for the four different base nucleotide analogs.

Stability and Storage Conditions

Nucleotides labeled with fluorophores should be protected from extended exposure to light. These nucleotide analogs are stable kept in a refrigerator or colder for at least 1 year. Minimizing freeze-thaw cycles and exposure to light are most critical factors to consider for long term usage.

The information provided in this document is for reference purposes only and may not be all-inclusive. Revvity, Inc., its subsidiaries, and/or affiliates (collectively, "Revvity") do not assume liability for the accuracy or completeness of the information contained herein. Users should exercise caution when handling materials as they may present unknown hazards. Revvity shall not be liable for any damages or losses resulting from handling or contact with the product, as Revvity cannot control actual methods, volumes, or conditions of use. Users are responsible for ensuring the product's suitability for their specific application. REVVITY EXPRESSLY DISCLAIMS ALL WARRANTIES, INCLUDING WARRANTIES OF MERCHANTABILITY OR FITNESS FOR A PARTICULAR PURPOSE, REGARDLESS OF WHETHER ORAL OR WRITTEN, EXPRESS OR IMPLIED, ALLEGEDLY ARISING FROM ANY USAGE OF ANY TRADE OR ANY COURSE OF DEALING, IN CONNECTION WITH THE USE OF INFORMATION CONTAINED HEREIN OR THE PRODUCT ITSELF

NEL538D001EA-R REV01

The Revvity logo consists of the word "revvity" in a lowercase, sans-serif font. The letters are black and have a modern, clean appearance.