



## AlphaLISA<sup>®</sup> TIMP-2 (Human) Detection Kit

**Product number:** AL3091 HV/C/F

Research Use Only. Not for use in diagnostic procedures.

### Product Information

- Application:** This kit is designed for the quantitative determination of Human Tissue Inhibitor of Metalloproteinases-2 (hTIMP-2) in serum and cell culture media using a homogeneous AlphaLISA assay (no wash steps).
- Sensitivity:** Lower Detection Limit (LDL): 2.8 pg/mL  
Lower Limit of Quantification (LLOQ): 9.5 pg/mL  
EC<sub>50</sub>: 21.2 ng/mL
- Dynamic range:** 2.8 – 300 000 pg/mL

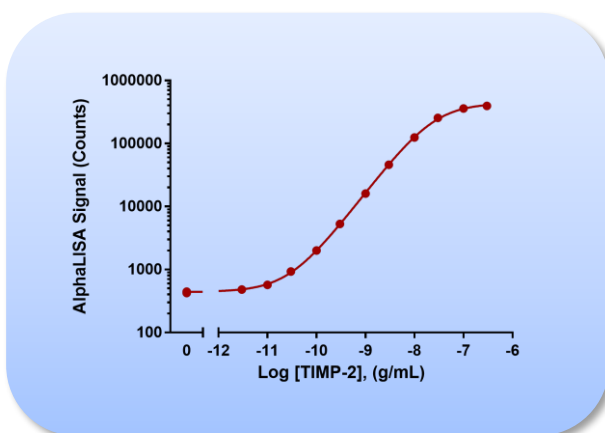


Figure 1. Typical sensitivity curve in AlphaLISA Immunoassay Buffer. The data was generated using a white Optiplate<sup>™</sup>-384 microplate and the EnVision<sup>®</sup> Multilabel Plate Reader 2102 with Alpha option.

- Storage:** Store kit in the dark at +4 °C. For reconstituted analyte aliquot and store at -20 °C. Avoid freeze-thaw cycles.
- Stability:** This kit is stable for at least 12 months from the manufacturing date when stored in its original packaging and the recommended storage conditions.

## Analyte of Interest

TIMP-2 is also known as Tissue inhibitor of metalloproteinases 2. TIMPs (TIMP-1, TIMP-2, TIMP-3, and TIMP-4) are a family of proteins that regulate the activation and proteolytic activity of matrix metalloproteinases (MMPs). In addition as a role as an inhibitor that regulates matrix metalloproteinases, TIMP-2 also has a unique role among TIMP family members in its ability to directly suppress the proliferation of endothelial cells. Thus TIMP-2 may be critical to the maintenance of tissue homeostasis by suppressing the proliferation of quiescent tissues in response to angiogenic factors, and by inhibiting protease activity in tissues undergoing remodeling of the extracellular matrix. TIMP-2 might serve as a biomarker for cancer.

## Description of the AlphaLISA Assay

AlphaLISA technology allows the detection of molecules of interest in buffer, cell culture media, and serum in a highly sensitive, quantitative, reproducible and user-friendly mode. In this AlphaLISA assay, a Biotinylated Anti-hTIMP-2 Antibody binds to the Streptavidin-coated Alpha Donor beads, while another Anti-hTIMP-2 Antibody is conjugated to AlphaLISA Acceptor beads. In the presence of the hTIMP-2, the beads come into close proximity. The excitation of the Donor beads provokes the release of singlet oxygen molecules that triggers a cascade of energy transfer in the Acceptor beads, resulting in a sharp peak of light emission at 615 nm (Figure 2).

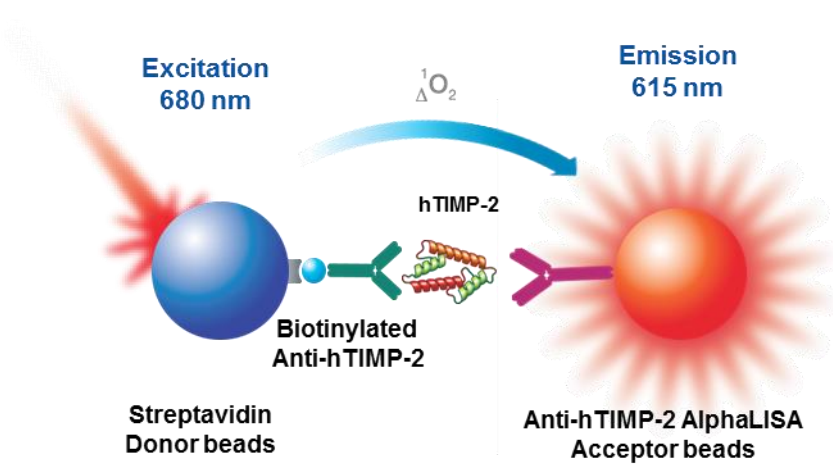


Figure 2. AlphaLISA hTIMP-2 Assay Principle.

## Precautions

- The Alpha Donor beads are light-sensitive. All the other assay reagents can be used under normal light conditions. All Alpha assays using the Donor beads should be performed under subdued laboratory lighting (< 100 lux). Green filters (LEE 090 filters (preferred) or Roscolux filters #389 from Rosco) can be applied to light fixtures.
- Take precautionary measures to avoid contamination of the reagent solutions.
- The Biotinylated Anti-Analyte Antibody contains sodium azide. Contact with skin or inhalation should be avoided.

## Kit Content: Reagents and Materials

Kit components	AL3091HV (100 assay points <sup>***</sup> )	AL3091C (500 assay points <sup>***</sup> )	AL3091F (5000 assay points <sup>***</sup> )
AlphaLISA Anti-hTIMP-2 Acceptor beads stored in PBS, 0.05% Kathon, pH 7.2	20 µL @ 5 mg/mL (1 brown tube, <u>white</u> cap)	50 µL @ 5 mg/mL (1 brown tube, <u>white</u> cap)	500 µL @ 5 mg/mL (1 brown tube, <u>white</u> cap)
Streptavidin (SA)-coated Donor beads stored in 25 mM HEPES, 100 mM NaCl, 0.05% Kathon, pH 7.4	40 µL @ 5 mg/mL (1 brown tube, <u>black</u> cap)	100 µL @ 5 mg/mL (1 brown tube, <u>black</u> cap)	1 mL @ 5 mg/mL (1 brown tube, <u>black</u> cap)
Biotinylated Anti-hTIMP-2 Antibody stored in PBS, 0.1% Tween-20, 0.05% NaN <sub>3</sub> , pH 7.4	20 µL @ 500 nM (1 tube, <u>black</u> cap)	50 µL @ 500 nM (1 tube, <u>black</u> cap)	500 µL @ 500 nM (1 tube, <u>black</u> cap)
Lyophilized Recombinant hTIMP-2*	1 µg (1 tube, <u>clear</u> cap)	1 µg (1 tube, <u>clear</u> cap)	1 µg (1 tube, <u>clear</u> cap)
AlphaLISA Immunoassay Buffer (10X)**	2 mL, 1 small bottle	10 mL, 1 medium bottle	100 mL, 1 large bottle

\* Reconstitute lyophilized analyte in 100 µL Milli-Q® grade H<sub>2</sub>O. The reconstituted analyte should be used within 60 minutes or aliquoted into screw-capped polypropylene vials and stored at -20 C for future experiments. Avoid freeze-thaw cycles. One vial contains an amount of analyte sufficient for performing 10 standard curves. Additional vials can be ordered separately (cat # AL3091S).

\*\* Extra buffer can be ordered separately (cat # AL000C: 10 mL, cat # AL000F: 100 mL).

\*\*\* The number of assay points is based on an assay volume of 100 µL in 96-well plates or 50 µL in 96- or 384-well assay plates using the kit components at the recommended concentrations.

Sodium azide should **not** be added to the stock reagents. High concentrations of sodium azide (> 0.001 % final in the assay) might decrease the AlphaLISA signal. Note that sodium azide from the Biotinylated Antibody stock solution will not interfere with the AlphaLISA signal (0.0001% final in the assay).

### Specific additional required reagents and materials:

The following materials are recommended:

Item	Suggested source	Catalog #
TopSeal™-A Plus Adhesive Sealing Film	Revvity Inc.	6050185
EnVision®-Alpha Reader	Revvity Inc.	-

## Recommendations

IMPORTANT: PLEASE READ THE RECOMMENDATIONS BELOW BEFORE USE

- The volume indicated on each tube is guaranteed for single pipetting. Multiple pipetting of the reagents may reduce the theoretical amount left in the tube. To minimize loss when pipetting beads, it is preferable not to pre-wet the tip.
- Centrifuge all tubes (including lyophilized analyte) before use to improve recovery of content (2000g, 10-15 sec). Re-suspend all reagents by vortexing before use.
- Use Milli-Q® grade H<sub>2</sub>O to dilute 10X AlphaLISA Immunoassay Buffer and to reconstitute the lyophilized analyte.
- When diluting the standard or samples, change tips between each standard or sample dilution. When loading reagents in the assay microplate, change tips between each standard or sample addition and after each set of reagents.
- When reagents are added to the microplate, make sure the liquids are at the bottom of the well.
- Small volumes may be prone to evaporation. It is recommended to cover microplates with TopSeal-A Adhesive Sealing Films to reduce evaporation during incubation. Microplates can be read with the TopSeal-A Film in place.
- The AlphaLISA signal is detected with an EnVision Multilabel Plate Reader equipped with the Alpha option using the AlphaScreen standard settings (e.g. Total Measurement Time: 550 ms, Laser 680 nm Excitation Time: 180 ms, Mirror: D640as, Emission Filter: M570w, Center Wavelength 570 nm, Bandwidth 100 nm, Transmittance 75%).
- AlphaLISA signal will vary with temperature and incubation time. For consistent results, identical incubation times and temperature should be used for each plate.
- The standard curves shown in this technical data sheet are provided for information only. A standard curve must be generated for each experiment.

## Assay Procedure

- The manual described below is an example for generating one standard curve in a 50 µL final assay volume (48 wells, triplicate determinations). The manuals also include testing samples in 452 wells. If different amount of samples are tested, the volumes of all reagents have to be adjusted accordingly, as shown in the table below. These calculations do not include excess reagent to account for losses during transfer of solutions or dead volumes.
- The standard dilution manual is provided for information only. As needed, the number of replicates or the range of concentrations covered can be modified.
- Use of four background points in triplicate (12 wells) is recommended when LDL/LLOQ is calculated. One background point in triplicate (3 wells) can be used when LDL/LLOQ is not calculated.

Format	# of data points	Volume				Plate recommendation
		Final	Sample	MIX AlphaLISA AccBeads + biotinylated Ab	SA-Donor beads	
AL3091HV	100	100 µL	10 µL	40 µL	50 µL	White OptiPlate-96 (cat # 6005290) White ½ AreaPlate-96 (cat # 6005560)
AL3091C	250	100 µL	10 µL	40 µL	50 µL	White OptiPlate-96 (cat # 6005290) White ½ AreaPlate-96 (cat # 6005560)
	500	50 µL	5 µL	20 µL	25 µL	White ½ AreaPlate-96 (cat # 6005560) White OptiPlate-384 (cat # 6007290) Light gray AlphaPlate™-384 (cat # 6005350)
	1 250	20 µL	2 µL	8 µL	10 µL	Light gray AlphaPlate-384 (cat # 6005350) ProxiPlate™-384 Plus (cat # 6008280) White OptiPlate-384 (cat # 6007290)
	2 500	10 µL	1 µL	4 µL	5 µL	Light gray AlphaPlate-1536 (cat # 6004350)
AL3091F	5 000	50 µL	5 µL	20 µL	25 µL	White ½ AreaPlate-96 (cat # 6005560) White OptiPlate-384 (cat # 6007290) Light gray AlphaPlate-384 (cat # 6005350)
	12 500	20 µL	2 µL	8 µL	10 µL	Light gray AlphaPlate-384 (cat # 6005350) ProxiPlate-384 Plus (cat # 6008280) White OptiPlate-384 (cat # 6007290)
	25 000	10 µL	1 µL	4 µL	5 µL	Light gray AlphaPlate-1536 (cat # 6004350)

**2 Step Manual described below is for 500 assay points including one standard curve (48 wells) and samples (452 wells). If different amount of samples are tested, the volumes of all reagents have to be adjusted accordingly.**

- 1) Preparation of 1X AlphaLISA Immunoassay Buffer:  
Add 5 mL of 10X AlphaLISA Immunoassay Buffer to 45 mL Milli-Q® grade H<sub>2</sub>O.
- 2) Preparation of hTIMP-2 analyte standard dilutions:
  - a. Reconstitute lyophilized hTIMP-2 (1 µg) in 100 µL Milli-Q® grade H<sub>2</sub>O. The reconstituted analyte should be used within 60 minutes or aliquoted into screw-capped polypropylene vials and stored at -20°C for future experiments.
  - b. Prepare standard dilutions as follows in 1X AlphaLISA Immunoassay Buffer (change tip between each standard dilution):

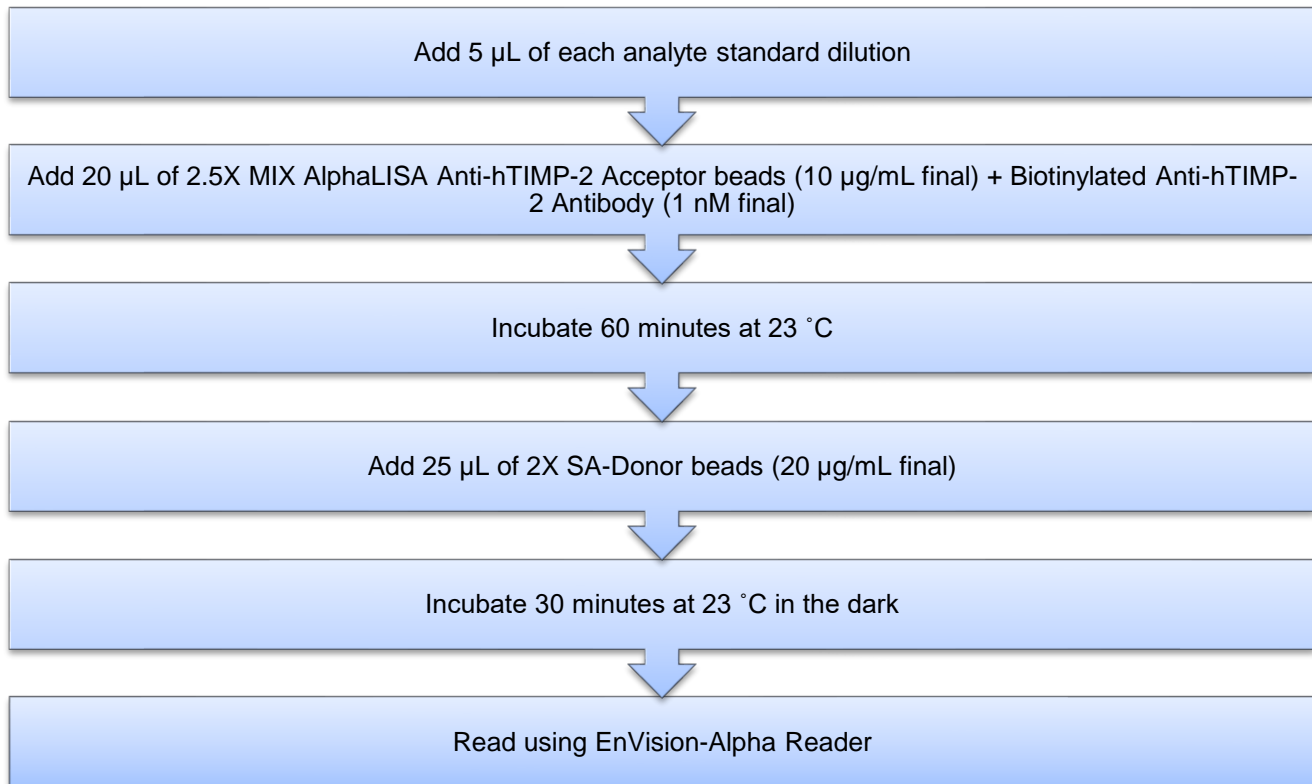
Tube	Vol. of hTIMP-2 (µL)	Vol. of diluent (µL) *	[hTIMP-2] in standard curve	
			(g/mL in 5 µL)	(pg/mL in 5 µL)
A	10 µL of 10 µg/mL hTIMP-2	90	1.00E-06	1 000 000
B	60 µL of tube A	140	3.00E-07	300 000
C	60 µL of tube B	120	1.00E-07	100 000
D	60 µL of tube C	140	3.00E-08	30 000
E	60 µL of tube D	120	1.00E-08	10 000
F	60 µL of tube E	140	3.00E-09	3000
G	60 µL of tube F	120	1.00E-09	1000
H	60 µL of tube G	140	3.00E-10	300
I	60 µL of tube H	120	1.00E-10	100
J	60 µL of tube I	140	3.00E-11	30
K	60 µL of tube J	120	1.00E-11	10
L	60 µL of tube K	140	3.00E-12	3
M ** (background)	0	100	0	0
N ** (background)	0	100	0	0
O ** (background)	0	100	0	0
P ** (background)	0	100	0	0

\* Dilute standards in diluent (e.g. 1X AlphaLISA Immunoassay Buffer).  
At low concentrations of analyte, a significant amount of analyte can bind to the vial. Therefore, load the analyte standard dilutions in the assay microplate within 60 minutes of preparation.

\*\* Four background points in triplicate (12 wells) are used when LDL is calculated. If LDL does not need to be calculated, one background point in triplicate can be used (3 wells).

- 3) Preparation of 2.5X MIX Anti-hTIMP-2 AlphaLISA Acceptor beads (25 µg/mL) + biotinylated Anti-hTIMP-2 antibody (2.5 nM):
  - a. Prepare just before use.
  - b. Add 50 µL Anti-hTIMP-2 Acceptor beads and 50 µL 500 nM biotinylated Anti-hTIMP-2 antibody to 9 900 µL of 1X AlphaLISA Immunoassay Buffer.
- 4) Preparation of 2X Streptavidin (SA) Donor beads (40 µg/mL):
  - a. Prepare just before use.
  - b. Keep the beads under subdued laboratory lighting.
  - c. Add 100 µL of 5 mg/mL SA-Donor beads to 12 400 µL of 1X AlphaLISA Immunoassay Buffer.

5) In a white Optiplate (384 wells):



## Data Analysis

- Calculate the average count value for the background wells.
- Generate a standard curve by plotting the AlphaLISA counts versus the concentration of analyte. A log scale can be used for either or both axes. No additional data transformation is required.
- Analyze data according to a nonlinear regression using the 4-parameter logistic equation (sigmoidal dose-response curve with variable slope) and a  $1/Y^2$  data weighting (the values at maximal concentrations of analyte after the hook point should be removed for correct analysis).
- The LDL is calculated by interpolating the average background counts (12 wells without analyte) + 3 x standard deviation value (average background counts + (3xSD)) on the standard curve.
- The LLOQ as measured here is calculated by interpolating the average background counts (12 wells without analyte) + 10 x standard deviation value (average background counts + (10xSD)) on the standard curve. Alternatively, the true LLOQ can be determined by spiking known concentrations of analyte in the matrix and measuring the percent recovery, and then determining the minimal amount of spiked analyte that can be quantified within a given limit (usually +/- 20% or 30% of the real concentration).
- Read from the standard curve the concentration of analyte contained in the samples.
- If samples have been diluted, the concentration read from the standard curve must be multiplied by the dilution factor.

## Assay Performance Characteristics

AlphaLISA assay performance described below was determined using the 2 step manual using AlphaLISA Immunoassay Buffer (IAB) as assay buffer. The analytes (standards) were prepared in IAB, DMEM + 10% FBS, RPMI + 10% FBS, or 100% FBS and all other components were prepared in IAB.

- Assay Sensitivity:

The LDL was calculated as described above. The values correspond to the lowest concentration of analyte that can be detected in a volume of 5  $\mu$ L sample using the recommended assay conditions.

LDL (pg/mL)*	(Analyte diluent)	# of experiments
2.8	IAB	9
2.3	DMEM + 10% FBS	6
39.2	RPMI + 10% FBS	6
4.1	100% FBS	6

\* Note that LDL can be decreased (i.e. sensitivity increased) by increasing the volume of analyte in the assay (e.g. use 10  $\mu$ L of analyte in a final assay volume of 50  $\mu$ L).

- Assay Precision:

The following assay precision data were calculated from the three independent assays using two different kit lots. In each lot, the analytes were prepared in IAB, DMEM + 10% FBS, RPMI + 10% FBS or 100% FBS. All other components were prepared in IAB. Each assay consisted of one standard curve comprising 12 data points (each in triplicate) and 12 background wells (no analytes). The assays were performed in 384-well format.

- Intra-assay precision:

The intra-assay precision was determined using a total of 16 independent determinations in triplicate. Shown as CV%.

hTIMP-2	IAB	DMEM + 10% FBS	RPMI + 10% FBS	100% FBS
CV (%)	7	8	9	9

- Inter-assay precision:

The inter-assay precision was determined using a total of 3 independent determinations with 9 measurements for 10 ng/mL sample. Shown as CV%.

hTIMP-2	IAB	DMEM + 10% FBS	RPMI + 10% FBS	100% FBS
CV (%)	9	9	13	17



- Spike Recovery:

Three known concentrations of analyte were spiked into IAB, DMEM + 10% FBS, RPMI + 10% FBS, or 100% FBS. All samples, including non-spiked diluents were measured in the assay. Note that the analytes for the respective standard curves were prepared in IAB, DMEM + 10% FBS, RPMI + 10% FBS, or 100% FBS. All other assay components were diluted in IAB.

Spiked hTIMP-2 (ng/mL)	% Recovery			
	IAB	DMEM + 10% FBS	RPMI + 10% FBS	100% FBS
30	102	106	104	87
10	80	108	107	86
3	80	115	97	101

- Specificity:

Cross-reactivity of the hTIMP-2 AlphaLISA Kit was tested using the following proteins at 100 ng/mL in IAB.

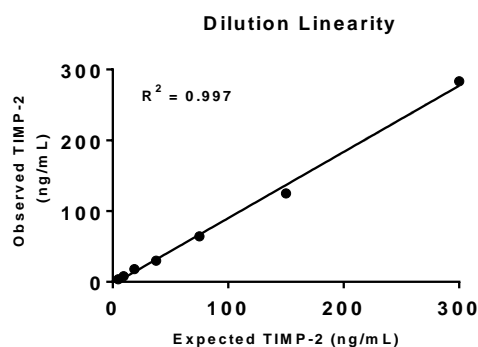
Tested Proteins	% Cross Reactivity
hTIMP-1	0

- Human serum Serum Experiments

- Dilution Linearity

Normal Human Serum and hTIMP-2-spiked (1000 ng/ml) Normal Human Serum samples were diluted with 100% FBS and the assay was performed along with a standard curve prepared in 100% FBS. Concentrations of hTIMP-2 in diluted human serum were determined by interpolating to the standard curve. In normal human serum, 242 ng/mL hTIMP-2 (average of 3 experiments) was detected when the samples were diluted  $\geq 32$  fold. Excellent dilution linearity ( $R^2 = 0.997$ ) was achieved in the hTIMP-2-spiked human serum samples that was diluted  $\geq 32$  fold. The results are shown in table and figure below.

Dilution Factor (x)	Expected hTIMP-2 (ng/mL)	Observed hTIMP-2 (ng/mL)
32	300.0	283.3
128	150.0	125.0
256	75.0	64.4
512	37.5	30.0
1024	18.8	17.9



- Spike Recovery

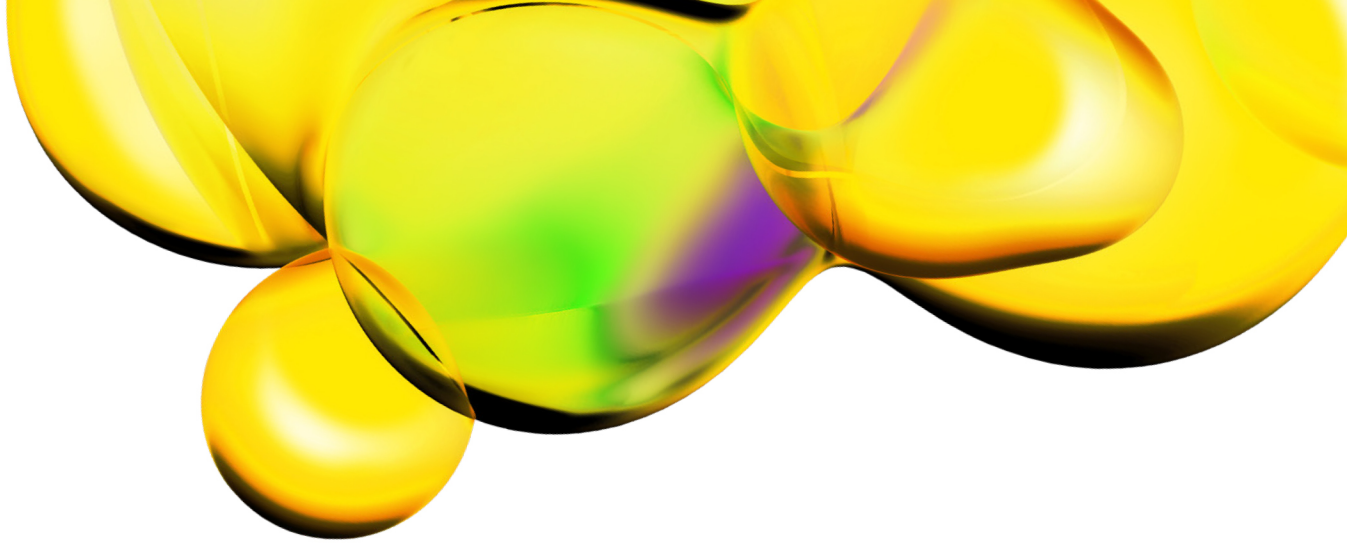
Three known amounts of hTIMP-2 were spiked into Normal Human Serum (320, 960 and 3200 ng/mL hTIMP-2 in spiked samples) and then the samples were diluted 32-fold into 100% FBS (final concentration is 10, 30 and 100 ng/mL). The standard was prepared in 100% FBS and all other reagents were prepared in IAB. The spike recoveries of hTIMP-2 were determined and the results are shown in table below. \*Recoveries were calculated after the endogenous hTIMP-2 level was subtracted (in this case, 235 ng/mL in normal human serum).

	Diluent: 100% FBS	
	Spiked sample (Normal Human Serum)	
Spike (ng/mL)	Concentration (ng/mL)*	Recovery (%)
No spike	235	NA
320	271.6	85
960	794.4	83
3200	2493.7	78

## Troubleshooting Guide

You will find detailed recommendations for common situations you might encounter with your AlphaLISA Assay kit at: [www.revvity.com](http://www.revvity.com)

**FOR RESEARCH USE ONLY. NOT FOR USE IN DIAGNOSTIC PROCEDURES.**



The information provided in this document is for reference purposes only and may not be all-inclusive. Revvity, Inc., its subsidiaries, and/or affiliates (collectively, "Revvity") do not assume liability for the accuracy or completeness of the information contained herein. Users should exercise caution when handling materials as they may present unknown hazards. Revvity shall not be liable for any damages or losses resulting from handling or contact with the product, as Revvity cannot control actual methods, volumes, or conditions of use. Users are responsible for ensuring the product's suitability for their specific application. REVVITY EXPRESSLY DISCLAIMS ALL WARRANTIES, INCLUDING WARRANTIES OF MERCHANTABILITY OR FITNESS FOR A PARTICULAR PURPOSE, REGARDLESS OF WHETHER ORAL OR WRITTEN, EXPRESS OR IMPLIED, ALLEGEDLY ARISING FROM ANY USAGE OF ANY TRADE OR ANY COURSE OF DEALING, IN CONNECTION WITH THE USE OF INFORMATION CONTAINED HEREIN OR THE PRODUCT ITSELF

[www.revvity.com](http://www.revvity.com)

revvity

**Revvity, Inc.**  
940 Winter Street  
Waltham, MA 02451 USA  
[www.revvity.com](http://www.revvity.com)

For a complete listing of our global offices, visit [www.revvity.com](http://www.revvity.com)  
Copyright ©2023, Revvity, Inc. All rights reserved.