



AlphaLISA[®] HLA-C (Human) Detection Kit

Product number: AL3061 HV/C/F

Research Use Only. Not for use in diagnostic procedures.

Product Information

- Application:** This kit is designed for the quantitative determination of human HLA-C in cell culture medias and cell lysate using a homogeneous AlphaLISA assay (no wash steps). The assay shows 4.1% cross reactivity with human HLA-E.
- Sensitivity:** Lower Detection Limit (LDL): 56 pg/mL
Lower Limit of Quantification (LLOQ): 193 pg/mL
EC₅₀: 21.6 ng/mL
- Dynamic range:** 56 – 300 000 pg/mL

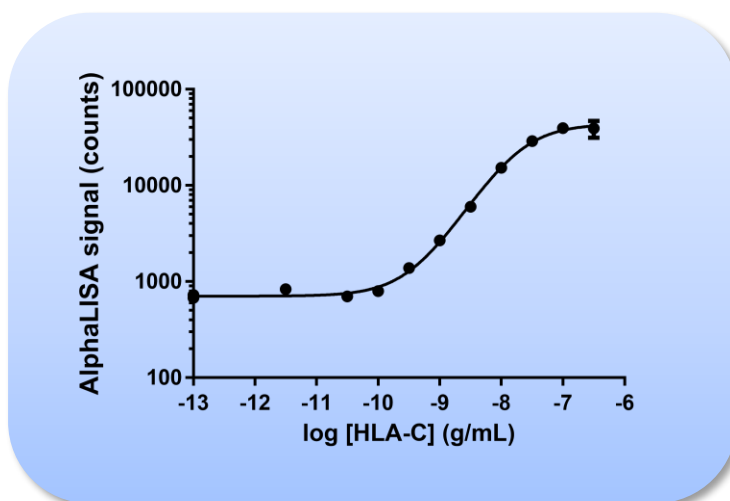


Figure 1. Typical sensitivity curve in AlphaLISA Immunoassay Buffer. The data was generated using a white Optiplate[™]-384 microplate and the EnVision[®] Multilabel Plate Reader 2103 with Alpha option.

- Storage:** Store kit in the dark at +4 °C. For reconstituted analyte aliquot and store at -20 °C. Avoid freeze-thaw cycles.
- Stability:** This kit is stable for at least 12 months from the manufacturing date when stored in its original packaging and the recommended storage conditions.

Analyte of Interest

HLA-C, also known as MHC class I antigen C, official full name as major histocompatibility complex, class I, C, is a protein that in humans is encoded by the HLA-C gene. HLA-C is a heterodimer consisting of a heavy chain and a light chain (β -2 microglobulin). The heavy chain is approximately 45 kDa and anchored in the membrane. HLA-C has a very specialized role in cell recognition by natural killer cells (NK cells) and cytotoxic T-cell. HLA-C binds to killer cell immunoglobulin like receptors to regulate NK cell cytotoxicity activities. Recently, HLA-C has been involved in immune response to HIV-1. This kit has been designed for the detection of Human HLA-C in cell lysate and cell culture medias.

Description of the AlphaLISA Assay

AlphaLISA technology allows the detection of molecules of interest in buffer, cell culture media, serum and plasma in a highly sensitive, quantitative, reproducible and user-friendly mode. In an AlphaLISA assay, a Biotinylated Anti-Analyte Antibody binds to the Streptavidin-coated Alpha Donor beads, while another Anti-Analyte Antibody is conjugated to AlphaLISA Acceptor beads. In the presence of the analyte, the beads come into close proximity. The excitation of the Donor beads provokes the release of singlet oxygen molecules that triggers a cascade of energy transfer in the Acceptor beads, resulting in a sharp peak of light emission at 615 nm (Figure 2).

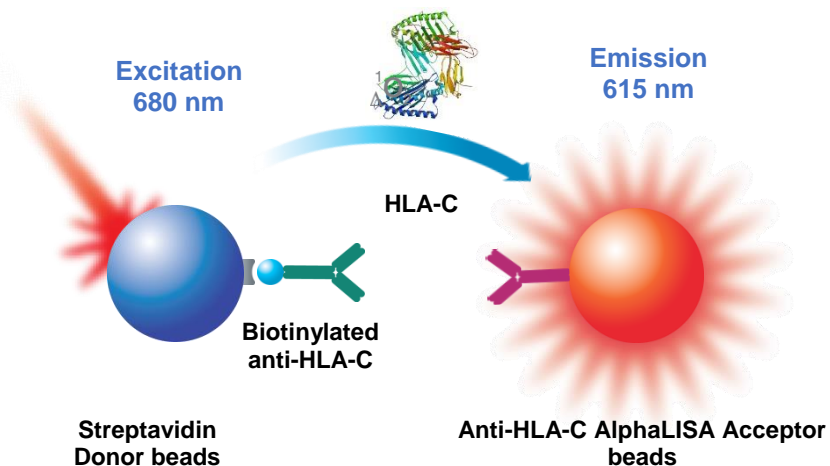


Figure 2. AlphaLISA Assay Principle.

Precautions

- The Alpha Donor beads are light-sensitive. All the other assay reagents can be used under normal light conditions. All Alpha assays using the Donor beads should be performed under subdued laboratory lighting (< 100 lux). Green filters (LEE 090 filters (preferred) or Roscolux filters #389 from Rosco) can be applied to light fixtures.
- Take precautionary measures to avoid contamination of the reagent solutions.
- The Biotinylated Anti-Analyte Antibody contains sodium azide. Contact with skin or inhalation should be avoided.

Kit Content: Reagents and Materials

Kit components	AL3061HV (100 assay points ^{***})	AL3061C (500 assay points ^{***})	AL3061F (5000 assay points ^{***})
AlphaLISA Anti-hHLA-C Acceptor beads stored in PBS, 0.05% Kathon, pH 7.2	20 µL @ 5 mg/mL (1 brown tube, <u>white</u> cap)	50 µL @ 5 mg/mL (1 brown tube, <u>white</u> cap)	500 µL @ 5 mg/mL (1 brown tube, <u>white</u> cap)
Streptavidin (SA)-coated Donor beads stored in 25 mM HEPES, 100 mM NaCl, 0.05% Kathon, pH 7.4	40 µL @ 5 mg/mL (1 brown tube, <u>black</u> cap)	200 µL @ 5 mg/mL (1 brown tube, <u>black</u> cap)	2 x 1 mL @ 5 mg/mL (1 brown tube, <u>black</u> cap)
Biotinylated Anti-hHLA-C Antibody stored in PBS, 0.1% Tween-20, 0.05% NaN ₃ , pH 7.4	20 µL @ 500 nM (1 tube, <u>black</u> cap)	50 µL @ 500 nM (1 tube, <u>black</u> cap)	500 µL @ 500 nM (1 tube, <u>black</u> cap)
hHLA-C Analyte*	100 µL @ 10 µg/mL (1 tube, <u>clear</u> cap)	100 µL @ 10 µg/mL (1 tube, <u>clear</u> cap)	100 µL @ 10 µg/mL (1 tube, <u>clear</u> cap)
AlphaLISA Immunoassay Buffer (10X)**	2 mL, 1 small bottle	10 mL, 1 medium bottle	100 mL, 1 large bottle

* Thaw analyte to room temperature. The analyte should be used within 60 minutes or aliquoted into screw-capped polypropylene vials and stored at -20°C for future experiments. Avoid freeze-thaw cycles. One vial contains an amount of analyte sufficient for performing 10 standard curves. Additional vials can be ordered separately (cat # AL3061S).

** Extra buffer can be ordered separately (cat # AL000C: 10 mL, cat # AL000F: 100 mL).

*** The number of assay points is based on an assay volume of 100 µL in 96-well plates or 50 µL in 96- or 384-well assay plates using the kit components at the recommended concentrations.

Sodium azide should **not** be added to the stock reagents. High concentrations of sodium azide (> 0.001 % final in the assay) might decrease the AlphaLISA signal. Note that sodium azide from the Biotinylated Antibody stock solution will not interfere with the AlphaLISA signal (0.0001% final in the assay).

Specific additional required reagents and materials:

The following materials are recommended:

Item	Suggested source	Catalog #
TopSeal™-A Plus Adhesive Sealing Film	Revvity Inc.	6050185
EnVision®-Alpha Reader	Revvity Inc.	-

Recommendations

- The volume indicated on each tube is guaranteed for single pipetting. Multiple pipetting of the reagents may reduce the theoretical amount left in the tube. To minimize loss when pipetting beads, it is preferable not to pre-wet the tip.
- Centrifuge all tubes (including lyophilized analyte) before use to improve recovery of content (2000g, 10-15 sec). Re-suspend all reagents by vortexing before use.
- Use Milli-Q® grade H₂O (18 MΩ•cm) to dilute 10X AlphaLISA Immunoassay Buffer and to reconstitute the lyophilized analyte.
- When diluting the standard or samples, change tips between each standard or sample dilution. When loading reagents in the assay microplate, change tips between each standard or sample addition and after each set of reagents.
- When reagents are added to the microplate, make sure the liquids are at the bottom of the well.
- Small volumes may be prone to evaporation. It is recommended to cover microplates with TopSeal-A Adhesive Sealing Films to reduce evaporation during incubation. Microplates can be read with the TopSeal-A Film.
- The AlphaLISA signal is detected with an EnVision Multilabel Reader equipped with the Alpha option using the AlphaScreen standard settings (e.g. Total Measurement Time: 550 ms, Laser 680 nm Excitation Time: 180 ms, Mirror: D640as, Emission Filter: M570w, Center Wavelength 570 nm, Bandwidth 100 nm, Transmittance 75%).
- AlphaLISA signal will vary with temperature and incubation time. For consistent results, identical incubation times and temperature should be used for each plate.
- The standard curves shown in this technical data sheet are provided for information only. A standard curve must be generated for each experiment.

Assay Procedure

IMPORTANT: PLEASE READ THE RECOMMENDATIONS BELOW BEFORE USE

- The manual described below is an example for generating one standard curve in a 50 µL final assay volume (48 wells, triplicate determinations). The manuals also include testing samples in 452 wells. If a different amount of samples are tested, the volumes of all reagents have to be adjusted accordingly, as shown in the table below. These calculations do not include excess reagent to account for losses during transfer of solutions or dead volumes.
- The standard dilution manual is provided for information only. As needed, the number of replicates or the range of concentrations covered can be modified.
- Use of four background points in triplicate (12 wells) is recommended when LDL/LLOQ is calculated. One background point in triplicate (3 wells) can be used when LDL/LLOQ is not calculated.

Format	# of data points	Final	Volume			Plate recommendation
			Sample	AlphaLISA Acceptor beads + Biotinylated Antibody	SA-Donor beads	
AL3061HV	100	100 µL	10 µL	10 µL	80 µL	White OptiPlate-96 (cat # 6005290) White ½ AreaPlate-96 (cat # 6005560)
AL3061 C	250	100 µL	10 µL	10 µL	80 µL	White OptiPlate-96 (cat # 6005290) White ½ AreaPlate-96 (cat # 6005560)
	500	50 µL	5 µL	5 µL	40 µL	White ½ AreaPlate-96 (cat # 6005560) White OptiPlate-384 (cat # 6007290) Light gray AlphaPlate™-384 (cat # 6005350)
	1 250	20 µL	2 µL	2 µL	16 µL	Light gray AlphaPlate-384 (cat # 6005350) ProxiPlate™-384 Plus (cat # 6008280) White OptiPlate-384 (cat # 6007290)
	2 500	10 µL	1 µL	1 µL	8 µL	Light gray AlphaPlate-1536 (cat # 6004350)
AL3061 F	5 000	50 µL	5 µL	5 µL	40 µL	White ½ AreaPlate-96 (cat # 6005560) White OptiPlate-384 (cat # 6007290) Light gray AlphaPlate-384 (cat # 6005350)
	12 500	20 µL	2 µL	2 µL	16 µL	Light gray AlphaPlate-384 (cat # 6005350) ProxiPlate-384 Plus (cat # 6008280) White OptiPlate-384 (cat # 6007290)
	25 000	10 µL	1 µL	1 µL	8 µL	Light gray AlphaPlate-1536 (cat # 6004350)

2 Step Manual described below is for 500 assay points including one standard curve (48 wells) and samples (452 wells). If a different amount of samples are tested, the volumes of all reagents have to be adjusted accordingly.

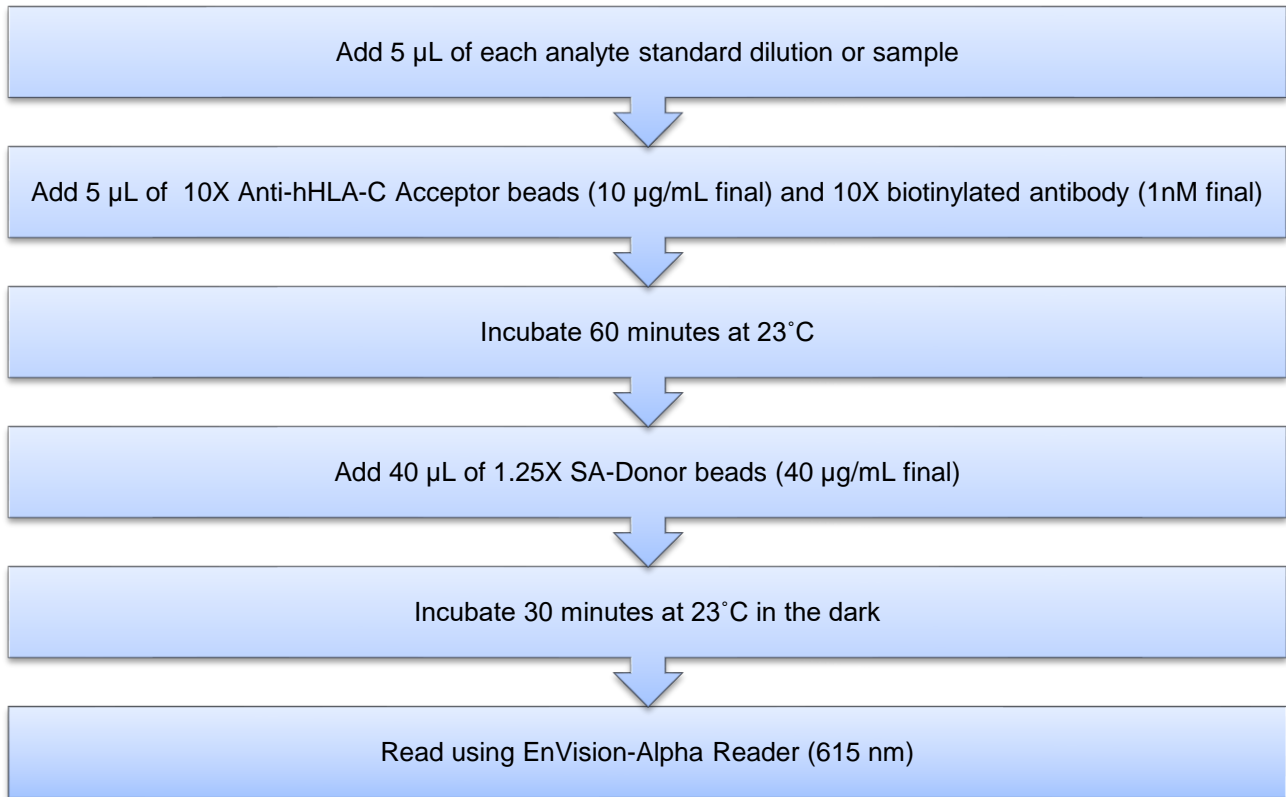
- 1) Preparation of 1X AlphaLISA Immunoassay Buffer:
Add 5 mL of 10X AlphaLISA Immunoassay Buffer to 45 mL Milli-Q® grade H₂O.
- 2) Preparation of hHLA-C analyte standard dilutions:
 - a. Thaw analyte to room temperature.
 - b. Prepare standard dilutions as follows in 1X AlphaLISA Immunoassay Buffer (change tip between each standard dilution):

Tube	Vol. of HLA-C (µL)	Vol. of diluent (µL) *	[HLA-C] in standard curve	
			(g/mL in 5 µL)	(pg/mL in 5 µL)
A	10 µL of reconstituted HLA-C	90	1.00E-06	1,000,000
B	60 µL of tube A	120	3.00E-07	300,000
C	60 µL of tube B	140	1.00E-07	100,000
D	60 µL of tube C	120	3.00E-08	30,000
E	60 µL of tube D	140	1.00E-08	10,000
F	60 µL of tube E	120	3.00E-09	3,000
G	60 µL of tube F	140	1.00E-09	1,000
H	60 µL of tube G	120	3.00E-10	300
I	60 µL of tube H	140	1.00E-10	100
J	60 µL of tube I	120	3.00E-11	30
K	60 µL of tube J	140	1.00E-11	10
L	60 µL of tube K	120	3.00E-12	3
M ** (background)	0	100	0	0
N ** (background)	0	100	0	0
O ** (background)	0	100	0	0
P ** (background)	0	100	0	0

- * Dilute standards in diluent (e.g. 1X AlphaLISA Immunoassay Buffer).
At low concentrations of analyte, a significant amount of analyte can bind to the vial. Therefore, load the analyte standard dilutions in the assay microplate within 60 minutes of preparation.
- ** Four background points in triplicate (12 wells) are used when LDL is calculated. If LDL does not need to be calculated, one background point in triplicate can be used (3 wells).

- 3) Preparation of 10X AlphaLISA Anti-HLA-C Antibody Acceptor beads (100 µg/mL) and biotinylated antibody (10 nM):
 - a. Prepare just before use.
 - b. Add 50 µL of 5 mg/mL AlphaLISA Anti-HLA-C Antibody Acceptor beads and 50 µL of 500 nM biotinylated antibody to 2400 µL of 1X AlphaLISA Immunoassay Buffer.
- 4) Preparation of 1.2X Streptavidin (SA) Donor beads (50 µg/mL):
 - a. Prepare just before use.
 - b. Keep the beads under subdued laboratory lighting.
 - c. Add 200 µL of 5 mg/mL SA-Donor beads to 19800 µL of 1X AlphaLISA Immunoassay Buffer.

5) In a white Optiplate (384 wells):



Data Analysis

- Calculate the average count value for the background wells.
- Generate a standard curve by plotting the AlphaLISA counts versus the concentration of analyte. A log scale can be used for either or both axes. No additional data transformation is required.
- Analyze data according to a nonlinear regression using the 4-parameter logistic equation (sigmoidal dose-response curve with variable slope) and a $1/Y^2$ data weighting (the values at maximal concentrations of analyte after the hook point should be removed for correct analysis).
- The LDL is calculated by interpolating the average background counts (12 wells without analyte) + 3 x standard deviation value (average background counts + (3xSD)) on the standard curve.
- The LLOQ as measured here is calculated by interpolating the average background counts (12 wells without analyte) + 10 x standard deviation value (average background counts + (10xSD)) on the standard curve. Alternatively, the true LLOQ can be determined by spiking known concentrations of analyte in the matrix and measuring the percent recovery, and then determining the minimal amount of spiked analyte that can be quantified within a given limit (usually +/- 20% or 30% of the real concentration).
- Read from the standard curve the concentration of analyte contained in the samples.
- If samples have been diluted, the concentration read from the standard curve must be multiplied by the dilution factor.

Assay Performance Characteristics

AlphaLISA assay performance described below was determined using the 3 steps manual using AlphaLISA Immunoassay buffer (IAB) as assay buffer. The analytes (standards) were prepared in IAB, DMEM, RPMI, 10%FBS, 100% FBS or AlphaLISA Lysis Buffer, All other components were prepared in IAB.

- Assay Sensitivity:

The LDL was calculated as described above. The values correspond to the lowest concentration of analyte that can be detected in a volume of 5 μ L sample using the recommended assay conditions.

LDL (pg/mL)	Buffer or Media*	# of experiments
56	IAB	6
522	DMEM	6
931**	RPMI	6
89	10% FBS	6
1442**	100% FBS	6
31	AlphaLISA Lysis Buffer	6

* Note that LDL can be decreased (i.e. sensitivity increased) by increasing the volume of analyte in the assay (e.g. use 10 μ L of analyte in a final assay volume of 50 μ L).

** RPMI and 100% FBS are not recommended for this AlphaLISA Assay.

- Assay Precision:

The following assay precision data were calculated from the three independent assays using two different kit lots. In each lot, the analytes were prepared in IAB, DMEM, IAB + 10% FBS or AlphaLISA Lysis Buffer. All other components were prepared in IAB. Each assay consisted of one standard curve comprising 12 data points (each in triplicate) and 12 background wells (no analytes). The assays were performed in 384-well format.

- Intra-assay precision:

The intra-assay precision was determined using a total of 16 independent determinations in triplicate. Shown as CV%.

hHLA-C	IAB	DMEM	IAB + 10% FBS	AlphaLISA Lysis Buffer
CV (%)	4	3	6	5

- Inter-assay precision:

The inter-assay precision was determined using a total of 3 independent determinations with 9 measurements for 3 ng/mL sample. Shown as CV%.

hHLA-C	IAB	DMEM+ 10% FBS	IAB + 10% FBS	AlphaLISA Lysis Buffer
CV (%)	5	4	9	8

- Spike Recovery:

Known concentrations of analyte were spiked into either IAB, DMEM, IAB + 10%FBS or 100% FBS. The standard curves were prepared either in IAB, DMEM + 10%FBS and AlphaLISA Lysis Buffer. All other components were diluted in IAB. Concentrations of analytes in spiked samples were determined by interpolating the counts from the spiked samples to the standard curves. The percent recoveries (spiked vs. the measured) were calculated and were shown in the table below.

Spiked	% Recovery			
	HLA-C (ng/mL)	IAB	DMEM	IAB + 10% FBS
100	91	123	121	98
10	83	95	127	85
1	108	121	119	88

- Specificity and/or Selectivity:

Assay specificity and selectivity were tested with human HLA-B, HLA-E, HLA-DR A1 and HLA-DR B1 at 100 ng/mL. The percent detected in the assay are shown in the table below.

Tested Proteins	% Detected
hHLA-B	0
hHLA-E	4.1
hHLA-DR A1	0.0
hHLA-DR B1	0.0

Cell Lysate

To validate the assay kit, commercially available cell lysate overexpressing HLA-C were used. The standard was prepared in lysis buffer, and all other components were prepared in IAB. hHLA-C in the overexpressing HLA-C positive cell lysate was detected (615 pg/ml) while hHLA-C was not detected in negative cell lysate.

Dilution	Overexpressed lysate	Control lysate
1:1	615 pg/mL	0
1:2	362 pg/mL	0
1:4	Below LLOQ	0

Troubleshooting Guide

You will find detailed recommendations for common situations you might encounter with your AlphaLISA Assay kit at: www.revvy.com

FOR RESEARCH USE ONLY. NOT FOR USE IN DIAGNOSTIC PROCEDURES.

